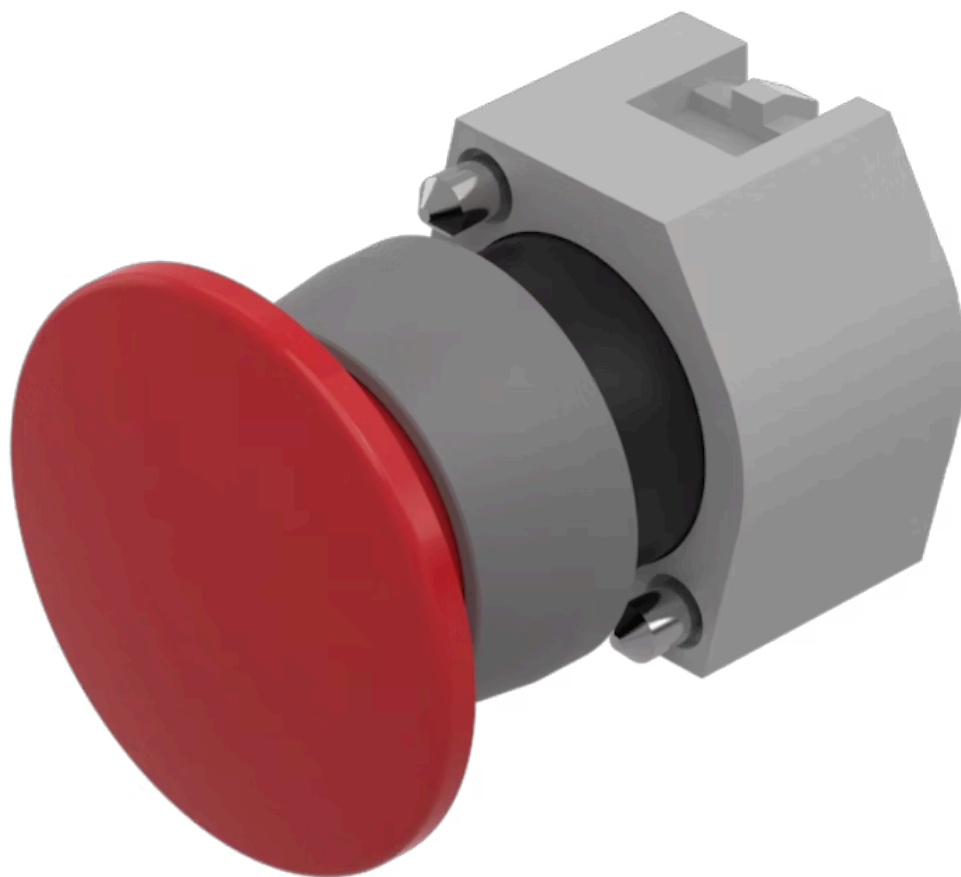


Actuator

704.072.2



<https://eao.com/p/704.072.2>

Your product:



704.072.2 Actuator

FRONT

Front bezel material:	Plastic
Front dimension:	Ø 40 mm
Front bezel colour:	Grey

MOUNTING

Design:	raised
---------	--------

OPERATING-/INDICATION PART

Lens colour:	Red
Lens illumination:	non illuminative
Lens optics:	opaque
Lens material:	Plastic
Lens shape:	mushroom-head

MECHANICAL CHARACTERISTIC

Switching action:	Maintained
Weight:	0.041 kg
Mechanical lifetime:	≤3 Mio. cycles of operation

OTHER

Hints:	Max. 3 switching elements can be clipped on
max. number of switching elements:	3

Housing material:

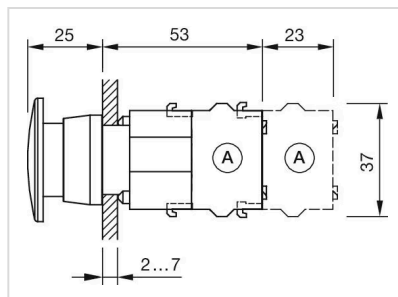
Plastic

Short Description:

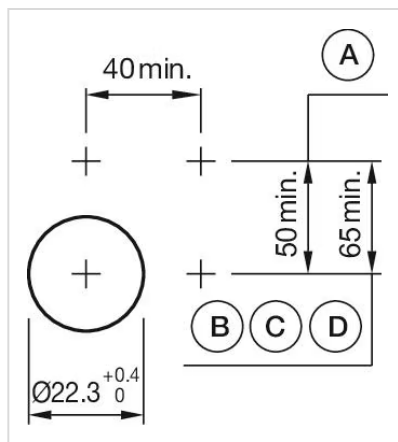
Actuator, Ø 40 mm, mushroom-head, non illuminative, Red, Plastic, opaque, Grey, Plastic, Maintained

Housing colour:

Grey

Dimension drawings:

A = Screw terminal

Mounting cut-outs:

A = Screw terminal
B = Push-in terminal (PIT)
C = Plug-in terminal 6.3 mm x 0.8 mm
D = Double plug-in terminal 6.3 mm x 0.8 mm

Wiring diagrams: