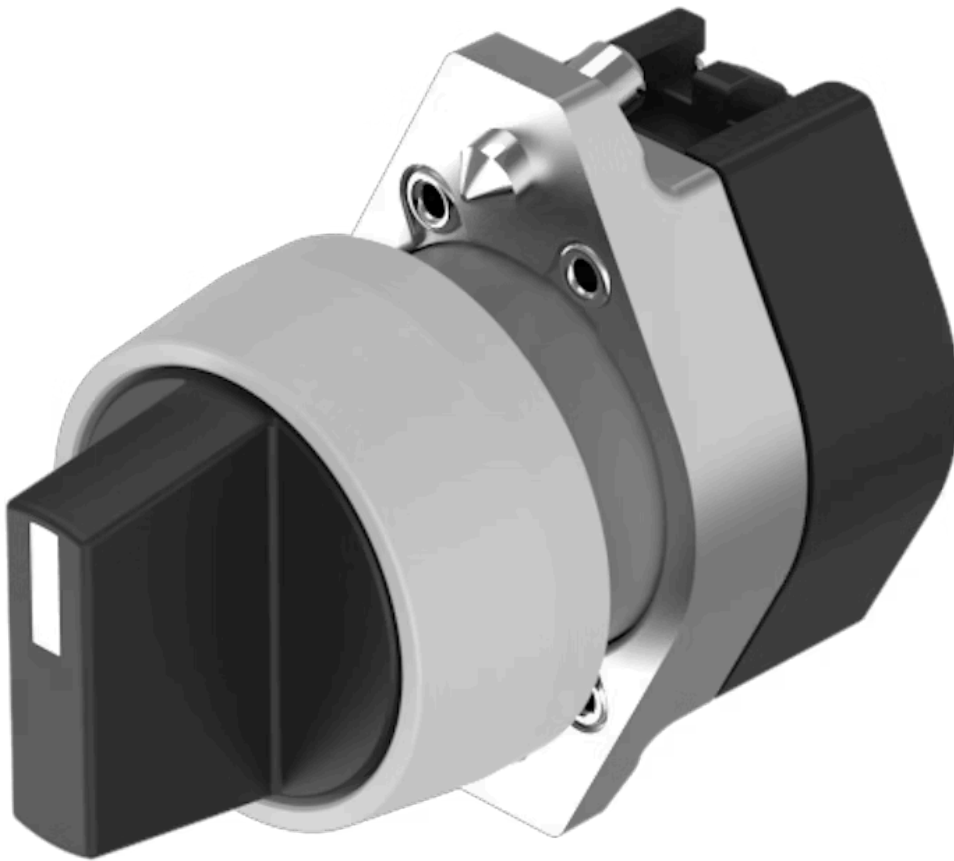


Actuator

704.410.0.12



<https://eao.com/p/704.410.0.12>

Your product:



704.410.0.12 Actuator

FRONT

Front dimension:	Ø 29 mm
Front bezel colour:	Grey
Front bezel material:	Plastic

MOUNTING

Design:	raised
---------	--------

OPERATING-/INDICATION PART

Lever material:	plastic
Lever shape:	short
Lever colour:	Black

ELECTRICAL CHARACTERISTICS

Standards:	The switches comply with the "Standards for low-voltage switching devices" DIN EN 60947-1
------------	---

MECHANICAL CHARACTERISTIC

Weight:	0.034 kg
Switching action:	Rest - Maintained
Mechanical lifetime:	≤2.5 Mio. cycles of operation
Switching positions:	2 positions
Switching angle:	90° right

AMBIENT CONDITION

Operating temperature: – 40 °C ... + 55 °C

Storage temperature: – 40 °C ... + 85 °C

IP Protection: IP65 front side

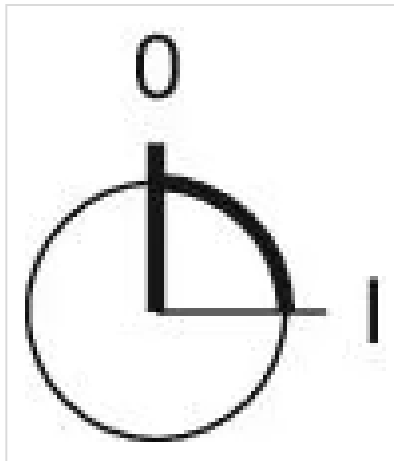
OTHER

Hints: Max. 3 switching elements can be clipped on

max. number of switching elements: 3

Short Description: Actuator, Ø 29 mm, non illuminative, Black, short, Grey, Plastic, Rest - Maintained

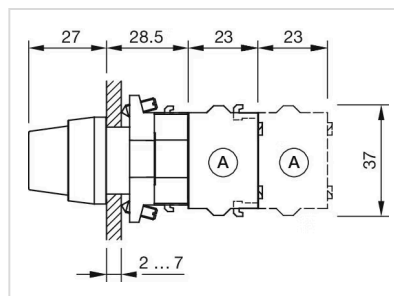
Switching positions:



Wiring diagrams:

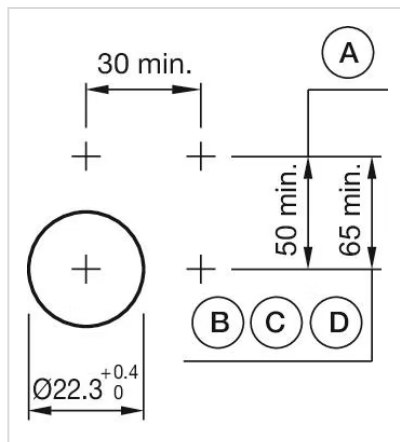


Dimension drawings:



A = Screw terminal

Mounting cut-outs:



- A = Screw terminal
- B = Push-in terminal (PIT)
- C = Plug-in terminal 6.3 mm x 0.8 mm
- D = Double plug-in terminal 6.3 mm x 0.8 mm