

Actuator

61-1320.0



<https://eao.com/p/61-1320.0>

Your product:



61-1320.0 Actuator

FRONT

Front dimension:	18 mm x 18 mm
Front form:	square
Front bezel colour:	Black
Front bezel material:	Plastic

MOUNTING

Mounting cut-out:	Ø 16 mm
-------------------	---------

OPERATING-/INDICATION PART

Lens illumination:	illuminative
--------------------	--------------

MECHANICAL CHARACTERISTIC

Operating Travel:	3 mm
Weight:	0.005 kg
Switching action:	Maintained or momentary
Mechanical lifetime:	According to DIN/IEC 60512-5-6 and EN/IEC 60947-5-1, 1 Mio. cycles of operation (maintain), 2 Mio. cycles of operation (momentary)
Operating force:	3 N ... 5 N snap-action switching element, 3.5 ... 11 N slow-make switching element
Tightening torque:	Max. 0.5 Nm

AMBIENT CONDITION

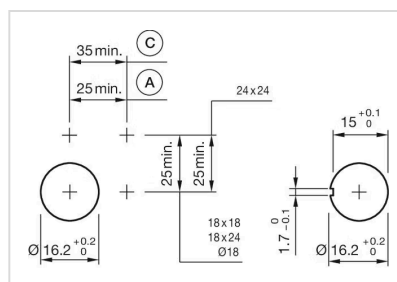
IP Protection:	IP40 rear side, according to EN IEC 60529, IP67 front side, according to EN IEC 60529
----------------	---

OTHER

Housing material: Plastic, according to UL 94 V0, self-extinguishing

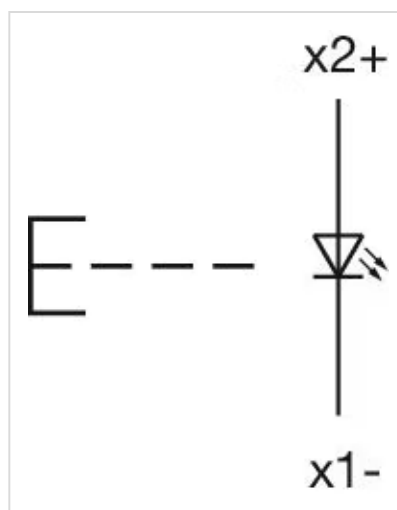
Internal size: 15,3 mm x 15,3 mm

Mounting cut-outs:

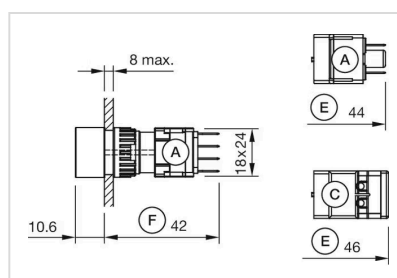


A = Solder/Plug-in terminal 2.8 mm x 0.5 mm
C = Screw terminal

Wiring diagrams:



Dimension drawings:



A = Plug-in terminal 2.8 mm x 0.5 mm
C = Screw terminal
E = Slow-make switching element
F = Snap-action switching element