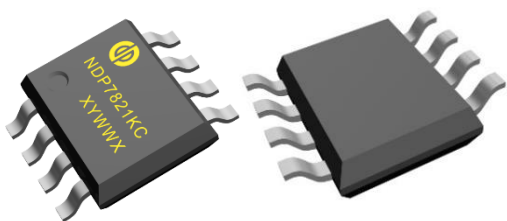


2.1A,40V Synchronous Rectifier

Description

NDP7821KC is a synchronous rectifier for switch mode power supplies, which combines an N-Channel MOSFET and a driver circuit designed for synchronous rectification in DCM and QR operation.

The synchronous rectification can effectively reduce the secondary side rectifier power dissipation and provide high performance solution. By sensing MOSFET SW-to-source voltage, NDP7821KC can output ideal drive signal with less external components. It can provide high performance solution for 5V output voltage application.



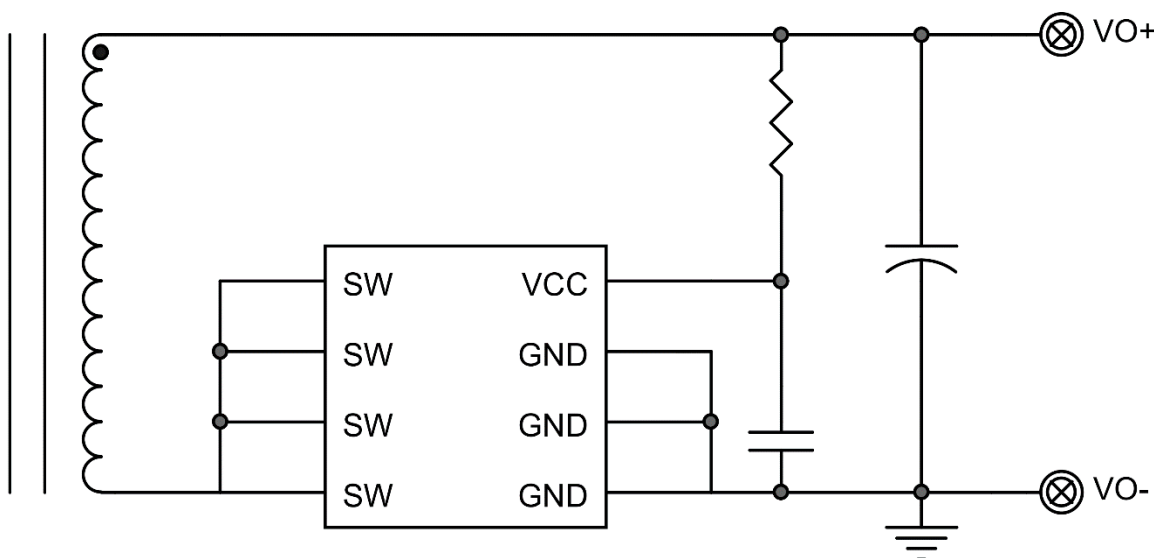
Features

- Supports DCM and Quasi-Resonant Topologies
- Supports Low-Side Rectification
- Max 85kHz Switching Frequency
- Fast Turn-off Total Delay of 30ns
- Compatible with Energy Star
- ~150uA Low Quiescent Current
- Available in SOP8 Package

Applications

- Chargers for Cell Phones
- AC/DC adapter
- Industrial Power Systems
- Flyback Converters

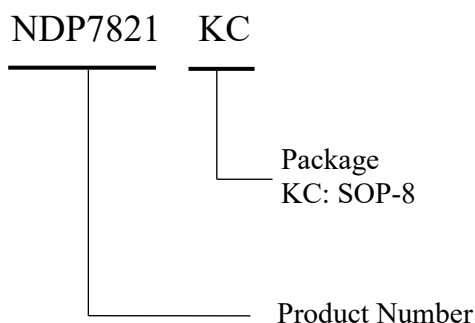
Typical Application



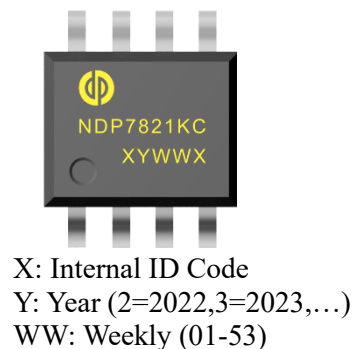
Order Information

Orderable Device	Package Type	Packing Qty/reel	MSL- Peak Temp -Floor Life	Eco Std	Marking Information
NDP7821KC	SOP-8	4000	MSL3-260°C-168hrs	RoHS & Green	Refer to below

Product Naming



Top Side Marking



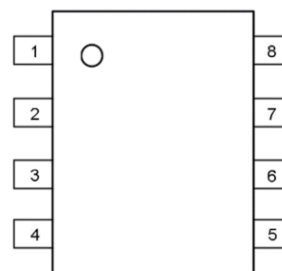
Notes:

- (1) **RoHS:** Quoted from **RoHS Directive (EU) 2015/863**, Deep-Pool defines "RoHS" to mean semiconductor products that are compliant with the current EU RoHS requirements. Where designed to be soldered at high temperatures, "RoHS" products are suitable for use in specified lead-free processes. Deep-Pool may reference these types of products as "**Pb-Free**".
- (2) **RoHS Exempt:** Deep-Pool defines "RoHS Exempt" to mean products that contain lead but are compliant with EU RoHS pursuant to a specific EU RoHS exemption.
- (3) **Green:** Deep-Pool defines "Green" to mean the content of Chlorine (Cl) and Bromine (Br) based flame retardants meet JEDEC (**JS709C**) low halogen requirements of $\leq 1000\text{ppm}$ threshold.
- (4) **MSL, Peak Temp.** - The Moisture Sensitivity Level rating according to the JEDEC (**J-STD-020F**) industry standard classifications, as well as the peak solder temperature of SMT and the floor life after unpacking, which customers should pay attention and strictly comply with the standard to use.
- (5) There may be additional marking, which relates to the logo, the lot trace code information, or the environmental category on the device.

The information provided on this page represents **Deep-Pool's** knowledge and belief as of the date that it is provided. **Deep-Pool** bases its knowledge and belief on information provided by third parties and makes no representation or warranty as to the accuracy of such information. Efforts are underway to better integrate information from third parties. **Deep-Pool** has taken and continues to take reasonable steps to provide representative and accurate information but may not have conducted destructive testing or chemical analysis on incoming materials and chemicals. **Deep-Pool** and **Deep-Pool** suppliers consider certain information to be proprietary, and thus CAS numbers and other limited information may not be available for release.

Pin Function and Definition

PIN	NAME	Description
1,2,3	GND	Ground
4	VCC	Power Supply
5,6,7,8	SW	Drain of Internal N-MOS



Absolute Maximum Ratings (at $T_A = 25^{\circ}\text{C}$)

Characteristics	Symbol	Rating	Unit
VCC to GND		-0.3 to 6.5	V
SW to GND		-0.3 to 45	V
Operating Junction Temperature	T_A	-40 to 150	$^{\circ}\text{C}$
Storage Junction Temperature	T_{stg}	-65 to 150	$^{\circ}\text{C}$
Thermal Resistance from Junction to case	θ_{JC}	80	$^{\circ}\text{C}/\text{W}$
Thermal Resistance from Junction to ambient	θ_{JA}	160	$^{\circ}\text{C}/\text{W}$

Notes:

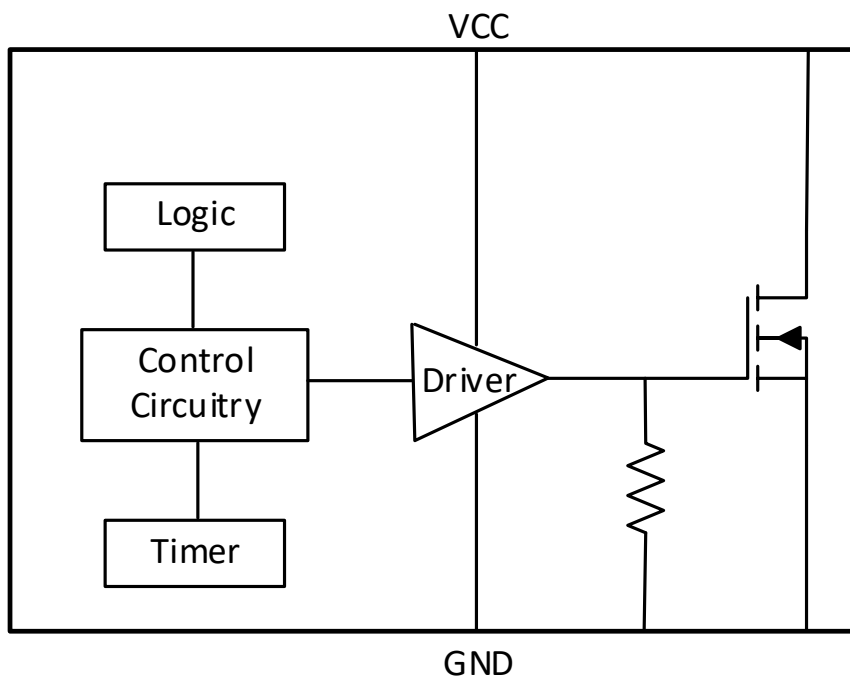
Stresses at or above those listed under Absolute Maximum Ratings may cause permanent damage to the product. This is a stress rating only; functional operation of the product at these or any other conditions above those indicated in the operational section of this specification is not implied. Operation beyond the maximum operating conditions for extended periods may affect product reliability.

Electrical Characteristics

$T_J = 25^{\circ}\text{C}$, $V_{IN} = 12\text{V}$, unless otherwise noted.

Characteristics	Symbol	Conditions	Min	Typ	Max	Units
Input Voltage	V_{CC}		3.6	-	6.0	V
UVLO OFF Voltage	V_{UVLO_OFF}	V_{CC} Rising		2.3		V
UVLO ON Voltage	V_{ON}	V_{CC} Falling		2.1		V
V_{CC} Voltage Clamp	V_{OVP}			6.2		V
Quiescent Current	I_{CCQ}	No Switch	-	150	-	μA
Turn ON Threshold	V_{TH_ON}			-170		mV
Driver Voltage Regulator	V_{REG}			-37		mV
Turn OFF Threshold	V_{TH_OFF}			-20		mV
Turn OFF Total Delay	T_{OFF_DELAY}			30		nS
Minimum on Time	T_{MIN}			1.7		μS
NMOS R_{DS_ON}	R_{DS_ON}			24		$\text{m}\Omega$
Breakdown Voltage	BV_{DSS}		40			V
Thermal Shutdown Temperature	T_{SD}		-	150	-	$^{\circ}\text{C}$
Thermal Shutdown Hysteresis Temperature	T_{SH}		-	30	-	$^{\circ}\text{C}$

Block Diagram



Operational Description

The NDP7821KC supports operation in DCM and Quasi-Resonant topologies. Operating in either a DCM or Quasi-Resonant topology, the control circuitry controls the gate in forward mode and will turn the gate off when the MOSFET current is low.

VCC Under Voltage Lockout (UVLO)

When the V_{CC} is below UVLO threshold, the part is in sleep mode and the internal N-MOS will be turn off.

Turn ON Phase

When the synchronous MOSFET is conducting, current will flow through its body diode which generates a negative V_{DS} across it. Because this body diode voltage drop is much smaller than the turn on threshold of the control circuitry (-170mV), which will then turn on the N-MOS.

Conducting Phase

When the synchronous N-MOS is turned on, V_{DS} becomes to rise according to its on resistance, as the current become smaller V_{DS} rises above the Driver Voltage Regulator (-37mV), the circuitry starts pulling down the gate driver which leads to the V_{DS} be regulated to a fixed voltage (the internal reference).

Turn OFF Phase

When the V_{DS} rises to trigger the turn off threshold (-20mV), the N-MOS gate voltage is pulled to low after about 30nS delay by the control circuitry, a $1.7\mu\text{S}$ blanking time is added after the synchronous N-MOS is turn off to avoid error trigger because of the ringing.

Blanking

The NDP7821KC control circuitry contains a blanking function. When it pulls the MOSFET OFF, it makes sure that the OFF state at least lasts for about $1.7\mu\text{s}$, so it is not recommended to set the synchronous period less than $1.6\mu\text{s}$ in flyback converter, otherwise shoot through may occur During normal operation.

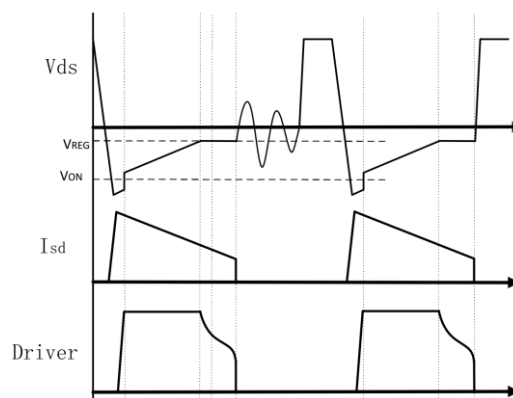
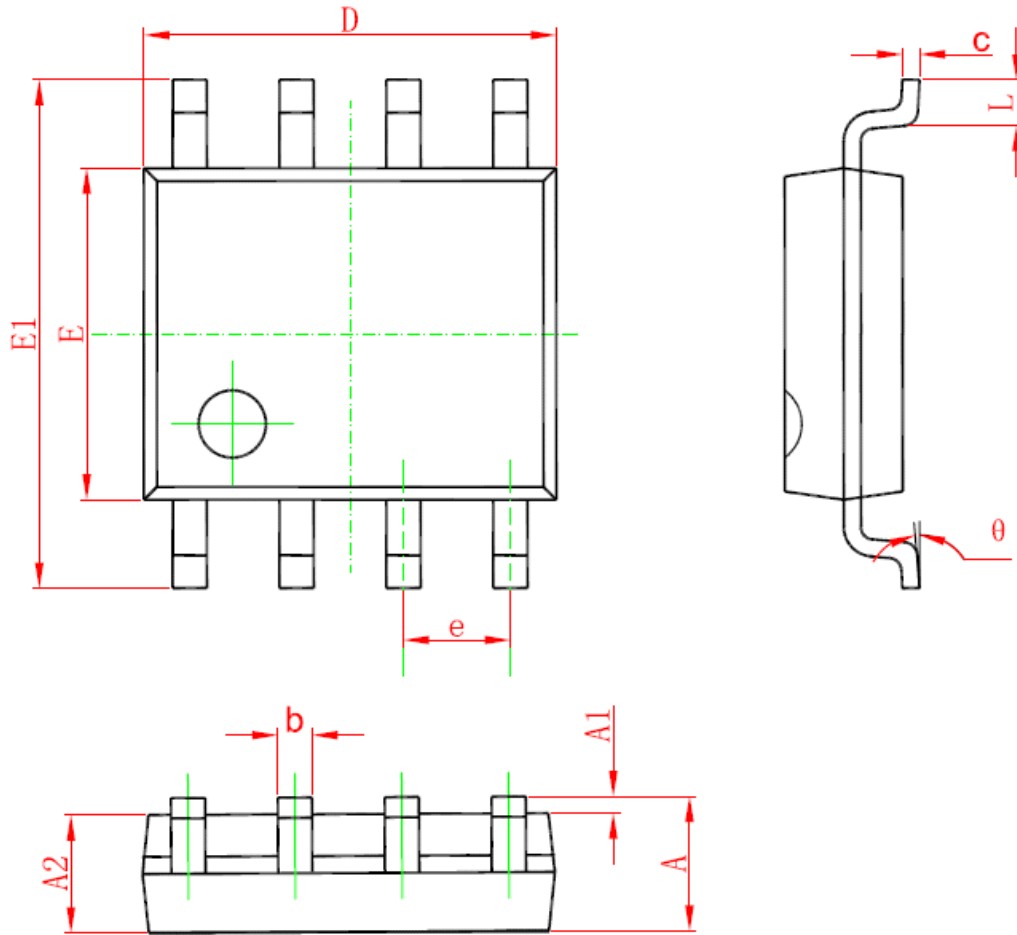


Figure 1 Operation in DCM mode

Package Outline Drawing

8-Lead Standard Small Outline Package [SOP-8]



Symbol	Dimensions In Millimeters		Dimensions In Inches	
	Min	Max	Min	Max
A	1.350	1.750	0.053	0.069
A1	0.050	0.250	0.002	0.010
A2	1.250	1.650	0.049	0.065
b	0.310	0.510	0.012	0.020
c	0.170	0.250	0.006	0.010
D	4.700	5.150	0.185	0.203
E	3.800	4.000	0.15	0.157
E1	5.800	6.200	0.228	0.244
e	1.270 (BSC)		0.05 (BSC)	
L	0.400	1.270	0.016	0.050
θ	0°	8°	0°	8°

Notes

1. Use millimeters as the primary measurement
2. Dimensioning and tolerances conform to ASME Y14.5M. – 1994
3. These dimensions do not include mold flash or protrusions.
4. Mold flash or protrusions shall not exceed 0.15mm

Disclaimer

ALL PRODUCT, PRODUCT SPECIFICATIONS AND DATA ARE SUBJECT TO CHANGE WITHOUT NOTICE TO IMPROVE RELIABILITY, FUNCTION OR DESIGN OR OTHERWISE.

Jiangsu Deep-Pool Microelectronics Co., Ltd, and its affiliates, agents, employees, as well as all persons acting on its or their behalf (collectively, “**Deep-Pool**”), disclaim any and all liability for any errors, inaccuracies or incompleteness contained in any datasheet or in any other disclosure relating to any product.

Deep-Pool makes no warranty, representation or guarantee regarding the suitability of the products for any particular purpose or the continuing production of any product. To the maximum extent permitted by applicable law, Deep-Pool disclaims (a) any and all liability arising out of the application or use of any product, (b) any and all liability, including without limitation special, consequential or incidental damages, and (c) any and all implied warranties, including warranties of fitness for particular purpose, non-infringement and merchantability.

Statements regarding on the suitability of products for certain types of applications are based on Deep-Pool's knowledge of typical requirements that are often placed on Deep-Pool products in generic applications. Such statements are not binding statements about the suitability of products for a particular application. It is the customer's responsibility to validate that a particular product with the properties described in the product specification is suitable for use in a particular application. Parameters provided in datasheets or specifications may vary in different applications and performance may vary over time. All operating parameters, including typical parameters, must be validated for each customer application by the customer's technical experts. Product specifications should not be expanded or otherwise modify Deep-Pool's terms and conditions of purchase, including but not limited to the warranty announced therein.

Unless expressly stated in writing, Deep-Pool products are not designed for use in medical, life-saving, or life-sustaining applications or for any other application in which the failure of product could result in personal injury or death. Customers who use or sell Deep-Pool products not expressly indicated for use in such applications do so at their own risk. Please contact authorized Deep-Pool personnel to obtain written terms and conditions regarding products designed for such applications.