

IO-Link Touch Stainless Steel

84-ADKS-C20-04B8



<https://eao.com/p/84-ADKS-C20-04B8>

Your product:



84-ADKS-C20-04B8

IO-Link Touch Stainless Steel

FRONT

Front dimension:	Ø 30 mm
Front form:	round
Front bezel material:	Plastic

MOUNTING

Design:	flush
---------	-------

OPERATING-/INDICATION PART

Lens illumination:	illuminative
Lens shape:	flush
Lens material:	Plastic
Lens optics:	transparent

ELECTRICAL CHARACTERISTICS

Operating voltage:	8,4 - 32,00 V DC
--------------------	------------------

MECHANICAL CHARACTERISTIC

Terminal:	Connector M12
Weight:	0.015 kg
Switching system:	Capacitive
Operating force:	No actuating force necessary

AMBIENT CONDITION

IK front protection:	IK08
IP front protection:	IP69K
Operating temperature:	– 30 °C ... + 65 °C
Climate resistance:	Relative humidity, max. 95%, non-condensing

CERTIFICATE

Approbations:	CSA, EHEDG
Conformities:	CE, UKCA

OTHER

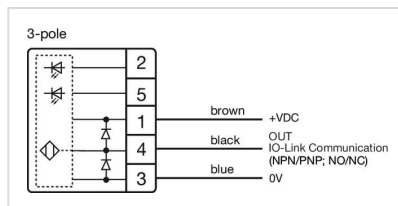
Short Description:	IO-Link Touch Stainless Steel, Ø 30 mm, flush, illuminative, Plastic, transparent, round, Plastic, Connector M12, IP69K, IK08, C20
---------------------------	--

Housing colour:	Black
------------------------	-------

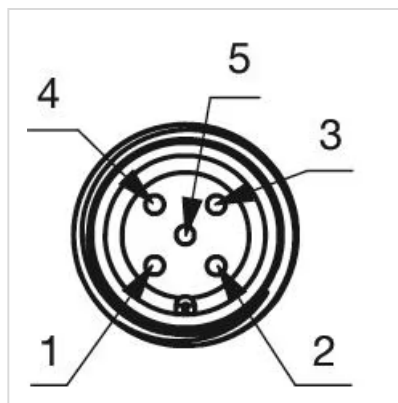
Housing material:	Plastic
--------------------------	---------

Symbol:	C20
----------------	-----

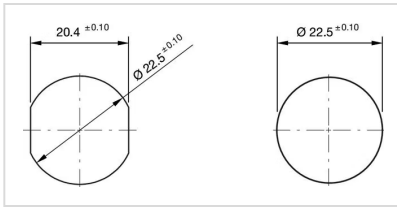
Wiring diagrams:



Component layouts:



Mounting cut-outs:



Dimension drawings:

