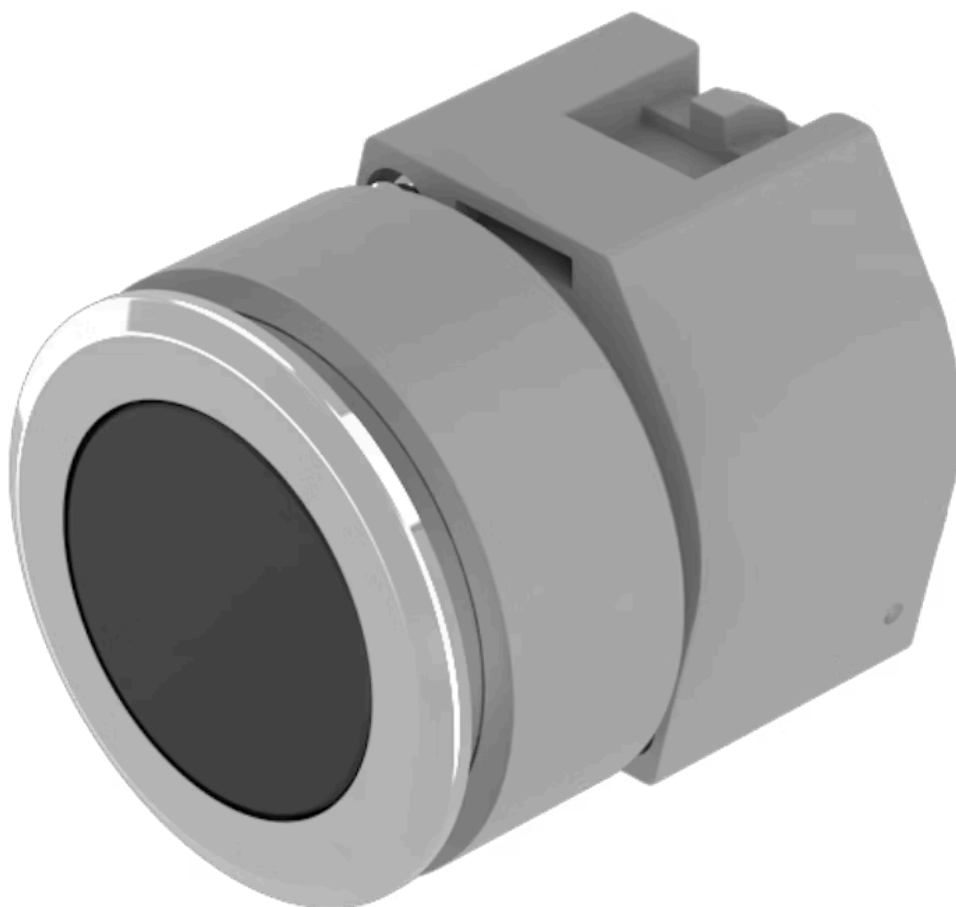


Actuator

704.042.018



<https://eao.com/p/704.042.018>

Your product:



704.042.018 Actuator

FRONT

Front dimension:	Ø 35 mm
Front form:	round
Front bezel material:	Aluminium
Front bezel colour:	Nature

MOUNTING

Mounting cut-out:	Ø 30.5 mm
Design:	flush

OPERATING-/INDICATION PART

Lens illumination:	non illuminative
Lens shape:	flush
Lens optics:	opaque
Lens material:	Plastic
Lens colour:	Black

ELECTRICAL CHARACTERISTICS

Standards:	The switches comply with the "Standards for low-voltage switching devices" DIN EN 60947-1
------------	---

MECHANICAL CHARACTERISTIC

Mechanical lifetime:	≤3 Mio. cycles of operation
Operating force:	8 N

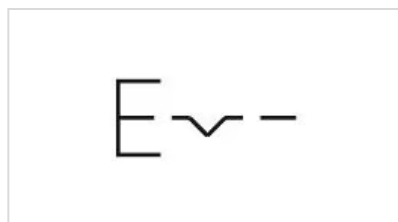
Operating Travel:	ca. 5.8 mm ± 0.2 mm
Switching action:	Maintained
Weight:	0.051 kg

AMBIENT CONDITION

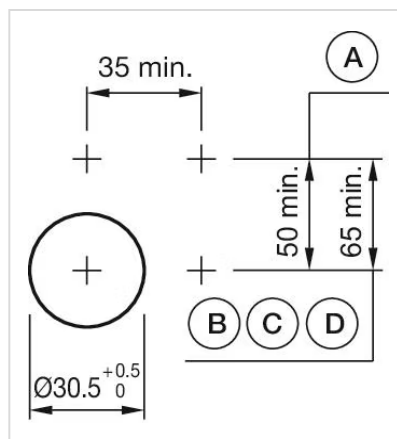
Storage temperature:	– 40 °C ... + 85 °C
Operating temperature:	– 40 °C ... + 55 °C
IP Protection:	IP65 front side

OTHER

Housing colour:	Grey
Hints:	Max. 3 switching elements can be clipped on, The colour of anodised aluminium parts can vary due to technical production reasons
Housing material:	Plastic
Short Description:	Actuator, Ø 30.5 mm, Ø 35 mm, flush, non illuminative, Black, Plastic, opaque, round, Nature, Aluminium, anodised, Maintained
max. number of switching elements:	3
Wiring diagrams:	

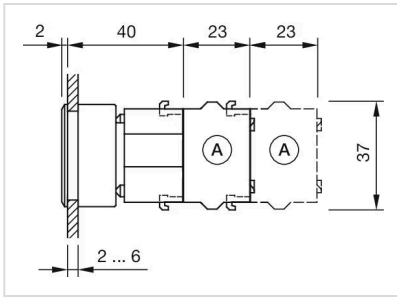


Mounting cut-outs:



A = Screw terminal
 B = Push-in terminal (PIT)
 C = Plug-in terminal 6.3 mm x 0.8 mm
 D = Double plug-in terminal 6.3 mm x 0.8 mm

Dimension drawings:



A = Screw terminal