

# Customer Information Sheet

DRAWING No.: D3082-XX

SHEET 2 OF 2

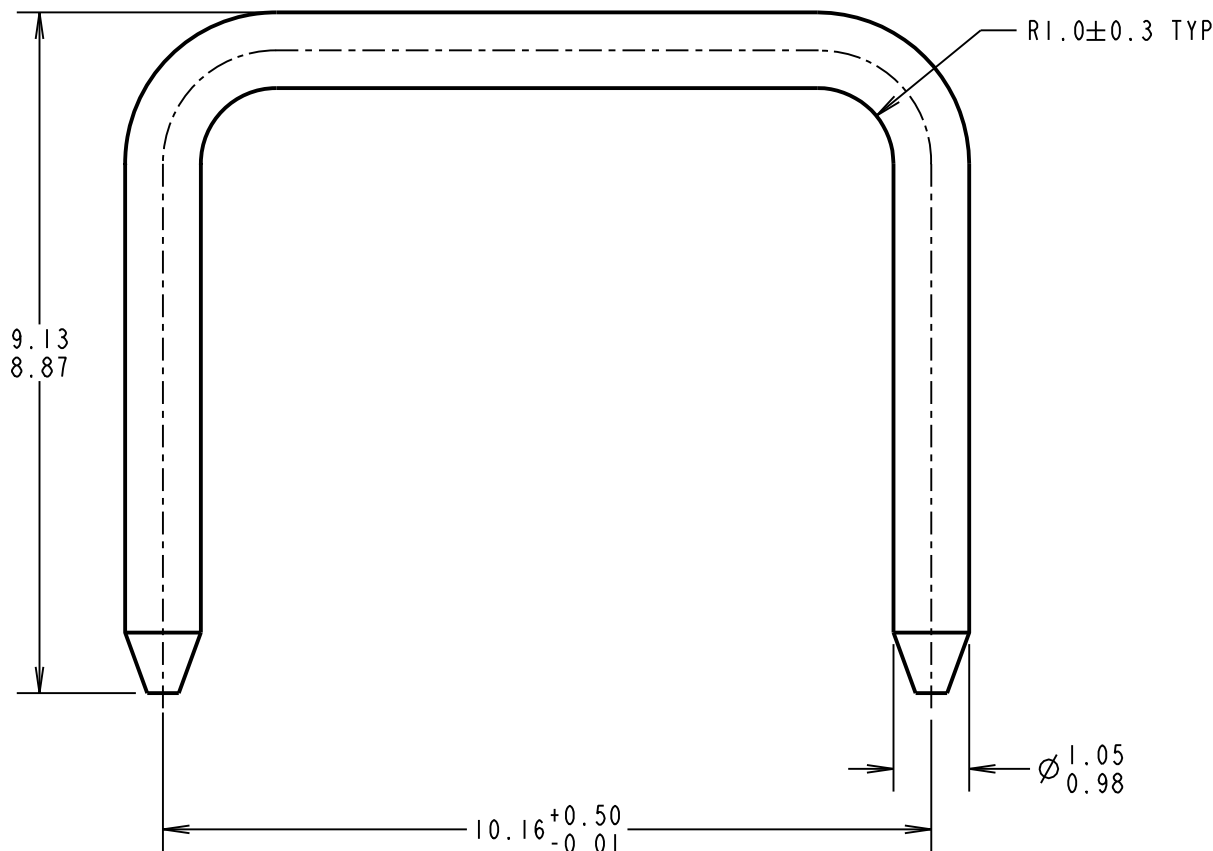
IF IN DOUBT - ASK

©

NOT TO SCALE

THIRD ANGLE PROJECTION

ALL DIMENSIONS IN mm



**OBSOLETE**

ORDER CODE:

**D3082-XX**

FINISH:

~~01 = 100% MATTE TIN~~  
05 = GOLD FLASH  
46 = 100% BRIGHT TIN

PART No.	FINISH
<del>D3082-01</del>	<del>2.54<math>\mu</math> 100% MATTE TIN OVER 0.76<math>\mu</math> NICKEL UNDERCOAT</del>
D3082-05	GOLD FLASH OVER 0.76 $\mu$ NICKEL UNDERCOAT
D3082-46	2.54 $\mu$ 100% BRIGHT TIN OVER 0.76 $\mu$ NICKEL UNDERCOAT

SB	11	18.12.12	11891
NAME	ISS.	DATE	C/NOTE
APPROVED:		S.BENNETT	
CHECKED:		S.FLOWER	
DRAWN:		C. HANSEN	
CUSTOMER REF.:			
ASSEMBLY DRG:			
		D3088-XX	

**HARWIN**

www.harwin.com  
technical@harwin.com

THIS DRAWING AND ANY  
INFORMATION OR DESCRIPTIVE  
MATTER SET OUT HEREON ARE  
CONFIDENTIAL AND COPYRIGHT  
PROPERTY OF THE HARWIN  
GROUP AND MUST NOT BE  
DISCLOSED, LOANED, COPIED  
OR USED FOR MANUFACTURING,  
TENDERING OR FOR ANY  
OTHER PURPOSE WITHOUT  
THEIR WRITTEN PERMISSION.

TOLERANCES  
X. = ±1mm  
X.X = ±0.25mm  
X.XX = ±0.10mm  
X.XXX = ±0.01mm  
ANGLES = ±5°  
UNLESS STATED

MATERIAL:

BRASS C2600

FINISH: SEE ABOVE

S/AREA:

mm<sup>2</sup>

TITLE:

1mm SHORTING LINK

DRAWING NUMBER:

**D3082-XX**

SHT  
2  
OF  
2