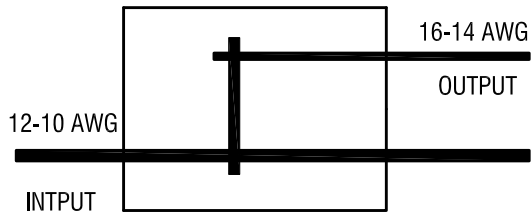
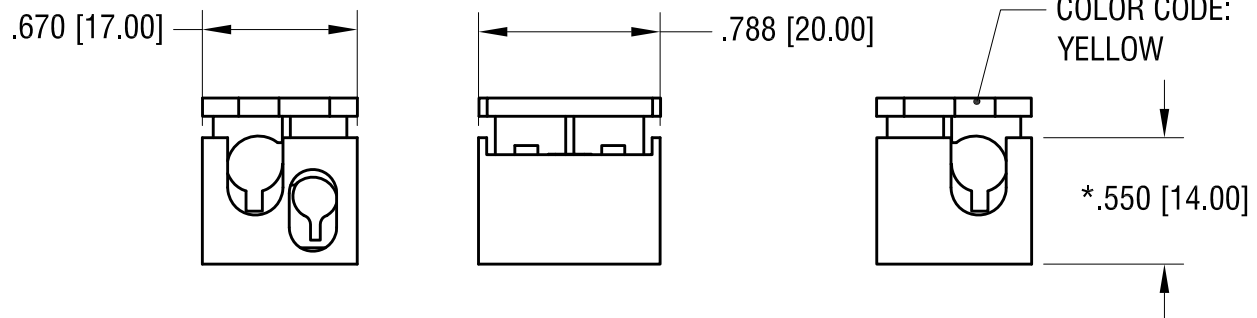
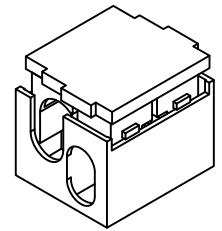


# SCHEMATIC



THIS DOCUMENT IS THE PROPERTY OF  
KEYSTONE ELECTRONICS CORP. AND  
SHALL NOT BE REPRODUCED, DISTRIBUTED  
OR USED AS A BASIS FOR MANUFACTURE  
WITHOUT PRIOR WRITTEN PERMISSION  
FROM KEYSTONE ELECTRONICS CORP.

# ACTUAL SIZE:



## NOTE:

1. INSULATION: MAT'L- POLYCARBONATE, LEXAN UL 94V-0
2. CONTACT: MAT'L- COPPER ALLOY  
FINISH- TIN PLATE, OVER NICKEL PLATE
3. FOR WIRE: SOLID WIRE  
WIRE SIZE: 12 AWG MIN. - 10 AWG MAX., INPUT  
16 AWG MIN. - 14 AWG MAX., OUTPUT
4. RATED VOLTAGE 300V  
RATED CURRENT: 20A

\* HEIGHT OF CLOSED CONNECTOR

10.13.22 PARTS ARE NO LONGER UL LISTED  
CHANGE AS PER ECN 22-160

A

KEYSTONE ELECTRONICS CORP.					
www.keyelco.com ● NEW HYDE PARK, NY 11040● Tel (516) 328-7500					
PART NAME					
T - SERIES WIRE CONNECTOR					
MATERIAL					
AS NOTED					
FINISH			DRN BY		DATE
			NT		1.06.17
AS NOTED			APP'D		SCALE
			RH		1.2X
TOLERANCES		INCH	[MM]	CODE	DWG NO.
DECIMAL		± .010	[± 0.25 ]	C	8381
ANGULAR		± 1°			
UNLESS OTHERWISE SPECIFIED					

DATE

DESCRIPTION

REV.