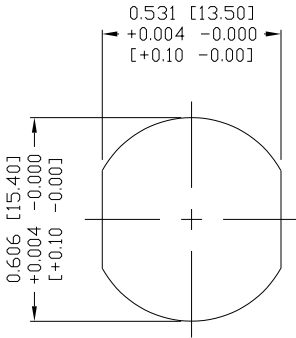


SPECIFICATIONS:

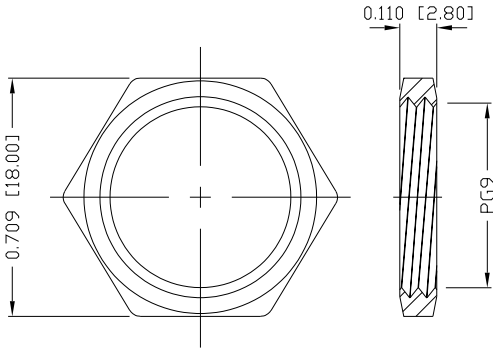
<b>MATERIALS:</b>	
HOUSING:	PBT, UL94 V-0, BLACK
CONTACTS:	GOLD PLATED BRASS (SEE P/N KEY BELOW)
NUT:	NICKEL PLATED BRASS
SHELL:	NICKEL PLATED BRASS
ORING:	EPDM, BLACK

<b>ELECTRICAL:</b>	
RATED CURRENT:	4A
RATED VOLTAGE:	250V
INSULATION RESISTANCE:	100 MOhms MIN.
CONTACT RESISTANCE:	10 mOhms MAX.

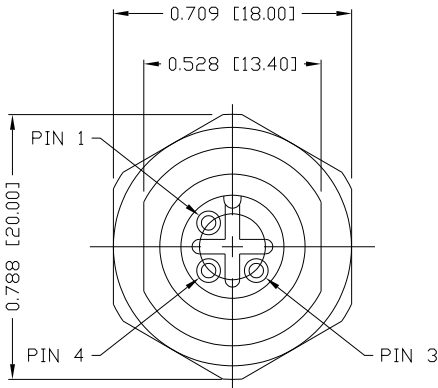
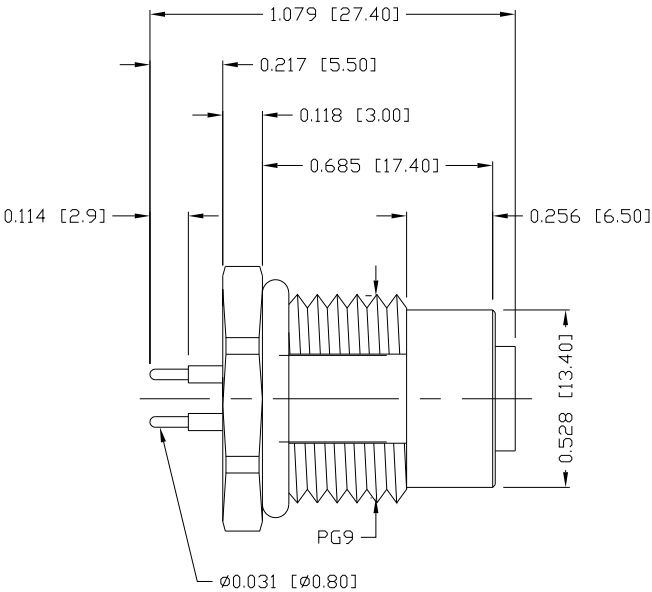
<b>ENVIRONMENT:</b>	
OPERATING TEMPERATURE:	-40°C TO +85°C
WATER PROOF:	IP67



PANEL CUTOUT



NUT

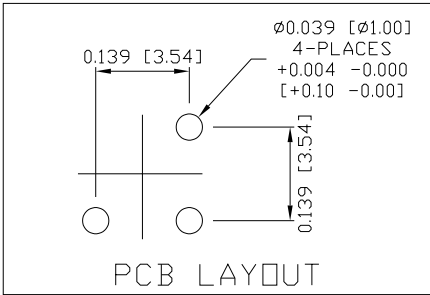


NORCOMP MATING PART NUMBERS:

858-003-103RKT4\*  
858-R03-103RLU4\*  
858-R03-103RSS4\*  
\*Also all material and contact plating variants

860-003-213R00Y

3 = BRASS/NICKEL SHELL & NUT  
S = STAINLESS STEEL SHELL & NUT  
1 = GOLD FLASH  
4 = 10µ" GOLD



RoHS COMPLIANT



THESE DRAWINGS AND SPECIFICATIONS ARE THE PROPERTY OF NorComp AND SHALL NOT BE REPRODUCED, COPIED OR USED AS THE BASIS FOR THE MANUFACTURE OR SALE OF APPARATUS WITHOUT WRITTEN PERMISSION.

DRAWN:  
M. SIGMON  
DATE:  
03/07/2016

UNITS = inch [mm]

DO NOT SCALE FROM DRAWING

NorComp

SCALE: NTS	SHEET 1 OF 1	REV 6
DWG NO. 860-003-213R00Y		