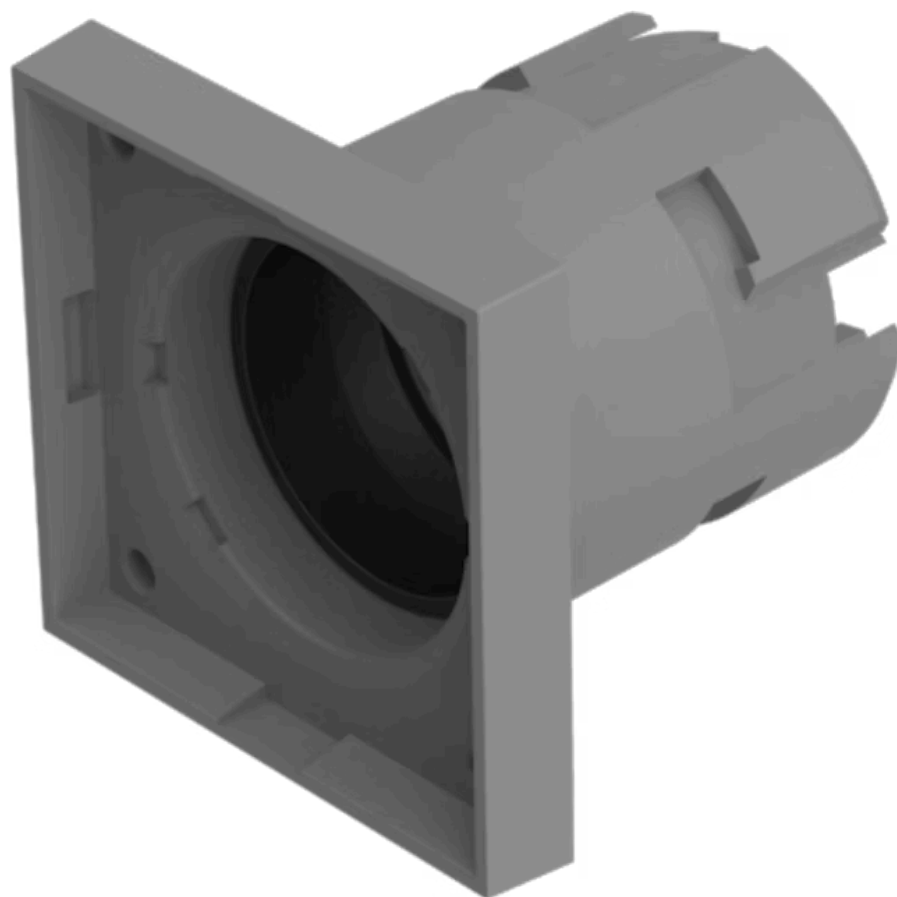


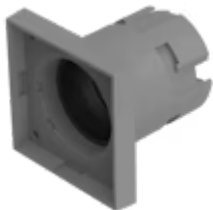
Actuator

704.730.1



<https://eao.com/p/704.730.1>

Your product:



704.730.1 Actuator

FRONT

Front dimension: 30 mm x 30 mm

MOUNTING

Design: raised

ELECTRICAL CHARACTERISTICS

Standards: The switches comply with the “Standards for low-voltage switching devices” DIN EN 60947-1

MECHANICAL CHARACTERISTIC

Weight: 0.009 kg

AMBIENT CONDITION

Operating temperature: – 40 °C ... + 55 °C

Storage temperature: – 40 °C ... + 85 °C

IP Protection: IP65 front side

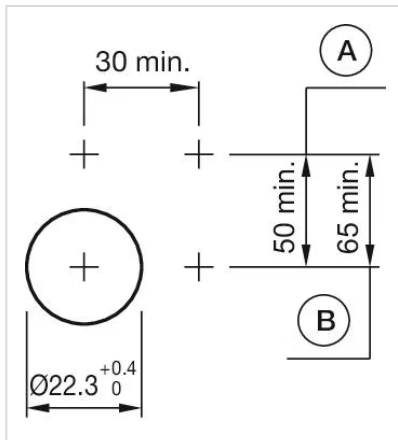
OTHER

Housing material: Plastic

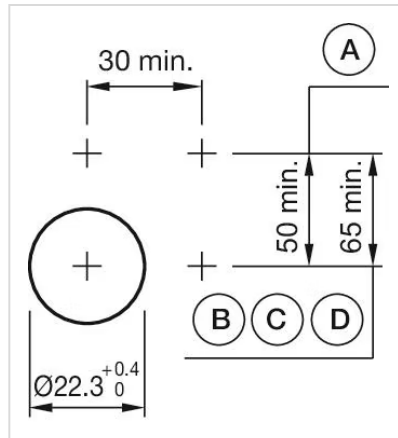
Housing colour: Grey

Short Description: Actuator, 30 mm x 30 mm

Mounting cut-outs:

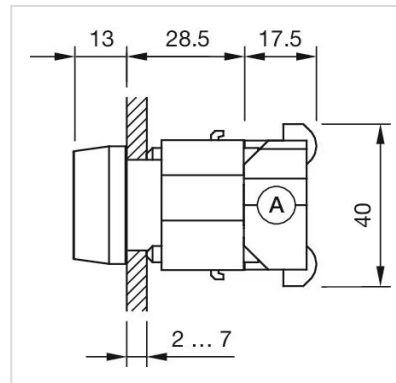


A = Screw terminal
B = Push-in terminal (PIT)

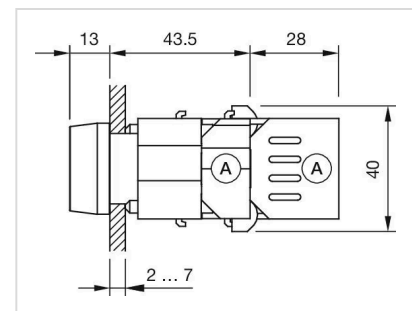


A = Screw terminal
B = Push-in terminal (PIT)
C = Plug-in terminal 6.3 mm x 0.8 mm
D = Double plug-in terminal 6.3 mm x 0.8 mm

Dimension drawings:



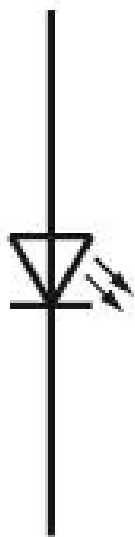
A = Screw terminal



X = Screw terminal

Wiring diagrams:

$x_2 +$



$x_1 -$