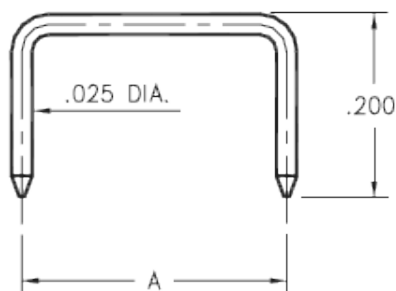


**Product Number: 3360-4-14-15-00-00-08-0**


Basic Part Number	Pin Centers A
3360-1	.200
3360-2	.250
3360-3	.300
3360-4	.400
3360-5	.500

**Description:****3360** - Jumper Pin**Packaging:**

Packaged in Bulk

**3360-X-14-XX-00-00-08-0**

Shorting Jumper

Mill-Max Part Number	Shell Plating	Contact Plating	RoHS Compliant
3360-4-14-15-00-00-08-0	10 µ" Gold over Nickel	00	

**SHELL MATERIAL:****BRASS ALLOY** (UNS C36000) per ASTM B 16**Properties of BRASS ALLOY:**

- Chemical composition: Cu 61.5%, Zn 35.4%, Pb 3.1%†
- Hardness as machined: 80-90 Rockwell B
- Density: .307 lbs/in<sup>3</sup>
- Electrical conductivity: 26% IACS\*
- Melting point: 900°C/885°C (liquidus/solidus)

†(3 to 4% lead is used to permit "free machining" and is permitted by EC Directive 2002/95Annex 6; so all pin materials are RoHS compliant)

\*International Annealed Copper Standard, i.e. as a % of pure copper.