

Actuator

704.062.7



<https://eao.com/p/704.062.7>

Your product:



704.062.7 Actuator

FRONT

Front form:	round
Front bezel material:	Aluminium
Front bezel colour:	Nature
Front dimension:	Ø 29 mm

MOUNTING

Design:	raised
---------	--------

OPERATING-/INDICATION PART

Lens shape:	flush
Lens material:	Plastic
Lens colour:	Colourless
Lens illumination:	illuminative
Lens optics:	transparent

ELECTRICAL CHARACTERISTICS

Standards:	The switches comply with the "Standards for low-voltage switching devices" DIN EN 60947-1
------------	-------------------------------------------------------------------------------------------

MECHANICAL CHARACTERISTIC

Operating Travel:	ca. 5.8 mm ± 0.2 mm
Mechanical lifetime:	≤3 Mio. cycles of operation
Switching action:	Maintained

Terminal:	Screw terminal
Weight:	0.001 kg
Operating force:	8 N

AMBIENT CONDITION

Storage temperature:	- 40 °C ... + 85 °C
IP Protection:	IP65 front side
Operating temperature:	- 40 °C ... + 55 °C

OTHER

Short Description:	Actuator, Ø 29 mm, flush, illuminative, Colourless, Plastic, transparent, round, Nature, Aluminium, anodised, Maintained, Screw terminal
---------------------------	------------------------------------------------------------------------------------------------------------------------------------------

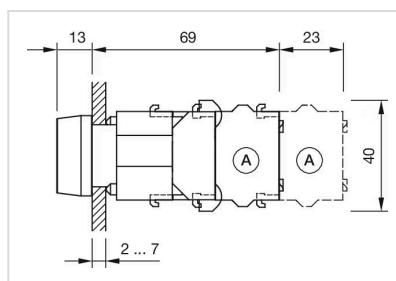
Housing colour:	Grey
------------------------	------

max. number of switching elements:	3
-------------------------------------------	---

Hints:	Frontring with protective cover to be mounted with a torque of 0.4 Nm onto actuator,Max. 3 switching elements can be clipped on
---------------	---------------------------------------------------------------------------------------------------------------------------------

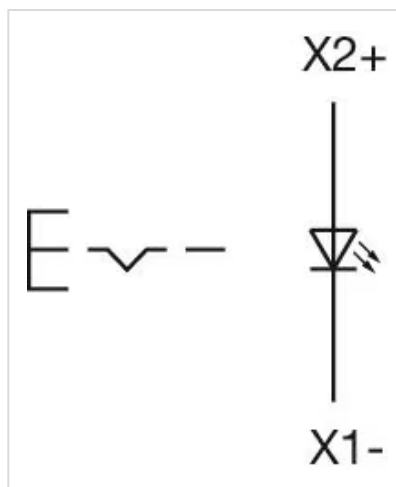
Housing material:	Plastic
--------------------------	---------

Dimension drawings:

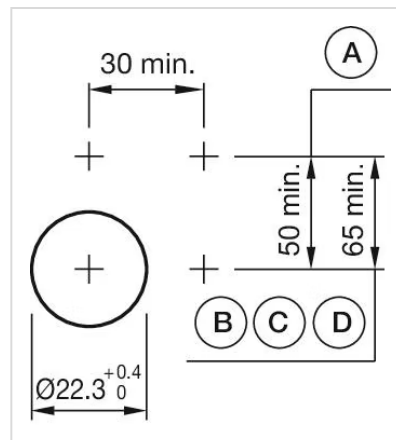


A = Screw terminal

Wiring diagrams:



Mounting cut-outs:



A = Screw terminal

B = Push-in terminal (PIT)

C = Plug-in terminal 6.3 mm x 0.8 mm

D = Double plug-in terminal 6.3 mm x 0.8 mm