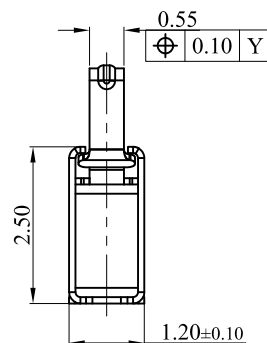
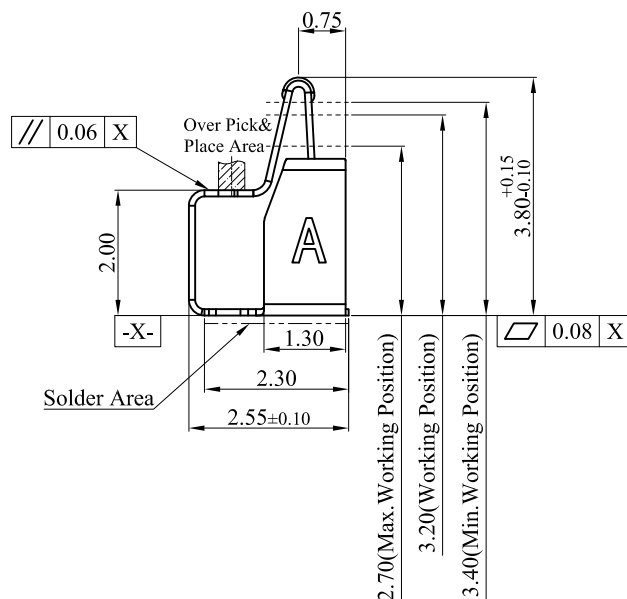
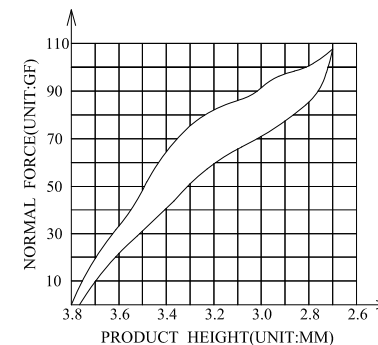


3D View



NOTES:

1:MATERIAL

1-1: SUS-301 THICKNE=0.10MM

2:SPECIFICATIONS

2-1: RATED CURRENT: 1.0A

2-2: VOLTAGE RATING: 12V

2-3: CONTACT RESISTANCE: 80mΩ/MAX

2-4: WELDING THRUST: ≥3KG

2-5: OPERATING TEMPERATURE: -40°C~+85°C

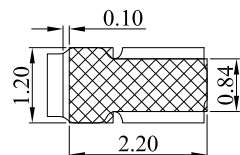
3:DURABILITY: 1500 CYCLES

4:SALT SPRAY TIME: 24H

5:ELECTROPLATE: THE NICKEL-PLATED SUBSTRATE IS 50u" MIN

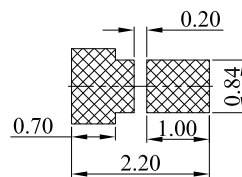
6:REQUIREMENTS

6-1: TERMINAL TO EAT FULL TIN, NOT PEELING,
WELDING OBVIOUS COLOR AND OTHER ADVERSE
6-2: ROHS、REACH、HF HALOGEN ADVERSE OF DOMESTIC
AND INTERNATIONAL ENVIRONMENTAL REQUIREMENTS



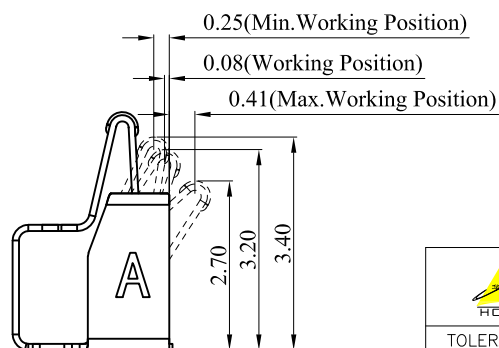
RECOMMENDED PCB LAYOUT

TOLERANCE: ±0.05MM
(FOR REFERENCE ONLY)



METAL MASK T=0.08

TOLERANCE: ±0.05MM
(FOR REFERENCE ONLY)



(For Reference Only)
Stated At Compression



深圳市华宇创精密电子有限公司

TOLERANCE: X.X ±0.30 X.XX ±0.25 X.XXX ±0.15 X.' ±2' X.X' ±0.5'	DRAWN BY : 陈一鸣	DATE : 2014-02-23	PART NAME: 天线弹片 L2.55*W1.20*H3.80	
	CHECKED BY: 马跃	DATE : 2014-02-23	PART NO. MOLD NO.	HYCW-TXT2551238A
 UNIT: mm [inch] SCALE: 1:1 SIZE: A4	APPROVED BY: 邱敏	DATE : 2014-02-23	DRAW NO: SHEET NO.	HYC-2412191608 1 OF 1