

Junior Power Timer

TE Internal #: 936567-2

2 Position Housing, Housing for Female Terminals, Wire-to-Wire, 5 mm [.196 in] Centerline, Sealable, Black, Wire & Cable, Power, Junior Power Timer

[View on TE.com >](#)



Connectors > Automotive Connectors > Automotive Housings > Timer Connector Housing



Number of Positions: 2

Connector & Housing Type: **Housing for Female Terminals**

Mating Tab Width: **2.8 mm [.11 in]**

Connector System: **Wire-to-Wire**

Centerline (Pitch): **5 mm [.196 in]**

[All Timer Connector Housing \(497\)](#)

Features

Dimensions

Product Width	33 mm[1.29 in]
Product Length	25 mm[.984 in]
Connector Height	24 mm[.944 in]

Packaging Features

Packaging Quantity	100
Packaging Method	Bag

Mechanical Attachment

Strain Relief	Without
Terminal Position Assurance	Yes
Mating Alignment Type	Polarizing Slot
Mating Alignment	With
Connector Mounting Type	Cable Mount (Free-Hanging)

Other

Serviceable	No
Connector Position Assurance Capable	No
EU RoHS Compliance	Compliant
EU ELV Compliance	Compliant



Body Features

Cable Exit Angle	180°
Primary Product Color	Black

Housing Features

Housing Material	PBT GF
Centerline (Pitch)	5 mm[.196 in]

Contact Features

Contact Size	2.8mm
Contact Type	Receptacle
Mating Tab Width	2.8 mm[.11 in]

Product Type Features

Mixed & Hybrid Connector	No
Connector Shape	Rectangular
Connector & Housing Type	Housing for Female Terminals
Connector System	Wire-to-Wire
Sealable	Yes
Primary Locking Feature	Integrated in Housing
Connector & Contact Terminates To	Wire & Cable

Configuration Features

Number of Positions	2
Number of Rows	1

Electrical Characteristics

Nominal Voltage Architecture	12 V
------------------------------	------

Usage Conditions

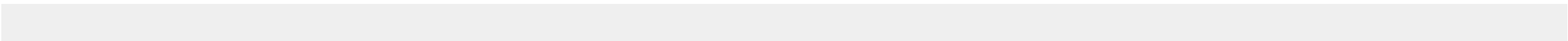
Operating Temperature (Max)	130 °C[266 °F]
Operating Temperature Range	-40 – 130 °C[-40 – 266 °F]

Operation/Application

Circuit Application	Power
---------------------	-------

Product Compliance

For compliance documentation, visit the product page on TE.com>






EU RoHS Directive 2011/65/EU	Compliant
EU ELV Directive 2000/53/EC	Compliant
China RoHS 2 Directive MIIT Order No 32, 2016	No Restricted Materials Above Threshold
EU REACH Regulation (EC) No. 1907/2006	Current ECHA Candidate List: JUNE 2024 (241) Candidate List Declared Against: JUNE 2024 (241) Does not contain REACH SVHC
Halogen Content	Not Low Halogen - contains Br or Cl > 900 ppm.
Solder Process Capability	Not applicable for solder process capability


Product Compliance Disclaimer

This information is provided based on reasonable inquiry of our suppliers and represents our current actual knowledge based on the information they provided. This information is subject to change. The part numbers that TE has identified as EU RoHS compliant have a maximum concentration of 0.1% by weight in homogenous materials for lead, hexavalent chromium, mercury, PBB, PBDE, DBP, BBP, DEHP, DIBP, and 0.01% for cadmium, or qualify for an exemption to these limits as defined in the Annexes of Directive 2011/65/EU (RoHS2). Finished electrical and electronic equipment products will be CE marked as required by Directive 2011/65/EU. Components may not be CE marked. Additionally, the part numbers that TE has identified as EU ELV compliant have a maximum concentration of 0.1% by weight in homogenous materials for lead, hexavalent chromium, and mercury, and 0.01% for cadmium, or qualify for an exemption to these limits as defined in the Annexes of Directive 2000/53/EC (ELV). Regarding the REACH Regulation, the information TE provides on SVHC in articles for this part number is based on the latest European Chemicals Agency (ECHA) ‘Guidance on requirements for substances in articles’ posted at this URL: <https://echa.europa.eu/guidance-documents/guidance-on-reach>


Compatible Parts




TE Part # 828905-1
SINGLE-WIRE-SEAL(5MM HOLE)



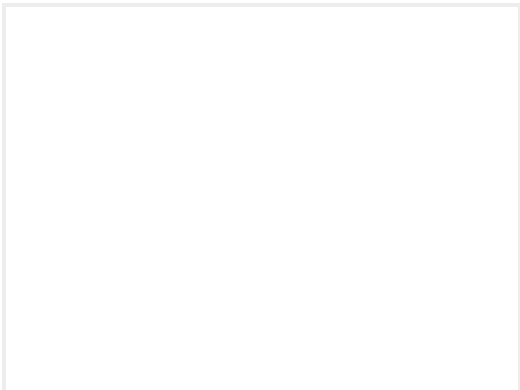
TE Part # 828904-1
SINGLE WIRE SEAL FOR J.P.T.CON




TE Part # 936458-2
COVER HSG FOR JPT 2P ASSY




TE Part # 828904-3
SINGLE WIRE SEAL FOR J.P.T.CON (5MM HOLE)



TE Part # 936566-2
JPT 2P HSG FOR LPI INJECTOR



TE Part # 828904-2
SINGLE WIRE SEAL FOR J.P.T.CON



TE Part # CAT-T4827-T273
TIMER, RECEPTACLE AND TAB

Also in the Series | Junior Power Timer



Automotive Connector Caps & Covers
(9)



Automotive Connector Locks &
Position Assurance(8)



Automotive Housings(306)



Automotive Terminals(153)



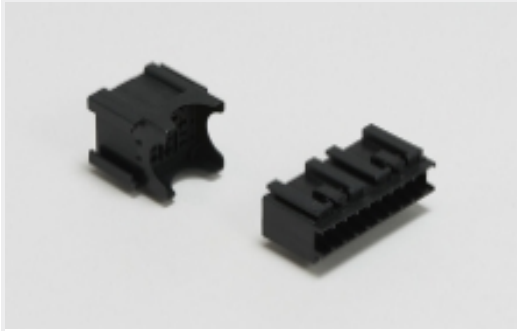
Busbars & Terminals(1)



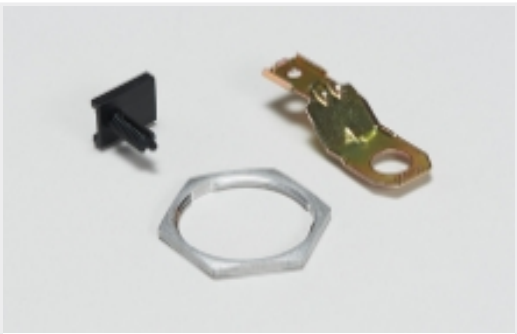
Connector Seals & Cavity Plugs(8)



Insertion & Extraction Tools(8)



Module Components(1)

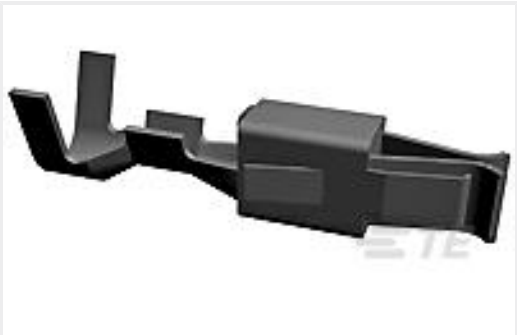


Other Automotive Connector
Accessories(2)



Special Purpose Terminals(2)

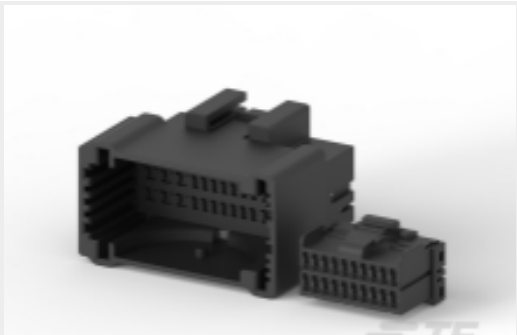
Customers Also Bought



TE Part #927766-3
JPT REC 2.8 Contact SWS Sn



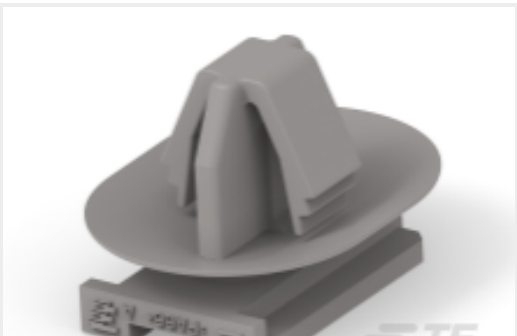
TE Part #2109006-3
060 REC(M) CONT



TE Part #CAT-M9194-CH8172
MULTILOCK, CONNECTOR HOUSING



TE Part #1743418-2
COVER HSG FOR ECU 60P PLUG



TE Part #2188213-3
CLIP FOR JOINT CONNECTOR ASSY



TE Part #2188516-1
025/060/250 LIF 41P CAP ASSY



TE Part #9-1897141-7
GET 27P PLUG ASSY W/O S-BAR



TE Part #936795-2
LEVER HSG FOR ECU 94P PLUG

Documents



Product Drawings

JPT 2P ASSY FOR LPI INJECTOR

English

CAD Files

Customer View Model

ENG_CVM_CVM_936567-2_O.2d_dxf.zip

English

3D PDF

3D

Customer View Model

ENG_CVM_CVM_936567-2_O.3d_igs.zip

English

Customer View Model

ENG_CVM_CVM_936567-2_O.3d_stp.zip

English

By downloading the CAD file I accept and agree to the [Terms and Conditions](#) of use.

Product Specifications

Application Specification

English

Instruction Sheets

Instruction Sheet (non U.S.)

English