



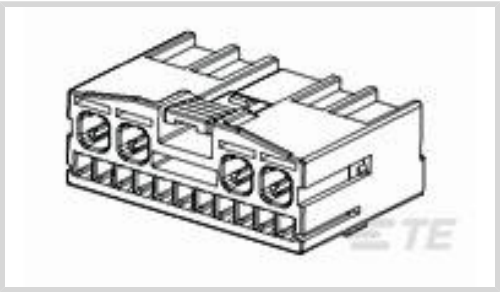
Timer Connector System

TE Internal #: 1743262-1

15 Position Housing, Housing for Female Terminals, Wire-to-Wire, 3.4 mm [.13 in] Centerline, Natural, Wire & Cable, Signal, Timer Connector System

[View on TE.com >](#)

Connectors > Automotive Connectors > Automotive Housings > Timer Connector Housing



Number of Positions: 15

Connector & Housing Type: **Housing for Female Terminals**

Mating Tab Width: 2.8 mm, 1.5 mm [.11 in, .059 in]

Connector System: **Wire-to-Wire**

Centerline (Pitch): 3.4 mm [.13 in]

[All Timer Connector Housing \(497\)](#)

Features

Dimensions

Row-to-Row Spacing	5.4 mm[.21 in]
Product Width	27.8 mm[1.09 in]
Product Length	39.7 mm[1.56 in]
Connector Height	15.3 mm[.6 in]

Packaging Features

Packaging Quantity	100
Packaging Method	Tray

Mechanical Attachment

Strain Relief	Without
Terminal Position Assurance	No
Mating Alignment Type	Polarizing Slot
Mating Alignment	With
Connector Mounting Type	Cable Mount (Free-Hanging)

Other

Serviceable	No
Connector Position Assurance Capable	No
EU RoHS Compliance	Compliant



EU ELV Compliance	Compliant
Body Features	
Cable Exit Angle	180°
Primary Product Color	Natural
Housing Features	
Housing Material	PBT
Centerline (Pitch)	3.4 mm [.13 in]
Contact Features	
Contact Size	2.8mm, 1.5mm
Contact Type	Receptacle
Mating Tab Width	2.8 mm, 1.5 mm [.11 in] [.059 in]
Product Type Features	
Mixed & Hybrid Connector	Yes
Connector Shape	Rectangular
Connector & Housing Type	Housing for Female Terminals
Connector System	Wire-to-Wire
Sealable	No
Primary Locking Feature	Integrated in Housing
Connector & Contact Terminates To	Wire & Cable
Configuration Features	
Number of Positions	15
Number of Rows	2
Operation/Application	
Circuit Application	Signal
Product Compliance	
For compliance documentation, visit the product page on TE.com>	
EU RoHS Directive 2011/65/EU	Compliant
EU ELV Directive 2000/53/EC	Compliant
China RoHS 2 Directive MIIT Order No 32, 2016	No Restricted Materials Above Threshold
EU REACH Regulation (EC) No. 1907/2006	Current ECHA Candidate List: JUNE 2024 (241)



Candidate List Declared Against: JUNE 2024 (241)
Does not contain REACH SVHC

Halogen Content	Low Halogen - Br, Cl, F, I < 900 ppm per homogenous material. Also BFR/CFR/PVC Free
Solder Process Capability	Not applicable for solder process capability

Product Compliance Disclaimer

This information is provided based on reasonable inquiry of our suppliers and represents our current actual knowledge based on the information they provided. This information is subject to change. The part numbers that TE has identified as EU RoHS compliant have a maximum concentration of 0.1% by weight in homogenous materials for lead, hexavalent chromium, mercury, PBB, PBDE, DBP, BBP, DEHP, DIBP, and 0.01% for cadmium, or qualify for an exemption to these limits as defined in the Annexes of Directive 2011/65/EU (RoHS2). Finished electrical and electronic equipment products will be CE marked as required by Directive 2011/65/EU. Components may not be CE marked. Additionally, the part numbers that TE has identified as EU ELV compliant have a maximum concentration of 0.1% by weight in homogenous materials for lead, hexavalent chromium, and mercury, and 0.01% for cadmium, or qualify for an exemption to these limits as defined in the Annexes of Directive 2000/53/EC (ELV). Regarding the REACH Regulation, the information TE provides on SVHC in articles for this part number is based on the latest European Chemicals Agency (ECHA) 'Guidance on requirements for substances in articles' posted at this URL: <https://echa.europa.eu/guidance-documents/guidance-on-reach>

Compatible Parts



TE Part # CAT-T4827-T273
TIMER, RECEPTACLE AND TAB




TE Part # 1743259-1
HYBRID 15P CAP ASSY(DTB)

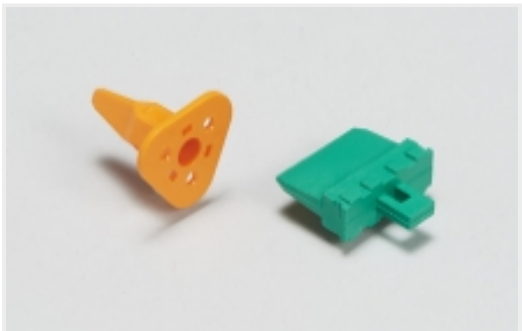


TE Part # CAT-AM705-T273
AMP MCP, RECEPTACLE AND TAB


Also in the Series | Timer Connector System




Automotive Connector Caps & Covers (13)



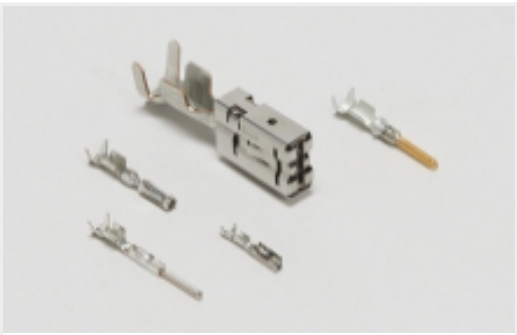
Automotive Connector Locks & Position Assurance(15)



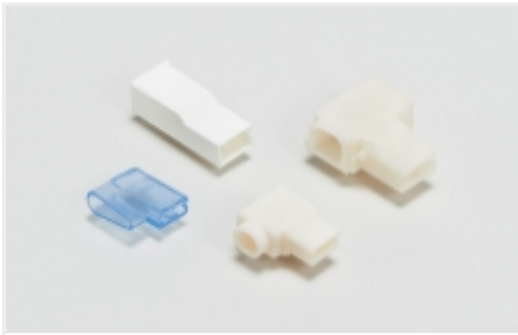
Automotive Headers(40)



Automotive Housings(207)



Automotive Terminals(110)



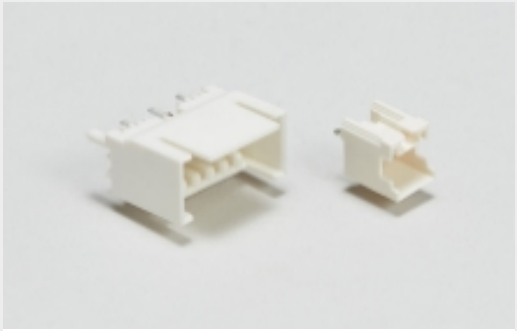
Crimp Terminal Housings(13)



Other Automotive Connector Accessories(1)

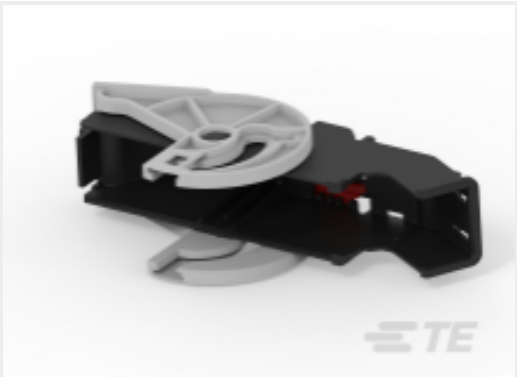


Quick Disconnects(4)



Wire-to-Board Headers & Receptacles (39)

Customers Also Bought



TE Part #4-2219072-2
ABS 46P COVER ASSY TYPE C



TE Part #1743274-2
SPT 3P PLUG COVER HSG



TE Part #2317591-2
250 5P PLUG ASSY-TYPE 1



TE Part #1743466-1
040 MK-I 2P PLUG HSG



TE Part #2109272-1
025/060/250 HYB 22P PLUG ASSY



TE Part #2315486-2
REC CONN CVR,3POS,MCON 1.2,180 DEG,SEALED



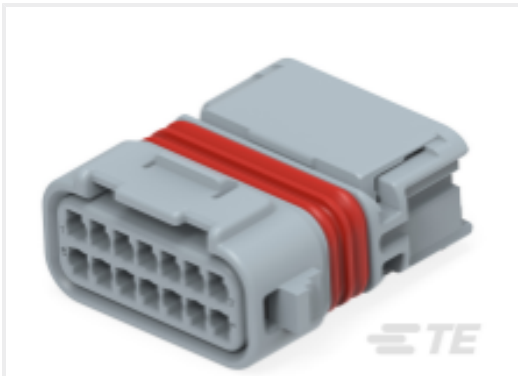
TE Part #2321370-6
TPA REC HSG,119POS,AMP MCP 2.8



TE Part #2350788-6
74POS,HYBRID,TAB HSG ASSY,UNSLD



TE Part #2373974-4
025 14P JOINT CAP ASSY TYPE D



TE Part #2373977-3
025 14P JOINT PLUG ASSY TYPE C

Documents



Product Drawings

HYBRID 15P PLUG ASSY(DTB)

English

CAD Files

3D PDF

3D

Customer View Model

ENG_CVM_CVM_1743262-1_C.2d_dxf.zip

English

Customer View Model

ENG_CVM_CVM_1743262-1_C.3d_igs.zip

English

Customer View Model

ENG_CVM_CVM_1743262-1_C.3d_stp.zip

English

By downloading the CAD file I accept and agree to the [Terms and Conditions](#) of use.