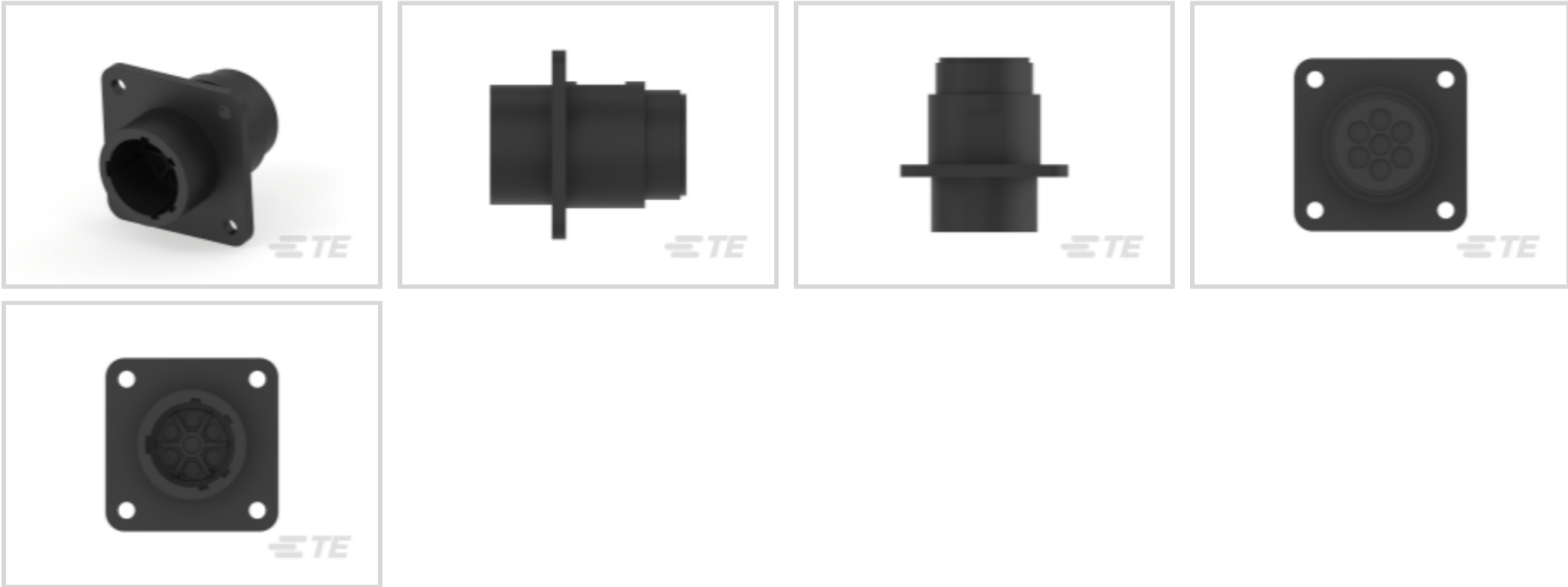




Connectors > Power Connectors > Circular Power > Circular Power Connectors



Number of Positions: 7

Connector Product Type: **Housing**

Operating Voltage: **600 VDC**

Connector System: **Wire-to-Wire**

Sealable: **No**

Features

Packaging Features

Packaging Quantity	1
Packaging Method	Package

Mechanical Attachment

Mating Retention Type	Threaded Coupling
Thread Size	3/4 - 20 UNEF-2A
Polarization Code	A
Panel Mount Feature Type	Flange with Mounting Holes
Mating Alignment Type	Keyed
Mating Alignment	With
Connector Mounting Type	Panel Mount
Mating Retention	With
Panel Mount Feature	With

Industry Standards

Compatible With Agency/Standards Products	VDE
---	-----



UL Flammability Rating	UL 94V-0
Housing Features	
Body Orientation	Straight
Housing Color	Black
Housing Material	Thermoplastic, Nylon
Circular Connector Shell Size	13
Configuration Features	
Reverse Numbering	Without
Number of Positions	7
Number of Power Positions	0
Number of Signal Positions	7
Product Type Features	
Connector Product Type	Housing
Connector System	Wire-to-Wire
Sealable	No
Connector & Contact Terminates To	Wire & Cable
Connector & Housing Type	Receptacle
Circular Connector Shell Type	All Plastic
Electrical Characteristics	
Operating Voltage	600 VAC
Contact Features	
Reverse Gender	No
Contact Type	Pin
Contact Protection	With
Usage Conditions	
Operating Temperature Range	-55 – 105 °C[-67 – 221 °F]
Fluid Resistance	None
Operation/Application	
Circuit Application	Power & Signal
Shielded	No
Other	
EU RoHS Compliance	Compliant



EU ELV Compliance	Compliant
-------------------	-----------

Product Compliance

For compliance documentation, visit the product page on TE.com>

EU RoHS Directive 2011/65/EU	Compliant
EU ELV Directive 2000/53/EC	Compliant
China RoHS 2 Directive MIIT Order No 32, 2016	No Restricted Materials Above Threshold
EU REACH Regulation (EC) No. 1907/2006	Current ECHA Candidate List: JUNE 2024 (241) Candidate List Declared Against: JUNE 2024 (241) Does not contain REACH SVHC
Halogen Content	BFR/CFR/PVC Free, but Br/Cl >900 ppm in other sources.
Solder Process Capability	Not applicable for solder process capability

Product Compliance Disclaimer

This information is provided based on reasonable inquiry of our suppliers and represents our current actual knowledge based on the information they provided. This information is subject to change. The part numbers that TE has identified as EU RoHS compliant have a maximum concentration of 0.1% by weight in homogenous materials for lead, hexavalent chromium, mercury, PBB, PBDE, DBP, BBP, DEHP, DIBP, and 0.01% for cadmium, or qualify for an exemption to these limits as defined in the Annexes of Directive 2011/65/EU (RoHS2). Finished electrical and electronic equipment products will be CE marked as required by Directive 2011/65/EU. Components may not be CE marked. Additionally, the part numbers that TE has identified as EU ELV compliant have a maximum concentration of 0.1% by weight in homogenous materials for lead, hexavalent chromium, and mercury, and 0.01% for cadmium, or qualify for an exemption to these limits as defined in the Annexes of Directive 2000/53/EC (ELV). Regarding the REACH Regulation, the information TE provides on SVHC in articles for this part number is based on the latest European Chemicals Agency (ECHA) 'Guidance on requirements for substances in articles' posted at this URL: <https://echa.europa.eu/guidance-documents/guidance-on-reach>

Compatible Parts



Also in the Series | AMP CPC



Connector Backshells(1)



Connector Caps & Covers(16)



Connector Contacts(6)



Connector Seals & Cavity Plugs(35)



Connector Strain Relief(60)

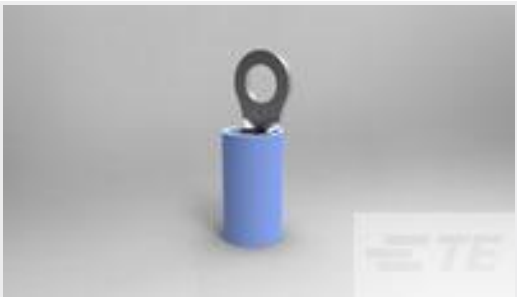


Insertion & Extraction Tools(1)



Power Contacts(6)

Customers Also Bought



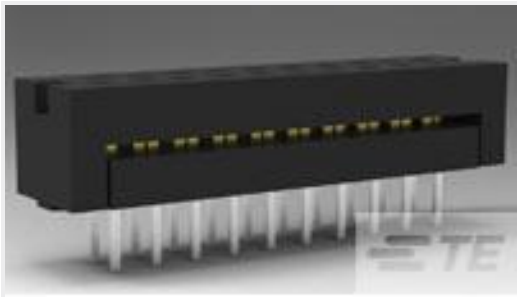
TE Part #2-36157-2  
N PIDG RING 16-14 6



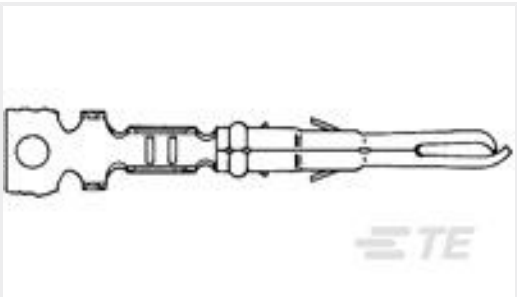
TE Part #1-2347004-6  
D2950 REC REV 6POS 1ROW TRAY AU



TE Part #211399-1  
CPC PLUG ASSEMBLY SIZE 13-7



TE Part #1-746610-9  
40 DIP PLUG, 100CL, LEAD FREE



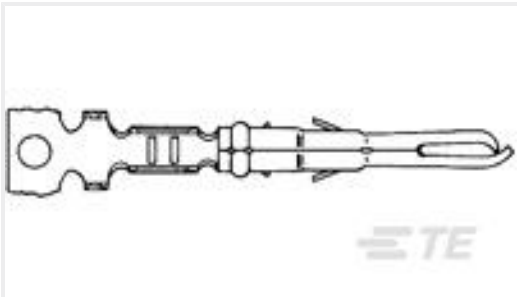
TE Part #350968-2  
MR PIN 26-24 AU/PHBZ



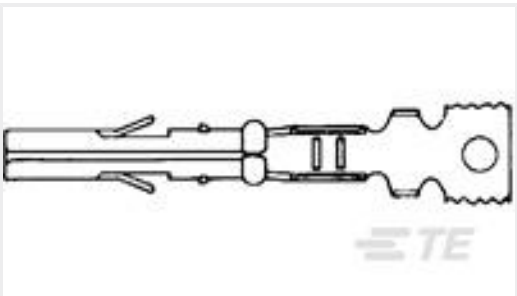
TE Part #1437565-5  
FSM103=12MM,TACTILE,PB SWITCH



TE Part #282857-3  
TERMI-BLOK PCB MOUNT 90 3P.5



TE Part #640579-2  
MR SPLIT PIN AUPHBRZ LP 26-24



TE Part #794000-1  
MR RECEPTACLE PTPPHBZ



TE Part #40777  
RING TERMINAL 20-16 AWG BR

Documents



Product Drawings

RECEPT,SZ 13-7,CPC

English

CAD Files

3D PDF

3D

Customer View Model

ENG\_CVM\_CVM\_211401-2\_AE.2d\_dxf.zip

English

Customer View Model

ENG\_CVM\_CVM\_211401-2\_AE.3d\_igs.zip

English

Customer View Model

ENG\_CVM\_CVM\_211401-2\_AE.3d\_stp.zip

English

By downloading the CAD file I accept and agree to the [Terms and Conditions](#) of use.

Product Specifications

Application Specification

English

Instruction Sheets

Instruction Sheet (U.S.)

English

Instruction Sheet (U.S.)

English

Agency Approvals

CSA Certificate

English