



Connectors > PCB Connectors > Wire-to-Board Connectors > FFC, FPC & Ribbon Connectors > FPC Connectors



Centerline (Pitch): 1.25 mm [.049 in]
Mating Retention Type: Non ZIF
PCB Mount Orientation: Vertical
Termination Method to PCB: Through Hole - Solder
Contact Mating Area Plating Material: Tin

Features

Electrical Characteristics

Operating Voltage	50 VAC
-------------------	--------

Usage Conditions

Operating Temperature Range	-40 – 85 °C[-40 – 185 °F]
-----------------------------	---------------------------

Operation/Application

Circuit Application	Signal
---------------------	--------

Product Type Features

Connector & Contact Terminates To	Printed Circuit Board, Flexible Printed Circuit (FPC)
Connector Product Type	Connector Assembly
Connector System	Flex-to-Board
PCB Connector Assembly Type	PCB Mount Receptacle

Body Features

Primary Product Color	White
-----------------------	-------

Identification Marking

Circuit Identification Feature	With
--------------------------------	------

Packaging Features

Packaging Quantity	100
Packaging Method	Tray, Box & Tray



Dimensions

Accepts Flex Cable Thickness	.3 mm[.012 in]
Connector Width	4.8 mm[.189 in]
PCB Thickness (Recommended)	1.6 mm[.063 in]
Connector Height	7.8 mm[.307 in]
Connector Length	31.25 mm[1.23 in]

Contact Features

PCB Contact Termination Area Plating Material Finish	Bright
Contact Mating Area Plating Material Thickness	.8 μm[31.49 μin]
Contact Current Rating (Max)	1 A
Contact Shape & Form	Single Beam
PCB Contact Termination Area Plating Material Thickness	.8 μm[31.49 μin]
Contact Layout	Staggered Type A
Contact Base Material	Phosphor Bronze
PCB Contact Termination Area Plating Material	Tin
Contact Type	Socket
Contact Mating Area Plating Material Finish	Bright
Contact Mating Area Plating Material	Tin

Termination Features

Termination Post & Tail Length	3.2 mm[.126 in]
Termination Method to PCB	Through Hole - Solder

Configuration Features

Compatible With Wire & Cable Type	FFC, FPC
Number of Rows	1
PCB Mount Orientation	Vertical
Number of Positions	22

Mechanical Attachment

Connector Mounting Type	Board Mount
PCB Mount Retention	With
PCB Mount Retention Type	Kinked Solder Tails
Mating Alignment	With
PCB Mount Alignment	With



Mating Retention Type

Non ZIF

Housing Features

Housing Material	PBT GF
Centerline (Pitch)	1.25 mm[.049 in]

Other

EU RoHS Compliance	Compliant
EU ELV Compliance	Compliant

Product Compliance

For compliance documentation, visit the product page on [TE.com](#)>

EU RoHS Directive 2011/65/EU	Compliant
EU ELV Directive 2000/53/EC	Compliant
China RoHS 2 Directive MIIT Order No 32, 2016	No Restricted Materials Above Threshold
EU REACH Regulation (EC) No. 1907/2006	Current ECHA Candidate List: JUNE 2024 (241) Candidate List Declared Against: JUNE 2024 (241) Does not contain REACH SVHC
Halogen Content	Not Low Halogen - contains Br or Cl > 900 ppm.
Solder Process Capability	Wave solder capable to 265°C

Product Compliance Disclaimer

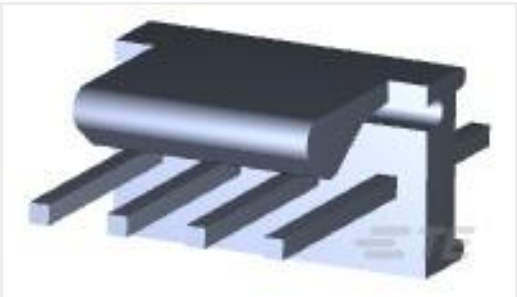
This information is provided based on reasonable inquiry of our suppliers and represents our current actual knowledge based on the information they provided. This information is subject to change. The part numbers that TE has identified as EU RoHS compliant have a maximum concentration of 0.1% by weight in homogenous materials for lead, hexavalent chromium, mercury, PBB, PBDE, DBP, BBP, DEHP, DIBP, and 0.01% for cadmium, or qualify for an exemption to these limits as defined in the Annexes of Directive 2011/65/EU (RoHS2). Finished electrical and electronic equipment products will be CE marked as required by Directive 2011/65/EU. Components may not be CE marked. Additionally, the part numbers that TE has identified as EU ELV compliant have a maximum concentration of 0.1% by weight in homogenous materials for lead, hexavalent chromium, and mercury, and 0.01% for cadmium, or qualify for an exemption to these limits as defined in the Annexes of Directive 2000/53/EC (ELV). Regarding the REACH Regulation, the information TE provides on SVHC in articles for this part number is based on the latest European Chemicals Agency (ECHA) 'Guidance on requirements for substances in articles' posted at this URL: <https://echa.europa.eu/guidance-documents/guidance-on-reach>

Compatible Parts

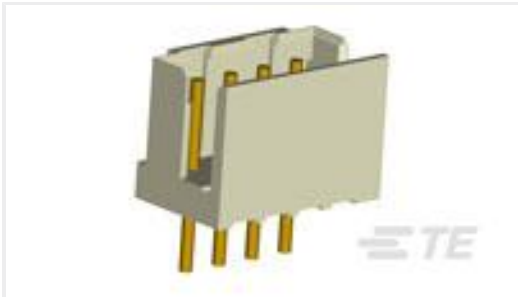


TE Part # 2-84533-2
1.25MM FFC POST PLATED H 22P

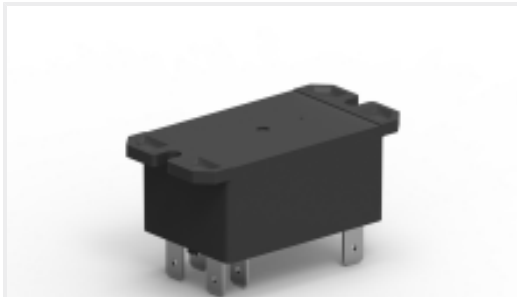
Customers Also Bought



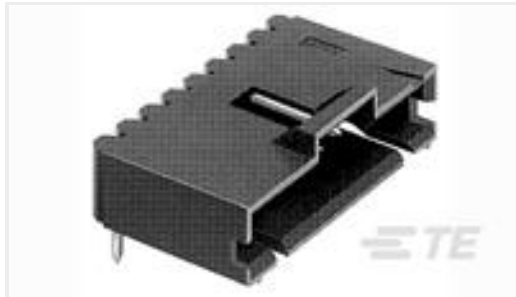
TE Part #640456-4
04P MTA100 HDR ASSY F/L SQ STR



TE Part #292132-2
CT P/HDR BOX V 2P NAT



TE Part #CAT-P851-T1B
PCB Power Relay: 40 Amp, Monostable



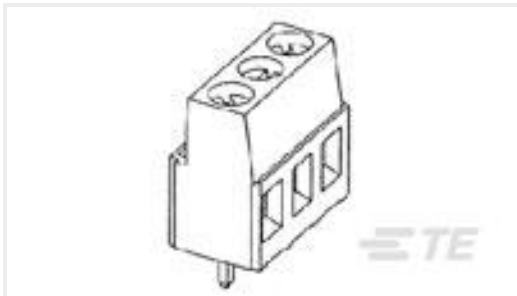
TE Part #5-103635-6
07 MTE HDR SRRA LTCH.100CL LF



TE Part #641832-1
06P UMN L PIN HDR ASSY V2 NATL



TE Part #171639-1
MINI U-M-N-L SOCKET L.P



TE Part #1-282841-0
TERMI-BLOK PCB MOUNT 10P.5



TE Part #36161
TERMINAL, PIDG R 12-10 10



TE Part #640453-9
09P MTA100 HDR ASSY SQ R/A

Documents

Product Drawings

1.25MM FFC POST PLATED V 22P

English

CAD Files

Customer View Model

ENG_CVM_CVM_2-84534-2_E.2d_dxf.zip

English

3D PDF



3D

Customer View Model

[ENG_CVM_CVM_2-84534-2_E.3d_igs.zip](#)

English

Customer View Model

[ENG_CVM_CVM_2-84534-2_E.3d_stp.zip](#)

English

By downloading the CAD file I accept and agree to the [Terms and Conditions](#) of use.

Datasheets & Catalog Pages

[FPC Connector Family](#)

English

[1-1773959-7-FPC-Connectors-CN](#)

English

Product Specifications

[Product Specification](#)

English