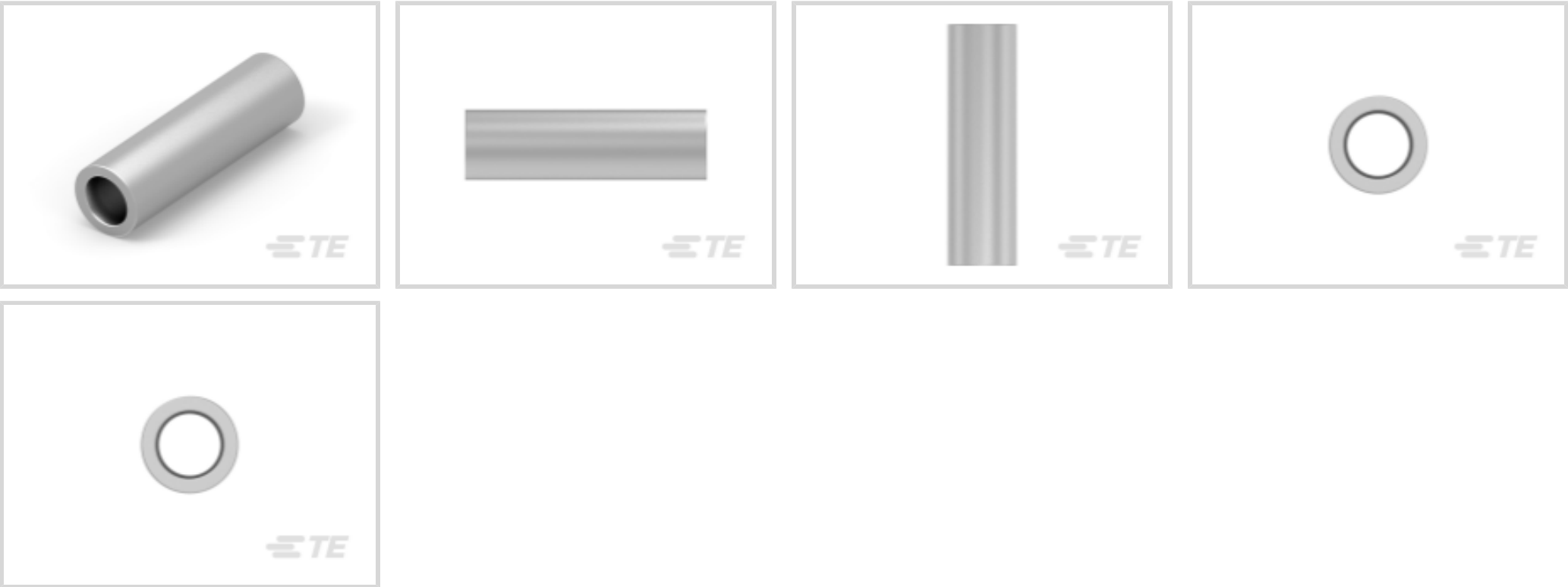




Terminals & Splices > Splices



Splice Type: **Butt Splice**  
Wire Size: **1.25 – 2 mm²**  
Sealable: **No**  
Splice Features: **Serrated**

Features

Packaging Features

Packaging Quantity	100
Packaging Method	Loose Piece

Contact Features

Terminal Plating Thickness	2.54 µm[100 µin]
Terminal Plating Material	Tin
Contact Base Material	Copper
Barrel Type	Closed

Dimensions

Recovered Inside Diameter	2.16 mm[.085 in]
Outside Diameter	4.19 mm[.165 in]
Wire Size	2050 – 5180 CMA
Barrel Inside Diameter	2.16 mm[.085 in]
Terminal Material Thickness	.84 mm[.033 in]
Product Length	14.4 mm[.567 in]



Product Type Features

Splice Accessory Type	Splice
Splice Type	Butt Splice
Sealable	No
Compatible With Discrete Wire Type	Solid, Stranded
Wire Insulation Support Retention Type	Non-Insulation Support

Configuration Features

Number of Serrations	16
Compatible With Wire & Cable Type	Discrete Wire

Body Features

Splice Features	Serrated
-----------------	----------

Mechanical Attachment

Wire Insulation Support	Without
-------------------------	---------

Usage Conditions

Insulation Option	Uninsulated
-------------------	-------------

Operation/Application

Compatible With Wire Base Material	Copper
------------------------------------	--------

Industry Standards

Government Qualified Splice	No
-----------------------------	----

Other

EU RoHS Compliance	Compliant
EU ELV Compliance	Compliant

Product Compliance

For compliance documentation, visit the product page on TE.com>

EU RoHS Directive 2011/65/EU	Compliant
EU ELV Directive 2000/53/EC	Compliant
China RoHS 2 Directive MIIT Order No 32, 2016	No Restricted Materials Above Threshold
EU REACH Regulation (EC) No. 1907/2006	Current ECHA Candidate List: JUNE 2024 (241) Candidate List Declared Against: JUNE 2024 (241) Does not contain REACH SVHC

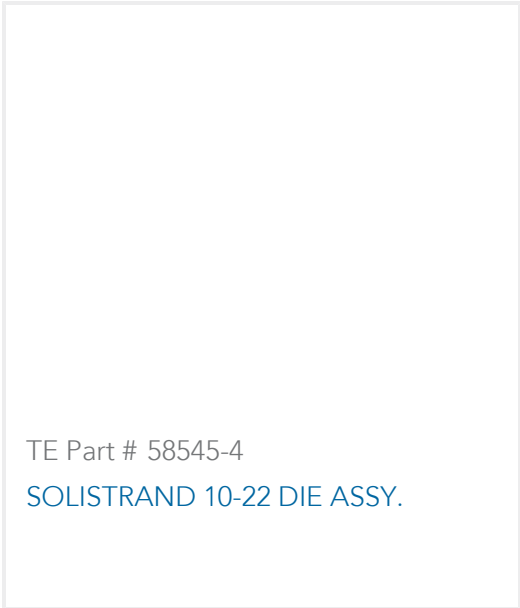


Halogen Content	Low Halogen - Br, Cl, F, I < 900 ppm per homogenous material. Also BFR/CFR/PVC Free
Solder Process Capability	Not applicable for solder process capability


Product Compliance Disclaimer

This information is provided based on reasonable inquiry of our suppliers and represents our current actual knowledge based on the information they provided. This information is subject to change. The part numbers that TE has identified as EU RoHS compliant have a maximum concentration of 0.1% by weight in homogenous materials for lead, hexavalent chromium, mercury, PBB, PBDE, DBP, BBP, DEHP, DIBP, and 0.01% for cadmium, or qualify for an exemption to these limits as defined in the Annexes of Directive 2011/65/EU (RoHS2). Finished electrical and electronic equipment products will be CE marked as required by Directive 2011/65/EU. Components may not be CE marked. Additionally, the part numbers that TE has identified as EU ELV compliant have a maximum concentration of 0.1% by weight in homogenous materials for lead, hexavalent chromium, and mercury, and 0.01% for cadmium, or qualify for an exemption to these limits as defined in the Annexes of Directive 2000/53/EC (ELV). Regarding the REACH Regulation, the information TE provides on SVHC in articles for this part number is based on the latest European Chemicals Agency (ECHA) 'Guidance on requirements for substances in articles' posted at this URL: <https://echa.europa.eu/guidance-documents/guidance-on-reach>

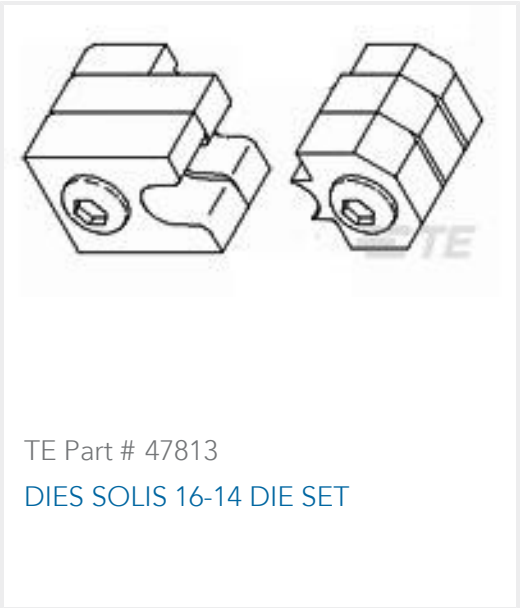
Compatible Parts




TE Part # 58545-4  
SOLISTRAND 10-22 DIE ASSY.




TE Part # 49935  
DAHT SOLIS 22-10 ASSY




TE Part # 47813  
DIES SOLIS 16-14 DIE SET




TE Part # 58545-3  
SDE DIE ASSY. 22-10 SOLISTRAND



TE Part # 58545-1  
SOLISTRAND 10-22 DIE ASSY



TE Part # 169400  
CERTI-LOK FRAME W/O DIES



TE Part # 58546-1  
PC 22-10 SOLISSPICE SPL I SHT

Customers Also Bought



TE Part #402297-000  
202D121-25/225-0



TE Part #8947570001  
HT-SCE-1-2.0-9



TE Part #ABC03N-20P-4048  
IN-LINE RECP



TE Part #322819  
TERMINAL,SOLIS FLAG R 16-14 10



TE Part #ABC06N-20P-4048  
[IN-LINE PLUG](#)



TE Part #650098-000  
[D-436-75](#)



TE Part #ABC03O-20P-4048  
[IN-LINE RECP](#)



TE Part #ABC06O-20P-4048  
[IN-LINE PLUG](#)



TE Part #ABC06P-20P-4048  
[IN-LINE PLUG](#)

Documents

[Product Drawings](#)  
[SPLICE,SOLIS BUTT 16-14](#)

English

[CAD Files](#)  
[3D PDF](#)

3D

[Customer View Model](#)  
[ENG\\_CVM\\_CVM\\_8-330368-1\\_H.2d\\_dxf.zip](#)

English

[Customer View Model](#)  
[ENG\\_CVM\\_CVM\\_8-330368-1\\_H.3d\\_igs.zip](#)

English

[Customer View Model](#)  
[ENG\\_CVM\\_CVM\\_8-330368-1\\_H.3d\\_stp.zip](#)

English

By downloading the CAD file I accept and agree to the [Terms and Conditions](#) of use.

[Datasheets & Catalog Pages](#)  
[SOLISTRAND - QRG](#)

English

[Instruction Sheets](#)  
[Instruction Sheet \(U.S.\)](#)

English