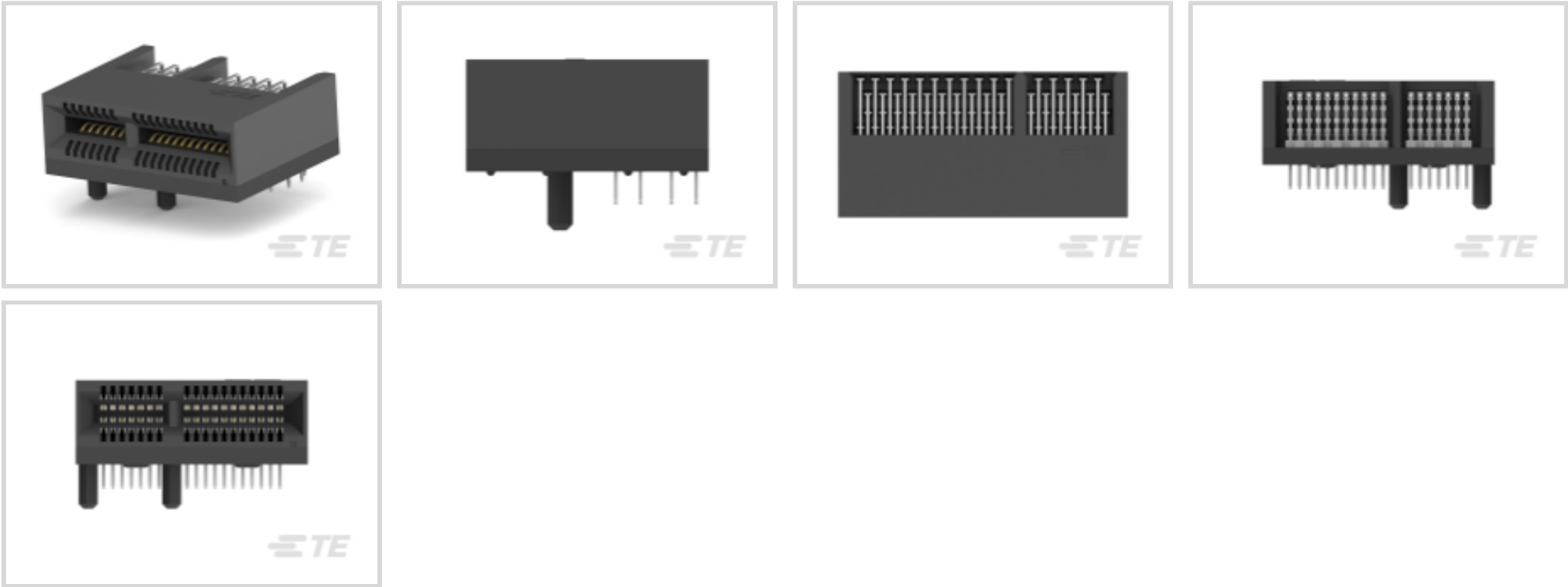




Connectors > PCB Connectors > Card Edge Connectors > PCI & PCI Express Connectors



Connector System: **Board-to-Board**

Number of Positions: **36**

Centerline (Pitch): **1 mm [.039 in]**

Termination Post & Tail Length: **3.1 mm [.122 in]**

Contact Mating Area Plating Material Thickness: **[30 µin]**

Features

Mechanical Attachment

Connector Mounting Type	Board Mount
-------------------------	-------------

Electrical Characteristics

Operating Voltage	50 VAC
-------------------	--------

Industry Standards

Bus Type	PCI Express
----------	-------------

Packaging Features

Packaging Method	Tray, Box & Tray
Packaging Quantity	100

Dimensions

PCB Thickness (Accepted)	1.57 mm[.062 in]
Connector Height	9.4 mm[.37 in]
Connector Width	19.6 mm[.772 in]

Body Features

Product Weight	21.302 g
----------------	----------



Primary Product Color

Black

Contact Features

Contact Current Rating (Max)	1.1 A
Contact Underplating Material	Nickel
Contact Mating Area Plating Material	Gold
Contact Base Material	Phosphor Bronze
PCB Contact Termination Area Plating Material	Tin
	30 µin

Termination Features

Termination Method to PCB	Through Hole - Solder
Termination Post & Tail Length	3.1 mm[.122 in]

Housing Features

Housing Material	High Temperature Nylon
Centerline (Pitch)	1 mm[.039 in]

Configuration Features

Number of PCB Mount Retention Features	2
Number of Positions	36
PCB Mount Orientation	Right Angle
Ejector	Without

Product Type Features

Connector & Contact Terminates To	Printed Circuit Board
Connector System	Board-to-Board
Sealable	No

Usage Conditions

Operating Temperature Range	-40 – 85 °C[-40 – 185 °F]
-----------------------------	---------------------------

Operation/Application

Circuit Application	Signal
---------------------	--------

Other

EU RoHS Compliance	Compliant
EU ELV Compliance	Compliant

Product Compliance



For compliance documentation, visit the product page on [TE.com](#)>

EU RoHS Directive 2011/65/EU	Compliant
EU ELV Directive 2000/53/EC	Compliant
China RoHS 2 Directive MIIT Order No 32, 2016	No Restricted Materials Above Threshold
EU REACH Regulation (EC) No. 1907/2006	Current ECHA Candidate List: JUNE 2024 (241) Candidate List Declared Against: JUNE 2024 (241) Does not contain REACH SVHC
Halogen Content	Not Low Halogen - contains Br or Cl > 900 ppm.
Solder Process Capability	Wave solder capable to 265°C

Product Compliance Disclaimer

This information is provided based on reasonable inquiry of our suppliers and represents our current actual knowledge based on the information they provided. This information is subject to change. The part numbers that TE has identified as EU RoHS compliant have a maximum concentration of 0.1% by weight in homogenous materials for lead, hexavalent chromium, mercury, PBB, PBDE, DBP, BBP, DEHP, DIBP, and 0.01% for cadmium, or qualify for an exemption to these limits as defined in the Annexes of Directive 2011/65/EU (RoHS2). Finished electrical and electronic equipment products will be CE marked as required by Directive 2011/65/EU. Components may not be CE marked. Additionally, the part numbers that TE has identified as EU ELV compliant have a maximum concentration of 0.1% by weight in homogenous materials for lead, hexavalent chromium, and mercury, and 0.01% for cadmium, or qualify for an exemption to these limits as defined in the Annexes of Directive 2000/53/EC (ELV). Regarding the REACH Regulation, the information TE provides on SVHC in articles for this part number is based on the latest European Chemicals Agency (ECHA) 'Guidance on requirements for substances in articles' posted at this URL: <https://echa.europa.eu/guidance-documents/guidance-on-reach>

Compatible Parts



TE Part # 1734774-1
PCI EXP 3.1L 36 POS WHT G/F

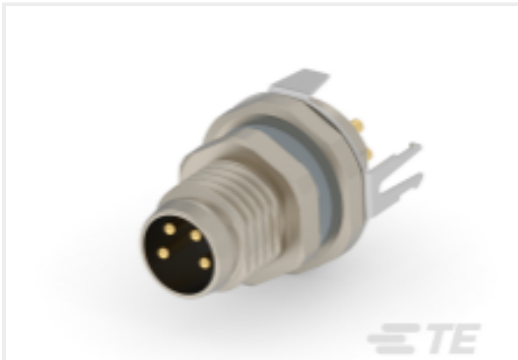


TE Part # 5-2337939-4
PCIE GEN4 CON,SMT,164POS,30u", MYLAR,HT

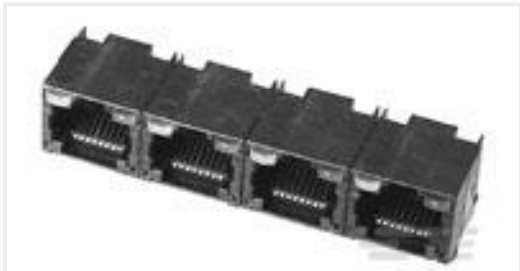
Customers Also Bought



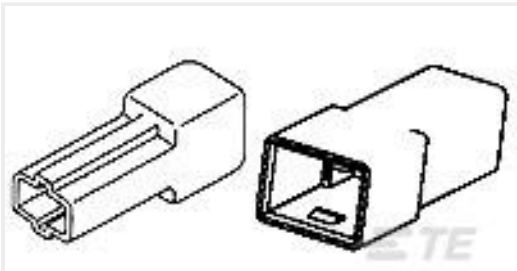
TE Part #5-2176230-2
3522 15K 5% 3W



TE Part #T4040034041-000
M8.MLE.PNLREAR.4POS.STR
PCBSHLD



TE Part #5557562-1
MOD JK ASSY,4PORT,8POSN,RTANG



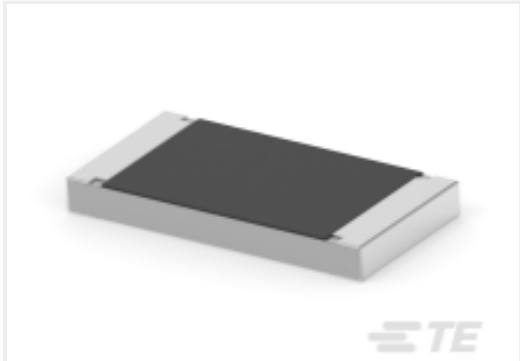
TE Part #180916
FF 250 TAB HSG 1P NYLON NAT



TE Part #6-534206-6
32 MODII VRT DR CE 100/115



TE Part #6-535541-8
20 MODIV VRT SR CE 100/115



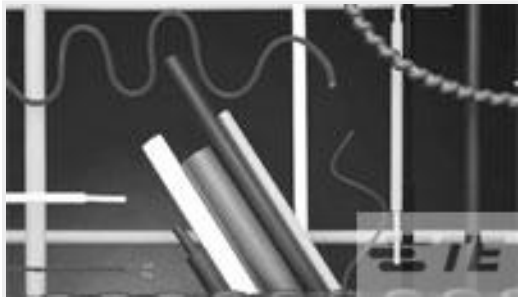
TE Part #2176350-7
CRGCQ 2512 10R 5%



TE Part #5747834-4
25 MSFL PLUG RA 590 (IN,FM,BL)



TE Part #8-1437621-6
KFS400B1/8=KNOB ALUM BLACK
ANO



TE Part #5069724010
CGPT-6.4/3.2-X-SP

Documents

CAD Files

3D PDF

3D

Customer View Model

ENG_CVM_CVM_1-1761465-1_C.2d_dxf.zip

English

Customer View Model

ENG_CVM_CVM_1-1761465-1_C.3d_igs.zip

English

Customer View Model

ENG_CVM_CVM_1-1761465-1_C.3d_stp.zip

English

By downloading the CAD file I accept and agree to the Terms and Conditions of use.

Datasheets & Catalog Pages

4-1773442-7 Card Edge Connector for PCI Express Applications

English

Product Specifications

1-1761465-1

Board-to-Board, 36 Position, 1 mm [.039 in] Centerline, Right Angle, Black, Height 9.4 mm [.37 in], PCI & PCI Express Connectors



Application Specification

English