



Connectors > Terminal Blocks & Strips > Barrier Strips



Number of Positions: 2

Barrier Strip Style: **Dual Barrier**

Bottom Termination Type: **Printed Circuit Pin**

Connector System: **Wire-to-Board**

Centerline (Pitch): **9.53 mm [.375 in]**

Features

Industry Standards

UL Flammability Rating	UL 94V-0
------------------------	----------

Packaging Features

Packaging Method	Package
Packaging Quantity	400

Operation/Application

Circuit Application	Power
---------------------	-------

Mechanical Attachment

Top Termination Type	Wire Clamp Combo Head
Mounting Options	None
Screw Plating Material	Zinc Chromate
Screw Material	Steel
Thread Size	6-32
Screw Head Type	Wire Clamp Combo Head
Connector Mounting Type	Board Mount



Contact Features	
Contact Base Material	Copper Alloy
Mating Tab Thickness	.81 mm[.032 in]
PCB Contact Termination Area Plating Material	Tin
Mating Tab Width	6.35 mm[.25 in]
Contact Current Rating (Max)	20 A, 5 A
Dimensions	
Product Length	20.6 mm[.811 in]
Wire Size	22 – 12 AWG
Housing Features	
Housing Material	Thermoplastic
Centerline (Pitch)	9.53 mm[.375 in]
Product Type Features	
Block Style	Flat Bottom with standoffs
Connector System	Wire-to-Board
Connector & Contact Terminates To	Printed Circuit Board
Body Features	
Primary Product Color	Black
Product Orientation	Vertical
Barrier Strip Style	Dual Barrier
Configuration Features	
Number of Levels	1
Number of Positions	2
Number of Rows	1
Termination Features	
Bottom Termination Type	Printed Circuit Pin
Electrical Characteristics	
Operating Voltage	300 V, 600 V
Other	
EU RoHS Compliance	Compliant
EU ELV Compliance	Compliant



Product Compliance

For compliance documentation, visit the product page on TE.com>

EU RoHS Directive 2011/65/EU	Compliant
EU ELV Directive 2000/53/EC	Compliant
China RoHS 2 Directive MIIT Order No 32, 2016	No Restricted Materials Above Threshold
EU REACH Regulation (EC) No. 1907/2006	Current ECHA Candidate List: JUNE 2024 (241) Candidate List Declared Against: JUNE 2024 (241) Does not contain REACH SVHC
Halogen Content	Low Halogen - Br, Cl, F, I < 900 ppm per homogenous material. Also BFR/CFR/PVC Free
Solder Process Capability	Wave solder capable to 265°C

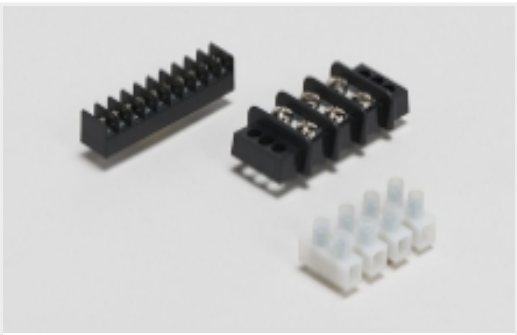
Product Compliance Disclaimer

This information is provided based on reasonable inquiry of our suppliers and represents our current actual knowledge based on the information they provided. This information is subject to change. The part numbers that TE has identified as EU RoHS compliant have a maximum concentration of 0.1% by weight in homogenous materials for lead, hexavalent chromium, mercury, PBB, PBDE, DBP, BBP, DEHP, DIBP, and 0.01% for cadmium, or qualify for an exemption to these limits as defined in the Annexes of Directive 2011/65/EU (RoHS2). Finished electrical and electronic equipment products will be CE marked as required by Directive 2011/65/EU. Components may not be CE marked. Additionally, the part numbers that TE has identified as EU ELV compliant have a maximum concentration of 0.1% by weight in homogenous materials for lead, hexavalent chromium, and mercury, and 0.01% for cadmium, or qualify for an exemption to these limits as defined in the Annexes of Directive 2000/53/EC (ELV). Regarding the REACH Regulation, the information TE provides on SVHC in articles for this part number is based on the latest European Chemicals Agency (ECHA) ‘Guidance on requirements for substances in articles’ posted at this URL: <https://echa.europa.eu/guidance-documents/guidance-on-reach>

Compatible Parts

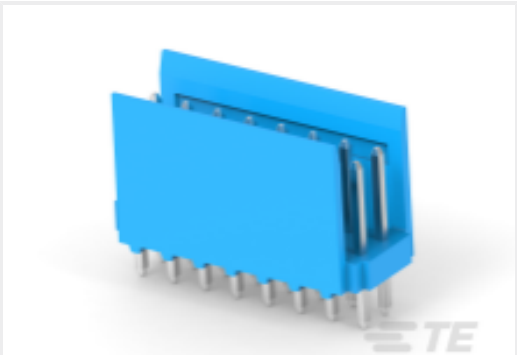


Also in the Series | [Buchanan JC6 Series](#)

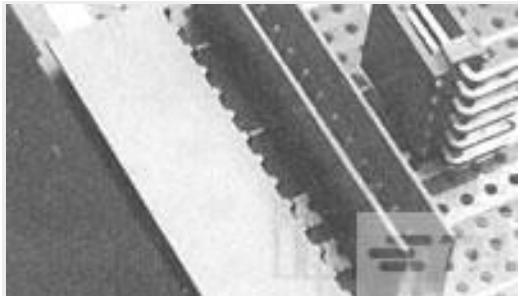


Barrier Strips(109)

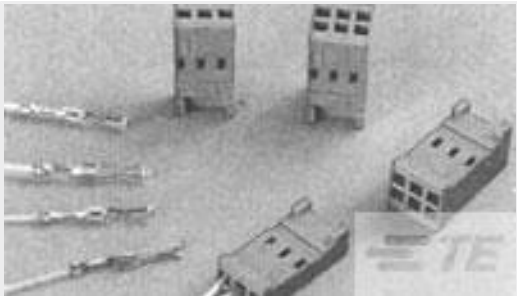
Customers Also Bought



TE Part #CAT-AM74-H3401B
HE13/HE14 TH Headers, DRST



TE Part #281696-4
HEADER HE13 STRAIGHT 4 P



TE Part #188746-1
CONTACT REC HE13 COSI GOLD PLATED



TE Part #34105
SOLIS R 22-16 COMM 22-18 MIL 6 PLATED



TE Part #8-1879212-2
CPF 0402 16R5 0.1% 25PPM 1K RL



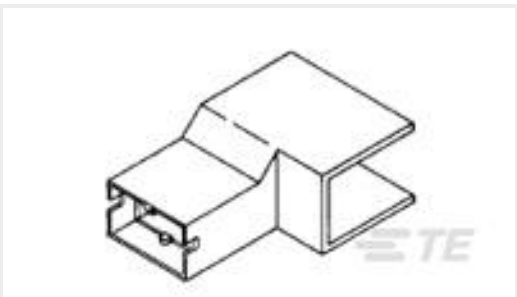
TE Part #1-1879208-7
CPF 0402 47R 0.1% 25PPM 1K RL



TE Part #CONSMA014
SMA Jack 50 Ohm Cable Crimp Panel Mount



TE Part #5-146252-8
16 MODII HDR DRST B/A .100 LF



TE Part #926291-1
PL 250 HOUSING FLAG PA 6.6 BLACK

Documents

Product Drawings

JC6-P108-02=JC6 ASSEMBLY

English

CAD Files

Customer View Model

ENG_CVM_CVM_2-1437665-0_N.3d_stp.zip

English

Customer View Model



[ENG_CVM_CVM_2-1437665-0_N.2d_dxf.zip](#)

English

[3D PDF](#)

3D

Customer View Model

[ENG_CVM_CVM_2-1437665-0_N.3d_igs.zip](#)

English

By downloading the CAD file I accept and agree to the [Terms and Conditions](#) of use.

Datasheets & Catalog Pages

[1-1773458-2_BARRIER_STRIPS_QUICK_REFERENCE_GUIDE](#)

English