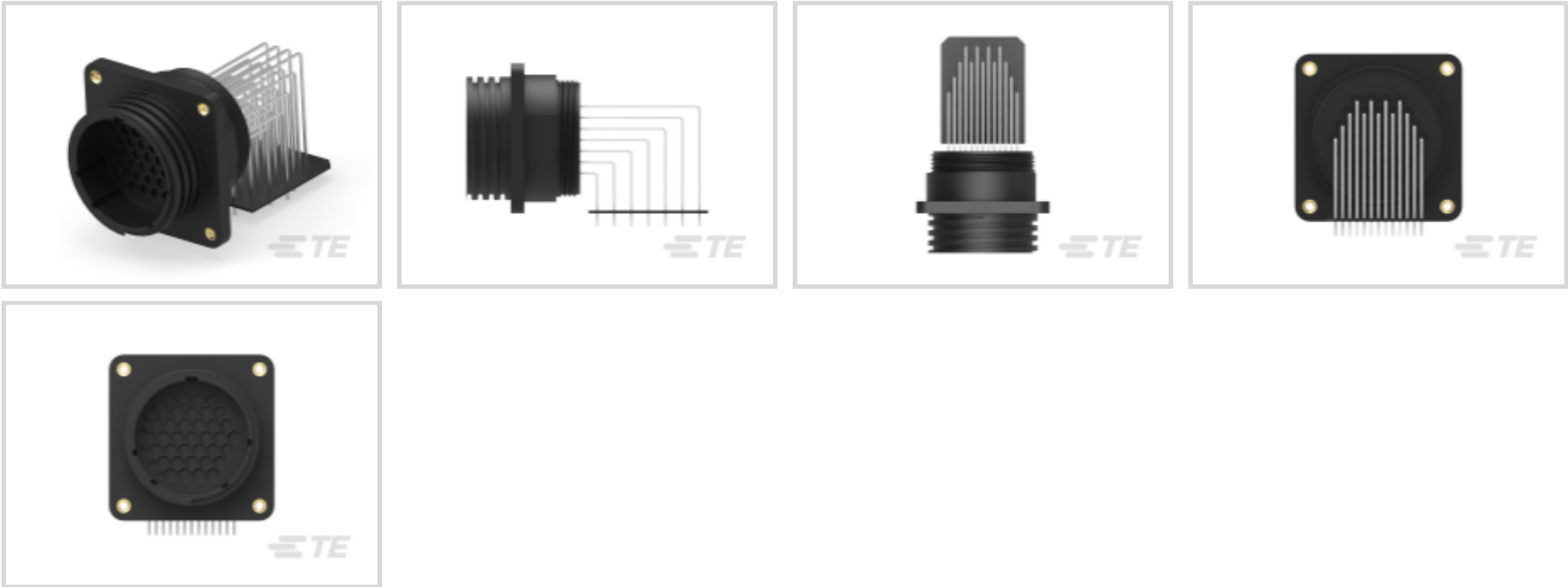




Connectors > Power Connectors > Circular Power > Circular Power Connectors



Number of Positions: 37
Connector Product Type: Connector Assembly
Operating Voltage: 250 VDC
Connector System: Wire-to-Board, Wire-to-Panel
Sealable: Yes

Features

Termination Features

Termination Method to PCB	Through Hole - Solder
---------------------------	-----------------------

Packaging Features

Packaging Quantity	8
Packaging Method	Tray

Mechanical Attachment

Panel Mount Feature Type	Flange with Threaded Inserts
Mating Alignment Type	Keyed
Mating Retention Type	Threaded Coupling
Mating Alignment	With
Connector Mounting Type	Panel Mount
Mating Retention	With
Panel Mount Feature	With

Configuration Features

Number of Positions	37
---------------------	----



Number of Power Positions	0
Number of Signal Positions	37

Product Type Features

Connector Product Type	Connector Assembly
Connector System	Wire-to-Board, Wire-to-Panel
Sealable	Yes
Connector & Housing Type	Receptacle
Circular Connector Shell Type	All Plastic

Electrical Characteristics

Operating Voltage	250 VAC
-------------------	---------

Contact Features

Reverse Gender	No
Contact Type	Pin

Housing Features

Housing Color	Black
Housing Material	PA 6.6
Circular Connector Shell Size	23

Dimensions

Assembly Length	71.88 mm[2.83 in]
-----------------	-------------------

Usage Conditions

Operating Temperature Range	-55 – 105 °C[-67 – 221 °F]
Fluid Resistance	Immersion

Operation/Application

Circuit Application	Signal
Shielded	No

Industry Standards

UL Flammability Rating	UL 94V-0
------------------------	----------

Other

EU RoHS Compliance	Compliant with Exemptions
EU ELV Compliance	Compliant with Exemptions



Product Compliance

For compliance documentation, visit the product page on TE.com>

EU RoHS Directive 2011/65/EU	Compliant with Exemptions
EU ELV Directive 2000/53/EC	Compliant with Exemptions
China RoHS 2 Directive MIIT Order No 32, 2016	Restricted Materials Above Threshold
EU REACH Regulation (EC) No. 1907/2006	Current ECHA Candidate List: JUNE 2024 (241) Candidate List Declared Against: JUNE 2024 (241) SVHC > Threshold: Pb (3.7% in Component Part) Article Safe Usage Statements: Do not eat, drink or smoke when using this product. Wash thoroughly after handling. Recycle if possible and dispose of the article by following all applicable governmental regulations relevant to your geographic location.
Halogen Content	BFR/CFR/PVC Free, but Br/Cl >900 ppm in other sources.
Solder Process Capability	Wave solder capable to 265°C

Product Compliance Disclaimer

This information is provided based on reasonable inquiry of our suppliers and represents our current actual knowledge based on the information they provided. This information is subject to change. The part numbers that TE has identified as EU RoHS compliant have a maximum concentration of 0.1% by weight in homogenous materials for lead, hexavalent chromium, mercury, PBB, PBDE, DBP, BBP, DEHP, DIBP, and 0.01% for cadmium, or qualify for an exemption to these limits as defined in the Annexes of Directive 2011/65/EU (RoHS2). Finished electrical and electronic equipment products will be CE marked as required by Directive 2011/65/EU. Components may not be CE marked. Additionally, the part numbers that TE has identified as EU ELV compliant have a maximum concentration of 0.1% by weight in homogenous materials for lead, hexavalent chromium, and mercury, and 0.01% for cadmium, or qualify for an exemption to these limits as defined in the Annexes of Directive 2000/53/EC (ELV). Regarding the REACH Regulation, the information TE provides on SVHC in articles for this part number is based on the latest European Chemicals Agency (ECHA) 'Guidance on requirements for substances in articles' posted at this URL: <https://echa.europa.eu/guidance-documents/guidance-on-reach>

Compatible Parts



Also in the Series | AMP CPC



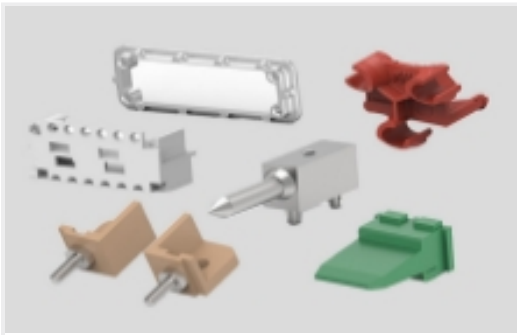
Circular Connector Backshells & Clamps(1)



Circular Power Connectors(423)



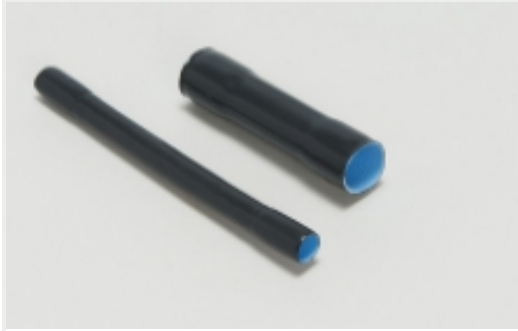
Connector Contacts(6)



Connector Hardware(12)

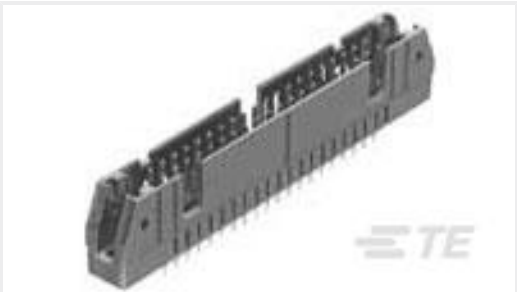


Power Contacts(6)



Sealing Sleeves(2)

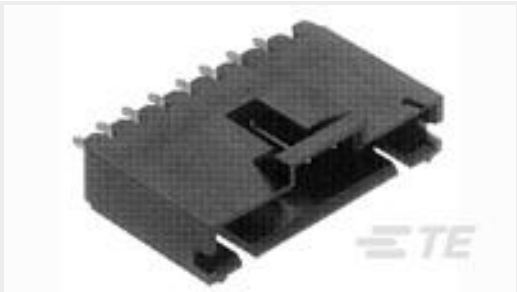
Customers Also Bought



TE Part #1658694-5
AMP-LATCH UNV HDR,64 POSN,VERT



TE Part #8-2176070-0
3521 20K 1% 2W



TE Part #5-103669-1
02 MTE HDR SRST LATCH W/HLDWN



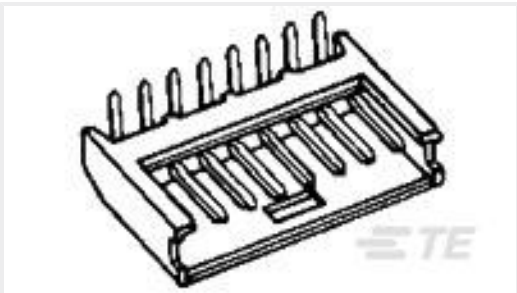
TE Part #2-644487-5
05P MTA100 SHRD HDR ASSY 30AU



TE Part #207446-4
SEALING CAP ASSY,SZ 23,CPC



TE Part #1-1614353-6
RN 0603 30K1 0.1% 10PPM CUT LENGTH



TE Part #280380-2
8P MODU II SHRD HDR,RT ANG, 0.38 AU



TE Part #224514-E
MSPEED 50 F SMD F8 * AB W 137 094 ** E



TE Part #9-331350-3
BNC PLUG PTFE



TE Part #2-2176306-3
RP 1E 0.1W 1K96 0.1% 25PPM 5K RL

Documents



CAD Files

3D PDF

3D

Customer View Model

ENG_CVM_CVM_1-796406-2_J.2d_dxf.zip

English

Customer View Model

ENG_CVM_CVM_1-796406-2_J.3d_igs.zip

English

Customer View Model

ENG_CVM_CVM_1-796406-2_J.3d_stp.zip

English

By downloading the CAD file I accept and agree to the [Terms and Conditions](#) of use.

Product Specifications

Application Specification

English

Instruction Sheets

Instruction Sheet (U.S.)

English

Instruction Sheet (U.S.)

English