



Passive Components > Resistors > Surface Mount Resistors



Resistor Type: **General Purpose Resistor**

Element Type: **Thick Film**

Package Size Code: **2010**

Power Rating: **1.25 W**

Resistance Value: **82 Ω**

Features

Electrical Characteristics

Operating Voltage	400 V
Power Rating	1.25 W
Resistance Value	82 Ω
Resistance Class	Up to 1kΩ
Passive Component Tolerance	1 %

Product Type Features

Resistor Type	General Purpose Resistor
Element Type	Thick Film
Package Size Code	2010

Configuration Features

Number of Resistors	1
---------------------	---

Termination Features

Surface Mount Resistor Termination Type	Solder
Number of Terminations	2

Dimensions

Product Height	.55 mm[.022 in]
Product Length	5 mm[.197 in]
Product Width	2.5 mm[.098 in]



Usage Conditions

Temperature Coefficient	±100 ppm/°C
-------------------------	-------------

Packaging Features

Packaging Method	Taped & Reeled
------------------	----------------

Other

EU RoHS Compliance	Compliant with Exemptions
EU ELV Compliance	Compliant with Exemptions

Product Compliance

For compliance documentation, visit the product page on TE.com>

EU RoHS Directive 2011/65/EU	Compliant with Exemptions
EU ELV Directive 2000/53/EC	Compliant with Exemptions
China RoHS 2 Directive MIIT Order No 32, 2016	Restricted Materials Above Threshold
EU REACH Regulation (EC) No. 1907/2006	Current ECHA Candidate List: JUNE 2024 (241) Candidate List Declared Against: JUNE 2023 (235) Does not contain REACH SVHC
Halogen Content	Low Halogen - Br, Cl, F, I < 900 ppm per homogenous material. Also BFR/CFR/PVC Free
Solder Process Capability	Reflow solder capable to 260°C

Product Compliance Disclaimer

This information is provided based on reasonable inquiry of our suppliers and represents our current actual knowledge based on the information they provided. This information is subject to change. The part numbers that TE has identified as EU RoHS compliant have a maximum concentration of 0.1% by weight in homogenous materials for lead, hexavalent chromium, mercury, PBB, PBDE, DBP, BBP, DEHP, DIBP, and 0.01% for cadmium, or qualify for an exemption to these limits as defined in the Annexes of Directive 2011/65/EU (RoHS2). Finished electrical and electronic equipment products will be CE marked as required by Directive 2011/65/EU. Components may not be CE marked. Additionally, the part numbers that TE has identified as EU ELV compliant have a maximum concentration of 0.1% by weight in homogenous materials for lead, hexavalent chromium, and mercury, and 0.01% for cadmium, or qualify for an exemption to these limits as defined in the Annexes of Directive 2000/53/EC (ELV). Regarding the REACH Regulation, the information TE provides on SVHC in articles for this part number is based on the latest European Chemicals Agency (ECHA) 'Guidance on requirements for substances in articles' posted at this URL: <https://echa.europa.eu/guidance-documents/guidance-on-reach>

Compatible Parts



TE Part # 6-2176330-1
CRGP 2010 1M0 1%

TE Part # 4-2176331-9
CRGP 2512 100K 1%

TE Part # 2176326-2
CRGP 0603 12R 1%

TE Part # 2-2176328-3
CRGP 1206 680R 1%

TE Part # 5-2176327-4
CRGP 0805 270K 1%

Also in the Series | [Neohm CRGP](#)

Surface Mount Resistors(420)

Customers Also Bought

TE Part #5-2176070-2
3521 1K3 1% 2W

TE Part #63698-1
FASTON .187 (4.75 MM) ADAPTER
TPBR

TE Part #1776260-2
2P Spring TB, 180deg, VT,5.08mm,
Green

TE Part #1623750-1
ER58 100R 5% AMMO

TE Part #1-2834015-6
6POS 2.54MM TES CONN.

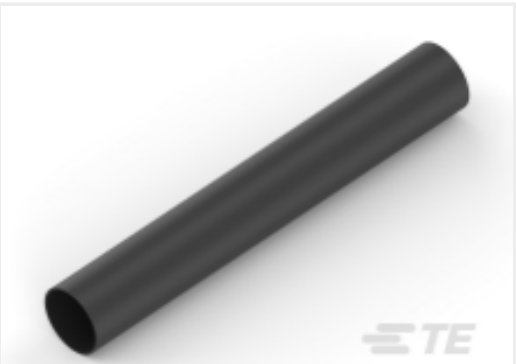
TE Part #2176326-3
CRGP 0603 15R 1%

TE Part #6-2176217-9
CPF A 0805 680K 0.1% 25PPM 1K RL

TE Part #5069774002
CGPT-38/19-X-SP



TE Part #5500102028
[SCL-1/8-0-STK](#)



TE Part #NB11784001
[ATUM-8/2-0-SP](#)

Documents

Product Drawings

[CRGP 2010 82R 1%](#)

English

CAD Files

[3D PDF](#)

3D

Customer View Model

[ENG_CVM_CVM_1-2176330-2_BA.2d_dxf.zip](#)

English

Customer View Model

[ENG_CVM_CVM_1-2176330-2_BA.3d_igs.zip](#)

English

Customer View Model

[ENG_CVM_CVM_1-2176330-2_BA.3d_stp.zip](#)

English

By downloading the CAD file I accept and agree to the [Terms and Conditions](#) of use.

Datasheets & Catalog Pages

[CRGP Data Sheet](#)

English