

100KEPS10BFPW

✓ ACTIVE

Corcom KEP

TE Internal #: 5-1609968-2

100 A 3-Phase Filter, Terminal Block Input, Terminal Block Output,
WYE (4 wire + ground), 520 VAC, Chassis Mount, Corcom KEP

[View on TE.com >](#)



EMI & EMC Solutions > EMI Filters > Power Line Filters > 3-Phase Filters



Current Rating: 100 A

Input Termination Type: Terminal Block

Output Termination Type: Terminal Block

Wiring Configuration: WYE (4 wire + ground)

Operating Voltage: 520 VAC

Features

Usage Conditions

Operating Temperature Range	-25 – 85 °C
-----------------------------	-------------

Product Type Features

Filtering Requirements	Filtered
Input Termination Type	Terminal Block
Output Termination Type	Terminal Block

Electrical Characteristics

Leakage Current (Max) (230VAC, 50Hz)	12
Current Rating	100 A
Operating Voltage	520 VAC

Configuration Features

Wiring Configuration	WYE (4 wire + ground)
----------------------	-----------------------

Mechanical Attachment

Product Mount Type	Chassis Mount
--------------------	---------------

Other



EU RoHS Compliance	Compliant with Exemptions
EU ELV Compliance	Not Compliant

Product Compliance

For compliance documentation, visit the product page on TE.com>

EU RoHS Directive 2011/65/EU	Compliant with Exemptions
EU ELV Directive 2000/53/EC	Not Compliant
China RoHS 2 Directive MIIT Order No 32, 2016	Restricted Materials Above Threshold
EU REACH Regulation (EC) No. 1907/2006	Current ECHA Candidate List: JUNE 2024 (241) Candidate List Declared Against: JUNE 2024 (241) SVHC > Threshold: Pb (3% in Component Part) Article Safe Usage Statements: Do not eat, drink or smoke when using this product. Wash thoroughly after handling. Recycle if possible and dispose of the article by following all applicable governmental regulations relevant to your geographic location.
Halogen Content	Not Low Halogen - contains Br or Cl > 900 ppm.
Solder Process Capability	Not reviewed for solder process capability

Product Compliance Disclaimer

This information is provided based on reasonable inquiry of our suppliers and represents our current actual knowledge based on the information they provided. This information is subject to change. The part numbers that TE has identified as EU RoHS compliant have a maximum concentration of 0.1% by weight in homogenous materials for lead, hexavalent chromium, mercury, PBB, PBDE, DBP, BBP, DEHP, DIBP, and 0.01% for cadmium, or qualify for an exemption to these limits as defined in the Annexes of Directive 2011/65/EU (RoHS2). Finished electrical and electronic equipment products will be CE marked as required by Directive 2011/65/EU. Components may not be CE marked. Additionally, the part numbers that TE has identified as EU ELV compliant have a maximum concentration of 0.1% by weight in homogenous materials for lead, hexavalent chromium, and mercury, and 0.01% for cadmium, or qualify for an exemption to these limits as defined in the Annexes of Directive 2000/53/EC (ELV). Regarding the REACH Regulation, the information TE provides on SVHC in articles for this part number is based on the latest European Chemicals Agency (ECHA) 'Guidance on requirements for substances in articles' posted at this URL: <https://echa.europa.eu/guidance-documents/guidance-on-reach>

Compatible Parts



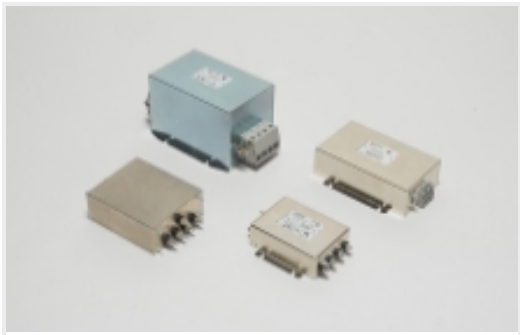
TE Part # 5-1609968-0
KEP 60A 1S HIGH PLUS SP WYE
520VAC



TE Part # 5-1609968-1
KEP 75A 1S HIGH PLUS SP WYE
520VAC

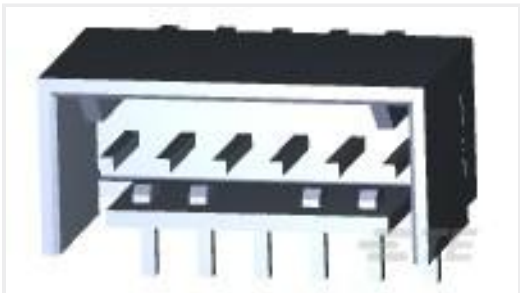


Also in the Series | Corcom KEP



3-Phase Filters(48)

Customers Also Bought



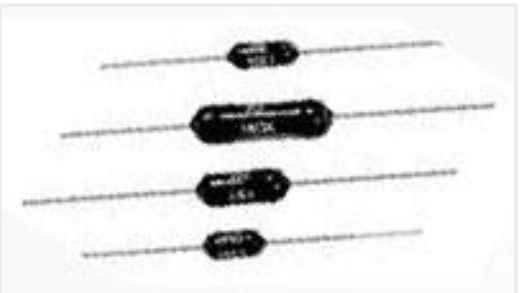
TE Part #2-644488-6
06P MTA100 SHRD HDR F/L R/A SN



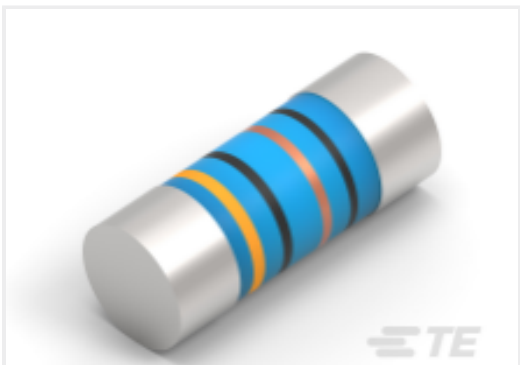
TE Part #535090-4
096 EURO TYPE C RECEPT ST ASSY



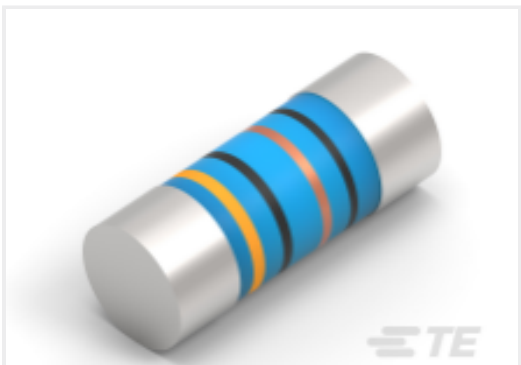
TE Part #7-1625890-0
2W SM M/OX 5% 82K



TE Part #5-1879666-4
H8 475K 0.1% 15PPM



TE Part #8-2176316-9
MELF SMA-A 120K 1% 50PPM 0207 1W



TE Part #7-2176316-2
MELF SMA_A 68K 1% 50PPM 0207 1W



TE Part #5-1437595-2
TRD11F10WL=SUB MINI ROCKER BLA



TE Part #6-1393252-1
W67-X2Q12-30=M6/M7/M9/W6/W7



TE Part #1-1393767-5
R10-E2X2-V700=R10



TE Part #1-1393766-9
R10-E1X4-24V=R10

Documents

Product Drawings

KEP 100A 1S HIGH PLUS SP WYE 520VAC

English

CAD Files

Customer View Model

ENG_CVM_CVM_5-1609968-2_B.2d_dxf.zip

100KEPS10BFPW

100 A 3-Phase Filter, Terminal Block Input, Terminal Block Output, WYE (4 wire + ground), 520 VAC, Chassis Mount, Corcom KEP



English

Customer View Model

[ENG_CVM_CVM_5-1609968-2_B.3d_stp.zip](#)

English

Customer View Model

[ENG_CVM_CVM_5-1609968-2_B.3d_igs.zip](#)

English

[3D PDF](#)

3D

By downloading the CAD file I accept and agree to the [Terms and Conditions](#) of use.

Datasheets & Catalog Pages

[KEP SERIES](#)

English