

HD10-9-1939PE-B022

✓ ACTIVE

DEUTSCH | DEUTSCH HD10, DEUTSCH HD

TE Internal #: HD10-9-1939PE-B022

9 Position Housing, Housing for Male Terminals, Wire-to-Wire, Sealable, Black, Wire & Cable, Power, Panel Mount, -55 – 125 °C [-67 – 257 °F], Hybrid

[View on TE.com >](#)



Connectors > Automotive Connectors > Automotive Housings > DEUTSCH HD10 Housings



Number of Positions: 9

Connector & Housing Type: **Housing for Male Terminals**

Mating Pin Diameter: 1.59 mm [.063 in]

Connector System: **Wire-to-Wire**

Sealable: **Yes**

[All DEUTSCH HD10 Housings \(53\)](#)

Features

Housing Features

Housing Material	PA GF
------------------	-------

Industry Standards

IP Rating	IP6K9K, IP68
UL Flammability Rating	20mm Flame Test per Standard UL-94

Dimensions

Compatible Insulation Diameter Range	1.35 – 3.05 mm[.053 – .12 in]
Product Width	44.45 mm[1.75 in]
Product Length	42.18 mm[1.66 in]
Connector Height	41.28 mm[1.625 in]

Packaging Features

Packaging Quantity	250
Packaging Method	Box

Mechanical Attachment

Strain Relief	Add By Accessory
Terminal Position Assurance	No
Mating Alignment Type	Polarizing Slot



Mating Alignment	With
Connector Mounting Type	Panel Mount

Other

Serviceable	Yes
Connector Position Assurance Capable	No
EU RoHS Compliance	Compliant
EU ELV Compliance	Compliant

Electrical Characteristics

Operating Voltage	250 VDC
Nominal Voltage Architecture	250 V

Body Features

Cable Exit Angle	180°
Primary Product Color	Black

Contact Features

Contact Size	Size 16
Contact Type	Pin
Mating Pin Diameter	1.59 mm[.063 in]
Contact Current Rating (Max)	13 A

Product Type Features

Mixed & Hybrid Connector	No
Connector Shape	Circular
Connector & Housing Type	Housing for Male Terminals
Connector System	Wire-to-Wire
Sealable	Yes
Primary Locking Feature	Integrated in Housing
Connector & Contact Terminates To	Wire & Cable

Configuration Features

Blank Cavity Position	0
Connector Seal Code	E Seal
Number of Positions	9

Usage Conditions

Operating Temperature (Max)	125 °C[257 °F]
-----------------------------	----------------



Operating Temperature Range

-55 – 125 °C[-67 – 257 °F]

Operation/Application

Circuit Application	Power
---------------------	-------

Product Compliance

For compliance documentation, visit the product page on TE.com>

EU RoHS Directive 2011/65/EU	Compliant
EU ELV Directive 2000/53/EC	Compliant
China RoHS 2 Directive MIIT Order No 32, 2016	No Restricted Materials Above Threshold
EU REACH Regulation (EC) No. 1907/2006	Current ECHA Candidate List: JUNE 2024 (241) Candidate List Declared Against: JUNE 2024 (241) SVHC > Threshold: Octamethylcyclotetrasiloxane (D4) (.5% in Component Part) Dodecamethylcyclohexasiloxane (D6) (.5% in Component Part) Decamethylcyclopentasiloxane (D5) (.5% in Component Part) Article Safe Usage Statements: Wash thoroughly after handling. Recycle if possible and dispose of the article by following all applicable governmental regulations relevant to your geographic location.
Halogen Content	Not Low Halogen - contains Br or Cl > 900 ppm.
Solder Process Capability	Not reviewed for solder process capability

Product Compliance Disclaimer

This information is provided based on reasonable inquiry of our suppliers and represents our current actual knowledge based on the information they provided. This information is subject to change. The part numbers that TE has identified as EU RoHS compliant have a maximum concentration of 0.1% by weight in homogenous materials for lead, hexavalent chromium, mercury, PBB, PBDE, DBP, BBP, DEHP, DIBP, and 0.01% for cadmium, or qualify for an exemption to these limits as defined in the Annexes of Directive 2011/65/EU (RoHS2). Finished electrical and electronic equipment products will be CE marked as required by Directive 2011/65/EU. Components may not be CE marked. Additionally, the part numbers that TE has identified as EU ELV compliant have a maximum concentration of 0.1% by weight in homogenous materials for lead, hexavalent chromium, and mercury, and 0.01% for cadmium, or qualify for an exemption to these limits as defined in the Annexes of Directive 2000/53/EC (ELV). Regarding the REACH Regulation, the information TE provides on SVHC in articles for this part number is based on the latest European Chemicals Agency (ECHA) ‘Guidance on requirements for substances in articles’ posted at this URL: <https://echa.europa.eu/guidance-documents/guidance-on-reach>

Compatible Parts



TE Part # HD10-9BT-BK
BOOT, 9P, PLG/REC, ST, BLK

TE Part # CAT-H3910-CH8172
DEUTSCH HD10 Housings

TE Part # CAT-D48-ST273
DEUTSCH Solid Contacts

TE Part # CAT-H3910-RC1748
Receptacle Dust Caps — DEUTSCH HD10

TE Part # CAT-J67-DSCC16
DEUTSCH Size 16 Crimp Contacts

TE Part # CAT-D48-SFT273
DEUTSCH Stamped and Formed Contacts

TE Part # HD10-9BT-BK-430
BOOT, 9P, PLG/REC, ST, BLK

TE Part # 0411-336-1605
EXT TOOL, SIZE 16, 16-20 AWG, E, DRK BLU

TE Part # HD10-9BT
BOOT, 9P, PLG/REC, ST, GRY

TE Part # CAT-D48-SP729
DEUTSCH Sealing Plugs

TE Part # 2300908-1
0460-003-16329, PIN, SOLID, 20-24AWG, AU

Also in the Series | **DEUTSCH HD**

Automotive Connector Caps & Covers
(17)

Automotive Housings(53)

Connector Strain Relief(5)

Other Automotive Connector
Accessories(12)

Also in the Series | **DEUTSCH HD10**



Automotive Connector Caps & Covers (17)



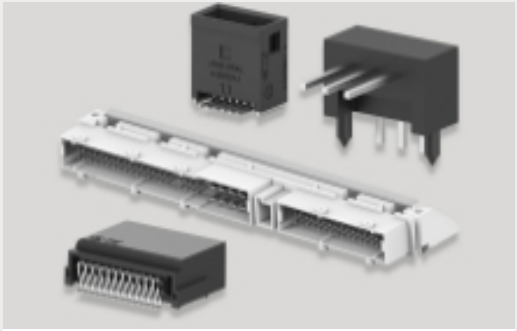
Automotive Headers(1)



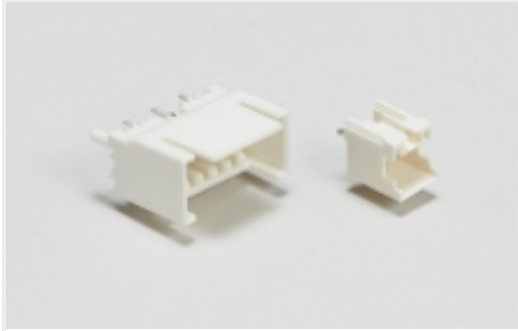
Automotive Housings(53)



Connector Backshells(17)



PCB Headers & Receptacles(1)

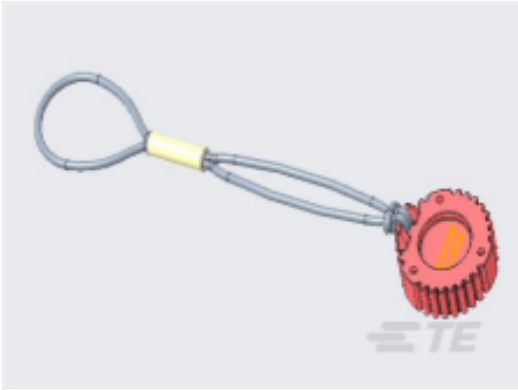


Wire-to-Board Headers & Receptacles (1)

Customers Also Bought



TE Part #HDC14-3
DUST CAP



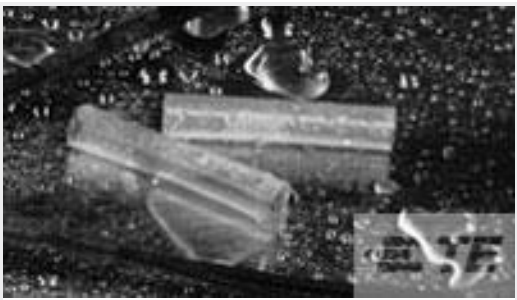
TE Part #HDC9-JDL082397
DUST CAP, 9P, REC, BLK, LANYARD, HD10



TE Part #HD10-9BT-BK
BOOT, 9P, PLG/REC, ST, BLK



TE Part #1-66358-8
III+ SKT,18-14,TIN ,STRIP



TE Part #035377P006
ES1000-NO.3-B8-X-50MM



TE Part #2414-002-1886
LOCKWASHER, SIZE 18, HDP



TE Part #3-1393292-8
V23074A1002A403-EV-CBOX



TE Part #524431-E
MCBP 5 F 2 035 137 * 197 1,27 TRAY VR2 J



TE Part #CAR3PC68
CAR PLUG DIN9680 3way, IP68

Documents



Product Drawings

REC, 9P, BLK, E, PANEL, J1939, TYPE 1

English

CAD Files

3D PDF

3D

Customer View Model

ENG_CVM_CVM_HD10-9-1939PE-B022_99_c-hd10-9-1939pe-b022-99.2d_dxf.zip

English

Customer View Model

ENG_CVM_CVM_HD10-9-1939PE-B022_99_c-hd10-9-1939pe-b022-99.3d_igs.zip

English

Customer View Model

ENG_CVM_CVM_HD10-9-1939PE-B022_99_c-hd10-9-1939pe-b022-99.3d_stp.zip

English

By downloading the CAD file I accept and agree to the [Terms and Conditions](#) of use.

Datasheets & Catalog Pages

DEUTSCH HD10 CONNECTOR SERIES

English

ICT Terminals and Connectors Catalogue

English

CONNECTOR SELECTOR

English

Product Specifications

Application Specification

English

Agency Approvals

UL Report

English