



Sensors > Temperature Sensors > NTC Thermistors Sensors & Probes > NTC Probes



NTC Probe Type: HVAC/R

Electrical Connection: Open End

Resistance (at 25°C): 10 kΩ

β-Value(25/85): 3435 K

Accuracy (at T_ref): ± .22 @ 25 °C

Features

Mechanical Attachment

Wire Length	1000 mm[39 in]
-------------	----------------

Usage Conditions

T_ref for Resistance	25 °C[77 °F]
Operating Temperature Range	-40 – 125 °C[-40 – 257 °F]
Resistance (at 25°C)	10 kΩ
Accuracy (at T_ref)	± .22 @ 25 °C
Tolerance Resistance	± 1 %

Product Type Features

Wire/Cladding Type	24 AWG Stranded Insulated Leads
NTC Probe Type	HVAC/R
Sensor Package	Overmold TPE

Configuration Features

Electrical Connection	Open End
-----------------------	----------

Electrical Characteristics

β-Value(25/85)	3435 K
----------------	--------

Other

EU RoHS Compliance	Compliant with Exemptions
EU ELV Compliance	Compliant with Exemptions



Product Compliance

For compliance documentation, visit the product page on TE.com>

EU RoHS Directive 2011/65/EU	Compliant with Exemptions
EU ELV Directive 2000/53/EC	Compliant with Exemptions
China RoHS 2 Directive MIIT Order No 32, 2016	Restricted Materials Above Threshold
EU REACH Regulation (EC) No. 1907/2006	Current ECHA Candidate List: JUNE 2024 (241) Candidate List Declared Against: JUNE 2024 (241) SVHC > Threshold: Pb (20% in Component Part) Article Safe Usage Statements: Do not eat, drink or smoke when using this product. Wash thoroughly after handling. Recycle if possible and dispose of the article by following all applicable governmental regulations relevant to your geographic location.
Halogen Content	Low Halogen - Br, Cl, F, I < 900 ppm per homogenous material. Also BFR/CFR/PVC Free
Solder Process Capability	Not reviewed for solder process capability

Product Compliance Disclaimer

This information is provided based on reasonable inquiry of our suppliers and represents our current actual knowledge based on the information they provided. This information is subject to change. The part numbers that TE has identified as EU RoHS compliant have a maximum concentration of 0.1% by weight in homogenous materials for lead, hexavalent chromium, mercury, PBB, PBDE, DBP, BBP, DEHP, DIBP, and 0.01% for cadmium, or qualify for an exemption to these limits as defined in the Annexes of Directive 2011/65/EU (RoHS2). Finished electrical and electronic equipment products will be CE marked as required by Directive 2011/65/EU. Components may not be CE marked. Additionally, the part numbers that TE has identified as EU ELV compliant have a maximum concentration of 0.1% by weight in homogenous materials for lead, hexavalent chromium, and mercury, and 0.01% for cadmium, or qualify for an exemption to these limits as defined in the Annexes of Directive 2000/53/EC (ELV). Regarding the REACH Regulation, the information TE provides on SVHC in articles for this part number is based on the latest European Chemicals Agency (ECHA) ‘Guidance on requirements for substances in articles’ posted at this URL: <https://echa.europa.eu/guidance-documents/guidance-on-reach>

Compatible Parts

TE Part # 11016706-00
PRO2-G3.3M8D4 (8K+/- 5%)

TE Part # GA10K3D732
PRO2- FSR20301061

Customers Also Bought



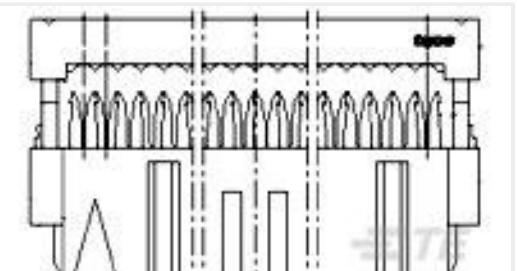
TE Part #4-640427-0
10P MTA156 CONN ASSY 20AWG YEL



TE Part #3-640600-2
02P MTA156 CONN ASSY 20AWG LF



TE Part #280755-2
FF 375 REC 6-10MM2 TPBR



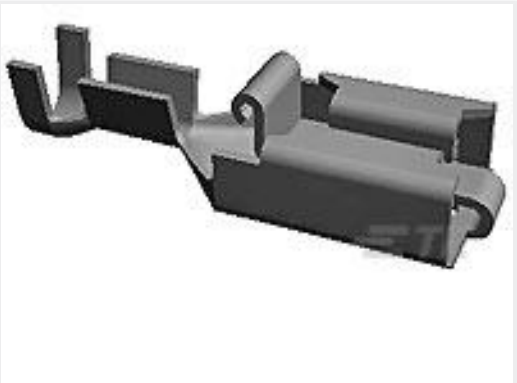
TE Part #2-215911-0
20 WAY GREY MK II RECP



TE Part #3-967325-3
2,5MM BU-GEH 2P,GN



TE Part #2-1415899-2
RZ03-1C4-D012



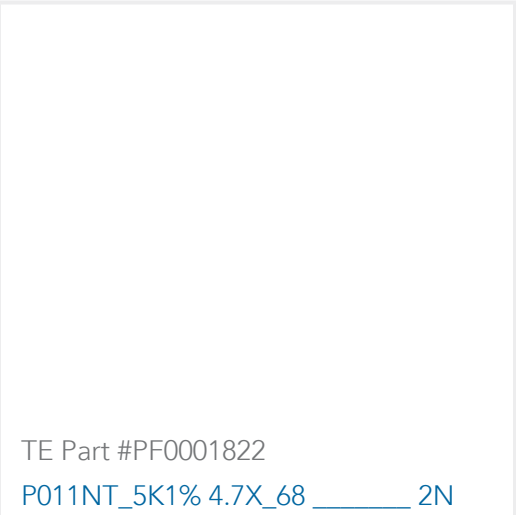
TE Part #341001-3
PL 250 REC TERMINAL 13-11 TPBR LP



TE Part #1-480435-0
FASTON 187 REC HSG NYLON NAT



TE Part #292254-4
CT RELAY HDR ASSY 4P NAT



TE Part #PF0001822
P011NT_5K1% 4.7X_68 2N

Documents

CAD Files

3D PDF

3D

Customer View Model

ENG_CVM_CVM_GA10K3435DM010_4.2d_dxf.zip

English

Customer View Model

ENG_CVM_CVM_GA10K3435DM010_4.3d_igs.zip

English

Customer View Model

ENG_CVM_CVM_GA10K3435DM010_4.3d_stp.zip

English

By downloading the CAD file I accept and agree to the [Terms and Conditions](#) of use.

Datasheets & Catalog Pages

TPE OM NTC Probe 5x20mm

English