

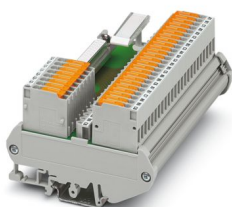
# FLKM-D25 SUB/B/KDS3-MT/TU810 - Termination board



2304513

<https://www.phoenixcontact.com/us/products/2304513>

Please be informed that the data shown in this PDF document is generated from our online catalog. Please find the complete data in the user documentation. Our general terms of use for downloads are valid.



VARIOFACE module for ABB S800 I/O, with knife disconnect terminal blocks and specific marking (A1, B1, C1, A2, B2, C2, ... A8, B8, C8)

## Your advantages

- Eight negative terminal blocks with knife disconnection (TU810)
- Eight positive terminal blocks with knife disconnection (TU810/P)
- One positive and negative terminal block with knife disconnection per channel (TU830)

## Commercial data

Item number	2304513
Packing unit	1 pc
Minimum order quantity	1 pc
Note	Made to order (non-returnable)
Sales key	C421
Product key	CK218L
Catalog page	Page 468 (C-5-2019)
GTIN	4017918949006
Weight per piece (including packing)	329.6 g
Weight per piece (excluding packing)	329.3 g
Customs tariff number	85369010
Country of origin	DE

# FLKM-D25 SUB/B/KDS3-MT/TU810 - Termination board



2304513

<https://www.phoenixcontact.com/us/products/2304513>

## Technical data

### Product properties

Product type	Interface module
Number of positions	25
No. of channels	2
	4
	8
	16

### Insulation characteristics: Air clearances and creepage distances

Insulation	Functional insulation
Overvoltage category	II
Pollution degree	2

### Electrical properties

Operating voltage (AC)	$\leq 30$ V AC
Operating voltage (DC)	$\leq 60$ V DC
Current (per branch)	$\leq 2$ A
Current (L1-, L2-)	$\leq 8$ A
Current (L1+, L2+)	$\leq 4$ A
Current (Pin 1, 14, 2, 15, 11, 24, 12, 25)	$\leq 4$ A

### Air clearances and creepage distances

Rated insulation voltage	63 V
Rated surge voltage	0.6 kV (1.2/50 $\mu$ s)

### Supported controller ABB S800 I/O

Suitable I/O card	DI814
	DO810
	DO840
	DP820
	DP840
	AI810
	AI815
	AI820
	AI830
	AI835
	AI845
	AO810
	AO815
	AO820
	AO845

## Connection data

# FLKM-D25 SUB/B/KDS3-MT/TU810 - Termination board



2304513

<https://www.phoenixcontact.com/us/products/2304513>

## Connection 1 (control level)

Connection in acc. with standard	IEC 60807-2
Connection method	D-SUB socket strip
Screw thread	UNC 4-40
Number of connections	1
Number of positions	25
Insertion/withdrawal cycles	> 500
Pitch	2.77 mm

## Connection 2 (field level)

Connection method	Screw connection with disconnect knife
Stripping length	8 mm
Screw thread	M3
Number of positions	32
Conductor cross section rigid	0.2 mm <sup>2</sup> ... 4 mm <sup>2</sup>
Conductor cross-section rigid (2 conductors with same cross section)	0.2 mm <sup>2</sup> ... 1 mm <sup>2</sup>
Conductor cross section flexible	0.2 mm <sup>2</sup> ... 4 mm <sup>2</sup>
	0.25 mm <sup>2</sup> ... 2.5 mm <sup>2</sup> (Ferrule without plastic sleeve)
	0.25 mm <sup>2</sup> ... 1.5 mm <sup>2</sup> (Ferrule with plastic sleeve)
Conductor cross section flexible (2 conductors with same cross section)	0.2 mm <sup>2</sup> ... 1 mm <sup>2</sup>
	0.25 mm <sup>2</sup> ... 0.75 mm <sup>2</sup> (Ferrule without plastic sleeve)
	0.5 mm <sup>2</sup> ... 1 mm <sup>2</sup> (TWIN ferrule with plastic sleeve)
Conductor cross section AWG	24 ... 12
Tightening torque	0.5 Nm ... 0.6 Nm
Pitch	5.08 mm

## Connection 3 (field level)

Connection method	Test socket
Number of positions	24

## Signaling

Status display	no
Status display present	No

## Dimensions

### Item dimensions

Width	126 mm
Height	89.6 mm
Depth	59 mm

## Material specifications

Color	gray (RAL 7042)
Housing insulation material	PVC

# FLKM-D25 SUB/B/KDS3-MT/TU810 - Termination board



2304513

<https://www.phoenixcontact.com/us/products/2304513>

## Environmental and real-life conditions

### Ambient conditions

Degree of protection (Module)	IP00
Degree of protection (Installation location)	≥ IP54
Ambient temperature (operation)	-20 °C ... 50 °C
Ambient temperature (storage/transport)	-20 °C ... 70 °C
Altitude	≤ 2000 m

## Approvals

### UKCA

Certificate	UKCA-compliant
-------------	----------------

## Standards and regulations

### Air clearances and creepage distances

Standards/regulations	EN IEC 60664-1
-----------------------	----------------

## Mounting

Mounting type	DIN rail mounting
Mounting position	any

## Notes

Notes on operation	For proper use, the specifications of the installation directive (see Downloads) must be observed. For applications or use with third-party products, the specifications, and the safety and warning instructions of the respective third-party manufacturer must also be met.
--------------------	--

# FLKM-D25 SUB/B/KDS3-MT/TU810 - Termination board

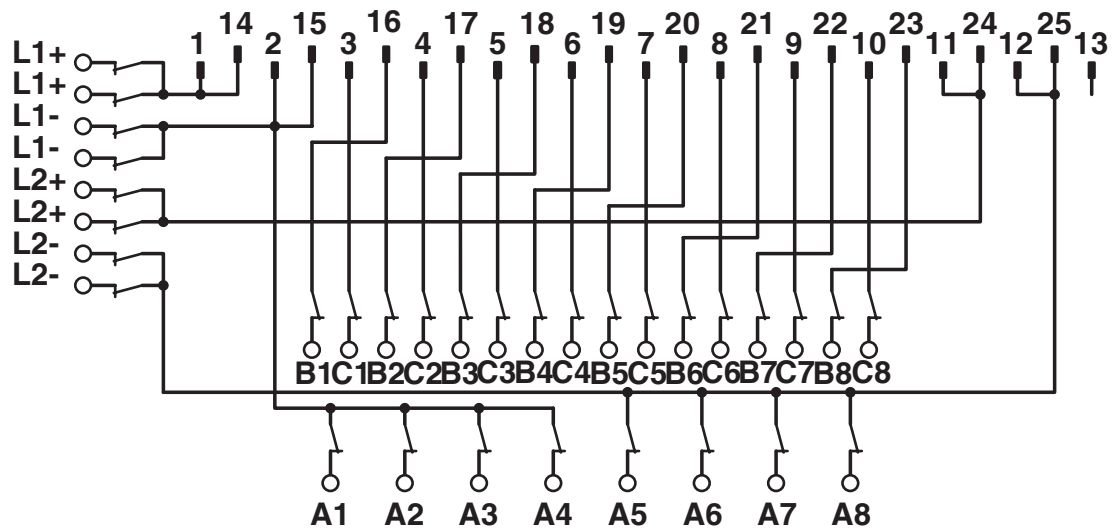


2304513

<https://www.phoenixcontact.com/us/products/2304513>

## Drawings

Circuit diagram



FLKM-D25 SUB/B/KDS3-MT/TU810 connection scheme

# FLKM-D25 SUB/B/KDS3-MT/TU810 - Termination board



2304513

<https://www.phoenixcontact.com/us/products/2304513>

## Classifications

### ECLASS

ECLASS-11.0	27141152
ECLASS-12.0	27141152
ECLASS-13.0	27141152

### ETIM

ETIM 9.0	EC002780
----------	----------

### UNSPSC

UNSPSC 21.0	39121400
-------------	----------

# FLKM-D25 SUB/B/KDS3-MT/TU810 - Termination board



2304513

<https://www.phoenixcontact.com/us/products/2304513>

## Environmental product compliance

### EU RoHS

Fulfills EU RoHS substance requirements	Yes
Exemption	6(c)

### China RoHS

Environment friendly use period (EFUP)	EFUP-50
	An article-related China RoHS declaration table can be found in the download area for the respective article under "Manufacturer declaration". For all articles with EFUP-E, no China RoHS declaration table issued and required.

### EU REACH SVHC

REACH candidate substance (CAS No.)	Lead(CAS: 7439-92-1)
SCIP	2e371cee-7e07-44ac-bf5e-5a26882b80d2

Phoenix Contact 2025 © - all rights reserved

<https://www.phoenixcontact.com>

Phoenix Contact USA  
586 Fulling Mill Road  
Middletown, PA 17057, United States  
(+717) 944-1300  
[info@phoenixcon.com](mailto:info@phoenixcon.com)