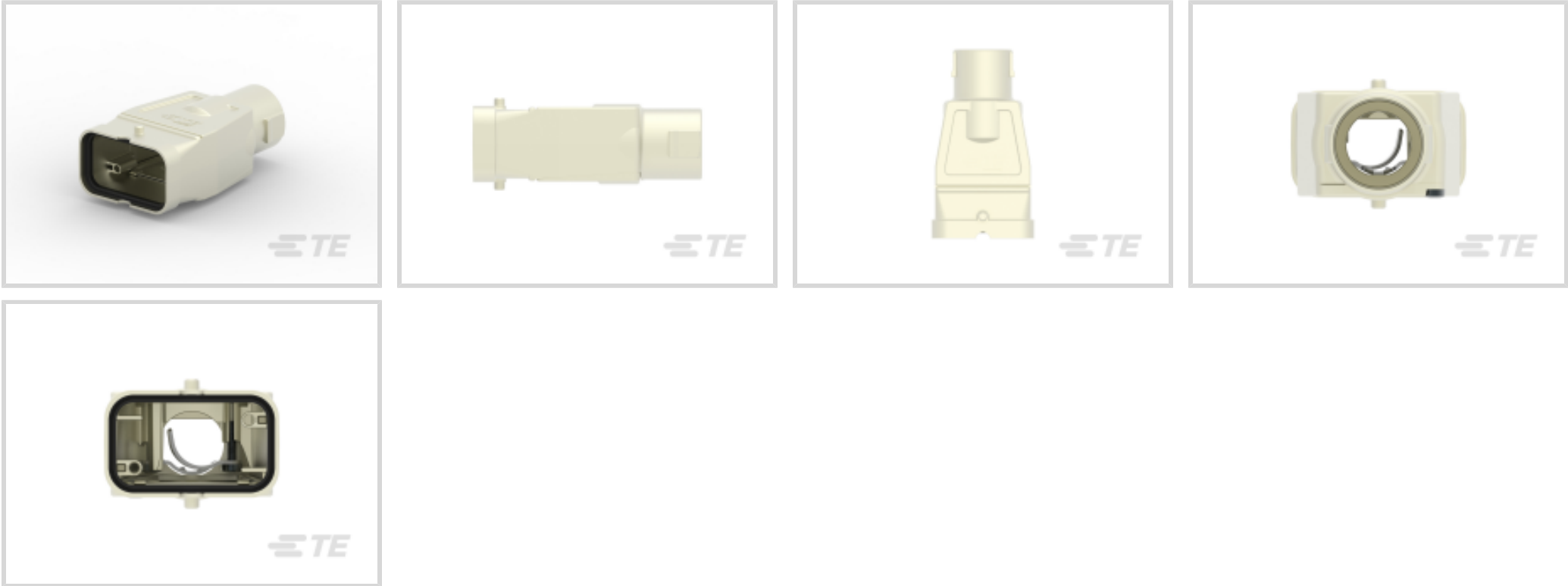




Connectors > Rectangular Connectors > Rectangular Connector Hoods & Bases



Hood & Base Connector Product Type: **Hood**

Cable Entry Location: **Top**

Hood & Base Locking Device Type: **Side Clip**

Sealable: **Yes**

EU RoHS Compliance: **Compliant**

Features

Packaging Features

Packaging Method	Box
Packaging Quantity	1

Body Features

Primary Product Color	Black
Cable Entry Location	Top

Product Type Features

Hood & Base Connector Product Type	Hood
Sealable	Yes

Mechanical Attachment

Hood & Base Locking Device Type	Side Clip
---------------------------------	-----------

Other

EU RoHS Compliance	Compliant
EU ELV Compliance	Compliant



Product Compliance

For compliance documentation, visit the product page on TE.com>

EU RoHS Directive 2011/65/EU	Compliant
EU ELV Directive 2000/53/EC	Compliant
China RoHS 2 Directive MIIT Order No 32, 2016	No Restricted Materials Above Threshold
EU REACH Regulation (EC) No. 1907/2006	Current ECHA Candidate List: JUNE 2024 (241) Candidate List Declared Against: JUNE 2022 (224) Does not contain REACH SVHC
Halogen Content	BFR/CFR/PVC Free, but Br/Cl >900 ppm in other sources.
Solder Process Capability	Not applicable for solder process capability

Product Compliance Disclaimer

This information is provided based on reasonable inquiry of our suppliers and represents our current actual knowledge based on the information they provided. This information is subject to change. The part numbers that TE has identified as EU RoHS compliant have a maximum concentration of 0.1% by weight in homogenous materials for lead, hexavalent chromium, mercury, PBB, PBDE, DBP, BBP, DEHP, DIBP, and 0.01% for cadmium, or qualify for an exemption to these limits as defined in the Annexes of Directive 2011/65/EU (RoHS2). Finished electrical and electronic equipment products will be CE marked as required by Directive 2011/65/EU. Components may not be CE marked. Additionally, the part numbers that TE has identified as EU ELV compliant have a maximum concentration of 0.1% by weight in homogenous materials for lead, hexavalent chromium, and mercury, and 0.01% for cadmium, or qualify for an exemption to these limits as defined in the Annexes of Directive 2000/53/EC (ELV). Regarding the REACH Regulation, the information TE provides on SVHC in articles for this part number is based on the latest European Chemicals Agency (ECHA) 'Guidance on requirements for substances in articles' posted at this URL: <https://echa.europa.eu/guidance-documents/guidance-on-reach>

Compatible Parts



TE Part # 2120336-1
PROTECTION COVER



TE Part # 2120339-1
SIDE CLIP



TE Part # 2120320-1
FEMALE INSERT WITH PE-CONTACT

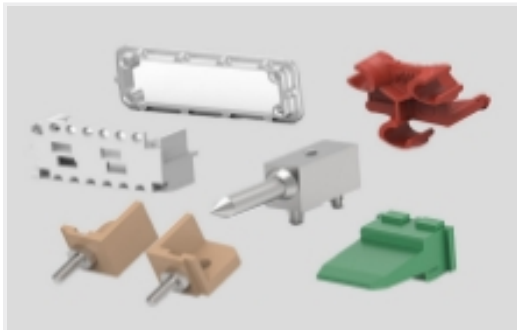
Also in the Series | MotorMan



Circular Connector Contact Inserts(2)



Connector Caps & Covers(2)



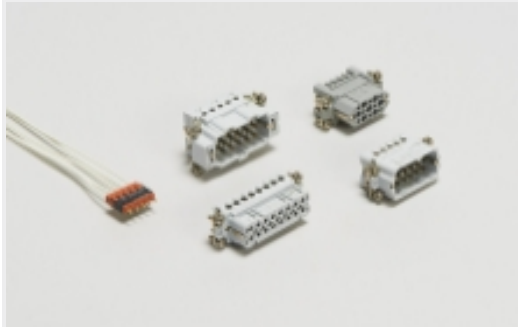
Connector Hardware(4)



Connector Strain Relief(2)



Rectangular Connector Hoods & Bases (4)



Rectangular Contact Inserts(5)

Customers Also Bought



TE Part #DT04-2P
REC, 2P, GRY, N



TE Part #DT06-2S
PLG, 2P, GRY, N



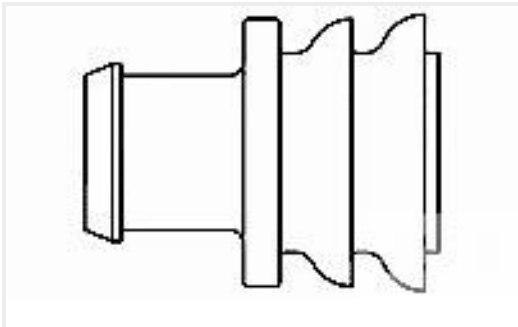
TE Part #CAT-D487-W416
Wedgelocks: DEUTSCH DT



TE Part #CAT-D48-ST273
DEUTSCH Solid Contacts



TE Part #CAT-AM71-CH8172
AMP SUPERSEAL 1.5MM,
CONNECTOR HOUSING



TE Part #281934-2
SINGLE WIRE SEAL

Documents

Product Drawings
HOOD KIT MOTORMAN HC 180 METAL
English

CAD Files
3D PDF
3D
Customer View Model
ENG_CVM_CVM_2120457-1_A.2d_dxf.zip



English

Customer View Model

[ENG_CVM_CVM_2120457-1_A.3d_igs.zip](#)

English

Customer View Model

[ENG_CVM_CVM_2120457-1_A.3d_stp.zip](#)

English

By downloading the CAD file I accept and agree to the [Terms and Conditions](#) of use.

Product Specifications

[Product Specification](#)

English