



Terminals & Splices > Ring Terminals



Ring Terminal Product Type: Closed Ring Tongue Terminal

Wire Size: 2050 – 5180 CMA

Stud Size: M5

Features

Configuration Features

Number of Holes	1
-----------------	---

Mechanical Attachment

Wire Insulation Support	Without
-------------------------	---------

Industry Standards

Government Qualified Terminal	No
-------------------------------	----

Packaging Features

Packaging Quantity	500
Packaging Method	Box

Product Type Features

Terminal Features	Heavy Duty
Ring Terminal Product Type	Closed Ring Tongue Terminal
Stud Size	M5
Sealable	No
Wire Insulation Support Retention Type	Insulation Support

Contact Features



Barrel Type	Closed
Terminal Orientation	Straight
Terminal Plating Material	Tin

Dimensions

Wire Size	2050 – 5180 CMA
Stud Diameter	5.26 mm[.207 in]
Tongue Thickness	.79 mm[.031 in]
Product Length	26.49 mm[1.043 in]
Compatible Insulation Diameter (Max)	6.4 mm[.252 in]
Compatible Insulation Diameter Range	3.8 – 6.4 mm[.15 – .252 in]

Usage Conditions

Insulation Option	Partially Insulated
-------------------	---------------------

Operation/Application

Compatible With Wire Base Material	Copper
Compatible With Wire Plating Material	Tin

Other

EU RoHS Compliance	Compliant
EU ELV Compliance	Compliant

Product Compliance

For compliance documentation, visit the product page on TE.com>

EU RoHS Directive 2011/65/EU	Compliant
EU ELV Directive 2000/53/EC	Compliant
China RoHS 2 Directive MIIT Order No 32, 2016	No Restricted Materials Above Threshold
EU REACH Regulation (EC) No. 1907/2006	Current ECHA Candidate List: JUNE 2024 (241) Candidate List Declared Against: JUNE 2024 (241) Does not contain REACH SVHC
Halogen Content	Low Halogen - Br, Cl, F, I < 900 ppm per homogenous material. Also BFR/CFR/PVC Free
Solder Process Capability	Not applicable for solder process capability

Product Compliance Disclaimer

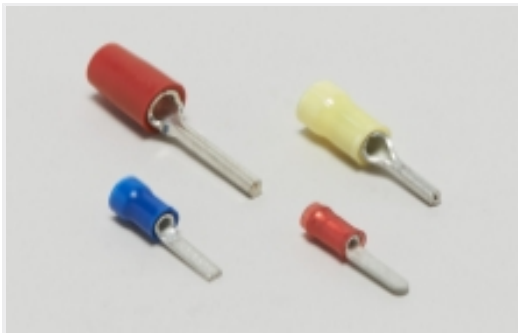


This information is provided based on reasonable inquiry of our suppliers and represents our current actual knowledge based on the information they provided. This information is subject to change. The part numbers that TE has identified as EU RoHS compliant have a maximum concentration of 0.1% by weight in homogenous materials for lead, hexavalent chromium, mercury, PBB, PBDE, DBP, BBP, DEHP, DIBP, and 0.01% for cadmium, or qualify for an exemption to these limits as defined in the Annexes of Directive 2011/65/EU (RoHS2). Finished electrical and electronic equipment products will be CE marked as required by Directive 2011/65/EU. Components may not be CE marked. Additionally, the part numbers that TE has identified as EU ELV compliant have a maximum concentration of 0.1% by weight in homogenous materials for lead, hexavalent chromium, and mercury, and 0.01% for cadmium, or qualify for an exemption to these limits as defined in the Annexes of Directive 2000/53/EC (ELV). Regarding the REACH Regulation, the information TE provides on SVHC in articles for this part number is based on the latest European Chemicals Agency (ECHA) ‘Guidance on requirements for substances in articles’ posted at this URL: <https://echa.europa.eu/guidance-documents/guidance-on-reach>

Also in the Series | **PLASTI-GRIP**



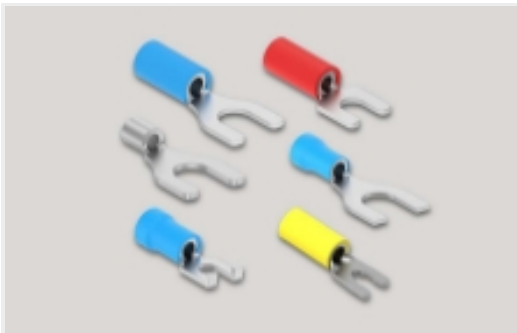
Compression Connectors(3)



Crimp Wire Pins, Tabs & Ferrules(20)



Ring Terminals(310)

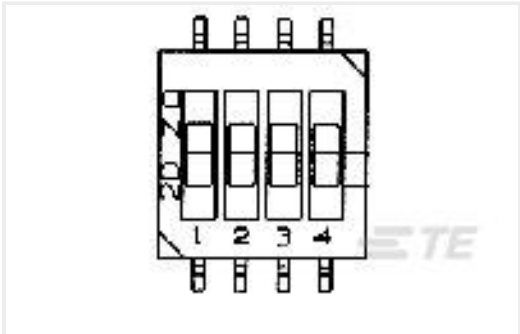


Spade Terminals(159)



Splices(45)

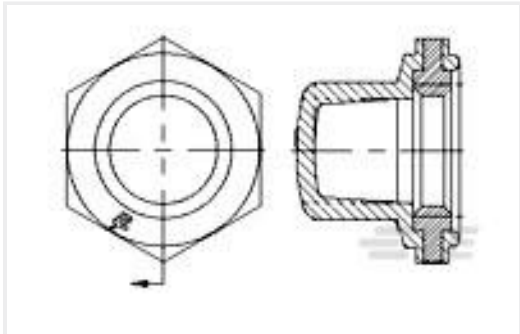
Customers Also Bought



TE Part #1825140-2
MGDH04STR04=1/2 PITCH LOW P
DIP T&R



TE Part #1-87756-8
MOD IV RECP LP



TE Part #1825604-1
BPA1440004=Boot,Pushbutton



TE Part #1-1437559-8
MTG206N=SWITCH TOG MUSTANG



TE Part #2314868-2
2P,2MM,BB,REC,SRVT,2.0,0.1AU,TUBE
W/CAP

TE Part #ANT-DB1-WRT-RPS
Antenna Dome WiFi6 2.4/5.8GHz
RG174 RPS

TE Part #1-2176325-9
CRGP 0402 330R 1%

TE Part #1825100-1
TPF11CGPC004

TE Part #8-1437627-2
G12B=BUTTON GUARD BLACK

TE Part #ARR-NF-NM-B
Arrestor Blkhd N Jack to N Plug

Documents

Product Drawings
P.G RING UL.CSA(16-14HD)

English

CAD Files
3D PDF

3D

Customer View Model
ENG_CVM_CVM_170647-2_B.2d_dxf.zip

English

Customer View Model
ENG_CVM_CVM_170647-2_B.3d_igs.zip

English

Customer View Model
ENG_CVM_CVM_170647-2_B.3d_stp.zip

English

By downloading the CAD file I accept and agree to the [Terms and Conditions](#) of use.

Product Specifications
Application Specification

English

Agency Approvals
CSA Certificate

English