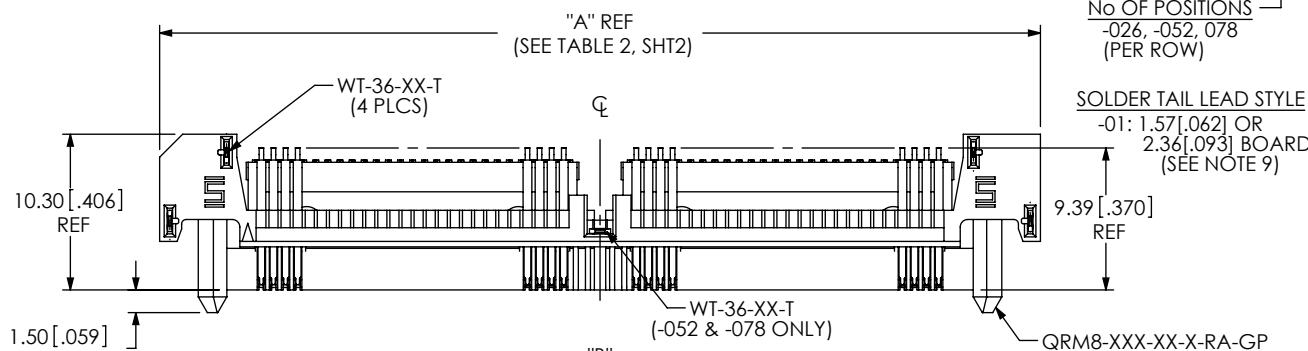


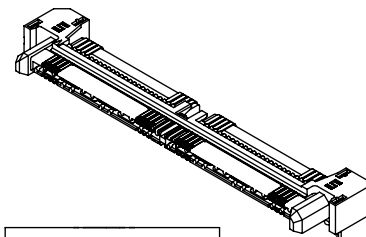
DESIGNED & DIMENSIONED
IN MILLIMETERS[INCHES]

QRM8-XXX-XX-X-RA-GP-XX

DO NOT
SCALE FROM
THIS PRINT



- OPTION
-K: POLYIMIDE FILM
(NOT AVAILABLE FOR
-026 & -078)
(USE K-DOT-276-.375-.005,
SEE FIG. 2, SHT 4)
-TR: TAPE & REEL
(SEE NOTE 8)
- GUIDE POSTS
-GP
- RIGHT ANGLE
-RA
- PLATING SPECIFICATION
-S: 30μ" SELECTIVE GOLD IN CONTACT AREA
MATTE TIN ON TAIL
(USE T-1M52-XX-S & IM-T-1G35-XX-S)
-L: 10μ" SELECTIVE GOLD IN CONTACT AREA
MATTE TIN ON TAIL
(USE T-1M52-XX-L & IM-T-1G35-XX-L)



LEAD STYLE	"OVER MOLDED GROUND PLANE"	"WELD TAB"
-01	IM-T-1G35-01-X	WT-36-01-T

NOTES:

1. Ⓢ REPRESENTS A CRITICAL DIMENSION.
2. BURR ALLOWANCE: 0.038[.0015] MAX.
3. MINIMUM PUSHOUT FORCE: SIGNAL: 2.22N[.5 LB].
GROUND PLANE: 4.45N[1 LB].
4. MEASURE AT BEND TANGENCY.
5. MEASURE ON PINS ONLY, STANDOFFS NOT INCLUDED
IN MEASUREMENT.
6. POST HEIGHT VARIATION BETWEEN ANY TWO PINS: 0.05[.002] MAXIMUM.
7. NOTE DELETED
8. PARTS TO BE PACKAGED IN TRAYS, UNLESS -TR OPTION IS SPECIFIED.
-078 POSITION IS NOT AVAILABLE IN TAPE AND REEL.
9. THE -01 SOLDER TAIL LEAD STYLE CAN BE USED FOR A 1.57[.062] OR A 2.36[.093]
THICK PCB AND WILL ADHERE TO IPC-A-610 HOLE FILL STANDARDS IF SAMTEC'S
RECOMMENDED STENCIL APERTURE IS UTILIZED.
10. DIMENSIONS MUST BE MEASURED BOTH ENDS OF COMB OR CONNECTOR.
11. NOTE DELETED.
12. NOTE DELETED.
13. USE INSPECTION FIXTURE # AT-2321-801-XX TO CHECK THIS DIMENSION.
14. THIS SURFACE MUST BE PARALLEL TO WITHIN 1.5° OF -F-.
15. SHEAR BURR ALLOWANCE: .015 [.006] MAX ON THIS EDGE.

FIG 1
(QRM8-052-01-X-RA-GP SHOWN)
(SOME DETAIL REMOVED FOR CLARITY)

F:\DWG\MISC\WKTG\QRM8-XXX-XX-X-RA-GP-XX-MKT.SLDRW

UNLESS OTHERWISE SPECIFIED, DIMENSIONS ARE IN MILLIMETERS [INCHES]. TOLERANCES ARE:	
DECIMALS	ANGLES
X.X: ±0.3 [.01]	2°
X.XX: ±0.13 [.005]	
X.XXX: ±0.050 [.0020]	
MATERIAL: DO NOT SCALE DRAWING	
INSULATORS: LCP UL94V-0; COLOR: BLACK	
CONTACT: PHOS BRONZE	
GROUND PLANE: PHOS BRONZE	

PROPRIETARY NOTE

THIS DOCUMENT CONTAINS INFORMATION
CONFIDENTIAL AND PROPRIETARY TO
SAMTEC, INC. AND SHALL NOT BE REPRODUCED
OR TRANSFERRED TO OTHER DOCUMENTS OR
DISCLOSED TO OTHERS OR USED FOR ANY
PURPOSE OTHER THAN THAT WHICH IT WAS
OBTAINED WITHOUT THE EXPRESSED WRITTEN
CONSENT OF SAMTEC, INC.

samtec

520 PARK EAST BLVD, NEW ALBANY, IN 47150
PHONE: 812-944-6733 FAX: 812-948-5047
e-Mail: info@SAMTEC.com code 55322

DESCRIPTION: 0.8mm Q-RATE RIGHT ANGLE TERMINAL ASSEMBLY	
DWG. NO. QRM8-XXX-XX-X-RA-GP-XX	
BY: R MUSSER 10/02/2008	SHEET 1 OF 6

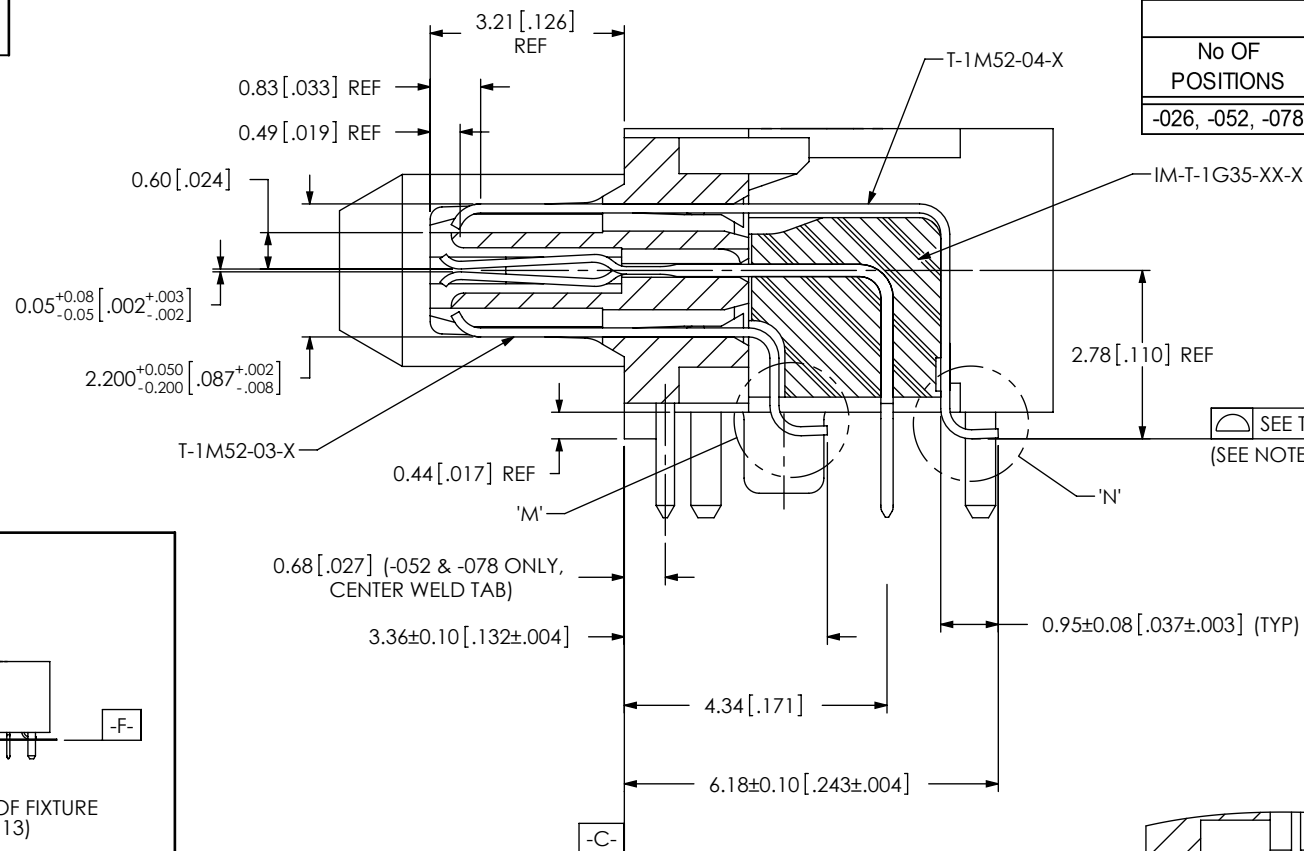
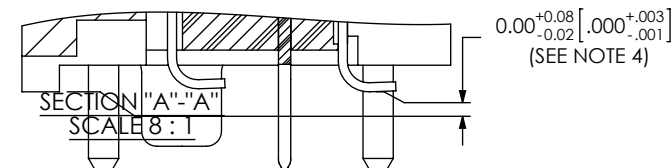
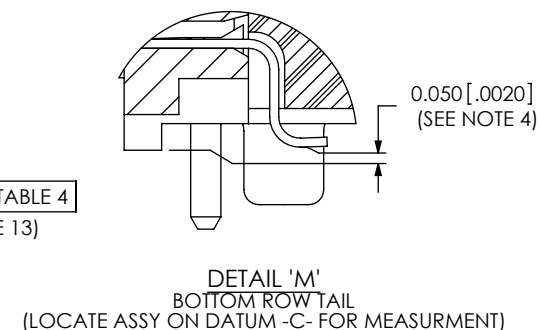
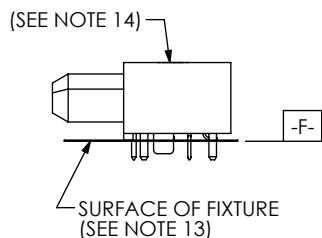


TABLE 4			
No OF POSITIONS	BOTTOM ROW STRAIGHTNESS	TOP ROW STRAIGHTNESS	COPLANARITY
-026, -052, -078	0.10 [0.004]	0.10 [0.004]	0.15 [0.006]



DETAIL 'N'
TOP ROW TAIL
(LOCATE ASSY ON DATUM -C- FOR MEASUREMENT)



INSPECTION VIEW 3

TABLE 2						
No OF POSITIONS	"A"	"B"	"C"	"D"	"E"	"F"
-026	33.46 [1.317]	20.00 [0.787]	28.35 [1.116]	25.80 [1.016]	32.11 [1.264]	24.61 [0.969]
-052	58.26 [2.294]	44.80 [1.764]	53.15 [2.093]	50.60 [1.992]	56.91 [2.240]	49.41 [1.945]
-078	83.06 [3.270]	69.60 [2.740]	77.95 [3.069]	75.40 [2.969]	81.71 [3.217]	74.21 [2.921]

PROPRIETARY NOTE

THIS DOCUMENT CONTAINS INFORMATION CONFIDENTIAL AND PROPRIETARY TO SAMTEC, INC. AND SHALL NOT BE REPRODUCED OR TRANSFERRED TO OTHER DOCUMENTS OR DISCLOSED TO OTHERS OR USED FOR ANY PURPOSE OTHER THAN THAT WHICH IT WAS OBTAINED WITHOUT THE EXPRESSED WRITTEN CONSENT OF SAMTEC, INC.

DO NOT SCALE DRAWING

SHEET SCALE: 2:1

samtec

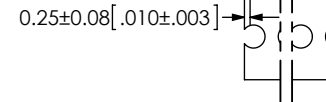
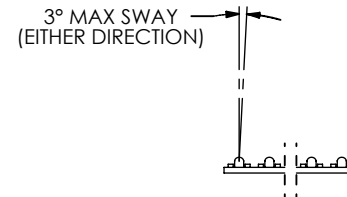
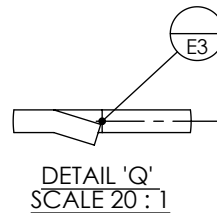
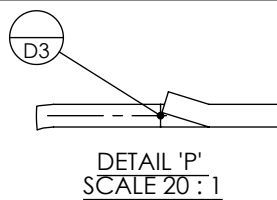
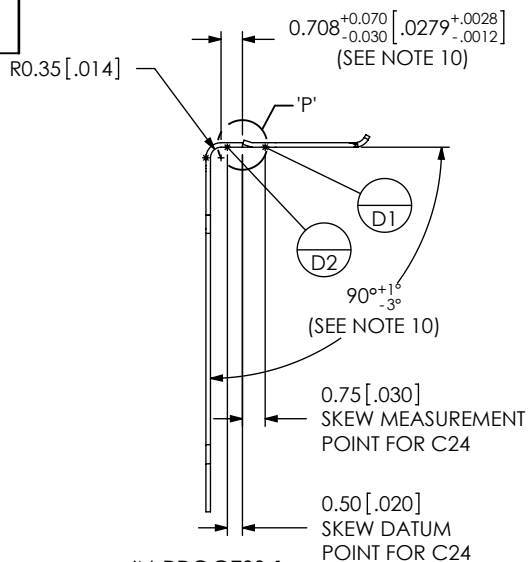
520 PARK EAST BLVD, NEW ALBANY, IN 47150
PHONE: 812-944-6733 FAX: 812-948-5047
e-Mail: info@SAMTEC.com code 55322

DESCRIPTION:
0.8mm Q-RATE RIGHT ANGLE TERMINAL ASSEMBLY

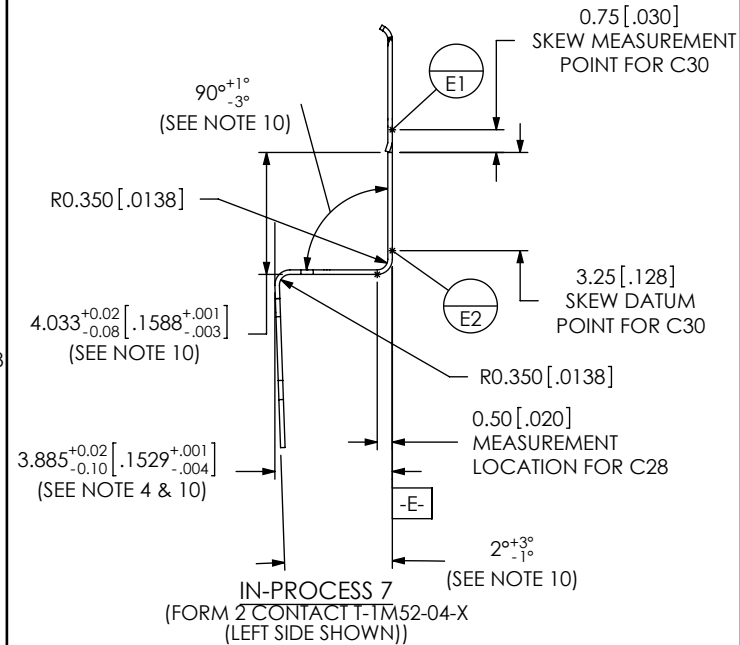
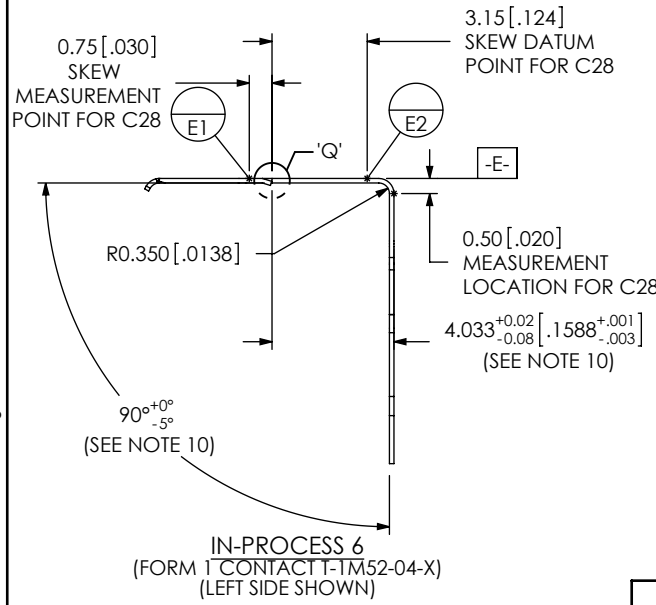
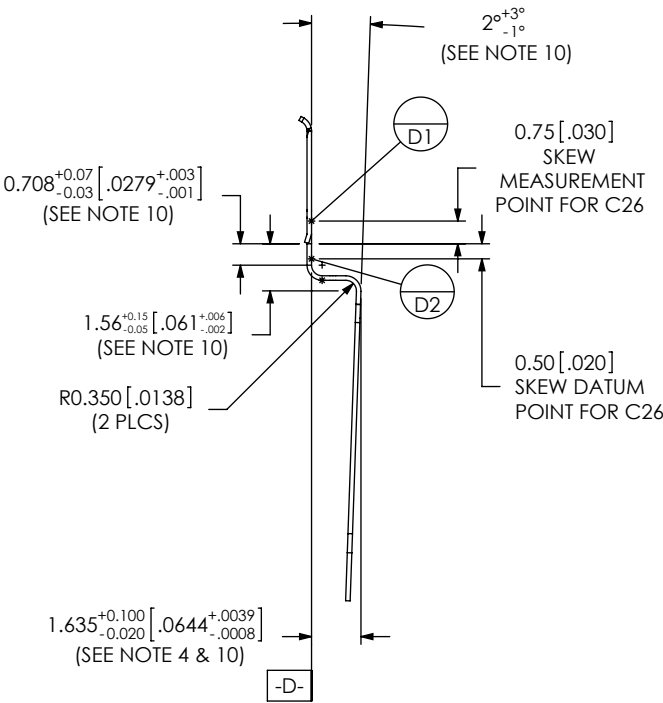
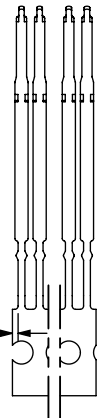
DWG. NO.
QRM8-XXX-XX-X-RA-GP-XX

BY: R MUSSER 10/02/2008 SHEET 2 OF 6

REVISION N



T-1M52-XX-X IN-PROCESS VIEW



PROPRIETARY NOTE

THIS DOCUMENT CONTAINS INFORMATION
CONFIDENTIAL AND PROPRIETARY TO
SAMTEC, INC. AND SHALL NOT BE REPRODUCED
OR TRANSFERRED TO OTHER DOCUMENTS OR
DISCLOSED TO OTHERS OR USED FOR ANY
PURPOSE OTHER THAN THAT WHICH IT WAS
OBTAINED WITHOUT THE EXPRESSED WRITTEN
CONSENT OF SAMTEC, INC.

DO NOT SCALE DRAWING

SHEET SCALE: 4:1

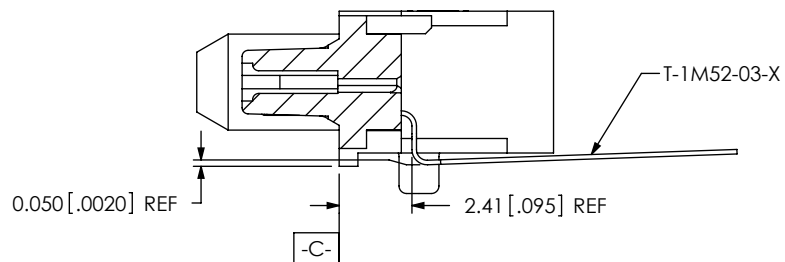
samtec

520 PARK EAST BLVD, NEW ALBANY, IN 47150
PHONE: 812-944-6733 FAX: 812-948-5047
e-Mail: info@SAMTEC.com code 55322

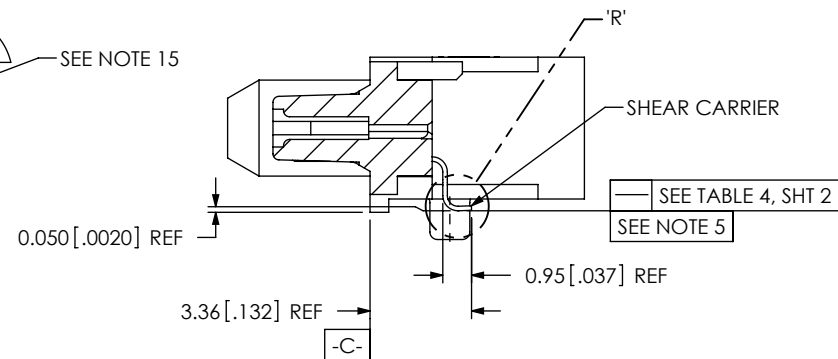
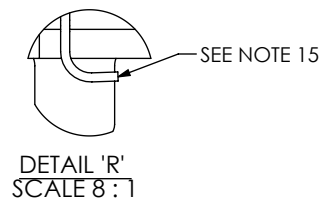
DESCRIPTION:
0.8mm Q-RATE RIGHT ANGLE TERMINAL ASSEMBLY

DWG. NO.
QRM8-XXX-XX-X-RA-GP-XX

BY: R MUSSER 10/02/2008 SHEET 3 OF 6

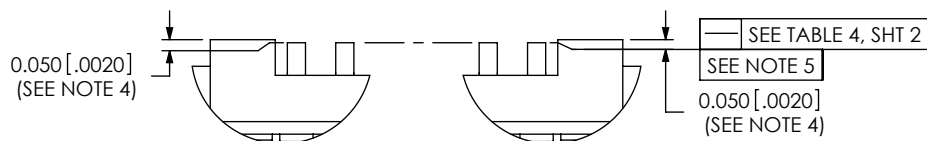
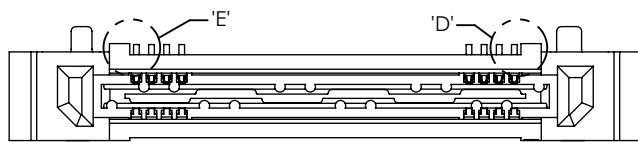


IN-PROCESS 3
(FILL BOTTOM ROW)
(SEE INSPECTION VIEW 1 FOR ASSEMBLY ORIENTATION AND CPC'S)



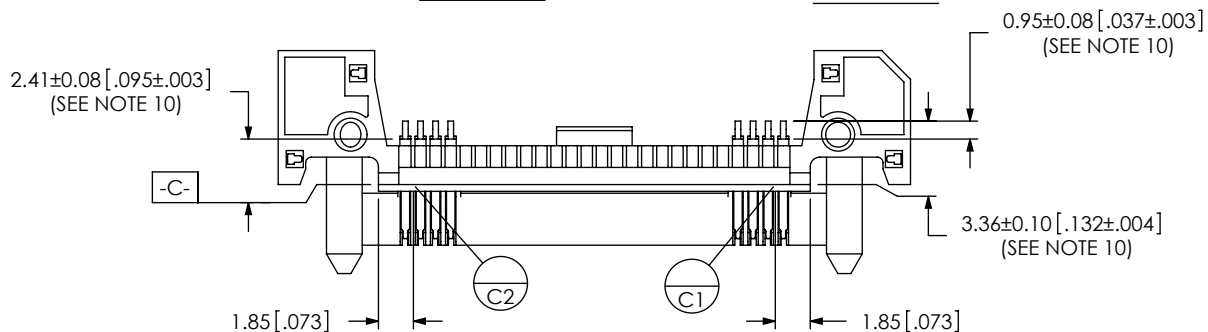
IN-PROCESS 4
(CUTOFF OF CARRIER)
(SEE INSPECTION VIEW 1 FOR ASSEMBLY ORIENTATION AND CPC'S)

INSPECTION VIEW 1

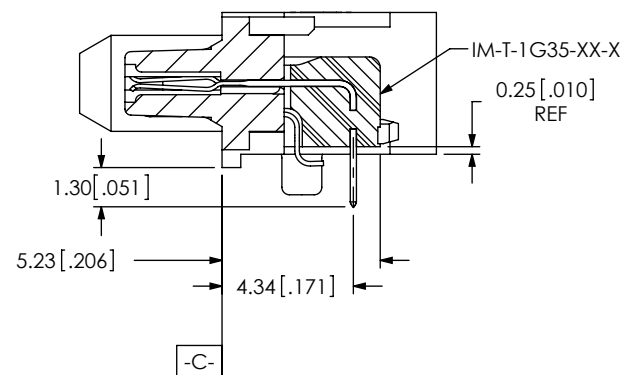


DETAIL 'E'
SCALE 8:1

DETAIL 'D'
SCALE 8:1



INSPECTION FOR IN-PROCESS 3 & 4
(CARRIER NOT SHOWN FOR IN PROCESS 3 INSPECTIONS)



IN-PROCESS 5
(FILL OVER MOLDED GROUND PLANE)
(IM-T-1G35-XX-X)

PROPRIETARY NOTE

THIS DOCUMENT CONTAINS INFORMATION
CONFIDENTIAL AND PROPRIETARY TO
SAMTEC, INC. AND SHALL NOT BE REPRODUCED
OR TRANSFERRED TO OTHER DOCUMENTS OR
DISCLOSED TO OTHERS OR USED FOR ANY
PURPOSE OTHER THAN THAT WHICH IT WAS
OBTAINED WITHOUT THE EXPRESSED WRITTEN
CONSENT OF SAMTEC, INC.

DO NOT SCALE DRAWING

SHEET SCALE: 4:1

samtec

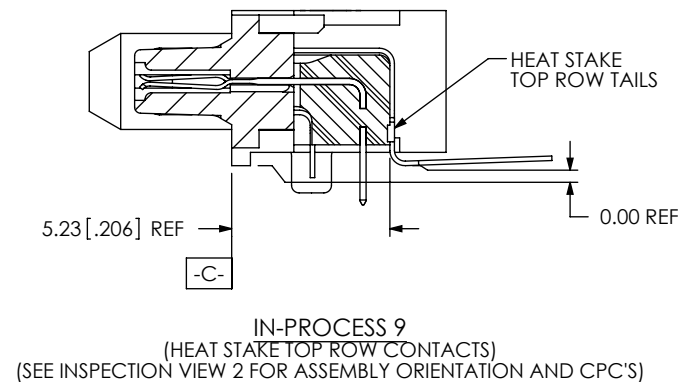
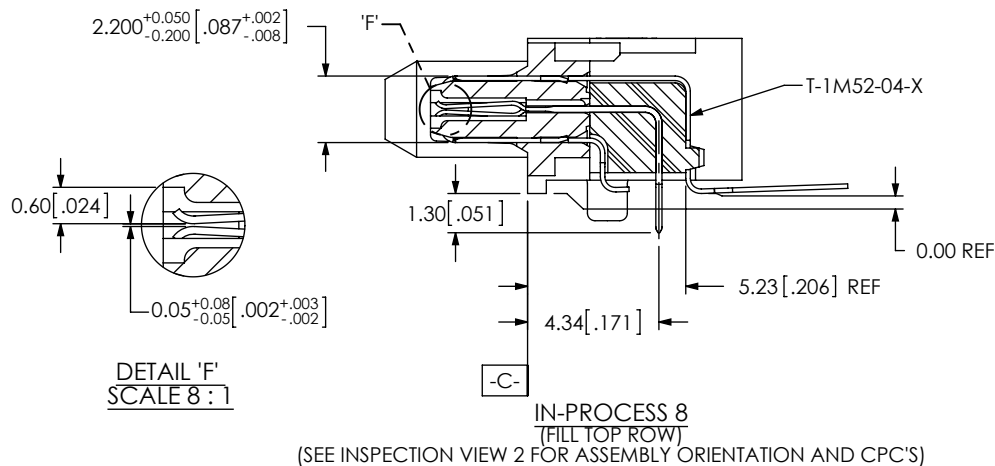
520 PARK EAST BLVD, NEW ALBANY, IN 47150
PHONE: 812-944-6733 FAX: 812-948-5047
e-Mail: info@SAMTEC.com code 55322

DESCRIPTION:
0.8mm Q-RATE RIGHT ANGLE TERMINAL ASSEMBLY

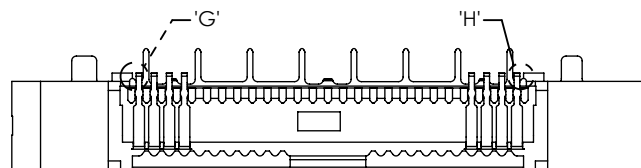
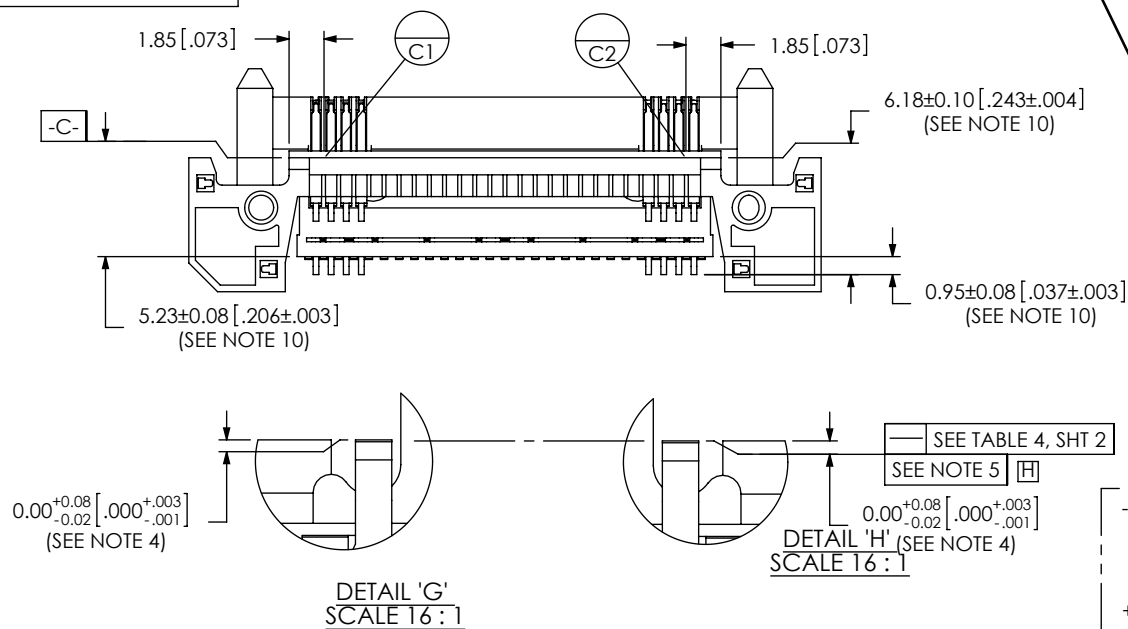
DWG. NO.
QRM8-XXX-XX-X-RA-GP-XX

BY: R MUSSER 10/02/2008 SHEET 4 OF 6

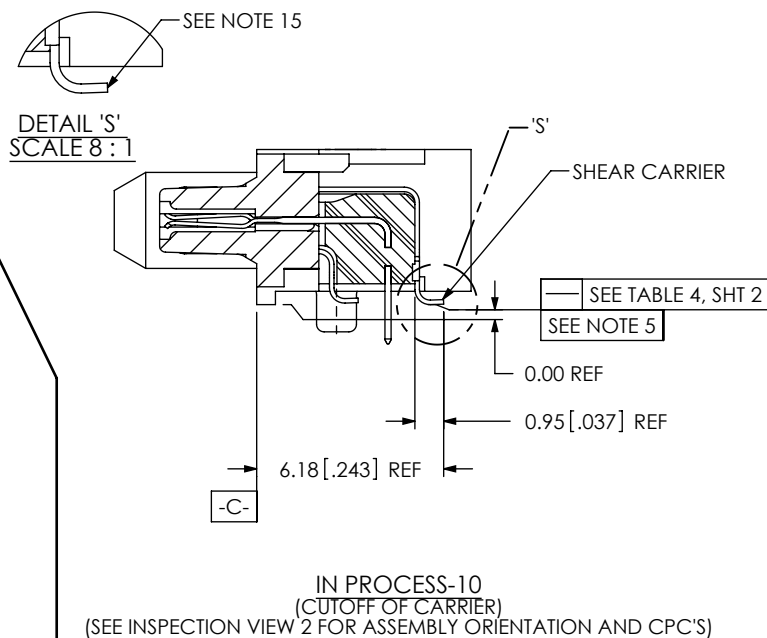
REVISION N



INSPECTION VIEW 2



INSPECTION FOR IN-PROCESS 8, 9 & 10
(CARRIER NOT SHOWN FOR IN-PROCESS 8 INSPECTIONS)



PROPRIETARY NOTE

THIS DOCUMENT CONTAINS INFORMATION
CONFIDENTIAL AND PROPRIETARY TO
SAMTEC, INC. AND SHALL NOT BE REPRODUCED
OR TRANSFERRED TO OTHER DOCUMENTS OR
DISCLOSED TO OTHERS OR USED FOR ANY
PURPOSE OTHER THAN THAT WHICH IT WAS
OBTAINED WITHOUT THE EXPRESSED WRITTEN
CONSENT OF SAMTEC, INC.

DO NOT SCALE DRAWING

SHEET SCALE: 4:1

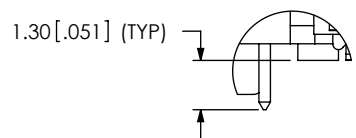
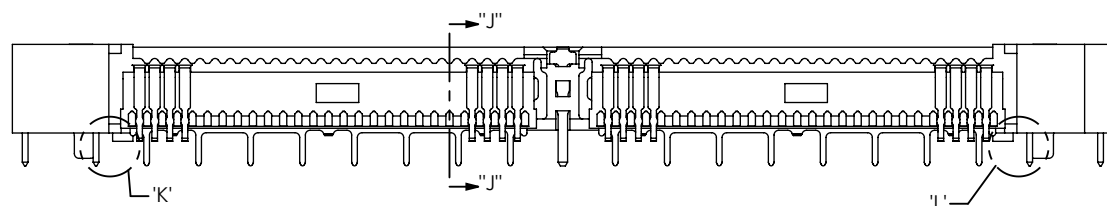
samtec

520 PARK EAST BLVD, NEW ALBANY, IN 47150
PHONE: 812-944-6733 FAX: 812-948-5047
e-Mail: info@SAMTEC.com code 55322

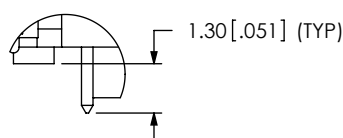
DESCRIPTION:
0.8mm Q-RATE RIGHT ANGLE TERMINAL ASSEMBLY

DWG. NO.
QRM8-XXX-XX-X-RA-GP-XX

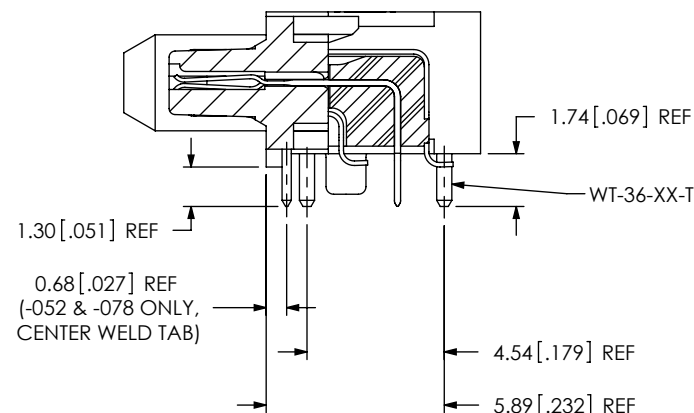
BY: R MUSSER 10/02/2008 SHEET 5 OF 6



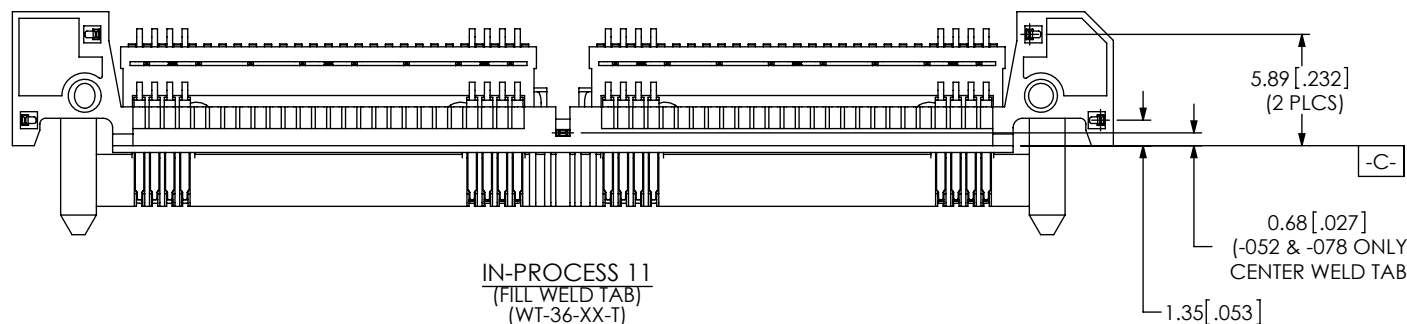
DETAIL 'K'
SCALE 5 : 1



DETAIL 'L'
SCALE 5 : 1



SECTION "J"-"J"



IN-PROCESS 11
(FILL WELD TAB)
(WT-36-XX-T)

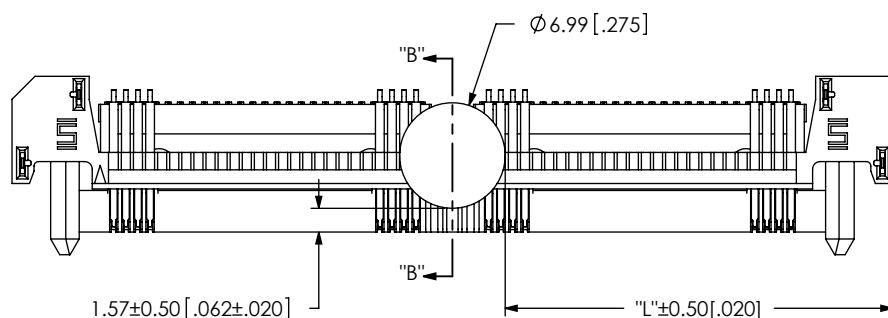


FIG 2
-K' OPTION
(USE K-DOT-.276-.375-.005)
(QRM8-052-01-X-RA-GP-K SHOWN)
(SOME DETAIL REMOVED FOR CLARITY)

SECTION "B"-"B"
SCALE 2 : 1

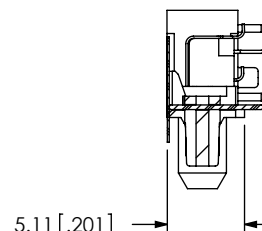


TABLE 5

No OF POSITIONS	"L"
-026	13.24 [0.521]
-052	25.64 [1.009]
-078	38.04 [1.498]

PROPRIETARY NOTE

THIS DOCUMENT CONTAINS INFORMATION
CONFIDENTIAL AND PROPRIETARY TO
SAMTEC, INC. AND SHALL NOT BE REPRODUCED
OR TRANSFERRED TO OTHER DOCUMENTS OR
DISCLOSED TO OTHERS OR USED FOR ANY
PURPOSE OTHER THAN THAT WHICH IT WAS
OBTAINED WITHOUT THE EXPRESSED WRITTEN
CONSENT OF SAMTEC, INC.

DO NOT SCALE DRAWING

SHEET SCALE: 4:1

samtec

520 PARK EAST BLVD, NEW ALBANY, IN 47150
PHONE: 812-944-6733 FAX: 812-948-5047
e-Mail info@SAMTEC.com code 55322

DESCRIPTION:
0.8mm Q-RATE RIGHT ANGLE TERMINAL ASSEMBLY

DWG. NO.
QRM8-XXX-XX-X-RA-GP-XX

BY: R MUSSER 10/02/2008 SHEET 6 OF 6