



Connectors > Modular Jacks & Plugs > RJ45 Connectors



Modular Jack & Plug Interface Type: **RJ45**
Port Configuration: **Multiple Ports**
Port Matrix Configuration: **1 x 2**
Modular Jacks & Plugs Products: **RJ Type Jacks & Plugs**
Connector Contact Density: **Standard**

Features

Packaging Features

Packaging Quantity	225
Packaging Method	Box, Box & Tray

Mechanical Attachment

Panel Mount Feature	Without
Connector Mounting Type	Panel Mount, Board Mount

Contact Features

Contact Underplating Material	Nickel
PCB Contact Termination Area Plating Material	Tin
Contact Current Rating (Max)	1.5 A, .2 A
Contact Mating Area Plating Material	Gold
Contact Base Material	Phosphor Bronze
Contact Mating Area Plating Material Thickness	1.27 μm[50 μin]

Body Features

Shield Plating Material	Tin over Copper
-------------------------	-----------------



Shield Material	Copper Zinc Alloy
PCB Ground Tab Location	4.57 mm[.18 in]
Modular Jack Latch Orientation	Standard - Latch Down
Connector Profile	Standard

Industry Standards

UL Flammability Rating	UL 94V-0
Performance Category	Cat 4

Operation/Application

Indicator Type	No Indicator
Shielded	Yes
Circuit Application	Signal

Configuration Features

Number of PCB Ground Tabs	2
Number of Panel Ground Tabs	9
Multiple Port Configuration	Ganged
Port Configuration	Multiple Ports
Port Matrix Configuration	1 x 2
Connector Contact Density	Standard
Number of Positions	8
Number of Loaded Positions	8
PCB Mount Orientation	Right Angle

Product Type Features

Connector Product Type	Connector Assembly
Modular Jack & Plug Interface Type	RJ45
Modular Jacks & Plugs Products	RJ Type Jacks & Plugs
Modular Connector Style	Jack
Grounding Options	PCB and Panel Ground
Connector & Contact Terminates To	Printed Circuit Board

Termination Features

Termination Method to PCB	Through Hole - Solder
Termination Post & Tail Length	3.56 mm[.14 in]

Housing Features



Mating Entry Location	Side
Centerline (Pitch)	1.02 mm[.04 in]
Housing Color	Black
Housing Material	High Temperature Nylon

Dimensions

Connector Height	13.97 mm[.55 in]
------------------	------------------

Usage Conditions

Operating Temperature Range	-40 – 85 °C[-40 – 185 °F]
-----------------------------	---------------------------

Other

EU RoHS Compliance	Compliant
EU ELV Compliance	Compliant

Product Compliance

For compliance documentation, visit the product page on TE.com>

EU RoHS Directive 2011/65/EU	Compliant
EU ELV Directive 2000/53/EC	Compliant
China RoHS 2 Directive MIIT Order No 32, 2016	No Restricted Materials Above Threshold
EU REACH Regulation (EC) No. 1907/2006	Current ECHA Candidate List: JUNE 2024 (241) Candidate List Declared Against: JUNE 2024 (241) Does not contain REACH SVHC
Halogen Content	Not Low Halogen - contains Br or Cl > 900 ppm.
Solder Process Capability	Wave solder capable to 265°C

Product Compliance Disclaimer

This information is provided based on reasonable inquiry of our suppliers and represents our current actual knowledge based on the information they provided. This information is subject to change. The part numbers that TE has identified as EU RoHS compliant have a maximum concentration of 0.1% by weight in homogenous materials for lead, hexavalent chromium, mercury, PBB, PBDE, DBP, BBP, DEHP, DIBP, and 0.01% for cadmium, or qualify for an exemption to these limits as defined in the Annexes of Directive 2011/65/EU (RoHS2). Finished electrical and electronic equipment products will be CE marked as required by Directive 2011/65/EU. Components may not be CE marked. Additionally, the part numbers that TE has identified as EU ELV compliant have a maximum concentration of 0.1% by weight in homogenous materials for lead, hexavalent chromium, and mercury, and 0.01% for cadmium, or qualify for an exemption to these limits as defined in the Annexes of Directive 2000/53/EC (ELV). Regarding the REACH Regulation, the information TE provides on SVHC in articles for this part number is based on the latest European Chemicals Agency (ECHA) ‘Guidance on requirements for substances in articles’ posted at this URL: <https://echa.europa.eu/guidance-documents/guidance-on-reach>



Compatible Parts

TE Part # 188729-1
8P.COVER/SOLD.STOP

Also in the Series | OEG Miniature Relay PCF

Combo Jacks(1)

Connector Contacts(1)

Mini PCI Express & mSATA(1)

Power Contacts(1)

RJ14 Connectors(1)

RJ22 Connectors(1)

RJ25 Connectors(8)

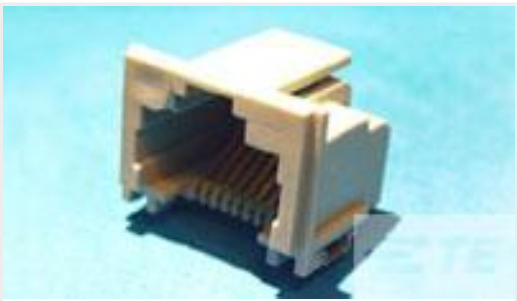
Customers Also Bought

TE Part #2199230-3
M.2 0.5PITCH 4.2H KEY B 15U" AU

TE Part #3-5177986-2
0.8FH,P08H.5,060,08/Sn,TR,SC

TE Part #1-966067-2
FER,WIRE,PL SLV,1.50/16,L8,BLACK,LP

TE Part #2227302-1
CAGE ASSY, PRESS FIT, SFP



TE Part #5406721-3
MJ,RJ45,SMT,BLACK,22"REEL



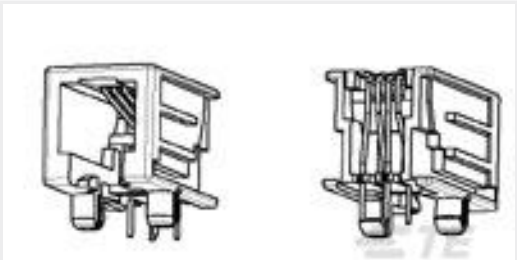
TE Part #1422006-4
V23079G2003X074



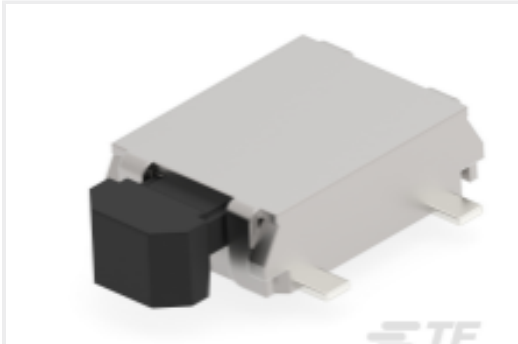
TE Part #5406562-2
MJ,2PORT,8P,SHLD,PNL GRD,CAT4



TE Part #1-5406721-3
MJ,RJ45,SMT,BLACK,22"REEL,30 Au



TE Part #1705951-1
Modular Jack SE, 8/8, Gold flash



TE Part #1571262-4
SWITCH,TACTILE,SMT,W/BOSS,T&R

Documents

Product Drawings

MJ ASSY,2PORT,8POS,SHLD

English

CAD Files

3D PDF

3D

Customer View Model

ENG_CVM_CVM_5406562-1_A.2d_dxf.zip

English

Customer View Model

ENG_CVM_CVM_5406562-1_A.3d_igs.zip

English

Customer View Model

ENG_CVM_CVM_5406562-1_A.3d_stp.zip

English

By downloading the CAD file I accept and agree to the [Terms and Conditions](#) of use.

Product Specifications

Application Specification

English