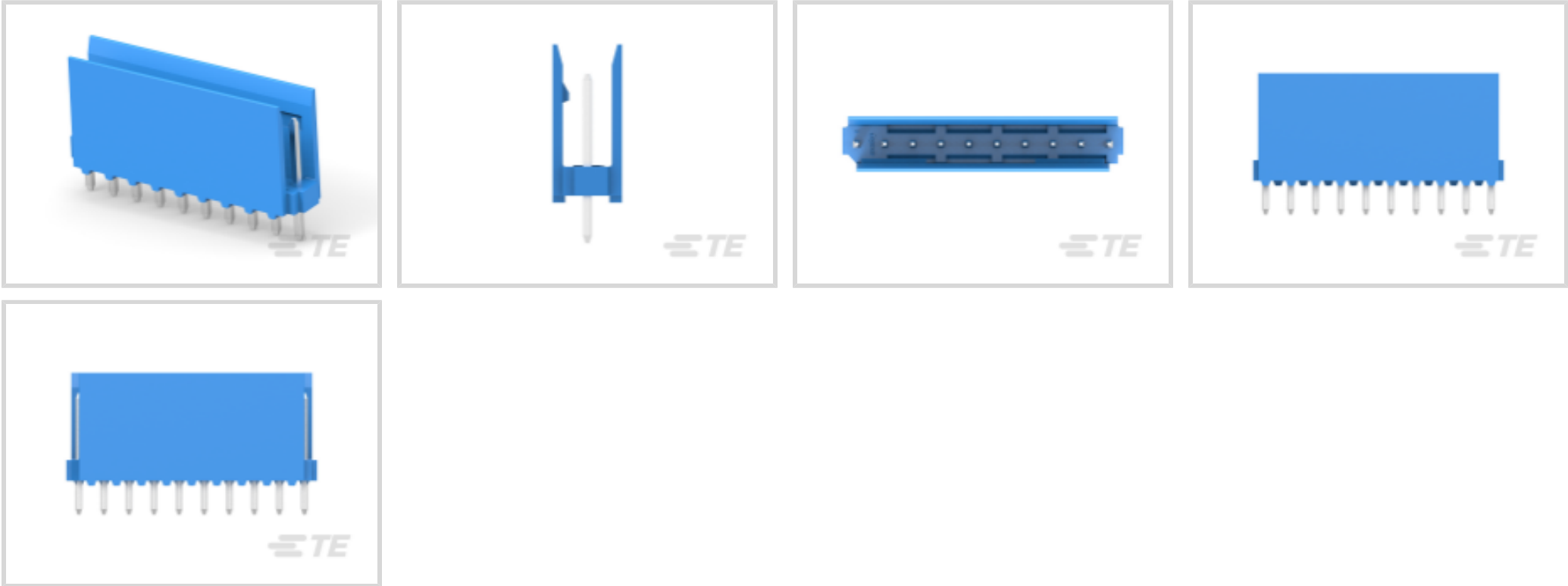




Connectors > PCB Connectors > PCB Headers & Receptacles > HE13/HE14 TH Headers, SRST



PCB Connector Assembly Type: **PCB Mount Header**

PCB Mount Orientation: **Vertical**

Connector System: **Wire-to-Board**

Number of Positions: **10**

Number of Rows: **1**

[All HE13/HE14 TH Headers, SRST \(18\)](#)

Features

Electrical Characteristics

Insulation Resistance	1000 MΩ
Dielectric Withstanding Voltage (Max)	500 V

Packaging Features

Packaging Quantity	3000
Packaging Method	Box

Industry Standards

Compatible With Approved Standards Products	UL E28476, CSA LR7189
UL Flammability Rating	UL 94V-0

Mechanical Attachment

Panel Mount Feature	Without
Mating Retention	With
Mating Alignment Type	Polarization
PCB Mount Retention	Without



Connector Mounting Type	Board Mount
Mating Alignment	With

Termination Features

Termination Post & Tail Length	2.9 mm
Square Termination Post & Tail Dimension	.63 mm[.025 in]
Termination Method to PCB	Through Hole - Solder

Contact Features

Contact Underplating Material	Nickel
Contact Mating Area Plating Material Thickness	.8 µm[31 µin]
Mating Square Post Dimension	.64 mm[.025 in]
Contact Shape & Form	Square
Contact Mating Area Length	7 mm
Contact Base Material	Phosphor Bronze
PCB Contact Termination Area Plating Material	Tin
Contact Mating Area Plating Material Finish	Matte
Contact Mating Area Plating Material	Tin
Contact Type	Pin
Contact Current Rating (Max)	3 A

Housing Features

Housing Material	High Temperature Thermoplastic
Centerline (Pitch)	2.54 mm[.1 in]

Configuration Features

Connector Contact Load Condition	Fully Loaded
PCB Mount Orientation	Vertical
Number of Positions	10
Number of Rows	1

Product Type Features

PCB Connector Assembly Type	PCB Mount Header
Connector System	Wire-to-Board
Header Type	Partially Shrouded
Sealable	No
Connector & Contact Terminates To	Printed Circuit Board



Body Features

Primary Product Color	Blue
-----------------------	------

Usage Conditions

Operating Temperature Range	-40 – 100 °C[-40 – 212 °F]
-----------------------------	----------------------------

Operation/Application

Circuit Application	Signal
---------------------	--------

Other

EU RoHS Compliance	Compliant
EU ELV Compliance	Compliant

Product Compliance

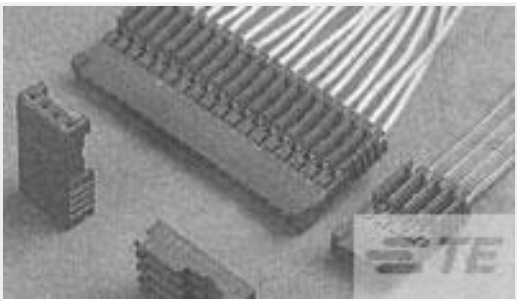
For compliance documentation, visit the product page on TE.com>

EU RoHS Directive 2011/65/EU	Compliant
EU ELV Directive 2000/53/EC	Compliant
China RoHS 2 Directive MIIT Order No 32, 2016	No Restricted Materials Above Threshold
EU REACH Regulation (EC) No. 1907/2006	Current ECHA Candidate List: JUNE 2024 (241) Candidate List Declared Against: JUNE 2024 (241) Does not contain REACH SVHC
Halogen Content	Not Low Halogen - contains Br or Cl > 900 ppm.
Solder Process Capability	Wave solder capable to 265°C

Product Compliance Disclaimer

This information is provided based on reasonable inquiry of our suppliers and represents our current actual knowledge based on the information they provided. This information is subject to change. The part numbers that TE has identified as EU RoHS compliant have a maximum concentration of 0.1% by weight in homogenous materials for lead, hexavalent chromium, mercury, PBB, PBDE, DBP, BBP, DEHP, DIBP, and 0.01% for cadmium, or qualify for an exemption to these limits as defined in the Annexes of Directive 2011/65/EU (RoHS2). Finished electrical and electronic equipment products will be CE marked as required by Directive 2011/65/EU. Components may not be CE marked. Additionally, the part numbers that TE has identified as EU ELV compliant have a maximum concentration of 0.1% by weight in homogenous materials for lead, hexavalent chromium, and mercury, and 0.01% for cadmium, or qualify for an exemption to these limits as defined in the Annexes of Directive 2000/53/EC (ELV). Regarding the REACH Regulation, the information TE provides on SVHC in articles for this part number is based on the latest European Chemicals Agency (ECHA) ‘Guidance on requirements for substances in articles’ posted at this URL: <https://echa.europa.eu/guidance-documents/guidance-on-reach>

Compatible Parts



TE Part # 1-281786-0
PLUG HE14 IDC 180 10 P AWG 28-26



TE Part # 1-281838-0
HOUSING HE13 HE14 COSI 10 P

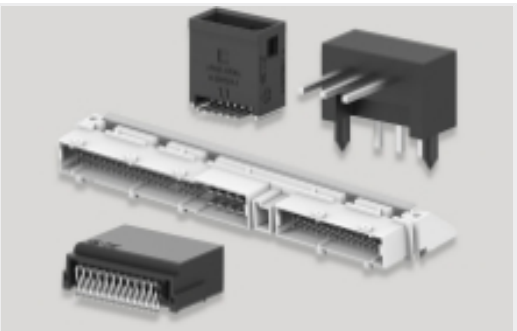
Also in the Series | AMPMODU HE 13/HE 14



Connector Contacts(4)



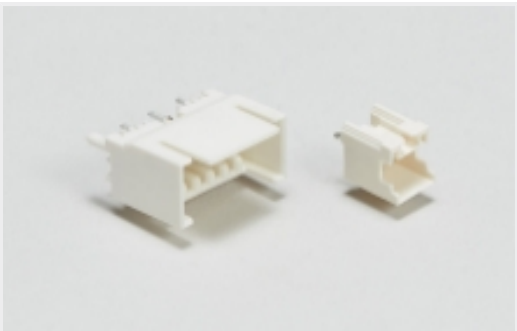
Insertion & Extraction Tools(1)



PCB Headers & Receptacles(66)

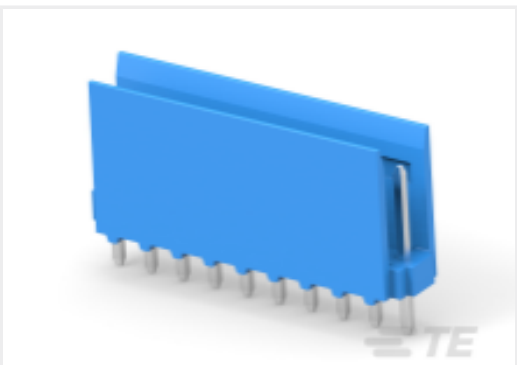


Wire-to-Board Connector Assemblies & Housings(58)

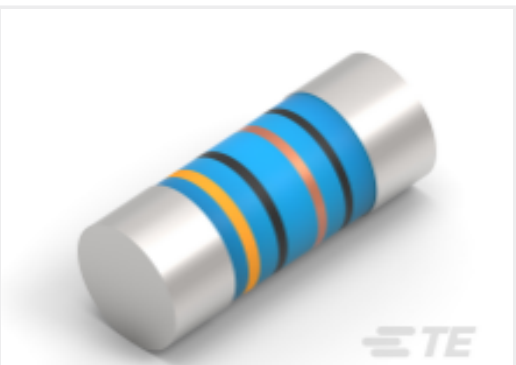


Wire-to-Board Headers & Receptacles (66)

Customers Also Bought



TE Part #CAT-AM74-H3401
HE13/HE14 TH Headers, SRST



TE Part #6-2176314-9
MELF SMA-A 10R 1% 50PPM 0102 0.3 W



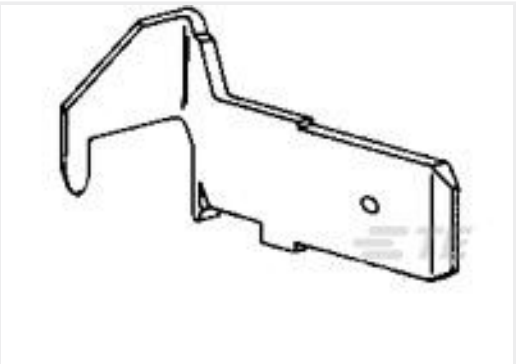
TE Part #927847-1
STC REC 6.3 Contact SRC Sn



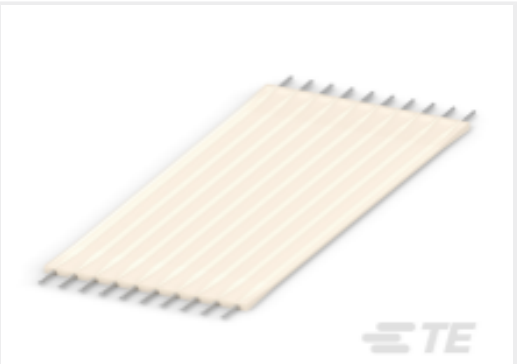
TE Part #2-1393302-3
V23134A0052G243-EV-CBOX



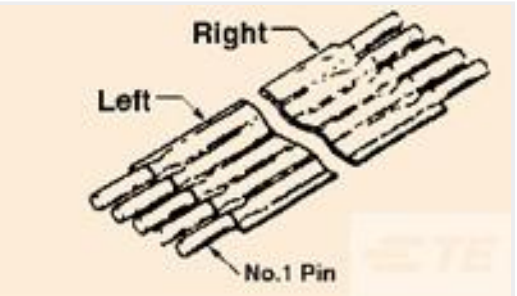
TE Part #154512-2
187 FASTON HSG.,REC.,1 POS, NATURAL



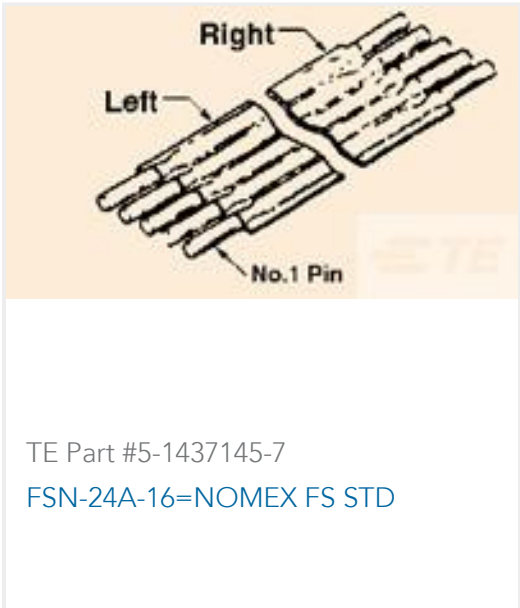
TE Part #160650-2
250 FASTON,PCB TAB,TNBR



TE Part #4-1474644-0
FSN-23A-20



TE Part #4-1437144-0
FSN-23A-20=NOMEX FS STD



Documents

Product Drawings

HEADER HE14 STRAIGHT 10 P

English

CAD Files

Customer View Model

ENG_CVM_CVM_1-281695-0_G.2d_dxf.zip

English

3D PDF

3D

Customer View Model

ENG_CVM_CVM_1-281695-0_G.3d_igs.zip

English

Customer View Model

ENG_CVM_CVM_1-281695-0_G.3d_stp.zip

English

By downloading the CAD file I accept and agree to the [Terms and Conditions](#) of use.

Product Specifications

Product Specification

French