



Connectors > Automotive Connectors > Automotive Connector Accessories > Automotive Connector Caps & Covers



Protection & Strain Relief Accessory Type: **Cover**

Strain Relief: **Without**

Primary Product Color: **Black**

Primary Product Material: **PBT GF**

Operating Temperature (Max): **80 °C, 100 °C, 90 °C, 85 °C, 75 °C, 70 °C [212 °F]**

Features

Packaging Features

Packaging Method	Box
Packaging Quantity	5000

Other

Serviceable	No
EU RoHS Compliance	Compliant
EU ELV Compliance	Compliant

Product Type Features

Protection & Strain Relief Accessory Type	Cover
---	-------

Mechanical Attachment

Strain Relief	Without
---------------	---------

Body Features

Primary Product Color	Black
Primary Product Material	PBT GF

Usage Conditions

--	--



Operating Temperature (Max)	80 °C, 100 °C, 90 °C, 85 °C, 75 °C, 70 °C [212 °F]
Operating Temperature Range	-40 – 100 °C[-40 – 212 °F]

Product Compliance

For compliance documentation, visit the product page on TE.com>

EU RoHS Directive 2011/65/EU	Compliant
EU ELV Directive 2000/53/EC	Compliant
China RoHS 2 Directive MIIT Order No 32, 2016	No Restricted Materials Above Threshold
EU REACH Regulation (EC) No. 1907/2006	Current ECHA Candidate List: JUNE 2024 (241) Candidate List Declared Against: JUNE 2024 (241) Does not contain REACH SVHC
Halogen Content	Low Halogen - Br, Cl, F, I < 900 ppm per homogenous material. Also BFR/CFR/PVC Free
Solder Process Capability	Not reviewed for solder process capability

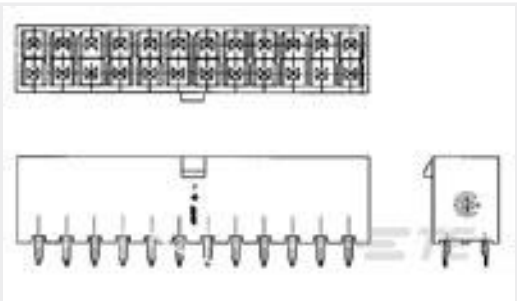
Product Compliance Disclaimer

This information is provided based on reasonable inquiry of our suppliers and represents our current actual knowledge based on the information they provided. This information is subject to change. The part numbers that TE has identified as EU RoHS compliant have a maximum concentration of 0.1% by weight in homogenous materials for lead, hexavalent chromium, mercury, PBB, PBDE, DBP, BBP, DEHP, DIBP, and 0.01% for cadmium, or qualify for an exemption to these limits as defined in the Annexes of Directive 2011/65/EU (RoHS2). Finished electrical and electronic equipment products will be CE marked as required by Directive 2011/65/EU. Components may not be CE marked. Additionally, the part numbers that TE has identified as EU ELV compliant have a maximum concentration of 0.1% by weight in homogenous materials for lead, hexavalent chromium, and mercury, and 0.01% for cadmium, or qualify for an exemption to these limits as defined in the Annexes of Directive 2000/53/EC (ELV). Regarding the REACH Regulation, the information TE provides on SVHC in articles for this part number is based on the latest European Chemicals Agency (ECHA) ‘Guidance on requirements for substances in articles’ posted at this URL: <https://echa.europa.eu/guidance-documents/guidance-on-reach>

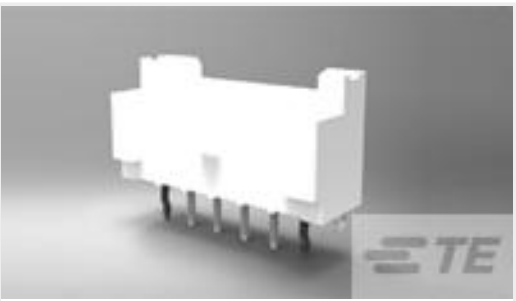
Compatible Parts



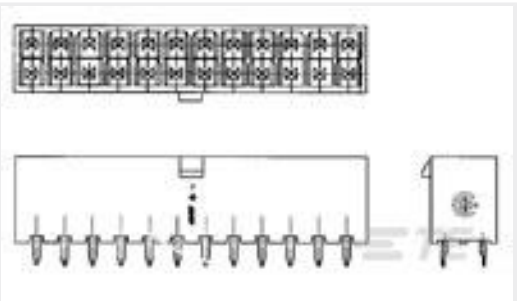
Customers Also Bought



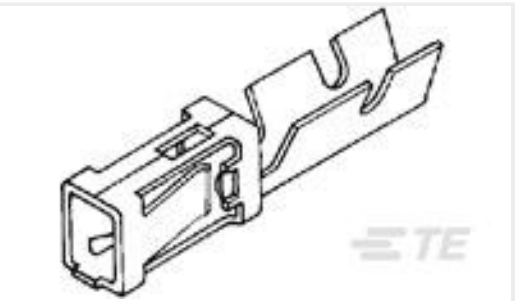
TE Part #2-1586037-0
20P VERT HDR VAL-U-LOK V2



TE Part #2132415-5
EP2.5 Shrouded HDR ASSY 5P VERT w /o boss



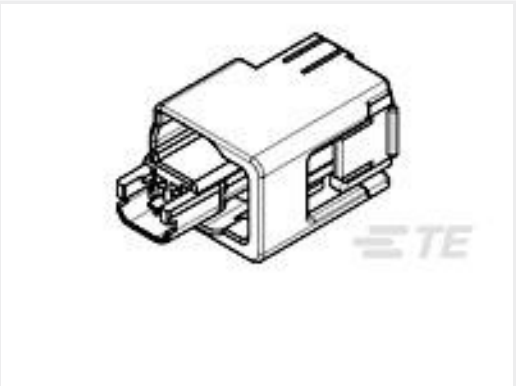
TE Part #1-1586037-6
16P VERT HDR VAL-U-LOK V2



TE Part #181299-1
MOD I CRIMP CONTACT



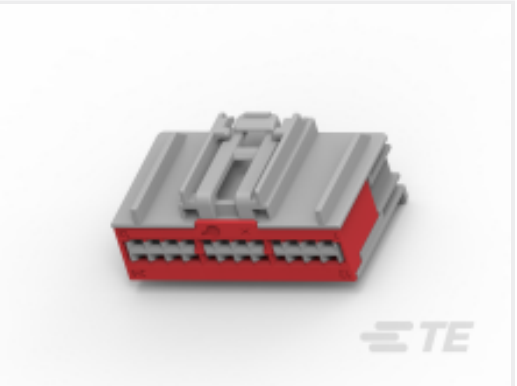
TE Part #1379217-5
5POS MIXED MQS REC COD A



TE Part #1438426-3
0.64MM, 2POSN SEALED PLUG, GRA



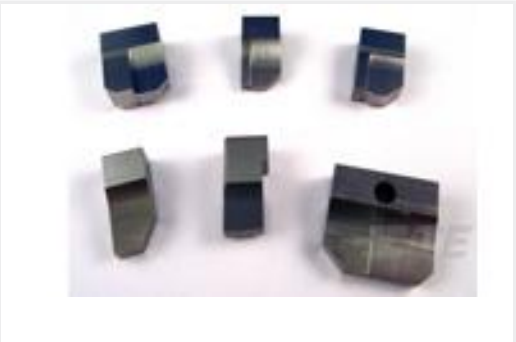
TE Part #1-963725-1
MQS PIN CONTACT



TE Part #1-1452839-5
24 POS FEMALE HSG ASSY



TE Part #1-2379006-1
52POS, HYBRID, REC HSG ASSY



TE Part #1338690-1
ANVIL, COMBINATION .055

Documents

Product Drawings

COVER FOR 5W MPQ+MQS HSG

English

CAD Files

Customer View Model

ENG_CVM_CVM_1379218-2_O.2d_dxf.zip

English

3D PDF

3D

Customer View Model

ENG_CVM_CVM_1379218-2_O.3d_igs.zip

English

Customer View Model

ENG_CVM_CVM_1379218-2_O.3d_stp.zip

English

By downloading the CAD file I accept and agree to the Terms and Conditions of use.

Product Specifications



2 WAY MPQ + 3 WAY MQS SOCKET HOUSING

English

Product Specification

English