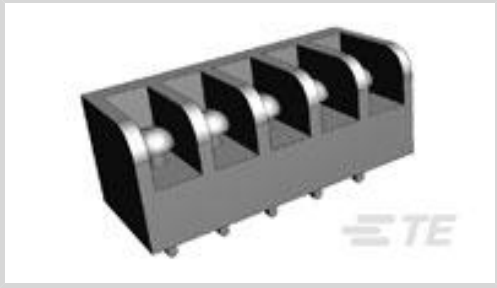




Connectors > Terminal Blocks & Strips > Barrier Strips



Number of Positions: 5
Barrier Strip Style: **Tri-Barrier**
Bottom Termination Type: **Printed Circuit Pin**
Connector System: **Wire-to-Board**
Centerline (Pitch): **6.35 mm [.25 in]**

Features

Industry Standards

UL Flammability Rating	UL 94V-0
------------------------	----------

Packaging Features

Packaging Method	Package
Packaging Quantity	300

Operation/Application

Circuit Application	Power
---------------------	-------

Mechanical Attachment

Top Termination Type	Wire Clamp Combo Head
Mounting Options	None
Screw Plating Material	Zinc
Screw Material	Steel
Thread Size	M3
Screw Head Type	Combo Phil-Slot
Connector Mounting Type	Board Mount

Contact Features

Contact Base Material	Copper Alloy
PCB Contact Termination Area Plating Material	Tin
Contact Current Rating (Max)	10 A



Dimensions

Product Length	33.02 mm[1.3 in]
Wire Size	30 – 16 AWG

Housing Features

Housing Material	Thermoplastic
Centerline (Pitch)	6.35 mm[.25 in]

Product Type Features

Block Style	Flat Bottom with standoffs
Connector System	Wire-to-Board
Connector & Contact Terminates To	Printed Circuit Board

Body Features

Primary Product Color	Black
Product Orientation	Vertical
Barrier Strip Style	Tri-Barrier

Configuration Features

Number of Levels	1
Number of Positions	5
Number of Rows	1

Termination Features

Bottom Termination Type	Printed Circuit Pin
-------------------------	---------------------

Electrical Characteristics

Operating Voltage	300 V
-------------------	-------

Usage Conditions

Operating Temperature Range	-40 – 105 °C[-40 – 221 °F]
-----------------------------	----------------------------

Other

EU RoHS Compliance	Compliant
EU ELV Compliance	Compliant

Product Compliance

[For compliance documentation, visit the product page on TE.com>](#)

EU RoHS Directive 2011/65/EU	Compliant
------------------------------	-----------



EU ELV Directive 2000/53/EC	Compliant
China RoHS 2 Directive MIIT Order No 32, 2016	No Restricted Materials Above Threshold
EU REACH Regulation (EC) No. 1907/2006	Current ECHA Candidate List: JUNE 2024 (241) Candidate List Declared Against: JUNE 2024 (241) Does not contain REACH SVHC
Halogen Content	BFR/CFR/PVC Free, but Br/Cl >900 ppm in other sources.
Solder Process Capability	Wave solder capable to 265°C

Product Compliance Disclaimer

This information is provided based on reasonable inquiry of our suppliers and represents our current actual knowledge based on the information they provided. This information is subject to change. The part numbers that TE has identified as EU RoHS compliant have a maximum concentration of 0.1% by weight in homogenous materials for lead, hexavalent chromium, mercury, PBB, PBDE, DBP, BBP, DEHP, DIBP, and 0.01% for cadmium, or qualify for an exemption to these limits as defined in the Annexes of Directive 2011/65/EU (RoHS2). Finished electrical and electronic equipment products will be CE marked as required by Directive 2011/65/EU. Components may not be CE marked. Additionally, the part numbers that TE has identified as EU ELV compliant have a maximum concentration of 0.1% by weight in homogenous materials for lead, hexavalent chromium, and mercury, and 0.01% for cadmium, or qualify for an exemption to these limits as defined in the Annexes of Directive 2000/53/EC (ELV). Regarding the REACH Regulation, the information TE provides on SVHC in articles for this part number is based on the latest European Chemicals Agency (ECHA) 'Guidance on requirements for substances in articles' posted at this URL: <https://echa.europa.eu/guidance-documents/guidance-on-reach>

Compatible Parts

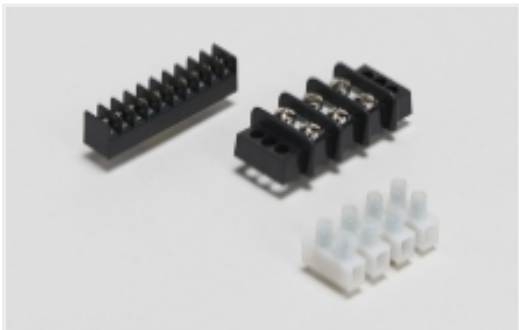


TE Part # 2-1546011-9
3PCV-05-008=.250 TRI-BARR STRP, SS Screw



TE Part # 1546011-5
3PCV-05-008=.250 TRI-BARR STRP

Also in the Series | Buchanan 3 Series



Barrier Strips(34)

Customers Also Bought



TE Part #5646529-1
Z-PACK 2MM HM TYPE A/B 169P

TE Part #5-147377-2
20 SYS50 SMT HDR DR SHD SN

TE Part #6469083-1
HMZD 3PAIR, HDR ASSY, 25MM MOD

TE Part #5-147377-3
30 SYS50 SMT HDR DR SHD SN

TE Part #3-6318490-6
.5FHR04H,220,S,GIG,08/Sn,HT,NSYes

TE Part #CONREVSMA001
RP-SMA Jack 50 Ohm PCB Through Hole

TE Part #5-1437646-7
3PCV-08-006=3PCV-ASSY

TE Part #1649329-1
RTE24005

TE Part #2016677-4
RF CA,UMCC GEN2-GEN4,0.81,L80, BLACK

TE Part #2357739-1
16G,05FH,REC,220PIN,4H,Hard Tray

Documents

CAD Files

Customer View Model

ENG_CVM_CVM_4-1437646-5_H.2d_dxf.zip

English

3D PDF

3D

Customer View Model

ENG_CVM_CVM_4-1437646-5_H.3d_igs.zip

English

Customer View Model

ENG_CVM_CVM_4-1437646-5_H.3d_stp.zip

English

By downloading the CAD file I accept and agree to the Terms and Conditions of use.

Datasheets & Catalog Pages

1-1773458-2_BARRIER_STRIPS_QUICK_REFERENCE_GUIDE

English