



Connectors > Modular Jacks & Plugs > RJ22 Connectors



Connector Profile: **Standard**

Modular Jacks & Plugs Products: **RJ Type Jacks & Plugs**

Connector Contact Density: **Standard**

Modular Connector Style: **Jack**

PCB Mount Orientation: **Vertical**

Features

Mechanical Attachment

Connector Mounting Type	Board Mount
Panel Mount Feature	Without

Dimensions

PCB Thickness (Recommended)	1.6 mm[.063 in]
Connector Height	12.7 mm[.5 in]

Contact Features

Contact Underplating Material	Nickel
Contact Base Material	Phosphor Bronze
Contact Mating Area Plating Material	Gold or Gold Flash over Palladium Nickel
Contact Current Rating (Max)	1.5 A
PCB Contact Termination Area Plating Material	Tin

Housing Features

Housing Color	Black
Centerline (Pitch)	1.02 mm[.04 in]



Mating Entry Location	Top
-----------------------	-----

Housing Material	PA 9T GF
------------------	----------

Operation/Application

Circuit Application	Signal
---------------------	--------

Shielded	No
----------	----

Configuration Features

Number of Positions	4
---------------------	---

Port Matrix Configuration	1 x 1
---------------------------	-------

Port Configuration	Single Port
--------------------	-------------

Connector Contact Density	Standard
---------------------------	----------

PCB Mount Orientation	Vertical
-----------------------	----------

Number of Loaded Positions	4
----------------------------	---

Product Type Features

Connector & Contact Terminates To	Printed Circuit Board
-----------------------------------	-----------------------

Connector System	Cable-to-Board
------------------	----------------

Modular Jacks & Plugs Products	RJ Type Jacks & Plugs
--------------------------------	-----------------------

Modular Connector Style	Jack
-------------------------	------

Body Features

Modular Jack Latch Orientation	Standard - Latch Down
--------------------------------	-----------------------

Connector Profile	Standard
-------------------	----------

Termination Features

Termination Method to PCB	Surface Mount
---------------------------	---------------

Usage Conditions

Operating Temperature Range	-40 – 85 °C[-40 – 185 °F]
-----------------------------	---------------------------

Industry Standards

Performance Category	Cat 3
----------------------	-------

UL Flammability Rating	UL 94V-0
------------------------	----------

Packaging Features

Packaging Method	Reel, Tape Mounted on Reel
------------------	----------------------------

Packaging Quantity	300
--------------------	-----

Other

--	--



EU RoHS Compliance	Compliant
EU ELV Compliance	Compliant

Product Compliance


For compliance documentation, visit the product page on TE.com>

EU RoHS Directive 2011/65/EU	Compliant
EU ELV Directive 2000/53/EC	Compliant
China RoHS 2 Directive MIIT Order No 32, 2016	No Restricted Materials Above Threshold
EU REACH Regulation (EC) No. 1907/2006	Current ECHA Candidate List: JUNE 2024 (241) Candidate List Declared Against: JUNE 2024 (241) Does not contain REACH SVHC
Halogen Content	Low Halogen - Br, Cl, F, I < 900 ppm per homogenous material. Also BFR/CFR/PVC Free
Solder Process Capability	Reflow solder capable to 260°C


Product Compliance Disclaimer

This information is provided based on reasonable inquiry of our suppliers and represents our current actual knowledge based on the information they provided. This information is subject to change. The part numbers that TE has identified as EU RoHS compliant have a maximum concentration of 0.1% by weight in homogenous materials for lead, hexavalent chromium, mercury, PBB, PBDE, DBP, BBP, DEHP, DIBP, and 0.01% for cadmium, or qualify for an exemption to these limits as defined in the Annexes of Directive 2011/65/EU (RoHS2). Finished electrical and electronic equipment products will be CE marked as required by Directive 2011/65/EU. Components may not be CE marked. Additionally, the part numbers that TE has identified as EU ELV compliant have a maximum concentration of 0.1% by weight in homogenous materials for lead, hexavalent chromium, and mercury, and 0.01% for cadmium, or qualify for an exemption to these limits as defined in the Annexes of Directive 2000/53/EC (ELV). Regarding the REACH Regulation, the information TE provides on SVHC in articles for this part number is based on the latest European Chemicals Agency (ECHA) 'Guidance on requirements for substances in articles' posted at this URL: <https://echa.europa.eu/guidance-documents/guidance-on-reach>

Compatible Parts

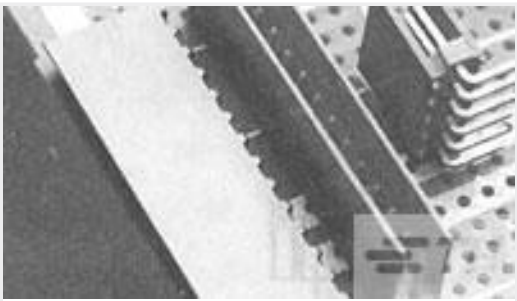


TE Part # 1982198-1  
INV.MOD.JACK,4/4POS,HANDSET SM



TE Part # 1-338084-6  
4/4 INV.MOD.JACK

Customers Also Bought



TE Part #281698-4  
HEADER HE14 RA 4 P



TE Part #1393236-4  
V23092-A1012-A201



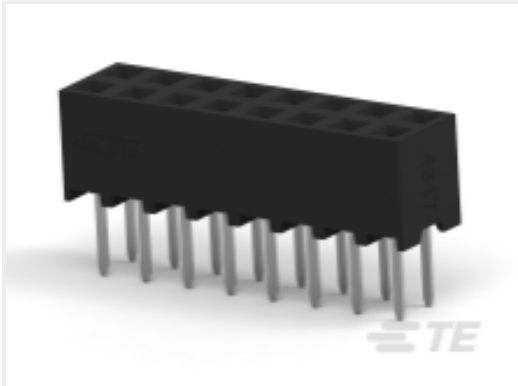
TE Part #CAT-C339-SM1  
SMD Power Resistor: 7 Watt, 200-2M Ohm



TE Part #1393243-1  
RTE24005



TE Part #1825968-2  
FSMRACDAH=6.0mm R/A Tact W/SQ ACT. & HT



TE Part #1-2314812-6  
16P,2MM,B-B,REC,DRV,T,2,0,0.1AU,TB, W/CAP



TE Part #1-2176343-9  
CRGCQ 1206 330R 1%



TE Part #4-1393789-9  
V23079G2001B301



TE Part #1513504-1  
100930LF MOLDED STAMPED ANTENNA

Documents

Product Drawings

4P.INV.MOD.JACK,PCB

English

CAD Files

3D PDF

3D

Customer View Model

ENG\_CVM\_CVM\_1-338084-3\_AB.2d\_dxf.zip

English

Customer View Model

ENG\_CVM\_CVM\_1-338084-3\_AB.3d\_igs.zip

English

Customer View Model

ENG\_CVM\_CVM\_1-338084-3\_AB.3d\_stp.zip

English

By downloading the CAD file I accept and agree to the Terms and Conditions of use.

Datasheets & Catalog Pages



1-1773464-9\_MODULAR\_JACKS\_SINGLE\_PORT\_PCB\_MOUNT

English

Product Specifications

AMP surface mount modular jack

English

Application Specification

English

Agency Approvals

UL Report

English