

# A 35 -20 - Ferrule

3200409

<https://www.phoenixcontact.com/us/products/3200409>



Please be informed that the data shown in this PDF document is generated from our online catalog. Please find the complete data in the user documentation. Our general terms of use for downloads are valid.



Ferrule, Length contact range: 20 mm, sleeve length: 20 mm, color: silver

## Your advantages

- The ferrules without plastic sleeve are made from soft tin-plated electrolytic copper

## Commercial data

Item number	3200409
Packing unit	100 pc
Minimum order quantity	100 pc
Sales key	BH34
Product key	BH3412
Catalog page	Page 480 (C-3-2019)
GTIN	4017918094058
Weight per piece (including packing)	1.076 g
Weight per piece (excluding packing)	1.01 g
Customs tariff number	85369010
Country of origin	DE

# A 35 -20 - Ferrule

3200409

<https://www.phoenixcontact.com/us/products/3200409>



## Technical data

### Notes

General	These ferrules are not included in DIN 46228-1: 1992-08
---------	---

### Product properties

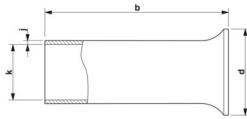
Product type	Cable end sleeve
Conductor category	stranded conductors, class 2, 5, 6 / B, C, K, M
Product property	Made from soft tin-plated electrolytic copper

### Connection data

#### Conductor connection

Conductor cross section flexible max.	35 mm <sup>2</sup>
Conductor cross section AWG max.	2
Stripping length	20 mm

### Dimensions

Dimensional drawing	
Sleeve length	20 mm
Length contact range	20 mm
Maximum stripping length	20 mm
Ferrule diameter	8.3 mm
Sleeve wall thickness	0.2 mm
Inner dimensions of the insulating collar	11 mm

### Material specifications

Color	silver-colored
Material	CU-DHP
Coating	galvanically tin-plated
Surface characteristics	Tin-plated

### Mechanical properties

#### Technical data

Sleeve length	20 mm
---------------	-------

### Environmental and real-life conditions

#### Ambient conditions

Permanent temperature	105 °C
-----------------------	--------

# A 35 -20 - Ferrule

3200409

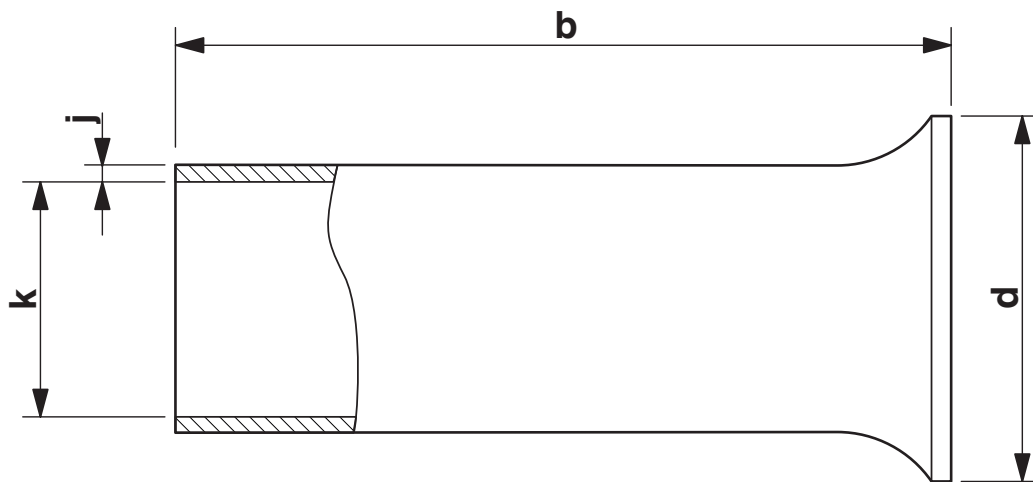
<https://www.phoenixcontact.com/us/products/3200409>



Short-term temperature	120 °C
------------------------	--------

## Drawings

Dimensional drawing



Sleeve length (b), insulating collar inner dimension (d), sleeve diameter (k), sleeve wall thickness (j)

# A 35 -20 - Ferrule

3200409

<https://www.phoenixcontact.com/us/products/3200409>



## Classifications

### ECLASS

ECLASS-11.0	27400201
ECLASS-12.0	27400201
ECLASS-13.0	27400201

### ETIM

ETIM 9.0	EC000005
----------	----------

### UNSPSC

UNSPSC 21.0	27121700
-------------	----------

# A 35 -20 - Ferrule



3200409

<https://www.phoenixcontact.com/us/products/3200409>

## Environmental product compliance

EU RoHS	
Fulfills EU RoHS substance requirements	Yes, No exemptions
China RoHS	
Environment friendly use period (EFUP)	EFUP-E
	No hazardous substances above the limits
EU REACH SVHC	
REACH candidate substance (CAS No.)	No substance above 0.1 wt%

Phoenix Contact 2025 © - all rights reserved  
<https://www.phoenixcontact.com>

Phoenix Contact USA  
586 Fulling Mill Road  
Middletown, PA 17057, United States  
(+717) 944-1300  
[info@phoenixcon.com](mailto:info@phoenixcon.com)