

FIG 1
SFM-105-02-X-SH SHOWN

NOTES:

- Ⓢ REPRESENTS A CRITICAL DIMENSION.
- MAXIMUM BURR ALLOWANCE: .0015 [0.038].
- MINIMUM PUSHOUT FORCE: .5 LB.
- NOT RECOMMENDED FOR INVERTED REFLOW SOLDER.
- FOR QUANTITIES UP TO 49 PIECES, NO LEADER, TRAILER, OR REEL WILL BE SUPPLIED.
FOR QUANTITIES OF 50-124 PIECES, NO LEADER OR TRAILER WILL BE SUPPLIED.

SFM-1XX-XX-X-XH-TR

No OF POSITIONS
-05 THRU -30, *-31 THRU *-50
(PER ROW)

LEAD STYLE
-02

PLATING SPECIFICATION
-L: 10μ" SELECTIVE GOLD IN CONTACT
AREA, MATTE TIN ON TAIL
-S: 30μ" SELECTIVE GOLD IN CONTACT
AREA, MATTE TIN ON TAIL

PACKAGE
-TR: TAPE & REEL
(SEE NOTE 5)

ROW SPECIFICATION
-SH: SINGLE HORIZONTAL
-DH: DOUBLE HORIZONTAL

(* = NOT TOOLED)

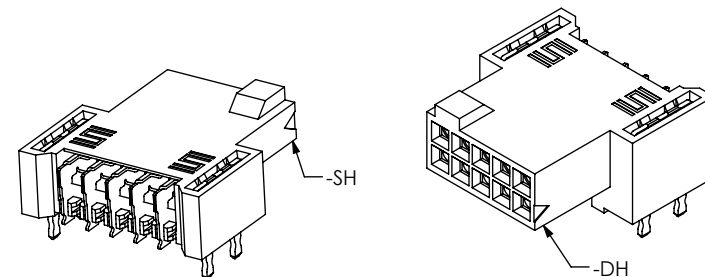


TABLE 2

ROW SPEC	"A"
-SH	.123 [3.12]
-DH	.173 [4.39]

TABLE 1

No. OF POS	⌒	—
-05 THRU -30	.004 [0.10]	.004 [0.10]
*-31 THRU *-50	.006 [0.15]	.006 [0.15]

(*= NOT TOOLED)

UNLESS OTHERWISE SPECIFIED,
DIMENSIONS ARE IN INCHES.

TOLERANCES ARE:

DECIMALS ANGLES
.XX: ±.01 [.3] 2°
.XXX: ±.005 [.13]
.XXXX: ±.0020 [.051]

PROPRIETARY NOTE

THIS DOCUMENT CONTAINS INFORMATION
CONFIDENTIAL AND PROPRIETARY TO
SAMTEC, INC. AND SHALL NOT BE REPRODUCED
OR TRANSFERRED TO OTHER DOCUMENTS OR
DISCLOSED TO OTHERS OR USED FOR ANY
PURPOSE OTHER THAN THAT WHICH IT WAS
OBTAINED WITHOUT THE EXPRESSED WRITTEN
CONSENT OF SAMTEC, INC.

MATERIAL: DO NOT SCALE DRAWING SHEET SCALE: 6:1
INSULATOR: VECTRA E130i UL 94V-0, COLOR: BLACK
CONTACT: PHOS BRONZE

samtec

520 PARK EAST BLVD, NEW ALBANY, IN 47150
PHONE: 812-944-6733 FAX: 812-948-5047
e-Mail: info@SAMTEC.com code 55322

DESCRIPTION:
.050 x .050 SOCKET STRIP ASSEMBLY

DWG. NO.
SFM-1XX-XX-X-XH-TR

BY: VICKY Z 11/22/2010 SHEET 1 OF 3

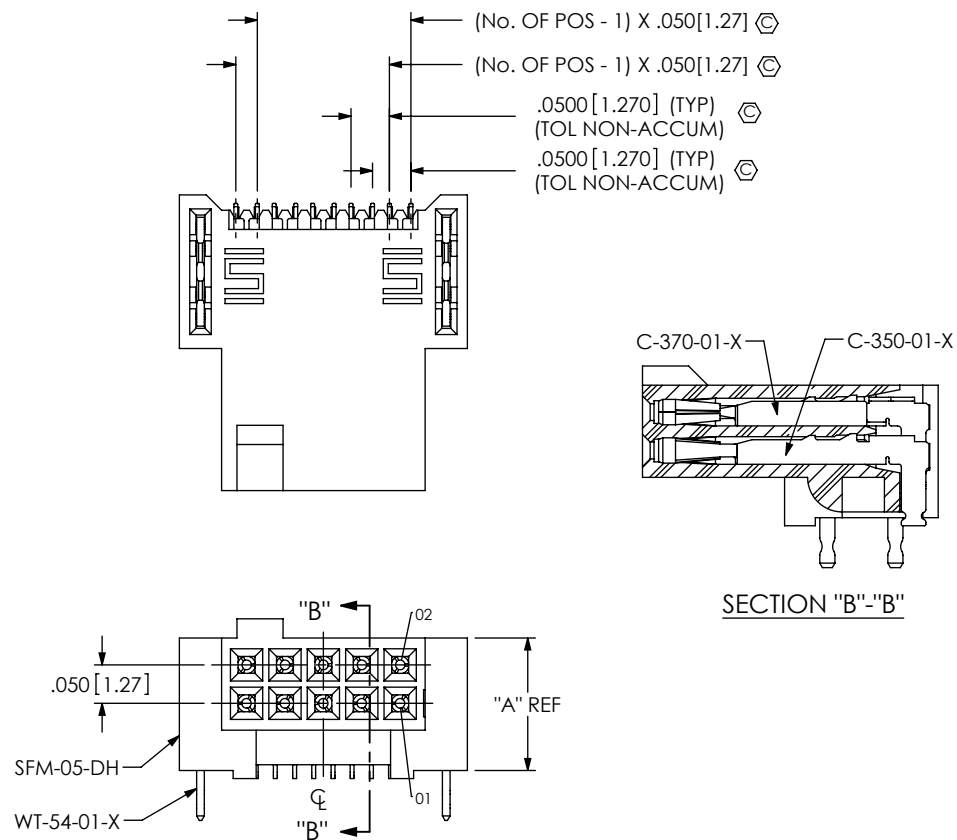
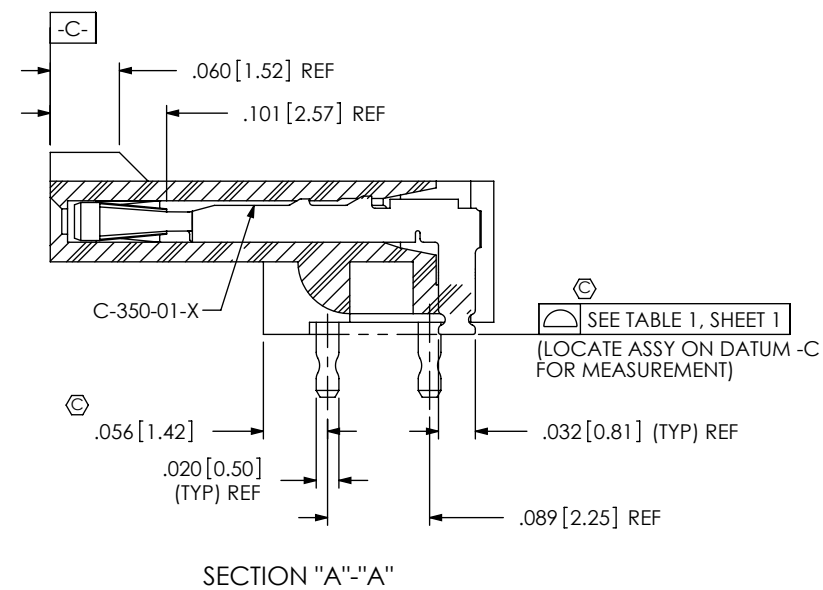


FIG 2
SFM-105-02-X-DH SHOWN
(DIFFERENT AS SHOWN, OTHERWISE SAME AS FIG 1)



PROPRIETARY NOTE
THIS DOCUMENT CONTAINS INFORMATION
CONFIDENTIAL AND PROPRIETARY TO
SAMTEC, INC. AND SHALL NOT BE REPRODUCED
OR TRANSFERRED TO OTHER DOCUMENTS OR
DISCLOSED TO OTHERS OR USED FOR ANY
PURPOSE OTHER THAN THAT WHICH IT WAS
OBTAINED WITHOUT THE EXPRESSED WRITTEN
CONSENT OF SAMTEC, INC.

DO NOT SCALE DRAWING

SHEET SCALE: 4:1

samtec

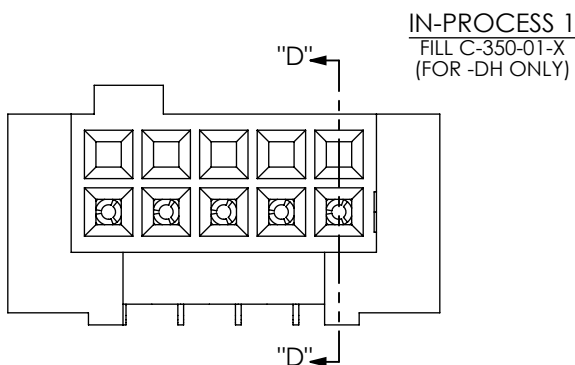
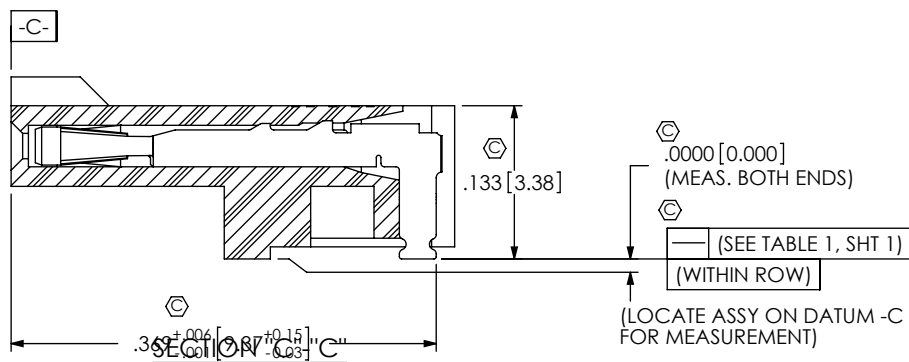
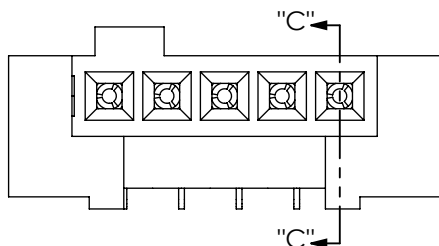
520 PARK EAST BLVD, NEW ALBANY, IN 47150
PHONE: 812-944-6733 FAX: 812-948-5047
e-Mail: info@SAMTEC.com code 55322

DESCRIPTION:
.050 x .050 SOCKET STRIP ASSEMBLY

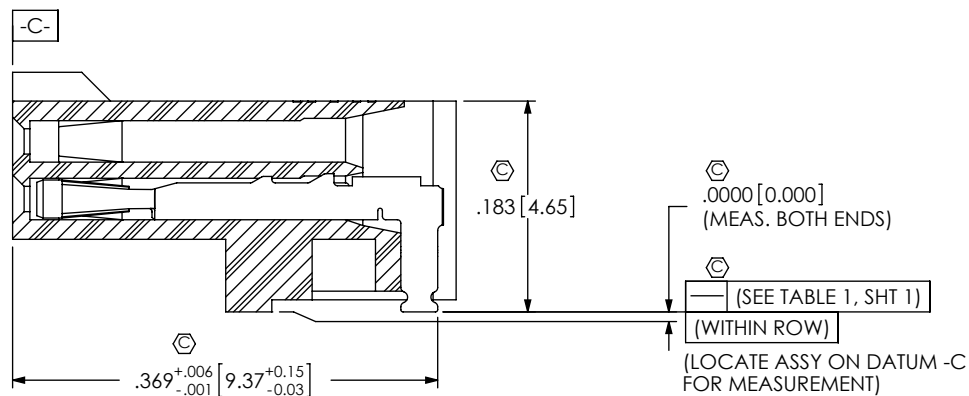
DWG. NO.
SFM-1XX-XX-X-XH-TR

BY: VICKY Z 11/22/2010 SHEET 2 OF 3

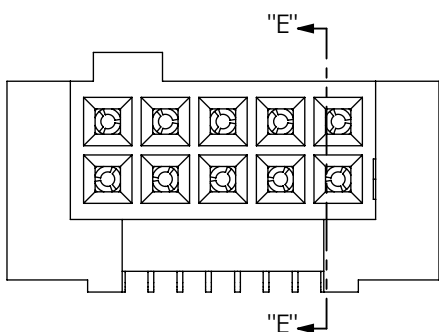
IN-PROCESS 1
FILL C-350-01-X
(FOR -SH ONLY)



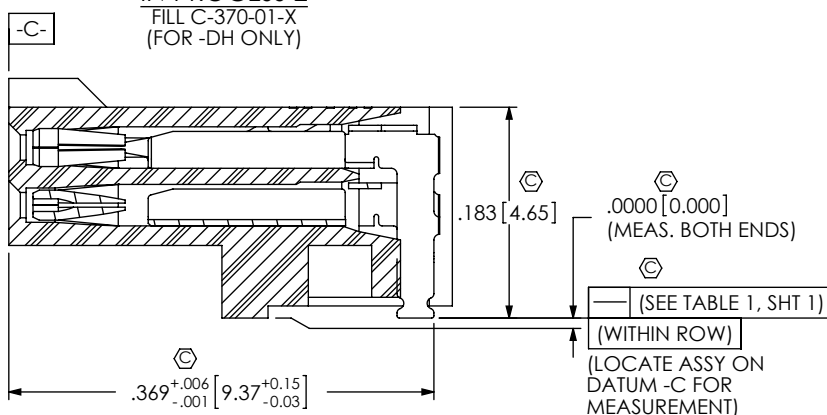
IN-PROCESS 1
FILL C-350-01-X
(FOR -DH ONLY)



SECTION "D"- "D"



IN-PROCESS 2
FILL C-370-01-X
(FOR -DH ONLY)



SECTION "E"- "E"

PROPRIETARY NOTE

THIS DOCUMENT CONTAINS INFORMATION
CONFIDENTIAL AND PROPRIETARY TO
SAMTEC, INC. AND SHALL NOT BE REPRODUCED
OR TRANSFERRED TO OTHER DOCUMENTS OR
DISCLOSED TO OTHERS OR USED FOR ANY
PURPOSE OTHER THAN THAT WHICH IT WAS
OBTAINED WITHOUT THE EXPRESSED WRITTEN
CONSENT OF SAMTEC, INC.

DO NOT SCALE DRAWING

SHEET SCALE: 6:1

samtec

520 PARK EAST BLVD, NEW ALBANY, IN 47150
PHONE: 812-944-6733 FAX: 812-948-5047
e-Mail: info@SAMTEC.com code 55322

DESCRIPTION:
.050 x .050 SOCKET STRIP ASSEMBLY

DWG. NO.
SFM-1XX-XX-X-XH-TR

BY: VICKY Z 11/22/2010 SHEET 3 OF 3