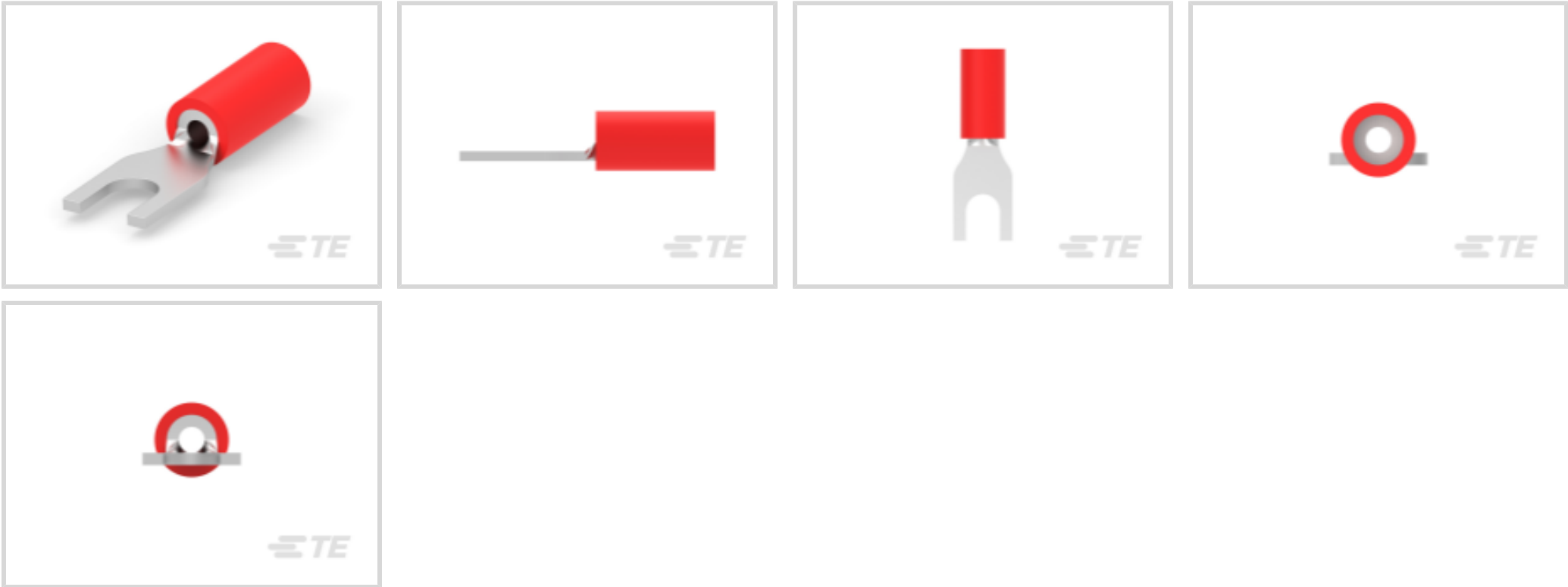




Terminals & Splices > Spade Terminals



Spade Terminal Type: **Spade Tongue Terminal**

Wire Size: **509 – 3260 CMA**

Stud Size: **#6, M3.5**

Features

Mechanical Attachment

Wire Insulation Support	With
-------------------------	------

Electrical Characteristics

Voltage Rating	600 V
----------------	-------

Industry Standards

Government Qualified Terminal	No
-------------------------------	----

Body Features

Product Weight	.155 g
Insulation Sleeve Color	Red
Stripe Color	Red

Packaging Features

Packaging Quantity	5000
Packaging Method	Tape Mounted

Product Type Features

Stud Size	#6, M3.5
Sealable	No



Wire Insulation Support Retention Type	Insulation Support
--	--------------------

Contact Features

Spade Terminal Type	Spade Tongue Terminal
Barrel Type	Closed
Terminal Orientation	Straight
Terminal Plating Material	Tin

Dimensions

Wire Size	509 – 3260 CMA
Stud Diameter	3.68 mm [.145 in]
Tongue Thickness	.79 mm [.031 in]
Product Length	21.79 mm [.858 in]
Compatible Insulation Diameter (Max)	3.56 mm [.14 in]
Compatible Insulation Diameter Range	2.67 – 3.56 mm [.105 – .14 in]

Usage Conditions

Insulation Option	Partially Insulated
-------------------	---------------------

Operation/Application

Compatible With Wire Base Material	Copper
Compatible With Wire Plating Material	Tin

Other

EU RoHS Compliance	Compliant
EU ELV Compliance	Compliant

Product Compliance

For compliance documentation, visit the product page on TE.com>

EU RoHS Directive 2011/65/EU	Compliant
EU ELV Directive 2000/53/EC	Compliant
China RoHS 2 Directive MIIT Order No 32, 2016	No Restricted Materials Above Threshold
EU REACH Regulation (EC) No. 1907/2006	Current ECHA Candidate List: JUNE 2024 (241) Candidate List Declared Against: JUNE 2024 (241) Does not contain REACH SVHC
Halogen Content	Not Low Halogen - contains Br or Cl > 900 ppm.



Solder Process Capability

Not applicable for solder process capability

Product Compliance Disclaimer

This information is provided based on reasonable inquiry of our suppliers and represents our current actual knowledge based on the information they provided. This information is subject to change. The part numbers that TE has identified as EU RoHS compliant have a maximum concentration of 0.1% by weight in homogenous materials for lead, hexavalent chromium, mercury, PBB, PBDE, DBP, BBP, DEHP, DIBP, and 0.01% for cadmium, or qualify for an exemption to these limits as defined in the Annexes of Directive 2011/65/EU (RoHS2). Finished electrical and electronic equipment products will be CE marked as required by Directive 2011/65/EU. Components may not be CE marked. Additionally, the part numbers that TE has identified as EU ELV compliant have a maximum concentration of 0.1% by weight in homogenous materials for lead, hexavalent chromium, and mercury, and 0.01% for cadmium, or qualify for an exemption to these limits as defined in the Annexes of Directive 2000/53/EC (ELV). Regarding the REACH Regulation, the information TE provides on SVHC in articles for this part number is based on the latest European Chemicals Agency (ECHA) ‘Guidance on requirements for substances in articles’ posted at this URL: <https://echa.europa.eu/guidance-documents/guidance-on-reach>

Compatible Parts



TE Part # 169404  
CERTI-LOK DIE



TE Part # 58423-1  
DIE, RBY IS9252




TE Part # 47386  
DAHT PG PIDG 26-16 ASSY

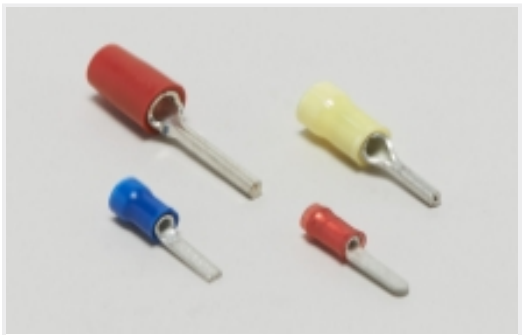


TE Part # 58433-3  
PRO CR ASSY, RBY IS9252


Also in the Series | PLASTI-GRIP



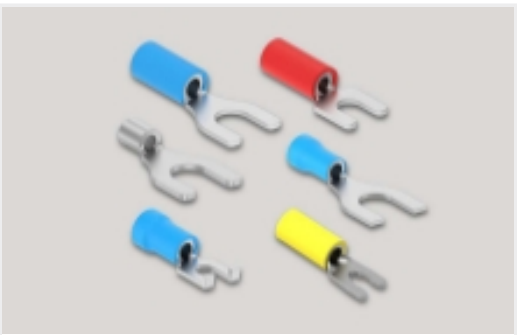
Compression Connectors(3)




Crimp Wire Pins, Tabs & Ferrules(20)



Ring Terminals(310)



Spade Terminals(159)



Splices(45)

Customers Also Bought



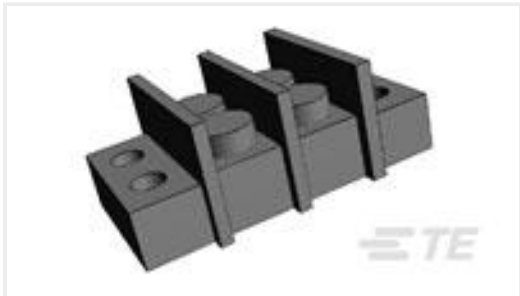
TE Part #2-2176230-6

3522 100R 5% 3W



TE Part #4-643817-2

12P MTA156 CONN ASSY 18AWG LF



TE Part #1546306-2

2P .374" DR BARRIER STRIP



TE Part #8-327043-1

PG SPD 22-16 COMM 22-18 MIL 6



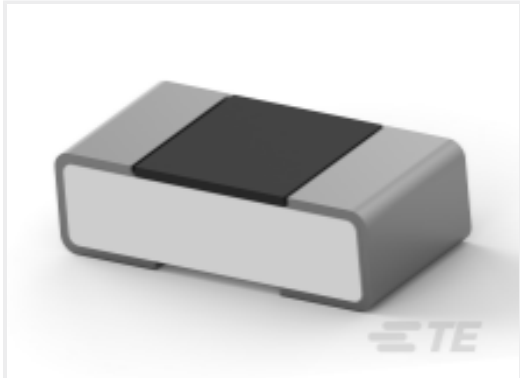
TE Part #ANT-W63-CW-RCS-SMA

Antenna 1/4 Wave R-Angle Wifi6/6E SMA



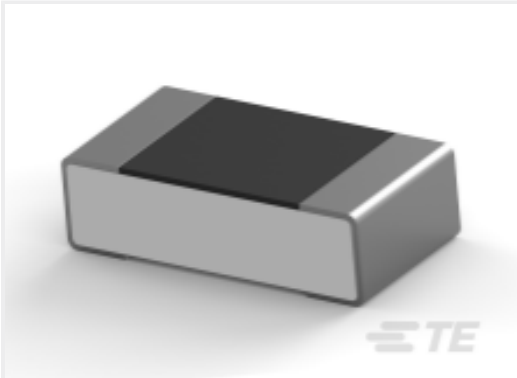
TE Part #3-2176364-5

RQ 0402 10K5 0.1% 10PPM 5K RL



TE Part #5-2176364-6

RQ 0402 17K4 0.1% 10PPM 5K RL



TE Part #8-2176370-8

RQ 0603 3K48 0.1% 10PPM 5K RL



TE Part #4-640427-8

18P MTA156 CONN ASSY 20AWG YEL



TE Part #2336582-1

PUSH-PUSH NANO SIM CONNECTOR

Documents

Product Drawings

PG SPD 22-16 COMM 22-18 MIL 6

English

CAD Files

3D PDF

3D

Customer View Model

ENG\_CVM\_CVM\_2-327043-1\_H.2d\_dxf.zip

English

Customer View Model

ENG\_CVM\_CVM\_2-327043-1\_H.3d\_igs.zip

English

Customer View Model

ENG\_CVM\_CVM\_2-327043-1\_H.3d\_stp.zip

English

By downloading the CAD file I accept and agree to the [Terms and Conditions](#) of use.

Product Specifications



Application Specification

English

Agency Approvals

UL Report

English