

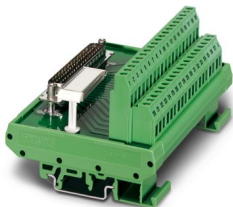
# FLKM-D37 SUB/S - Termination board



2281115

<https://www.phoenixcontact.com/us/products/2281115>

Please be informed that the data shown in this PDF document is generated from our online catalog. Please find the complete data in the user documentation. Our general terms of use for downloads are valid.



VARIOFACE module, with screw connection and D-Subminiature pin strip, for mounting on NS 35/7.5 or NS 32, 37-pos.

## Commercial data

|                                      |                    |
|--------------------------------------|--------------------|
| Item number                          | 2281115            |
| Packing unit                         | 5 pc               |
| Minimum order quantity               | 1 pc               |
| Sales key                            | C422               |
| Product key                          | CK2182             |
| Catalog page                         | Page 248 (IF-2007) |
| GTIN                                 | 4017918054564      |
| Weight per piece (including packing) | 193 g              |
| Weight per piece (excluding packing) | 182.206 g          |
| Customs tariff number                | 85369010           |
| Country of origin                    | DE                 |

# FLKM-D37 SUB/S - Termination board



2281115

<https://www.phoenixcontact.com/us/products/2281115>

## Technical data

### Product properties

|                |                  |
|----------------|------------------|
| Product type   | Interface module |
| Product family | VARIOFACE        |

#### Insulation characteristics: Air clearances and creepage distances

|                      |                       |
|----------------------|-----------------------|
| Insulation           | Functional insulation |
| Overvoltage category | II                    |
| Pollution degree     | 2                     |

### Electrical properties

|                         |           |
|-------------------------|-----------|
| Operating voltage (AC)  | ≤ 30 V AC |
| Operating voltage (DC)  | ≤ 60 V DC |
| Current (per branch)    | ≤ 2.5 A   |
| Current (Total current) | ≤ 81.4 A  |

#### Air clearances and creepage distances

|                          |                    |
|--------------------------|--------------------|
| Rated insulation voltage | 125 V              |
| Rated surge voltage      | 1.2 kV (1.2/50 μs) |

### Connection data

#### Connection 1 (control level)

|                                  |                 |
|----------------------------------|-----------------|
| Connection in acc. with standard | IEC 60807-2     |
| Connection method                | D-SUB pin strip |
| Screw thread                     | UNC 4-40        |
| Number of connections            | 1               |
| Number of positions              | 37              |
| Insertion/withdrawal cycles      | > 500           |
| Pitch                            | 2.77 mm         |

#### Connection 2

|   |  |
|---|--|
| Connection method   | Screw connection                                       |
| Stripping length  | 7 mm   |
| Screw thread  | M3   |
| Number of positions   | 38   |
| Conductor cross section rigid   | 0.2 mm² ... 4 mm²                                      |
| Conductor cross-section rigid (2 conductors with same cross section)    | 0.2 mm² ... 1.5 mm²                                    |
| Conductor cross section flexible  | 0.2 mm² ... 2.5 mm²                                    |
|   | 0.25 mm² ... 1.5 mm² (Ferrule without plastic sleeve)  |
|   | 0.25 mm² ... 2.5 mm² (Ferrule with plastic sleeve)     |
| Conductor cross section flexible (2 conductors with same cross section) | 0.2 mm² ... 1.5 mm²                                    |
|   | 0.25 mm² ... 0.75 mm² (Ferrule without plastic sleeve) |
|   | 0.5 mm² ... 0.5 mm² (TWIN ferrule with plastic sleeve) |

# FLKM-D37 SUB/S - Termination board



2281115

<https://www.phoenixcontact.com/us/products/2281115>

|                             |                   |
|-----------------------------|-------------------|
| Conductor cross section AWG | 24 ... 12         |
| Tightening torque           | 0.5 Nm ... 0.6 Nm |
| Pitch                       | 5.08 mm           |

## Signaling

|                        |    |
|------------------------|----|
| Status display present | No |
|------------------------|----|

## Dimensions

### Item dimensions

|        |           |
|--------|-----------|
| Width  | 101.15 mm |
| Height | 77 mm     |
| Depth  | 57.47 mm  |

## Material specifications

|                             |                   |
|-----------------------------|-------------------|
| Color                       | green (RAL 6021)  |
| Housing insulation material | Polyamide 6 green |

## Environmental and real-life conditions

### Ambient conditions

|  |                  |
|--|------------------|
| Degree of protection (Module)                | IP20             |
| Degree of protection (Installation location) | ≥ IP54           |
| Ambient temperature (operation)              | -20 °C ... 50 °C |
| Ambient temperature (storage/transport)      | -20 °C ... 70 °C |
| Altitude                                     | ≤ 2000 m         |

## Approvals

### UKCA

|             |                |
|-------------|----------------|
| Certificate | UKCA-compliant |
|-------------|----------------|

## Standards and regulations

### Air clearances and creepage distances

|                       |                |
|-----------------------|----------------|
| Standards/regulations | EN IEC 60664-1 |
|-----------------------|----------------|

## Mounting

|                   |                   |
|-------------------|-------------------|
| Mounting type     | DIN rail mounting |
| Mounting position | any               |

## Notes

|                    |  |
|--------------------|--|
| Notes on operation | For proper use, the specifications of the installation directive (see Downloads) must be observed. For applications or use with third-party products, the specifications, and the safety and warning instructions of the respective third-party manufacturer must also be met. |
|--------------------|--|

# FLKM-D37 SUB/S - Termination board

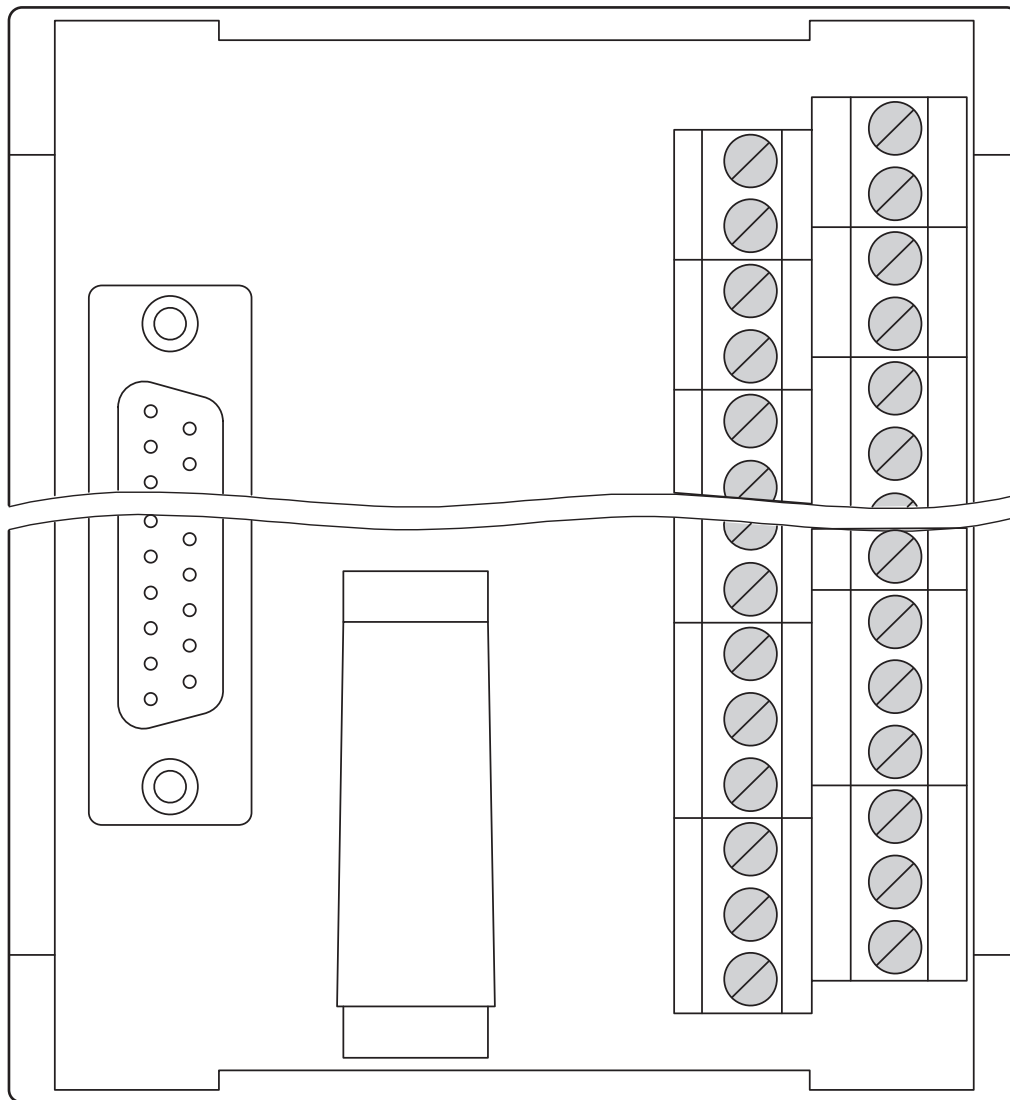


2281115

<https://www.phoenixcontact.com/us/products/2281115>

## Drawings

Schematic diagram



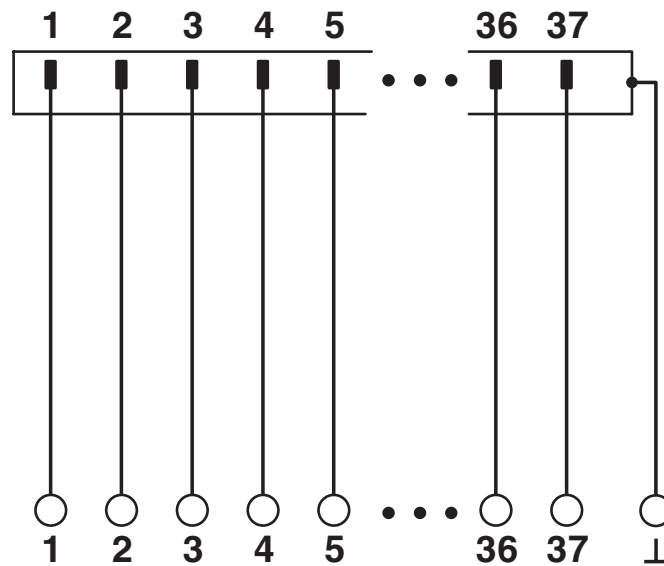
# FLKM-D37 SUB/S - Termination board

2281115

<https://www.phoenixcontact.com/us/products/2281115>



Circuit diagram



# FLKM-D37 SUB/S - Termination board



2281115

<https://www.phoenixcontact.com/us/products/2281115>

## Approvals

To download certificates, visit the product detail page: <https://www.phoenixcontact.com/us/products/2281115>

| cUL Recognized<br>Approval ID: E118976 |                       |                       |                   |                             |
|--|-----------------------|-----------------------|-------------------|-----------------------------|
|  | Nominal voltage $U_N$ | Nominal current $I_N$ | Cross section AWG | Cross section $\text{mm}^2$ |
| Field wiring                           | 125 V                 | 2.5 A                 | 30 - 12           | -                           |

| UL Recognized<br>Approval ID: E118976 |                       |                       |                   |                             |
|---------------------------------------|-----------------------|-----------------------|-------------------|-----------------------------|
|                                       | Nominal voltage $U_N$ | Nominal current $I_N$ | Cross section AWG | Cross section $\text{mm}^2$ |
| Field wiring                          | 125 V                 | 2.5 A                 | 30 - 12           | -                           |

| cULus Recognized |  |  |  |  |
|------------------|--|--|--|--|
|------------------|--|--|--|--|

# FLKM-D37 SUB/S - Termination board



2281115

<https://www.phoenixcontact.com/us/products/2281115>

## Classifications

### ECLASS

|             |          |
|-------------|----------|
| ECLASS-11.0 | 27141152 |
| ECLASS-12.0 | 27141152 |
| ECLASS-13.0 | 27141152 |

### ETIM

|          |          |
|----------|----------|
| ETIM 9.0 | EC002780 |
|----------|----------|

### UNSPSC

|             |          |
|-------------|----------|
| UNSPSC 21.0 | 39121400 |
|-------------|----------|

# FLKM-D37 SUB/S - Termination board



2281115  
<https://www.phoenixcontact.com/us/products/2281115>

## Environmental product compliance

|   |  |
|---|--|
| EU RoHS                                 |  |
| Fulfills EU RoHS substance requirements | Yes, No exemptions                       |
| China RoHS                              |  |
| Environment friendly use period (EFUP)  | EFUP-E                                   |
|   | No hazardous substances above the limits |
| EU REACH SVHC                           |  |
| REACH candidate substance (CAS No.)     | No substance above 0.1 wt%               |

Phoenix Contact 2025 © - all rights reserved  
<https://www.phoenixcontact.com>

Phoenix Contact USA  
586 Fulling Mill Road  
Middletown, PA 17057, United States  
(+717) 944-1300  
[info@phoenixcon.com](mailto:info@phoenixcon.com)