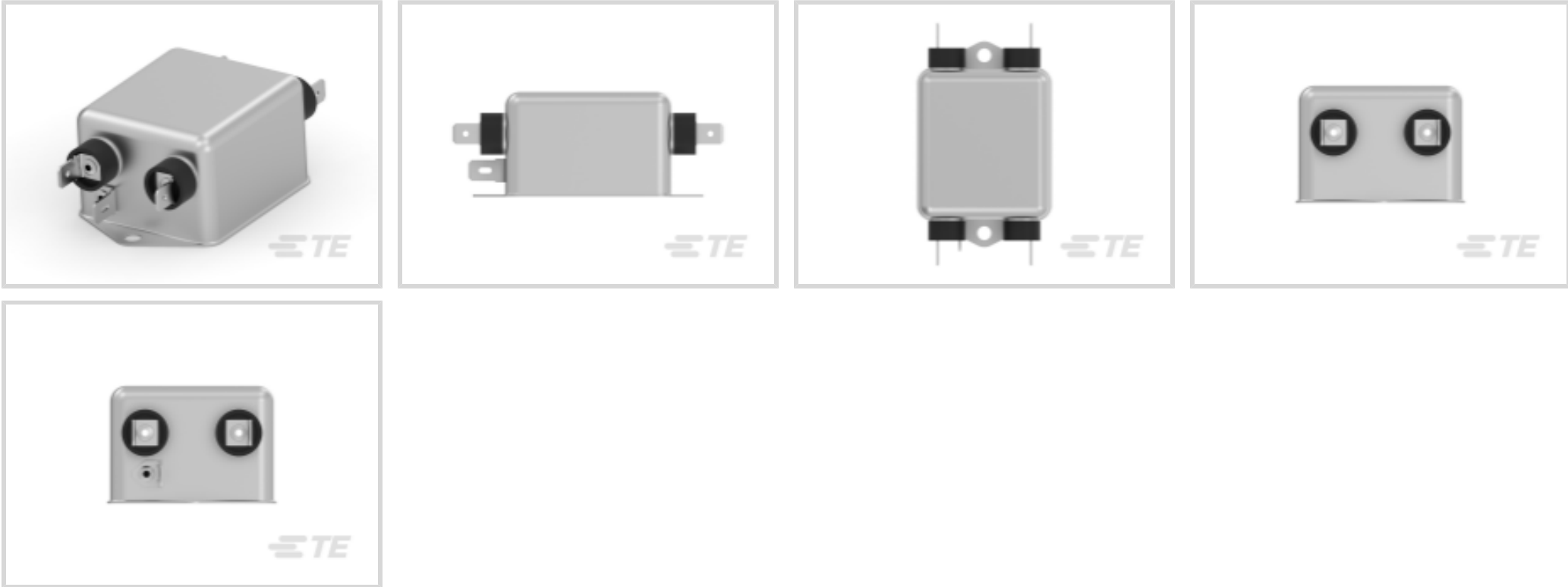




EMI & EMC Solutions > EMI Filters > Power Line Filters > Single Phase Filters > Single Phase Filters, Corcom MV Series



Current Rating: 3 A

Input Termination Type: .250" FASTON

Output Termination Type: .250" FASTON

Leakage Current (Max) (120VAC, 60Hz): .07 mA

Leakage Current (Max) (250VAC, 50Hz): .13 mA

[All Single Phase Filters, Corcom MV Series \(4\)](#)

Features

Mechanical Attachment

Panel Mount Feature Type	Flange
--------------------------	--------

Usage Conditions

Operating Temperature Range	-10 – 40 °C
-----------------------------	-------------

Product Type Features

Filtering Requirements	Filtered
Ground Choke Option	No
Input Termination Type	.250" FASTON
Output Termination Type	.250" FASTON

Electrical Characteristics

Current Rating	3 A
Leakage Current (Max) (120VAC, 60Hz)	.07 mA
Leakage Current (Max) (250VAC, 50Hz)	.13 mA
Operating Voltage	250 VAC



Other

EU RoHS Compliance	Compliant
EU ELV Compliance	Compliant

Product Compliance

For compliance documentation, visit the product page on [TE.com](#)>

EU RoHS Directive 2011/65/EU	Compliant
EU ELV Directive 2000/53/EC	Compliant
China RoHS 2 Directive MIIT Order No 32, 2016	No Restricted Materials Above Threshold
EU REACH Regulation (EC) No. 1907/2006	Current ECHA Candidate List: JUNE 2024 (241) Candidate List Declared Against: JUNE 2024 (241) Does not contain REACH SVHC
Halogen Content	Not Low Halogen - contains Br or Cl > 900 ppm.
Solder Process Capability	Not applicable for solder process capability

Product Compliance Disclaimer

This information is provided based on reasonable inquiry of our suppliers and represents our current actual knowledge based on the information they provided. This information is subject to change. The part numbers that TE has identified as EU RoHS compliant have a maximum concentration of 0.1% by weight in homogenous materials for lead, hexavalent chromium, mercury, PBB, PBDE, DBP, BBP, DEHP, DIBP, and 0.01% for cadmium, or qualify for an exemption to these limits as defined in the Annexes of Directive 2011/65/EU (RoHS2). Finished electrical and electronic equipment products will be CE marked as required by Directive 2011/65/EU. Components may not be CE marked. Additionally, the part numbers that TE has identified as EU ELV compliant have a maximum concentration of 0.1% by weight in homogenous materials for lead, hexavalent chromium, and mercury, and 0.01% for cadmium, or qualify for an exemption to these limits as defined in the Annexes of Directive 2000/53/EC (ELV). Regarding the REACH Regulation, the information TE provides on SVHC in articles for this part number is based on the latest European Chemicals Agency (ECHA) 'Guidance on requirements for substances in articles' posted at this URL: <https://echa.europa.eu/guidance-documents/guidance-on-reach>

Compatible Parts



TE Part # CAT-C8114-K1
[Single Phase Filters, Corcom K Series](#)

Also in the Series | [Corcom MV](#)



Single Phase Filters(4)

Customers Also Bought



TE Part #177901-1
POWER DBL LOCK PLUG HSG 6P



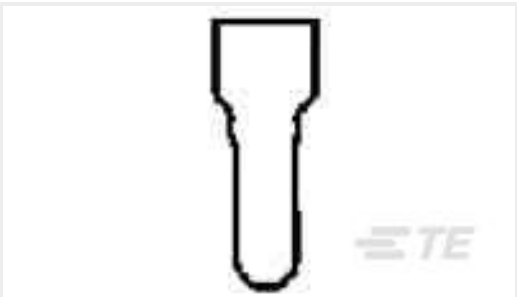
TE Part #8-1879337-8
CPF 0603 20K 1% 50PPM 1K RL



TE Part #211758-1
PLUG HSG, 12 POSN, METRIMATE



TE Part #GA10K3A1B
DISCRETE 10K OHMS, +/-0.2C FROM 0C TO 70C



TE Part #55929-1
SPLICE WIRE CE BLACK 22-10



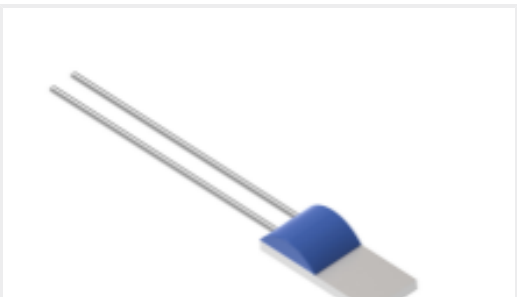
TE Part #2154829-1
High Power Inverted Thru Board Con 2 Pos



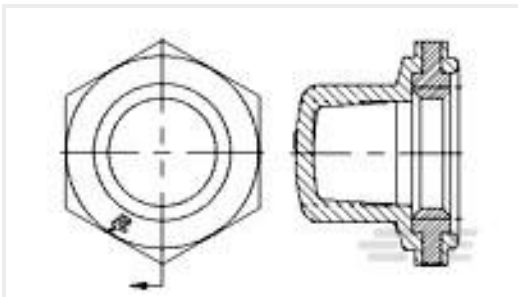
TE Part #9-1879336-1
CPF 0603 2K0 1% 50PPM 1K RL



TE Part #9-2176087-8
RP 1J 0.166W 715R 0.1% 25PPM 1K RL



TE Part #NB-PTCO-169
Pt1000, 2.0x5.0, Class C, PTFD102C1A0



TE Part #1825615-1
BP1048004=Boot, Pushbutton

Documents

CAD Files

Customer View Model

[ENG_CVM_CVM_6609056-1_C1.3d_igs.zip](#)

English

Customer View Model

[ENG_CVM_CVM_6609056-1_C1.3d_stp.zip](#)

English

Customer View Model

[ENG_CVM_CVM_6609056-1_C1.2d_dxf.zip](#)



English

3D PDF

3D

By downloading the CAD file I accept and agree to the [Terms and Conditions](#) of use.

Datasheets & Catalog Pages

1654001_CORCOM_PRODUCT_GUIDE_MV_SERIES

English

Corcom Combined Selector Charts

English

1-1654250-1_CORCOM_EMI_RFI_QRG

English