



Connectors > Automotive Connectors > Automotive Housings



Number of Positions: 4

Connector & Housing Type: **Housing for Female Terminals**

Mating Tab Width: **1.2 mm** [.047 in]

Connector System: **Wire-to-Wire**

Centerline (Pitch): **5 mm** [.197 in]

Features

Dimensions

Row-to-Row Spacing	5.5 mm[.216 in]
--------------------	-----------------

Mechanical Attachment

Mating Alignment Type	Keyed
Mating Alignment	With
Connector Mounting Type	Cable Mount (Free-Hanging)

Electrical Characteristics

Operating Voltage	12 VDC
Nominal Voltage Architecture	12 V

Housing Features

Housing Material	PBT GF
Centerline (Pitch)	5 mm[.197 in]

Contact Features

Contact Size	1.2mm
--------------	-------



Contact Type	Receptacle
Mating Tab Width	1.2 mm[.047 in]

Product Type Features

Connector Shape	Rectangular
Mixed & Hybrid Connector	No
Connector & Housing Type	Housing for Female Terminals
Connector System	Wire-to-Wire
Sealable	Yes
Primary Locking Feature	Integrated in Housing
Connector & Contact Terminates To	Wire & Cable

Configuration Features

Number of Positions	4
Number of Rows	2

Body Features

Primary Product Color	Black
Connector & Keying Code	C

Usage Conditions

Operating Temperature (Max)	125 °C[257 °F]
Operating Temperature Range	-40 – 125 °C[-40 – 257 °F]

Operation/Application

Circuit Application	Power
---------------------	-------

Other

Connector Position Assurance Capable	No
EU RoHS Compliance	Compliant
EU ELV Compliance	Compliant

Product Compliance

For compliance documentation, visit the product page on TE.com>

EU RoHS Directive 2011/65/EU	Compliant
EU ELV Directive 2000/53/EC	Compliant
China RoHS 2 Directive MIIT Order No 32, 2016	No Restricted Materials Above Threshold
EU REACH Regulation (EC) No. 1907/2006	



Current ECHA Candidate List: JUNE 2024 (241)
Candidate List Declared Against: JUNE 2024 (241)
Does not contain REACH SVHC

Halogen Content	Not Low Halogen - contains Br or Cl > 900 ppm.
Solder Process Capability	Not reviewed for solder process capability

Product Compliance Disclaimer

This information is provided based on reasonable inquiry of our suppliers and represents our current actual knowledge based on the information they provided. This information is subject to change. The part numbers that TE has identified as EU RoHS compliant have a maximum concentration of 0.1% by weight in homogenous materials for lead, hexavalent chromium, mercury, PBB, PBDE, DBP, BBP, DEHP, DIBP, and 0.01% for cadmium, or qualify for an exemption to these limits as defined in the Annexes of Directive 2011/65/EU (RoHS2). Finished electrical and electronic equipment products will be CE marked as required by Directive 2011/65/EU. Components may not be CE marked. Additionally, the part numbers that TE has identified as EU ELV compliant have a maximum concentration of 0.1% by weight in homogenous materials for lead, hexavalent chromium, and mercury, and 0.01% for cadmium, or qualify for an exemption to these limits as defined in the Annexes of Directive 2000/53/EC (ELV). Regarding the REACH Regulation, the information TE provides on SVHC in articles for this part number is based on the latest European Chemicals Agency (ECHA) 'Guidance on requirements for substances in articles' posted at this URL: <https://echa.europa.eu/guidance-documents/guidance-on-reach>

Compatible Parts



TE Part # 2356631-3
4POS,MCON 1.2,TAB HSG ASSY,SLD, COD C



TE Part # 963143-1
MQS BLINDSTOPFEN




TE Part # CAT-M4595-T273
MCON Receptacle and Tab




TE Part # 2266515-1
OCEAN_2.0_APPLICATOR-S-070F1300-RSM


Also in the Series | Superseal Pro




Automotive Connector Caps & Covers (3)



Automotive Housings(91)



Connector Backshells(13)



Connector Caps & Covers(1)



Other Automotive Connector
Accessories(1)

Customers Also Bought



TE Part #2-330648-1
PIDG 22-16 22-18 MIL R 4; TAPE



TE Part #788189-2
CPC 17-3 RCPT ASY,REV SEX



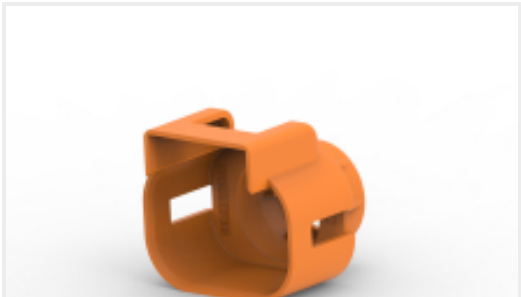
TE Part #2177090-3
STEEL,OUTER FERRULE,8MM HV,
25SQMM



TE Part #1-1633961-2
CRIMPER, INSULATION F PREMIUM



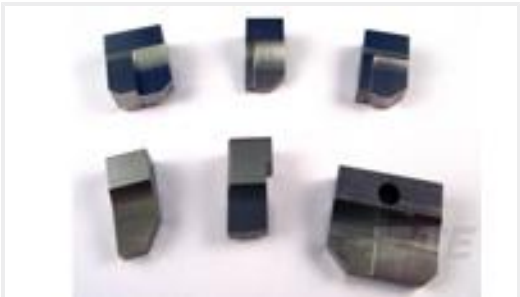
TE Part #1587940-3
CABLE SEAL RETAINER, SIZE C



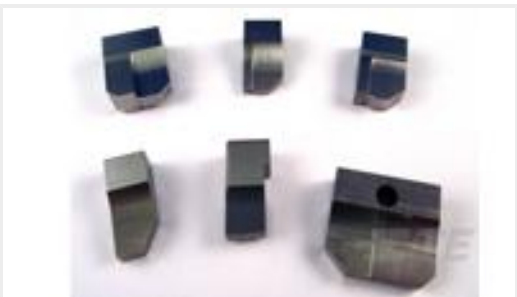
TE Part #2103013-3
CABLE SEAL RETAINER, SIZE 2, OR,
HVA280



TE Part #2208669-3
8MM HV, CONTACT,ASSY



TE Part #4-1633932-0
ANVIL, COMBINATION



TE Part #464291-5
ANVIL, SAND-BLASTED 12-10



TE Part #YHV280-2PM-P-4MM-B
HVA280-2phm,pass,4sqmm,Key B

Documents

Product Drawings
4POS,MCON 1.2,REC HSG ASSY,SLD,COD C
English
4POS,MCON 1.2,REC HSG ASSY,SLD,COD C
English

CAD Files
3D PDF
3D



Customer View Model

[ENG_CVM_CVM_2356607-3_C.2d_dxf.zip](#)

English

Customer View Model

[ENG_CVM_CVM_2356607-3_C.3d_igs.zip](#)

English

Customer View Model

[ENG_CVM_CVM_2356607-3_C.3d_stp.zip](#)

English

By downloading the CAD file I accept and agree to the [Terms and Conditions](#) of use.

Product Specifications

[Application Specification](#)

English

[Application Specification](#)

English