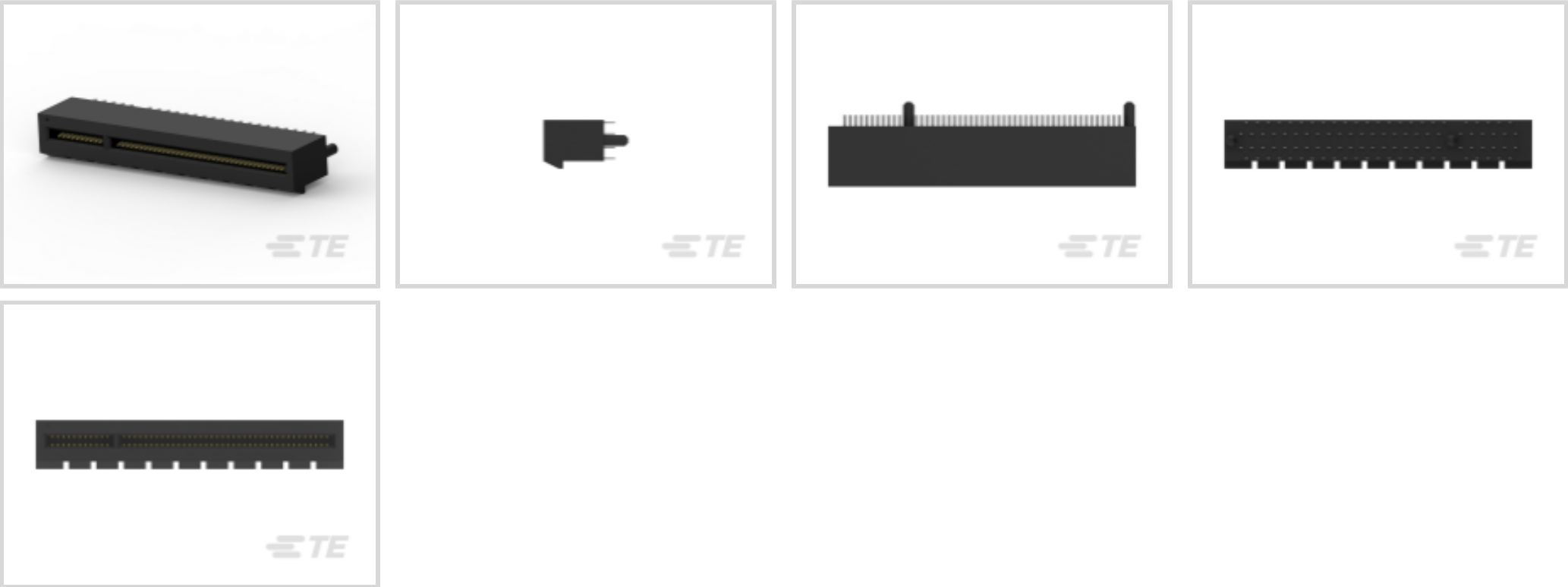




TE Internal #: 1871058-3
Board-to-Board, 98 Position, 1 mm [.039 in] Centerline, Vertical,
Black, Height 11 mm [.433 in], Width 8.88 mm [.35 in], PCI & PCI
Express Connectors
[View on TE.com >](#)

Connectors > PCB Connectors > Card Edge Connectors > PCI & PCI Express Connectors



Connector System: **Board-to-Board**
Number of Positions: **98**
PCI Generation: **2 & 3**
Centerline (Pitch): **1 mm [.039 in]**
Termination Post & Tail Length: **2 mm [.079 in]**

Features

Mechanical Attachment

Connector Mounting Type	Board Mount
-------------------------	-------------

Electrical Characteristics

Operating Voltage	50 VAC
-------------------	--------

Packaging Features

Packaging Method	Tray, Box & Tray
Packaging Quantity	40

Dimensions

PCB Thickness (Recommended)	1.6 mm[.063 in]
PCB Thickness (Accepted)	1.57 mm[.062 in]
Connector Length	56 mm[2.205 in]
Connector Height	11 mm[.433 in]
Connector Width	8.88 mm[.35 in]

Body Features

Product Weight	2.863 g
----------------	---------



Primary Product Color

Black

Contact Features

Contact Current Rating (Max)	1.1 A
PCB Contact Termination Area Plating Material Thickness	.5 µm
Contact Mating Area Plating Material	Gold
Contact Base Material	Copper Alloy
PCB Contact Termination Area Plating Material	Tin
PCB Contact Termination Area Plating Material Finish	Matte
	30 µin

Termination Features

Termination Method to PCB	Through Hole - Press-Fit
Termination Post & Tail Length	2 mm[.079 in]

Housing Features

Housing Material	High Temperature Thermoplastic
Centerline (Pitch)	1 mm[.039 in]

Industry Standards

Bus Type	PCI Express
PCI Generation	2 & 3

Configuration Features

Number of PCB Mount Retention Features	2
Number of Positions	98
PCB Mount Orientation	Vertical
Ejector	Without

Product Type Features

Connector & Contact Terminates To	Printed Circuit Board
Connector System	Board-to-Board

Usage Conditions

Operating Temperature Range	-40 – 85 °C[-40 – 185 °F]
-----------------------------	---------------------------

Operation/Application

Circuit Application	Signal
---------------------	--------

Other

--	--



EU RoHS Compliance	Compliant
EU ELV Compliance	Compliant

Product Compliance

For compliance documentation, visit the product page on TE.com>

EU RoHS Directive 2011/65/EU	Compliant
EU ELV Directive 2000/53/EC	Compliant
China RoHS 2 Directive MIIT Order No 32, 2016	No Restricted Materials Above Threshold
EU REACH Regulation (EC) No. 1907/2006	Current ECHA Candidate List: JUNE 2024 (241) Candidate List Declared Against: JUNE 2024 (241) Does not contain REACH SVHC
Halogen Content	Not Low Halogen - contains Br or Cl > 900 ppm.
Solder Process Capability	Not applicable for solder process capability

Product Compliance Disclaimer

This information is provided based on reasonable inquiry of our suppliers and represents our current actual knowledge based on the information they provided. This information is subject to change. The part numbers that TE has identified as EU RoHS compliant have a maximum concentration of 0.1% by weight in homogenous materials for lead, hexavalent chromium, mercury, PBB, PBDE, DBP, BBP, DEHP, DIBP, and 0.01% for cadmium, or qualify for an exemption to these limits as defined in the Annexes of Directive 2011/65/EU (RoHS2). Finished electrical and electronic equipment products will be CE marked as required by Directive 2011/65/EU. Components may not be CE marked. Additionally, the part numbers that TE has identified as EU ELV compliant have a maximum concentration of 0.1% by weight in homogenous materials for lead, hexavalent chromium, and mercury, and 0.01% for cadmium, or qualify for an exemption to these limits as defined in the Annexes of Directive 2000/53/EC (ELV). Regarding the REACH Regulation, the information TE provides on SVHC in articles for this part number is based on the latest European Chemicals Agency (ECHA) 'Guidance on requirements for substances in articles' posted at this URL: <https://echa.europa.eu/guidance-documents/guidance-on-reach>

Compatible Parts



TE Part # 5-2337939-4
PCIe GEN4 CON,SMT,164POS,30u",
MYLAR,HT

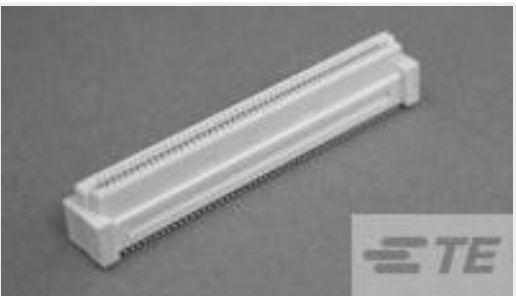


TE Part # 1734774-1
PCI EXP 3.1L 36 POS WHT G/F

Customers Also Bought



TE Part #1-2176070-3
3521 33R 1% 2W



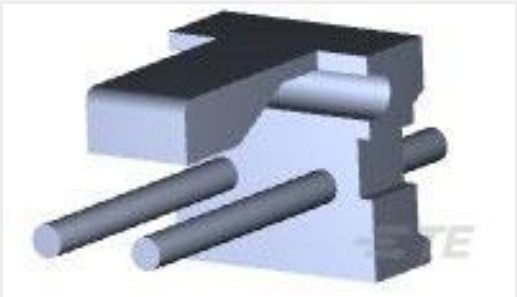
TE Part #7-5179180-3
0.8FH,R09H.5,080,30/Sn,TR,SC



TE Part #2007263-1
SFP+ 1x2 Cage Assembly



TE Part #292304-1
STD USB TYPE B, R/A, T/H



TE Part #640388-2
02P MTA156 HDR ASSY RN STR F/L



TE Part #2057417-1
IMP100S,R,RA4P8C,UG,39



TE Part #5787745-3
USB A R/A STAK ASSY THRU HOLE



TE Part #1-5406203-2
MJ,ASSY,4P,8POS,CAT5,PNL TABS,.1S /T



TE Part #4-644759-2
12P MTA156 HDR ASSY STR LF



TE Part #2204167-1
MBXLE R/A RCPT,A/C PASS THRU 4ACP+12S+3P

Documents

Product Drawings

PCI EXPRESS CONN. EON TYPE, 98

English

CAD Files

3D PDF

3D

Customer View Model

ENG_CVM_CVM_1871058-3_E.2d_dxf.zip

English

Customer View Model

ENG_CVM_CVM_1871058-3_E.3d_igs.zip

English

Customer View Model

ENG_CVM_CVM_1871058-3_E.3d_stp.zip

English

By downloading the CAD file I accept and agree to the [Terms and Conditions](#) of use.

Datasheets & Catalog Pages



Pressfit Card Edge Connector for PCI Express Applications Datasheet 2-1773443-3

English

Product Specifications

Product Specification

English

Product Specification

Japanese