



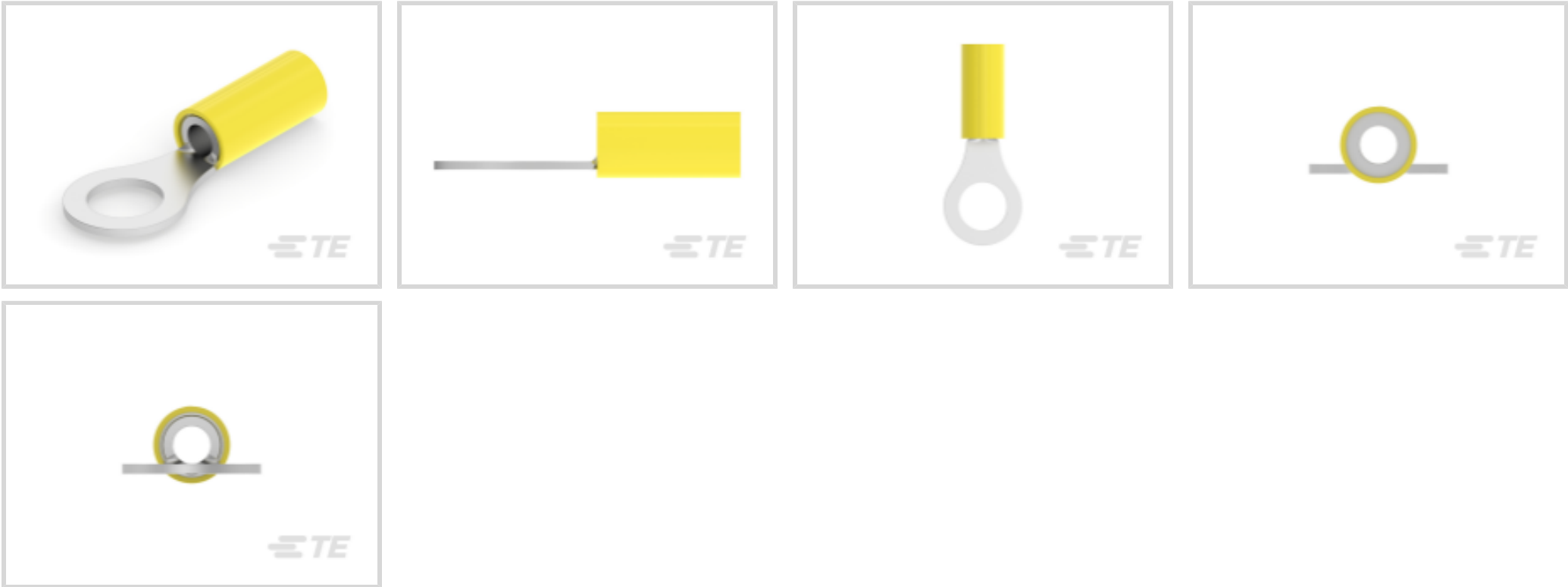
PIDG

TE Internal #: 2-320576-2

Closed Ring Tongue Terminal, 12 AWG, 5/16 / M8 Stud, 7.92 mm [.312 in] Stud Diameter, Closed Barrel, Straight, Tin Plating, Partially Insulated, PIDG

[View on TE.com >](#)

Terminals & Splices > Ring Terminals > PIDG Ring Tongue Terminals



Ring Terminal Product Type: Closed Ring Tongue Terminal

Wire Size: 6654 CMA

Stud Size: M8, 5/16

[All PIDG Ring Tongue Terminals \(410\)](#)

Features

Configuration Features

Number of Holes	1
-----------------	---

Mechanical Attachment

Wire Insulation Support	With
-------------------------	------

Electrical Characteristics

Voltage Rating	300 V
----------------	-------

Industry Standards

Government Qualified Terminal	Yes
-------------------------------	-----

Body Features

Product Weight	2.752 g
Stripe Color	Yellow

Packaging Features

Packaging Quantity	500
Packaging Method	Box



Contact Features

Military Part Class	Class I
Barrel Type	Closed
Terminal Orientation	Straight
Terminal Plating Material	Tin

Product Type Features

Ring Terminal Product Type	Closed Ring Tongue Terminal
Stud Size	M8, 5/16
Sealable	No
Wire Insulation Support Retention Type	Insulation Restriction

Dimensions

Wire Size	6654 CMA
Stud Diameter	7.92 mm[.312 in]
Tongue Thickness	.79 mm[.031 in]
Product Length	35.36 mm[1.392 in]
Compatible Insulation Diameter (Max)	5.08 mm[.2 in]
Compatible Insulation Diameter Range	2.41 – 5.08 mm[.095 – .2 in]

Usage Conditions

Insulation Option	Partially Insulated
-------------------	---------------------

Operation/Application

Compatible With Wire Base Material	Copper
Compatible With Wire Plating Material	Tin

Other

EU RoHS Compliance	Compliant
EU ELV Compliance	Compliant

Product Compliance

For compliance documentation, visit the product page on TE.com>

EU RoHS Directive 2011/65/EU	Compliant
EU ELV Directive 2000/53/EC	Compliant
China RoHS 2 Directive MIIT Order No 32, 2016	No Restricted Materials Above Threshold
EU REACH Regulation (EC) No. 1907/2006	Current ECHA Candidate List: JUNE 2024 (241)



Candidate List Declared Against: JAN 2021 (211)
Does not contain REACH SVHC

Halogen Content	BFR/CFR/PVC Free, but Br/Cl >900 ppm in other sources.
Solder Process Capability	Not applicable for solder process capability

Product Compliance Disclaimer

This information is provided based on reasonable inquiry of our suppliers and represents our current actual knowledge based on the information they provided. This information is subject to change. The part numbers that TE has identified as EU RoHS compliant have a maximum concentration of 0.1% by weight in homogenous materials for lead, hexavalent chromium, mercury, PBB, PBDE, DBP, BBP, DEHP, DIBP, and 0.01% for cadmium, or qualify for an exemption to these limits as defined in the Annexes of Directive 2011/65/EU (RoHS2). Finished electrical and electronic equipment products will be CE marked as required by Directive 2011/65/EU. Components may not be CE marked. Additionally, the part numbers that TE has identified as EU ELV compliant have a maximum concentration of 0.1% by weight in homogenous materials for lead, hexavalent chromium, and mercury, and 0.01% for cadmium, or qualify for an exemption to these limits as defined in the Annexes of Directive 2000/53/EC (ELV). Regarding the REACH Regulation, the information TE provides on SVHC in articles for this part number is based on the latest European Chemicals Agency (ECHA) 'Guidance on requirements for substances in articles' posted at this URL: <https://echa.europa.eu/guidance-documents/guidance-on-reach>

Compatible Parts

TE Part # 59239-4
HHHT PIDG PG 12-10 ASSY

TE Part # 59824-1
TETRA-CRIMP PIDG PG FASTON 22-10 ASSY

TE Part # 58423-1
DIE, RBY IS9252

TE Part # 58433-3
PRO CR ASSY, RBY IS9252

TE Part # 679300-1
1210 PIDG CRIMP HEAD

TE Part # 169404
CERTI-LOK DIE

TE Part # 2063030-1
SDE DIESET, RBY, UL

TE Part # 47808-6
DIES PIDG 12-10 DIE SET

Also in the Series | PIDG



Compression Connectors(17)



Crimp Wire Pins, Tabs & Ferrules(41)



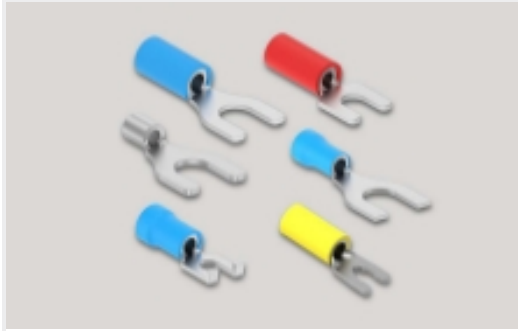
Knife Disconnects(11)



Quick Disconnects(38)



Ring Terminals(588)



Spade Terminals(228)

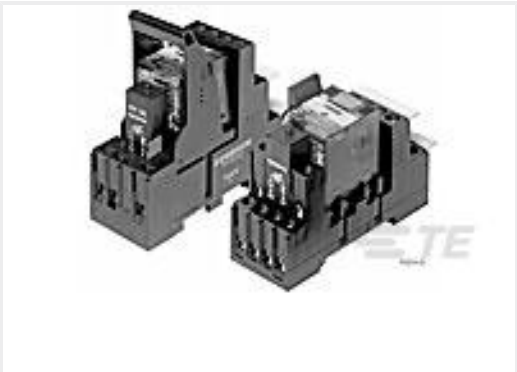


Special Purpose Terminals(1)



Splices(41)

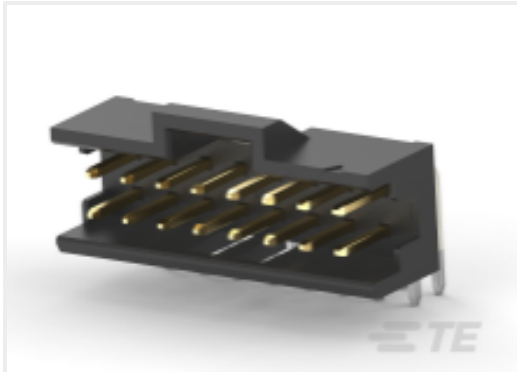
Customers Also Bought



TE Part #8-1415534-9
PT2L7LC4



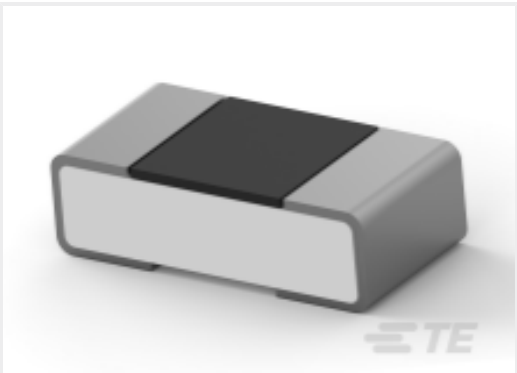
TE Part #1676335-3
RN 0805 40K2 0.1% 10PPM 5KRL



TE Part #1-2823411-4
14P,2MM,PL HDR,DRRT,2.8,0.76AU,TB



TE Part #324911-1
TERMINAL,SOLIS R 12-10 6 T&R



TE Part #1-2176364-8
RQ 0402 6K98 0.1% 10PPM 5K RL



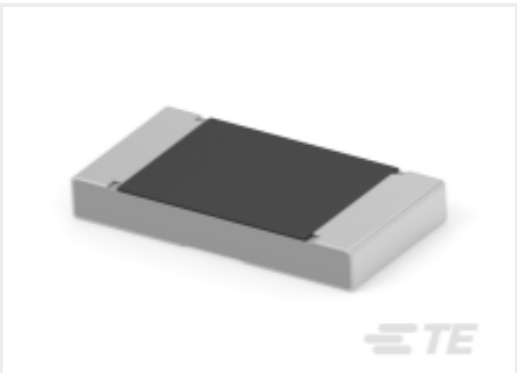
TE Part #1-2176162-0
UPF25 0.1% 5PPM 5K0



TE Part #6-1879026-8
YR1 0.1% 374K



TE Part #1-826656-3
13P AMPMODU II STIFT LEI



TE Part #3-2176524-7
3503G 2B 1K3 1% 1K RL



TE Part #ANT-GNRM-L15A-3
Antenna GNSS L1L5 Ext Mag RG174 3M SMA

Documents



Product Drawings

TERMINAL,PIDG R IR 12 5/16

English

CAD Files

3D PDF

3D

Customer View Model

ENG_CVM_CVM_2-320576-2_S.2d_dxf.zip

English

Customer View Model

ENG_CVM_CVM_2-320576-2_S.3d_igs.zip

English

Customer View Model

ENG_CVM_CVM_2-320576-2_S.3d_stp.zip

English

By downloading the CAD file I accept and agree to the [Terms and Conditions](#) of use.

Agency Approvals

CSA Certificate

English