

HDP24-24-9SN

✓ ACTIVE

DEUTSCH | DEUTSCH HDP, DEUTSCH HD

TE Internal #: HDP24-24-9SN

9 Position Housing, Housing for Female Terminals, Wire-to-Panel, Sealable, Black, Wire & Cable, Power, Panel Mount, Hybrid

[View on TE.com >](#)



Connectors > Automotive Connectors > Automotive Housings > DEUTSCH HDP20 Housings



Number of Positions: 9

Connector & Housing Type: **Housing for Female Terminals**

Mating Pin Diameter: 2.4 mm, 3.6 mm, 5.7 mm [.225 in, .142 in, .094 in]

Connector System: **Wire-to-Panel**

Sealable: **Yes**

[All DEUTSCH HDP20 Housings \(357\)](#)

Features

Housing Features

Housing Material	PA 66 GF
------------------	----------

Industry Standards

IP Rating	IP67
UL Flammability Rating	UL 94V-0

Dimensions

Compatible Insulation Diameter Range	3.6 – 5.2 mm[.14 – .204 in]
Product Width	47.6 mm[1.87 in]
Product Length	50.8 mm[2 in]
Connector Height	41.9 mm[1.65 in]

Packaging Features

Packaging Quantity	150
Packaging Method	Tray

Mechanical Attachment

Strain Relief	Without
Terminal Position Assurance	No
Mating Alignment Type	Polarizing Slot
Mating Alignment	With



Connector Mounting Type	Panel Mount
Other	
Serviceable	Yes
Connector Position Assurance Capable	No
EU RoHS Compliance	Compliant
EU ELV Compliance	Compliant
Electrical Characteristics	
Operating Voltage	250 VDC
Nominal Voltage Architecture	250 V
Body Features	
Cable Exit Angle	180°
Primary Product Color	Black
Contact Features	
Contact Size	Size 8, Size 4, Size 12
Contact Type	Socket
Mating Pin Diameter	2.4 mm, 3.6 mm, 5.7 mm[.225 in][.142 in][.094 in]
Contact Current Rating (Max)	100 A, 25 A, 60 A
Product Type Features	
Mixed & Hybrid Connector	Yes
Connector Shape	Circular
Connector & Housing Type	Housing for Female Terminals
Connector System	Wire-to-Panel
Sealable	Yes
Primary Locking Feature	Contact Retainer
Connector & Contact Terminates To	Wire & Cable
Configuration Features	
Blank Cavity Position	0
Connector Seal Code	N Seal
Number of Positions	9
Usage Conditions	
Operating Temperature (Max)	125 °C[257 °F]



Operating Temperature Range

-55 – 125 °C[-67 – 257 °F]

Operation/Application

Circuit Application	Power
---------------------	-------

Product Compliance

For compliance documentation, visit the product page on TE.com>

EU RoHS Directive 2011/65/EU	Compliant
EU ELV Directive 2000/53/EC	Compliant
China RoHS 2 Directive MIIT Order No 32, 2016	No Restricted Materials Above Threshold
EU REACH Regulation (EC) No. 1907/2006	Current ECHA Candidate List: JUNE 2024 (241) Candidate List Declared Against: JUNE 2024 (241) SVHC > Threshold: Octamethylcyclotetrasiloxane (D4) (.5% in Component Part) Dodecamethylcyclohexasiloxane (D6) (.5% in Component Part) Decamethylcyclopentasiloxane (D5) (.5% in Component Part) Article Safe Usage Statements: Wash thoroughly after handling. Recycle if possible and dispose of the article by following all applicable governmental regulations relevant to your geographic location.
Halogen Content	Not Low Halogen - contains Br or Cl > 900 ppm.
Solder Process Capability	Not reviewed for solder process capability

Product Compliance Disclaimer

This information is provided based on reasonable inquiry of our suppliers and represents our current actual knowledge based on the information they provided. This information is subject to change. The part numbers that TE has identified as EU RoHS compliant have a maximum concentration of 0.1% by weight in homogenous materials for lead, hexavalent chromium, mercury, PBB, PBDE, DBP, BBP, DEHP, DIBP, and 0.01% for cadmium, or qualify for an exemption to these limits as defined in the Annexes of Directive 2011/65/EU (RoHS2). Finished electrical and electronic equipment products will be CE marked as required by Directive 2011/65/EU. Components may not be CE marked. Additionally, the part numbers that TE has identified as EU ELV compliant have a maximum concentration of 0.1% by weight in homogenous materials for lead, hexavalent chromium, and mercury, and 0.01% for cadmium, or qualify for an exemption to these limits as defined in the Annexes of Directive 2000/53/EC (ELV). Regarding the REACH Regulation, the information TE provides on SVHC in articles for this part number is based on the latest European Chemicals Agency (ECHA) ‘Guidance on requirements for substances in articles’ posted at this URL: <https://echa.europa.eu/guidance-documents/guidance-on-reach>

Compatible Parts

HDP24-24-9SN

9 Position Housing, Housing for Female Terminals, Wire-to-Panel, Sealable, Black,
Wire & Cable, Power, Panel Mount, Hybrid



TE Part # 1062-12-0144
SOC, SF, SIZE 12, 12-14, AU/SN



TE Part # 114008-ZZ
EXT TOOL, SIZE 8, 8-10 AWG, N, GRN



TE Part # 1062-12-0222
SOC, SF, SIZE 12, 10, NI/NI



TE Part # 114009-ZZ
EXT TOOL, SIZE 4, 6 AWG, N, WHT



TE Part # HD30-24BT-BK
BOOT, 24SZ, ST, BLK



TE Part # 24-D-PUNCH
D-HOLE PUNCH, SIZE 24



TE Part # CAT-H3930-PC8382
Plug Protective Caps - DEUTSCH HD30



TE Part # 16-04477
GASKET, 24SZ, BLK, HD30



TE Part # CAT-H396-RC8382
Receptacle Protective Caps —
DEUTSCH HDP20



TE Part # 114010-ZZ
EXT TOOL, SIZE 12, 12 AWG, N, YEL




TE Part # HD30-24BT
BOOT, 24SZ, ST, GRY



TE Part # HD30-24BT-90-BK
BOOT, 24SZ, RA, BLK



TE Part # CAT-D48-ST273
DEUTSCH Solid Contacts



TE Part # 62036-40
62036 HDP24 FLANGE-SEAL silicone
60shore



TE Part # 1062-12-0166
SOC, SF, SIZE 12, 12-14, NI/SN



TE Part # CAT-D48-SP729
DEUTSCH Sealing Plugs



TE Part # CAT-H396-CH8172
DEUTSCH HDP20 Housings

Also in the Series | **DEUTSCH HD**



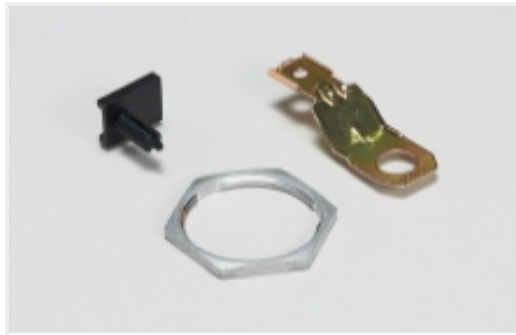
Automotive Connector Caps & Covers (4)



Automotive Housings(357)

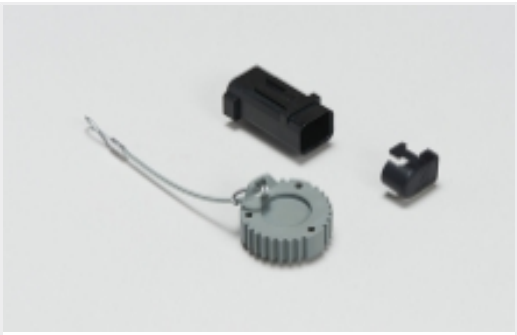


Connector Strain Relief(5)



Other Automotive Connector Accessories(6)

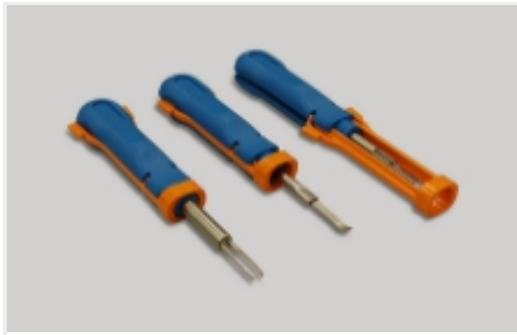
Also in the Series | **DEUTSCH HDP**



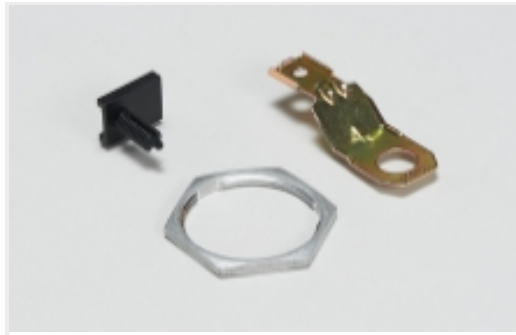
Automotive Connector Caps & Covers (4)



Automotive Housings(357)



Insertion & Extraction Tools(11)



Other Automotive Connector Accessories(6)

Customers Also Bought



TE Part #CAT-H396-CH8172
DEUTSCH HDP20 Housings



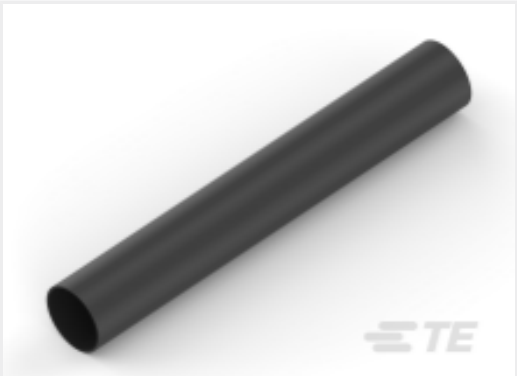
TE Part #CAT-D48-ST273
DEUTSCH Solid Contacts



TE Part #114019-ZZ
SEALING PLUG, SIZE 4, WHT



TE Part #1-2176442-2
HCF80 75W 680R 5% LEAD



TE Part #NB17012001
DWP-125-1-1/2-0-STK



TE Part #1-1546310-2
12P.563" DR BARRIER STRIP



TE Part #1241872-1
JPT A REC 2.8 Contact SWS Sn

Documents

Product Drawings
REC, 9P, BLK, N, 4/8/12, S

English

CAD Files
3D PDF

3D



Customer View Model

[ENG_CVM_CVM_HDP24-24-9SN_A.2d_dxf.zip](#)

English

Customer View Model

[ENG_CVM_CVM_HDP24-24-9SN_A.3d_igs.zip](#)

English

Customer View Model

[ENG_CVM_CVM_HDP24-24-9SN_A.3d_stp.zip](#)

English

By downloading the CAD file I accept and agree to the [Terms and Conditions](#) of use.

Datasheets & Catalog Pages

[DEUTSCH HD30 & HDP20 CONNECTOR SERIES](#)

English

[ICT Terminals and Connectors Catalogue](#)

English

[CONNECTOR SELECTOR](#)

English

Product Specifications

[Application Specification](#)

English

Agency Approvals

[UL Report](#)

English