



EMI & EMC Solutions > EMI Filters > Power Line Filters > Single Phase Filters > Single Phase Filters, Corcom K Series



Current Rating: 3 A

Input Termination Type: IEC

Output Termination Type: .250" FASTON

Leakage Current (Max) (120VAC, 60Hz): .4 mA

Leakage Current (Max) (250VAC, 50Hz): .7 mA

[All Single Phase Filters, Corcom K Series \(34\)](#)

Features

Usage Conditions

Operating Temperature Range	-10 – 40 °C
-----------------------------	-------------

Mechanical Attachment

Product Mount Type	Panel Mount
--------------------	-------------

Product Type Features

Filtering Requirements	Filtered
Ground Choke Option	No
Input Termination Type	IEC
Output Termination Type	.250" FASTON

Electrical Characteristics

Current Rating	3 A
Leakage Current (Max) (120VAC, 60Hz)	.4 mA
Leakage Current (Max) (250VAC, 50Hz)	.7 mA
Operating Voltage	250 VAC

Other

EU RoHS Compliance	Compliant with Exemptions
EU ELV Compliance	Compliant



Product Compliance

For compliance documentation, visit the product page on TE.com>

EU RoHS Directive 2011/65/EU	Compliant with Exemptions
EU ELV Directive 2000/53/EC	Compliant
China RoHS 2 Directive MIIT Order No 32, 2016	Restricted Materials Above Threshold
EU REACH Regulation (EC) No. 1907/2006	Current ECHA Candidate List: JUNE 2024 (241) Candidate List Declared Against: JUNE 2024 (241) SVHC > Threshold: Pb (3.1% in Component Part) Article Safe Usage Statements: Do not eat, drink or smoke when using this product. Wash thoroughly after handling. Recycle if possible and dispose of the article by following all applicable governmental regulations relevant to your geographic location.
Halogen Content	Not Low Halogen - contains Br or Cl > 900 ppm.
Solder Process Capability	Not applicable for solder process capability

Product Compliance Disclaimer

This information is provided based on reasonable inquiry of our suppliers and represents our current actual knowledge based on the information they provided. This information is subject to change. The part numbers that TE has identified as EU RoHS compliant have a maximum concentration of 0.1% by weight in homogenous materials for lead, hexavalent chromium, mercury, PBB, PBDE, DBP, BBP, DEHP, DIBP, and 0.01% for cadmium, or qualify for an exemption to these limits as defined in the Annexes of Directive 2011/65/EU (RoHS2). Finished electrical and electronic equipment products will be CE marked as required by Directive 2011/65/EU. Components may not be CE marked. Additionally, the part numbers that TE has identified as EU ELV compliant have a maximum concentration of 0.1% by weight in homogenous materials for lead, hexavalent chromium, and mercury, and 0.01% for cadmium, or qualify for an exemption to these limits as defined in the Annexes of Directive 2000/53/EC (ELV). Regarding the REACH Regulation, the information TE provides on SVHC in articles for this part number is based on the latest European Chemicals Agency (ECHA) ‘Guidance on requirements for substances in articles’ posted at this URL: <https://echa.europa.eu/guidance-documents/guidance-on-reach>

Compatible Parts



Also in the Series | Corcom K



Single Phase Filters(34)

Customers Also Bought



TE Part #6609048-3
3EQ8=F7260 S0



TE Part #1-338095-8
18P. MICRO-MATCH COSI HSG



TE Part #2027395-3
T9SV1K15-12S



TE Part #102107-1
MOD IV PIN LP



TE Part #1622400-1
LR1 1% 24R



TE Part #1-6609974-8
110FCD10BS = F7763S



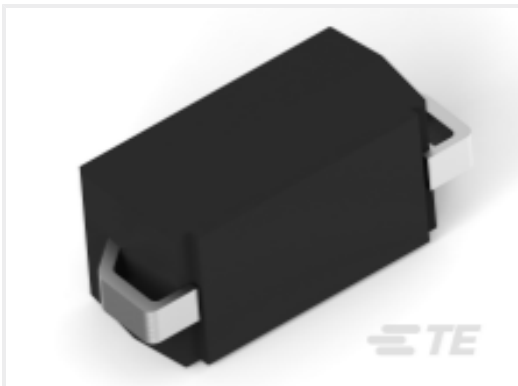
TE Part #1-1437667-0
4DB-P107-04=4DB ASSEMBLY



TE Part #3-1393123-9
KHU-17D11-110=KH



TE Part #3-1393766-4
R10-E1Y2-J2.5K=R10



TE Part #1-2176324-1
SMV 3W 680K 5%

Documents

Product Drawings
3VK7M=F7138 S0

English

CAD Files
Customer View Model
ENG_CVM_CVM_6609028-8_B1.3d_stp.zip

English

Customer View Model



[ENG_CVM_CVM_6609028-8_B1.2d_dxf.zip](#)

English

Customer View Model

[ENG_CVM_CVM_6609028-8_B1.3d_igs.zip](#)

English

3D PDF

3D

By downloading the CAD file I accept and agree to the [Terms and Conditions](#) of use.

Datasheets & Catalog Pages

[1654001_CORCOM_PRODUCT_GUIDE_K_SERIES](#)

English

Corcom Combined Selector Charts

English

[1-1654250-1_CORCOM_EMI_RFI_QRG](#)

English