



LX3302A 180-Degree Rotary Inductive Position Sensor Nano Kit (LXK3302AR010) Basic User Guide

Note the following details of the code protection feature on Microchip products:

- Microchip products meet the specifications contained in their particular Microchip Data Sheet.
- Microchip believes that its family of products is secure when used in the intended manner, within operating specifications, and under normal conditions.
- Microchip values and aggressively protects its intellectual property rights. Attempts to breach the code protection features of Microchip product is strictly prohibited and may violate the Digital Millennium Copyright Act.
- Neither Microchip nor any other semiconductor manufacturer can guarantee the security of its code. Code protection does not mean that we are guaranteeing the product is “unbreakable”. Code protection is constantly evolving. Microchip is committed to continuously improving the code protection features of our products.

This publication and the information herein may be used only with Microchip products, including to design, test, and integrate Microchip products with your application. Use of this information in any other manner violates these terms. Information regarding device applications is provided only for your convenience and may be superseded by updates. It is your responsibility to ensure that your application meets with your specifications. Contact your local Microchip sales office for additional support or, obtain additional support at <https://www.microchip.com/en-us/support/design-help/client-support-services>.

THIS INFORMATION IS PROVIDED BY MICROCHIP "AS IS". MICROCHIP MAKES NO REPRESENTATIONS OR WARRANTIES OF ANY KIND WHETHER EXPRESS OR IMPLIED, WRITTEN OR ORAL, STATUTORY OR OTHERWISE, RELATED TO THE INFORMATION INCLUDING BUT NOT LIMITED TO ANY IMPLIED WARRANTIES OF NON-INFRINGEMENT, MERCHANTABILITY, AND FITNESS FOR A PARTICULAR PURPOSE, OR WARRANTIES RELATED TO ITS CONDITION, QUALITY, OR PERFORMANCE.

IN NO EVENT WILL MICROCHIP BE LIABLE FOR ANY INDIRECT, SPECIAL, PUNITIVE, INCIDENTAL, OR CONSEQUENTIAL LOSS, DAMAGE, COST, OR EXPENSE OF ANY KIND WHATSOEVER RELATED TO THE INFORMATION OR ITS USE, HOWEVER CAUSED, EVEN IF MICROCHIP HAS BEEN ADVISED OF THE POSSIBILITY OR THE DAMAGES ARE FORESEEABLE. TO THE FULLEST EXTENT ALLOWED BY LAW, MICROCHIP'S TOTAL LIABILITY ON ALL CLAIMS IN ANY WAY RELATED TO THE INFORMATION OR ITS USE WILL NOT EXCEED THE AMOUNT OF FEES, IF ANY, THAT YOU HAVE PAID DIRECTLY TO MICROCHIP FOR THE INFORMATION.

Use of Microchip devices in life support and/or safety applications is entirely at the buyer's risk, and the buyer agrees to defend, indemnify and hold harmless Microchip from any and all damages, claims, suits, or expenses resulting from such use. No licenses are conveyed, implicitly or otherwise, under any Microchip intellectual property rights unless otherwise stated.

For information regarding Microchip's Quality Management Systems, please visit www.microchip.com/quality.

Trademarks

The Microchip name and logo, the Microchip logo, Adaptec, AnyRate, AVR, AVR logo, AVR Freaks, BesTime, BitCloud, CryptoMemory, CryptoRF, dsPIC, flexPWR, HELDO, IGLOO, JukeBlox, KeeLoq, Kleer, LANCheck, LinkMD, maxStylus, maxTouch, MediaLB, megaAVR, Microsemi, Microsemi logo, MOST, MOST logo, MPLAB, OptoLyzer, PIC, picoPower, PICSTART, PIC32 logo, PolarFire, Prochip Designer, QTouch, SAM-BA, SenGenuity, SpyNIC, SST, SST Logo, SuperFlash, Symmetricom, SyncServer, Tachyon, TimeSource, tinyAVR, UNI/O, Vectron, and XMEGA are registered trademarks of Microchip Technology Incorporated in the U.S.A. and other countries.

AgileSwitch, APT, ClockWorks, The Embedded Control Solutions Company, EtherSynch, Flashtec, Hyper Speed Control, HyperLight Load, IntelliMOS, Libero, motorBench, mTouch, Powermite 3, Precision Edge, ProASIC, ProASIC Plus, ProASIC Plus logo, Quiet-Wire, SmartFusion, SyncWorld, Temux, TimeCesium, TimeHub, TimePictra, TimeProvider, TrueTime, WinPath, and ZL are registered trademarks of Microchip Technology Incorporated in the U.S.A.

Adjacent Key Suppression, AKS, Analog-for-the-Digital Age, Any Capacitor, AnyIn, AnyOut, Augmented Switching, BlueSky, BodyCom, CodeGuard, CryptoAuthentication, CryptoAutomotive, CryptoCompanion, CryptoController, dsPICDEM, dsPICDEM.net, Dynamic Average Matching, DAM, ECAN, Espresso T1S, EtherGREEN, GridTime, IdealBridge, In-Circuit Serial Programming, ICSP, INICnet, Intelligent Parallelizing, Inter-Chip Connectivity, JitterBlocker, Knob-on-Display, maxCrypto, maxView, memBrain, Mindi, MiWi, MPASM, MPF, MPLAB Certified logo, MPLIB, MPLINK, MultiTRAK, NetDetach, NVM Express, NVMe, Omniscent Code Generation, PICDEM, PICDEM.net, Pickit, PICTail, PowerSmart, PureSilicon, QMatrix, REAL ICE, Ripple Blocker, RTAX, RTG4, SAM-ICE, Serial Quad I/O, simpleMAP, SimpliPHY, SmartBuffer, SmartHLS, SMART-I.S., storClad, SQL, SuperSwitcher, SuperSwitcher II, Switchtec, SynchroPHY, Total Endurance, TSHARC, USBCheck, VariSense, VectorBlox, VeriPHY, ViewSpan, WiperLock, XpressConnect, and ZENA are trademarks of Microchip Technology Incorporated in the U.S.A. and other countries.

SQTP is a service mark of Microchip Technology Incorporated in the U.S.A.

The Adaptec logo, Frequency on Demand, Silicon Storage Technology, Symmcom, and Trusted Time are registered trademarks of Microchip Technology Inc. in other countries.

GestIC is a registered trademark of Microchip Technology Germany II GmbH & Co. KG, a subsidiary of Microchip Technology Inc., in other countries.

All other trademarks mentioned herein are property of their respective companies.

© 2022, Microchip Technology Incorporated and its subsidiaries.

All Rights Reserved.

ISBN: 978-1-5224-9773-8



LX3302A 180-DEGREE ROTARY INDUCTIVE POSITION SENSOR NANO KIT BASIC USER GUIDE

Table of Contents

Preface	3
Chapter 1. Product Overview	
1.1 Introduction	9
1.2 LX3302A 180-Degree Rotary Inductive Position Sensor Nano Kit Overview	9
1.3 Quick Start Guide	10
Chapter 2. Technical Information	
2.1 System Operation	11
2.2 Details of Connectors on Sensor Board	12
2.3 Inductive Sensor Board Typical Characteristics	14
2.4 Restoring the MCU to the Factory Default	14
Worldwide Sales and Service	15

NOTES:

Preface

NOTICE TO CUSTOMERS

All documentation becomes dated, and this basic user guide is no exception. Microchip tools and documentation are constantly evolving to meet customer needs, so some actual dialogs and/or tool descriptions may differ from those in this document. Please refer to our website (www.microchip.com) to obtain the latest documentation available.

Documents are identified with a “DS” number. This number is located on the bottom of each page, in front of the page number. The numbering convention for the DS number is “DSXXXXXXXA”, where “XXXXXXX” is the document number and “A” is the revision level of the document.

For the most up-to-date information on development tools, see the MPLAB® IDE online help. Select the Help menu, and then Topics to open a list of available online help files.

INTRODUCTION

This chapter contains general information that will be useful to know before using the LX3302A 180-Degree Rotary Inductive Position Sensor Nano Kit. Items discussed in this chapter include:

- [Document Layout](#)
- [Conventions Used in this Guide](#)
- [The Microchip Website](#)
- [Customer Support](#)
- [Document Revision History](#)

DOCUMENT LAYOUT

This document describes how to use the LX3302A 180-Degree Rotary Inductive Position Sensor Nano Kit as a development tool to emulate and debug firmware on a target board. The manual layout is as follows:

- **Chapter 1. “Product Overview”** – This chapter describes the most important features of the LX3302A 180-Degree Rotary Inductive Position Sensor Nano Kit, as well as the contents of the kit and a step-by-step Quick Start Guide.
- **Chapter 2. “Technical Information”** – This chapter provides technical details important for the operation of the LX3302A 180-Degree Rotary Inductive Position Sensor Nano Kit.

CONVENTIONS USED IN THIS GUIDE

This manual uses the following documentation conventions:

DOCUMENTATION CONVENTIONS

Description	Represents	Examples
Arial font:		
Italic characters	Referenced books	<i>MPLAB® IDE User's Guide</i>
	Emphasized text	...is the <i>only</i> compiler...
Initial caps	A window	the Output window
	A dialog	the Settings dialog
	A menu selection	select Enable Programmer
Quotes	A field name in a window or dialog	"Save project before build"
Underlined, Italic text with right angle bracket	A menu path	<u><i>File>Save</i></u>
Bold characters	A dialog button	Click OK
	A tab	Click the Power tab
N'Rnnnn	A number in verilog format, where N is the total number of digits, R is the radix and n is a digit.	4'b0010, 2'hF1
Text in angle brackets < >	A key on the keyboard	Press <Enter>, <F1>
Courier New font:		
Plain Courier New	Sample source code	#define START
	Filenames	autoexec.bat
	File paths	c:\mcc18\h
	Keywords	_asm, _endasm, static
	Command-line options	-Opa+, -Opa-
	Bit values	0, 1
	Constants	0xFF, 'A'
Italic Courier New	A variable argument	<i>file.o</i> , where <i>file</i> can be any valid filename
Square brackets []	Optional arguments	mcc18 [options] <i>file</i> [options]
Curly brackets and pipe character: { }	Choice of mutually exclusive arguments; an OR selection	errorlevel {0 1}
Ellipses...	Replaces repeated text	var_name [, var_name...]
	Represents code supplied by user	void main (void) { ... }

THE MICROCHIP WEBSITE

Microchip provides online support via our website at www.microchip.com. This website is used as a means to make files and information easily available to customers. Accessible by using your favorite Internet browser, the website contains the following information:

- **Product Support** – Data sheets and errata, application notes and sample programs, design resources, user's guides and hardware support documents, latest software releases and archived software
- **General Technical Support** – Frequently Asked Questions (FAQs), technical support requests, online discussion groups, Microchip consultant program member listing
- **Business of Microchip** – Product selector and ordering guides, latest Microchip press releases, listing of seminars and events, listings of Microchip sales offices, distributors and factory representatives

CUSTOMER SUPPORT

Users of Microchip products can receive assistance through several channels:

- Distributor or Representative
- Local Sales Office
- Embedded System Engineer (ESE)
- Technical Support

Customers should contact their distributor, representative or field application engineer (FAE) for support. Local sales offices are also available to help customers. A listing of sales offices and locations is included in the back of this document.

Technical support is available through the website at:

<http://www.microchip.com/support>.

DOCUMENT REVISION HISTORY

Revision A (February 2022)

- Initial release of this document.

NOTES:

Chapter 1. Product Overview

1.1 INTRODUCTION

This chapter provides an overview of the LX3302A 180-Degree Rotary Inductive Position Sensor Nano Kit, as well as a Quick Start Guide.

The LX3302A 180-Degree Rotary Inductive Position Sensor Nano Kit combines a 180-degree rotary position sensor with a Microchip PIC[®] microcontroller. The kit provides higher accuracy, is immune to motor noise and does not need a magnetic target, thus accelerating sensor development.

The LX3302A 180-Degree Rotary Inductive Position Sensor Nano Kit has many of the features of the Microchip PRO kits, but in a smaller footprint. The Rotary Nano Kit, along with the IPCE software allow evaluating, auto-calibrating and customizing the LX3302A sensor to suit the application. The PIC18F microcontroller can then be repurposed to be used in the end-application, further accelerating product development.

1.2 LX3302A 180-DEGREE ROTARY INDUCTIVE POSITION SENSOR NANO KIT OVERVIEW

1.2.1 LX3302A 180-Degree Rotary Inductive Position Sensor Nano Kit Features

The key features of the LX3302A 180-Degree Rotary Inductive Position Sensor Nano Kit are:

- A complete Sensor with Programmer solution (sensor IC and PIC18F TSS)
 - The Rotary sensor featured with the LXX3302AR010 kit is great for Knobs
- Fully IPCE compatible: Programming, Calibration and Auto-Detection in the IPCE software
- MPLAB[®] IDE customizable: PICKit[™] programmer connector available

1.2.2 LX3302A 180-Degree Rotary Inductive Position Sensor Nano Kit Contents

The LX3302A 180-Degree Rotary Inductive Position Sensor Nano Kit contains the following items:

- Inductive position sensor PCB with target assembly
- USB power cable
- The IPCE software can be downloaded from www.microchip.com

Figure 1-1 shows an example of the LX3302A 180-Degree Rotary Inductive Position Sensor Nano Kit.

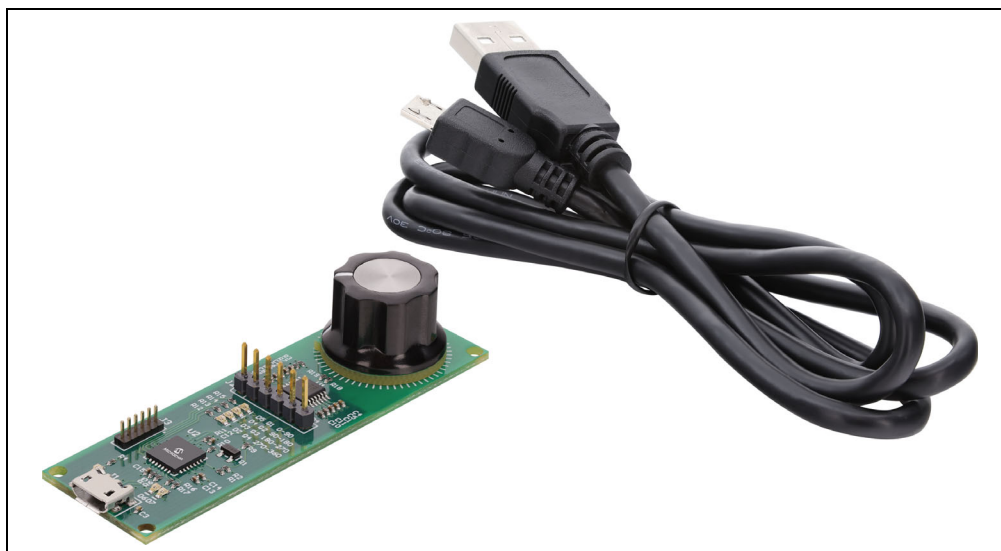


FIGURE 1-1: LX3302A 180-Degree Rotary Inductive Position Sensor Nano Kit (LXK3302AR010).

1.3 QUICK START GUIDE

The Rotary Nano Kit includes an Integrated Programming and Calibration Environment (IPCE) to facilitate system calibration and configuration. The integrated programming environment contains an EEPROM programming tool and data measuring system.

Follow these steps to install and start operating the LX3302A 180-Degree Rotary Inductive Position Sensor Nano Kit:

1. To download the IPCE software, go to www.microchip.com and navigate to the LX3302A inductive sensor product page. The download link to the Microchip IPCE 2.x Installer can be found under the “*Embedded Software*” section.
2. Download and install the program, then open IPCE.
3. Connect the USB cable included in the LX3302A 180-Degree Rotary Inductive Position Sensor Nano Kit.
4. As the LX3302A 180-Degree Rotary Inductive Position Sensor Nano Kit comes with preloaded firmware in the PIC18F MCU and Golden parameters into the inductive sensor IC, the IPCE will automatically detect the sensor and start displaying the live data of the sensor in IPCE.

Chapter 2. Technical Information

This chapter explains the key technical aspects of the LX3302A 180-Degree Rotary Inductive Position Sensor Nano Kit. It begins with a brief discussion of the system operation of the Rotary Nano Kit, features a picture of the board and connector pinout instructions, followed by an example diagram of linearity, and concludes with brief instructions on how to restore the MCU to factory defaults.

2.1 SYSTEM OPERATION

The LX3302A 180-Degree Rotary Inductive Position Sensor Nano Kit has been factory calibrated and is ready to use. Default operation requires a +5V DC power source which can be supplied either by an external DC power supply or the IPCE programmer connected to PC via USB.

The Rotary Nano Kit constitutes of a main sensor board and a movable target PCB. The main sensor board contains two oscillator coils (OSC1 and OSC2) and two pickup coils (CL1 and CL2). The IC energizes the two oscillator coils. The position of the target varies the reception of the two pickup coils relative to each other. The IC demodulates the two received signals and generates an output signal representative of the relative difference between the CL1 and CL2 signals (see [Figure 2-1](#)).

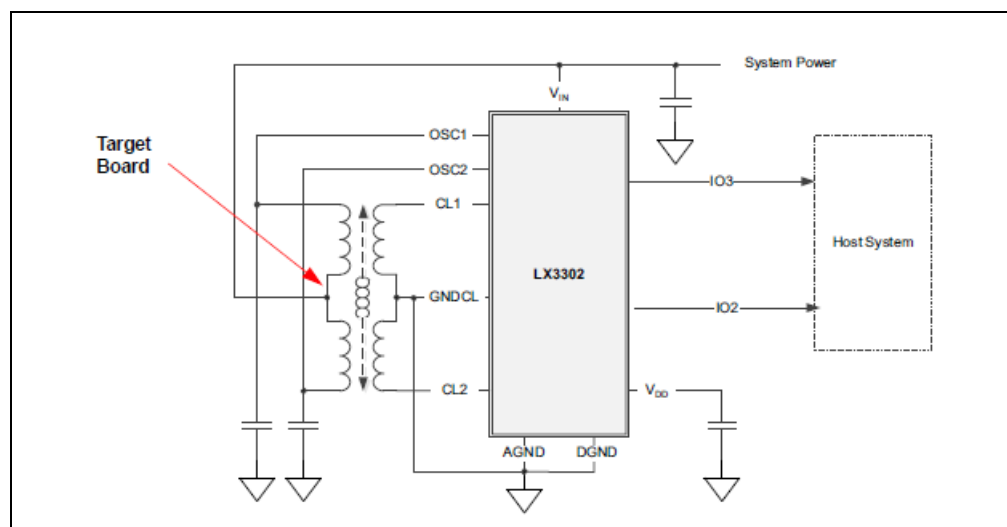


FIGURE 2-1: Inductive Sensor Operation Principle.

2.2 DETAILS OF CONNECTORS ON SENSOR BOARD

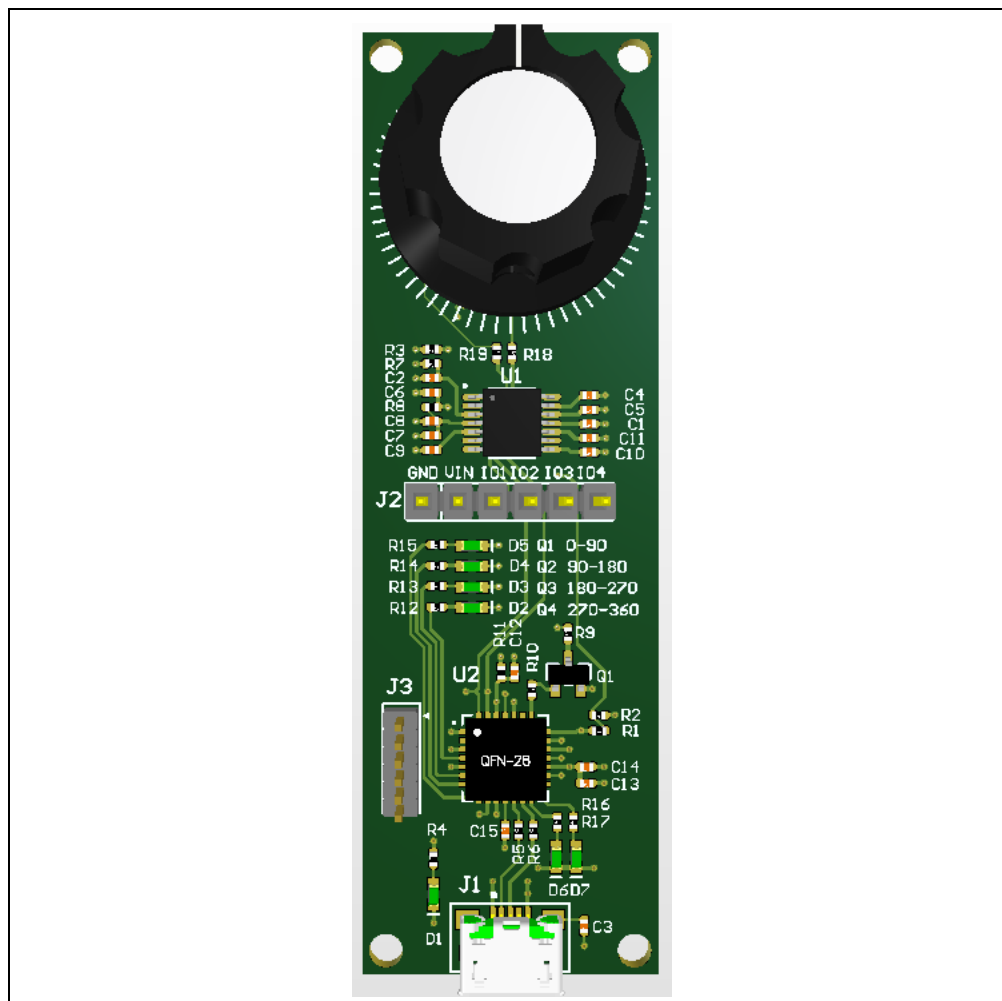


FIGURE 2-2: LX3302A 180-Degree Rotary Inductive Position Sensor Nano Board.

The LX3302A 180-Degree Rotary Inductive Position Sensor Nano Kit features three different connectors numbered J1 to J3 (see [Figure 2-2](#)):

- J1 is a USB 2.0 Micro-B cable connector which connects the Rotary Nano Kit to a PC
- J2 is a vertical test pin connector which allows reading out various types of output of the Linear Nano Kit
- J3 is a vertical test pin connector that serves as the programming interface for the PIC18F microcontroller

[Table 2-1](#) and [Table 2-2](#) show the pinouts of J2 and J3.

TABLE 2-1: J2 CONNECTOR PINOUT (PART NO.: PEC06SAAN)

Pin Number	Pin Name	Functional Description
1	GND	Ground
2	V _{IN}	+5V Supply
3	IO1	LX3302AQPW IO1 output can be programmed to PWM/SENT
4	IO2	LX3302AQPW IO2 output can be programmed to PWM/SENT
5	IO3	LX3302AQPW IO3 output can be programmed to DAC analog output
6	IO4	Only used for Digital Programming mode

TABLE 2-2: J3 CONNECTOR PINOUT (PART NO.: GRPB061VWVN-RC)

Pin Number	Pin Name	Functional Description
1	MCLR	Master Clear (used for programming internal microcontroller)
2	VDD	Internal device supply
3	VSS(GND)	Ground
4	ICSPDAT/PGD	Data Line for programming internal microcontroller (PIC18F25K50)
5	ICSPCLK/PGC	Clock for programming internal microcontroller (PIC18F25K50)
6	NC	Not Connected

The board shown in [Figure 2-2](#) also features a number of LEDs numbered D1 to D7, as follows:

- D1 – Board Power LED for PIC18F MCU and LX3302A. LED ON indicates board is powered up.
- D2 – LED ON indicates the Target position is at 0 to 90 degrees electrical angle (Quadrant 1)
- D3 – LED ON indicates the Target position is at 90 to 180 degrees electrical angle (Quadrant 2)
- D4 – LED ON indicates the Target position is at 180 to 270 degrees electrical angle (Quadrant 3)
- D5 – LED ON indicates the Target position is at 270 to 360 degrees electrical angle (Quadrant 4)
- D6 – LED ON indicates USB Serial Data TX from PIC18F MCU to IPCE
- D7 – LED ON indicates USB Serial Data RX to PIC18F MCU from IPCE

2.3 INDUCTIVE SENSOR BOARD TYPICAL CHARACTERISTICS

The plot in [Figure 2-3](#) shows an example of linearity achievable with the inductive sensor with an analog output. Other output formats will have the same accuracy.

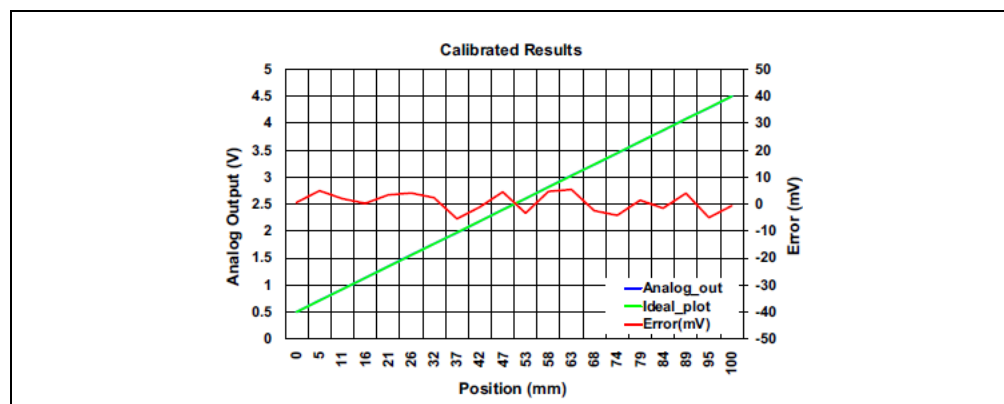


FIGURE 2-3: *An Example of Typical Inductive Sensor Board Linearity (Calibrated).*

2.4 RESTORING THE MCU TO THE FACTORY DEFAULT

In order to restore the PIC18F IC firmware to the factory default, load the hex file available at the path shown below using MPLAB® IPE and the PICKit™ 3/4 programmer.

The latest factory default firmware is available in the IPCE software folders. The default path is:

C:\IPCE_2.X\IPCE\driver\Nano_Sensor_Rotary_Board_Firmware\.

Worldwide Sales and Service

AMERICAS

Corporate Office
2355 West Chandler Blvd.
Chandler, AZ 85224-6199
Tel: 480-792-7200
Fax: 480-792-7277
Technical Support:
<http://www.microchip.com/support>
Web Address:
www.microchip.com

Atlanta
Duluth, GA
Tel: 678-957-9614
Fax: 678-957-1455

Austin, TX
Tel: 512-257-3370

Boston
Westborough, MA
Tel: 774-760-0087
Fax: 774-760-0088

Chicago
Itasca, IL
Tel: 630-285-0071
Fax: 630-285-0075

Dallas
Addison, TX
Tel: 972-818-7423
Fax: 972-818-2924

Detroit
Novi, MI
Tel: 248-848-4000

Houston, TX
Tel: 281-894-5983

Indianapolis
Noblesville, IN
Tel: 317-773-8323
Fax: 317-773-5453
Tel: 317-536-2380

Los Angeles
Mission Viejo, CA
Tel: 949-462-9523
Fax: 949-462-9608
Tel: 951-273-7800

Raleigh, NC
Tel: 919-844-7510

New York, NY
Tel: 631-435-6000

San Jose, CA
Tel: 408-735-9110
Tel: 408-436-4270

Canada - Toronto
Tel: 905-695-1980
Fax: 905-695-2078

ASIA/PACIFIC

Australia - Sydney
Tel: 61-2-9868-6733

China - Beijing
Tel: 86-10-8569-7000

China - Chengdu
Tel: 86-28-8665-5511

China - Chongqing
Tel: 86-23-8980-9588

China - Dongguan
Tel: 86-769-8702-9880

China - Guangzhou
Tel: 86-20-8755-8029

China - Hangzhou
Tel: 86-571-8792-8115

China - Hong Kong SAR
Tel: 852-2943-5100

China - Nanjing
Tel: 86-25-8473-2460

China - Qingdao
Tel: 86-532-8502-7355

China - Shanghai
Tel: 86-21-3326-8000

China - Shenyang
Tel: 86-24-2334-2829

China - Shenzhen
Tel: 86-755-8864-2200

China - Suzhou
Tel: 86-186-6233-1526

China - Wuhan
Tel: 86-27-5980-5300

China - Xian
Tel: 86-29-8833-7252

China - Xiamen
Tel: 86-592-2388138

China - Zhuhai
Tel: 86-756-3210040

ASIA/PACIFIC

India - Bangalore
Tel: 91-80-3090-4444

India - New Delhi
Tel: 91-11-4160-8631

India - Pune
Tel: 91-20-4121-0141

Japan - Osaka
Tel: 81-6-6152-7160

Japan - Tokyo
Tel: 81-3-6880-3770

Korea - Daegu
Tel: 82-53-744-4301

Korea - Seoul
Tel: 82-2-554-7200

Malaysia - Kuala Lumpur
Tel: 60-3-7651-7906

Malaysia - Penang
Tel: 60-4-227-8870

Philippines - Manila
Tel: 63-2-634-9065

Singapore
Tel: 65-6334-8870

Taiwan - Hsin Chu
Tel: 886-3-577-8366

Taiwan - Kaohsiung
Tel: 886-7-213-7830

Taiwan - Taipei
Tel: 886-2-2508-8600

Thailand - Bangkok
Tel: 66-2-694-1351

Vietnam - Ho Chi Minh
Tel: 84-28-5448-2100

EUROPE

Austria - Wels
Tel: 43-7242-2244-39
Fax: 43-7242-2244-393

Denmark - Copenhagen
Tel: 45-4485-5910
Fax: 45-4485-2829

Finland - Espoo
Tel: 358-9-4520-820

France - Paris
Tel: 33-1-69-53-63-20
Fax: 33-1-69-30-90-79

Germany - Garching
Tel: 49-8931-9700

Germany - Haan
Tel: 49-2129-3766400

Germany - Heilbronn
Tel: 49-7131-72400

Germany - Karlsruhe
Tel: 49-721-625370

Germany - Munich
Tel: 49-89-627-144-0
Fax: 49-89-627-144-44

Germany - Rosenheim
Tel: 49-8031-354-560

Israel - Ra'anana
Tel: 972-9-744-7705

Italy - Milan
Tel: 39-0331-742611
Fax: 39-0331-466781

Italy - Padova
Tel: 39-049-7625286

Netherlands - Drunen
Tel: 31-416-690399
Fax: 31-416-690340

Norway - Trondheim
Tel: 47-7288-4388

Poland - Warsaw
Tel: 48-22-3325737

Romania - Bucharest
Tel: 40-21-407-87-50

Spain - Madrid
Tel: 34-91-708-08-90
Fax: 34-91-708-08-91

Sweden - Gothenberg
Tel: 46-31-704-60-40

Sweden - Stockholm
Tel: 46-8-5090-4654

UK - Wokingham
Tel: 44-118-921-5800
Fax: 44-118-921-5820