

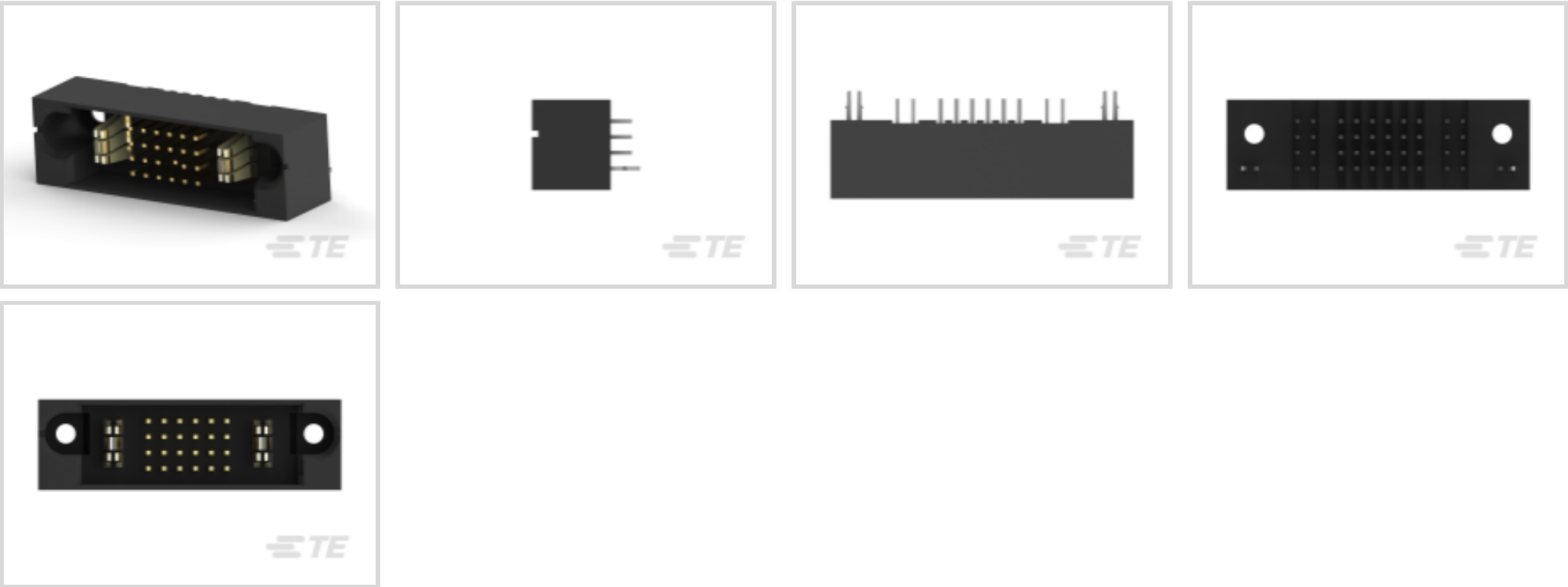


MULTI-BEAM

TE Internal #: 6600330-4  
PCB Mount Header, Vertical, Board-to-Board, 26 Position, 2.54 mm  
[.1 in] Centerline, Fully Shrouded, Gold, Through Hole - Solder,  
Power & Signal

[View on TE.com >](#)

Connectors > PCB Connectors > PCB Headers & Receptacles



PCB Connector Assembly Type: **PCB Mount Header**  
PCB Mount Orientation: **Vertical**  
Connector System: **Board-to-Board**  
Number of Positions: **26**  
Number of Rows: **4**

Features

Electrical Characteristics

Operating Voltage	60 VDC
-------------------	--------

Dimensions

Row-to-Row Spacing	2.54 mm[.1 in]
Connector Width	14.58 mm[.574 in]
PCB Thickness (Recommended)	2.11 – 2.62 mm[.083 – .103 in]
Connector Height	12.7 mm[.5 in]
Connector Length	48.9 mm[1.925 in]

Packaging Features

Packaging Quantity	36
Packaging Method	Tray

Industry Standards

Glow Wire Rating	High Temperature Part - Not Glow Wire
UL Flammability Rating	UL 94V-0



Usage Conditions

Operating Temperature (Max)	105 °C[221 °F]
Operating Temperature Range	-55 – 105 °C[-67 – 221 °F]

Mechanical Attachment

Mating Retention	Without
Mating Alignment Type	Polarization
PCB Mount Retention Type	Retention Clip/Post
PCB Mount Alignment Type	Retention Clip/Post
PCB Mount Retention	With
PCB Mount Alignment	With
Connector Mounting Type	Board Mount
Mating Alignment	With

Termination Features

Termination Post & Tail Length	3.43 mm[.135 in]
Square Termination Post & Tail Dimension	.64 mm[.025 in]
Termination Method to PCB	Through Hole - Solder

Contact Features

Contact Underplating Material	Nickel
Contact Underplating Material Thickness	1.27 µm[50 µin]
Contact Size	.64mm
Contact Mating Area Plating Material Thickness	.076 µm[3 µin]
Mating Square Post Dimension	.64 mm[.025 in]
PCB Contact Termination Area Plating Material Thickness	2.54 – 5.08 µm[100 – 200 µin]
Contact Shape & Form	Square
Contact Layout	Matrix
Contact Base Material	Copper Alloy
PCB Contact Termination Area Plating Material	Tin
Contact Mating Area Plating Material	Gold
Contact Type	Blade, Tab
Contact Current Rating (Max)	42 A

Housing Features

Housing Material	Thermoplastic
------------------	---------------



Centerline (Pitch)	2.54 mm[.1 in]
Configuration Features	
Number of Columns	8
Number of Loaded Positions	26
Mating & Unmating Configuration	Sequencing
Number of Signal Positions	24
Number of Power Positions	2
PCB Mount Orientation	Vertical
Number of Positions	26
Number of Rows	4
Product Type Features	
Mixed & Hybrid Header	Yes
Connector Shape	Rectangular
PCB Connector Assembly Type	PCB Mount Header
Connector System	Board-to-Board
Header Type	Fully Shrouded
Sealable	No
Connector & Contact Terminates To	Printed Circuit Board
Body Features	
Primary Product Color	Black
Operation/Application	
Circuit Application	Power & Signal
Other	
EU RoHS Compliance	Compliant
EU ELV Compliance	Compliant
Product Compliance	
For compliance documentation, visit the product page on TE.com>	
EU RoHS Directive 2011/65/EU	Compliant
EU ELV Directive 2000/53/EC	Compliant
China RoHS 2 Directive MIIT Order No 32, 2016	No Restricted Materials Above Threshold
EU REACH Regulation (EC) No. 1907/2006	Current ECHA Candidate List: JUNE 2024 (241)



Candidate List Declared Against: JUNE 2024 (241)  
Does not contain REACH SVHC

Halogen Content	Not Low Halogen - contains Br or Cl > 900 ppm.
Solder Process Capability	Wave solder capable to 265°C

Product Compliance Disclaimer

This information is provided based on reasonable inquiry of our suppliers and represents our current actual knowledge based on the information they provided. This information is subject to change. The part numbers that TE has identified as EU RoHS compliant have a maximum concentration of 0.1% by weight in homogenous materials for lead, hexavalent chromium, mercury, PBB, PBDE, DBP, BBP, DEHP, DIBP, and 0.01% for cadmium, or qualify for an exemption to these limits as defined in the Annexes of Directive 2011/65/EU (RoHS2). Finished electrical and electronic equipment products will be CE marked as required by Directive 2011/65/EU. Components may not be CE marked. Additionally, the part numbers that TE has identified as EU ELV compliant have a maximum concentration of 0.1% by weight in homogenous materials for lead, hexavalent chromium, and mercury, and 0.01% for cadmium, or qualify for an exemption to these limits as defined in the Annexes of Directive 2000/53/EC (ELV). Regarding the REACH Regulation, the information TE provides on SVHC in articles for this part number is based on the latest European Chemicals Agency (ECHA) 'Guidance on requirements for substances in articles' posted at this URL: <https://echa.europa.eu/guidance-documents/guidance-on-reach>

Compatible Parts

TE Part # 1-1600636-1  
MBXL RCPT PMT 1P+24S+1P

TE Part # 6450160-3  
MBXL R/A RCPT 1P+24S+1P

TE Part # 1-6450540-8  
MBXL VERT RCPT 1P+24S+1P

TE Part # 6450540-1  
MBXL VERT RCPT 1P+24S+1P

Customers Also Bought

TE Part #1-641964-1  
02P UMNL HDR ASSY POL BLK

TE Part #3-1393247-5  
W31-X2M1G-20=W23/W31

TE Part #1-350777-3  
02P UMNL V0 PLUG HSG ORANGE

TE Part #1-350777-9  
02P UMNL V0 PLUG HSG BLACK



TE Part #1-534998-8  
[36 MODIV VRT DR CE 100/125](#)



TE Part #L9000277-01  
[SMA Jack 50 Ohm .031 PCB Edge Mount](#)



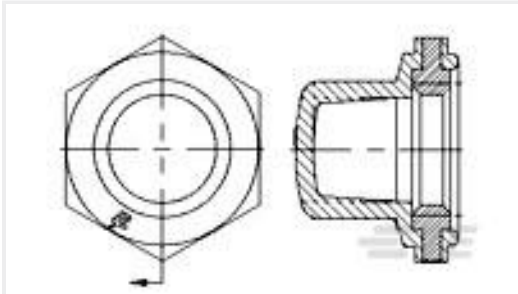
TE Part #6450540-1  
[MBXL VERT RCPT 1P+24S+1P](#)



TE Part #1-350777-2  
[02P UMNL V0 PLUG HSG RED](#)



TE Part #1-338088-6  
[8/8 INV.MOD.JACK](#)



TE Part #1825615-1  
[BP1048004=Boot, Pushbutton](#)

Documents

Product Drawings

[MBXL VERT HDR 1P+24S+1P](#)

English

CAD Files

Customer View Model

[ENG\\_CVM\\_CVM\\_6600330-4\\_J2.2d\\_dxf.zip](#)

English

[3D PDF](#)

3D

Customer View Model

[ENG\\_CVM\\_CVM\\_6600330-4\\_J2.3d\\_igs.zip](#)

English

Customer View Model

[ENG\\_CVM\\_CVM\\_6600330-4\\_J2.3d\\_stp.zip](#)

English

By downloading the CAD file I accept and agree to the [Terms and Conditions](#) of use.

Datasheets & Catalog Pages

[POWER\\_CONNECTORS\\_CATALOG\\_SEC01\\_BOARD\\_TO\\_BOARD](#)

English

[2\\_PIECE\\_POWER\\_CONNECTORS\\_qrg\\_4-1773458-1](#)

English

Product Specifications

[Application Specification](#)

English

6600330-4

PCB Mount Header, Vertical, Board-to-Board, 26 Position, 2.54 mm [.1 in] Centerline,  
Fully Shrouded, Gold, Through Hole - Solder, Power & Signal

