



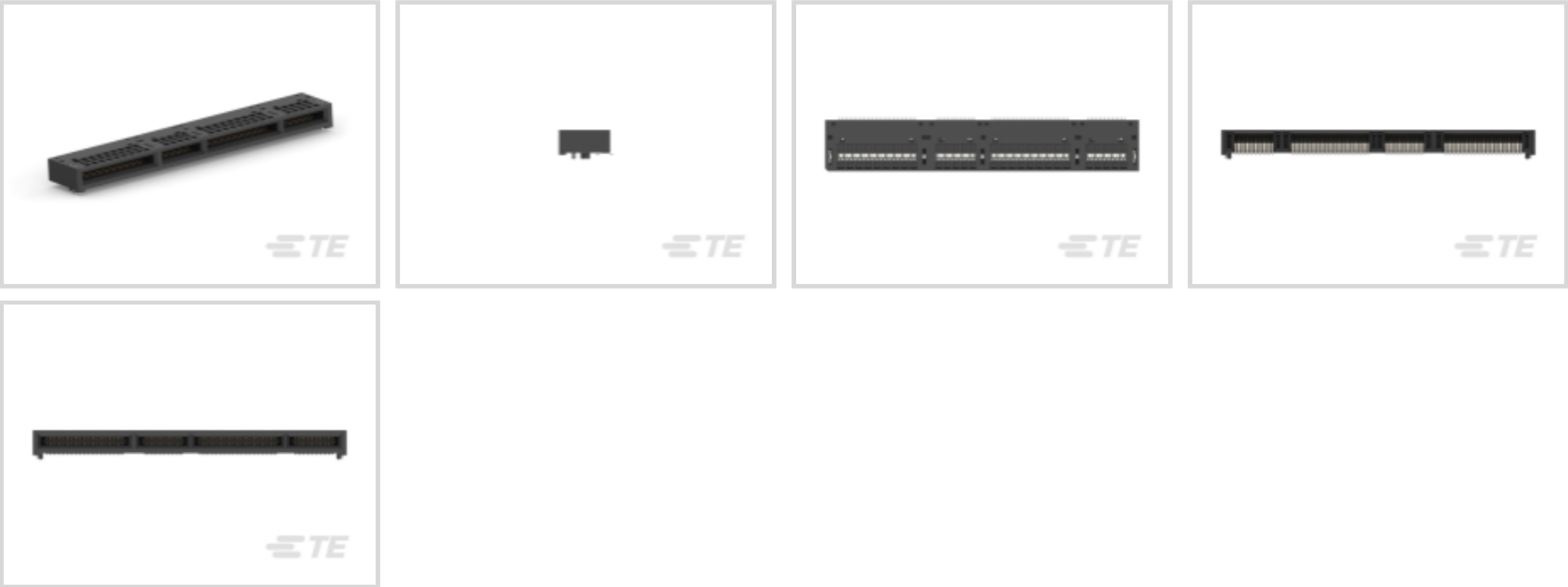
Sliver for SFF-TA-1002

TE Internal #: 2336568-4

Sliver for SFF-TA-1002, PCB Edge Card, Right Angle, 168 Position, Surface Mount, Sliver for SFF-TA-1002, Internal I/O Connectors

[View on TE.com >](#)

Connectors > PCB Connectors > Internal I/O Connectors



Internal I/O Connector Type: **Sliver for SFF-TA-1002**

Connector Mates With: **PCB Edge Card**

PCB Mount Orientation: **Right Angle**

Number of Positions: **168**

Industry Standard: **OCP NIC 3.0, Gen-Z**

Features

Mechanical Attachment

Connector Mounting Type	Board Mount
-------------------------	-------------

Usage Conditions

Operating Temperature Range	-55 – 85 °C[-67 – 185 °F]
-----------------------------	---------------------------

Contact Features

PCB Contact Termination Area Plating Material	Tin
Contact Underplating Material	Nickel
Contact Mating Area Plating Material	Gold
Contact Base Material	Copper Alloy
Contact Current Rating (Max)	1.1 A
Contact Mating Area Plating Material Thickness	.076 µm[3 µin]

Configuration Features

Number of Rows	2
PCB Mount Orientation	Right Angle
Number of Positions	168



Product Type Features

Connector & Contact Terminates To	Printed Circuit Board
Internal I/O Connector Type	Sliver for SFF-TA-1002
Connector Mates With	PCB Edge Card

Termination Features

Termination Method to PCB	Surface Mount
---------------------------	---------------

Housing Features

Centerline (Pitch)	.6 mm[.023 in]
--------------------	----------------

Operation/Application

Circuit Application	Signal
---------------------	--------

Industry Standards

Industry Standard	OCP NIC 3.0, Gen-Z
-------------------	--------------------

Other

EU RoHS Compliance	Compliant
EU ELV Compliance	Compliant

Product Compliance

For compliance documentation, visit the product page on TE.com>

EU RoHS Directive 2011/65/EU	Compliant
EU ELV Directive 2000/53/EC	Compliant
China RoHS 2 Directive MIIT Order No 32, 2016	No Restricted Materials Above Threshold
EU REACH Regulation (EC) No. 1907/2006	Current ECHA Candidate List: JUNE 2024 (241) Candidate List Declared Against: JUNE 2024 (241) Does not contain REACH SVHC
Halogen Content	Low Halogen - Br, Cl, F, I < 900 ppm per homogenous material. Also BFR/CFR/PVC Free
Solder Process Capability	Not reviewed for solder process capability

Product Compliance Disclaimer

This information is provided based on reasonable inquiry of our suppliers and represents our current actual knowledge based on the information they provided. This information is subject to change. The part numbers that TE has identified as EU RoHS compliant have a maximum concentration of 0.1% by weight in homogenous materials for lead, hexavalent chromium, mercury, PBB, PBDE, DBP, BBP, DEHP, DIBP, and 0.01% for cadmium, or qualify for an exemption to these limits as defined in the Annexes of Directive 2011/65/EU (RoHS2). Finished electrical and electronic equipment products



will be CE marked as required by Directive 2011/65/EU. Components may not be CE marked. Additionally, the part numbers that TE has identified as EU ELV compliant have a maximum concentration of 0.1% by weight in homogenous materials for lead, hexavalent chromium, and mercury, and 0.01% for cadmium, or qualify for an exemption to these limits as defined in the Annexes of Directive 2000/53/EC (ELV). Regarding the REACH Regulation, the information TE provides on SVHC in articles for this part number is based on the latest European Chemicals Agency (ECHA) 'Guidance on requirements for substances in articles' posted at this URL: <https://echa.europa.eu/guidance-documents/guidance-on-reach>

Compatible Parts

TE Part # 2328461-1
280 POS., CONNECTOR ASSEMBLY, SLIVER 2.0

TE Part # 2327677-1
RECEPT ASSY, 140 POS, VERT, SLIVER 2.0

TE Part # 2333799-1
RCPT ASSY, VERT, 168 POS, SLIVER 2.0

Also in the Series | Sliver for SFF-TA-1002

Connector Hardware(1)

Internal I/O Cable Assemblies(105)

Internal I/O Connectors(133)

Customers Also Bought

TE Part #2057630-1
CFP Receptacle Conn Assy

TE Part #2170704-3
CAGE ASSY, QSFP28 1X1, SPRING, HS

TE Part #2-2176307-8
RP 1E 0.1W 23K7 0.1% 25PPM 5K RL

TE Part #5-146131-9
20 MODII HDR DRST SFMNT B/A LF

TE Part #1761007-2
SFP 1X2 CAGE & LIGHT PIPE KIT

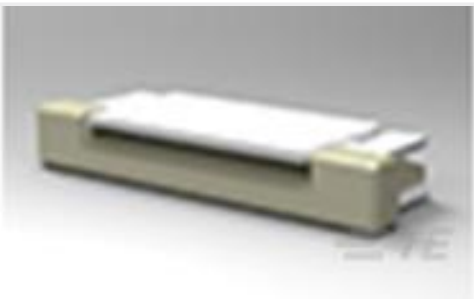
TE Part #3-644617-8
08P MTA156 HDR ASY PO RA FB LF

TE Part #2300837-1
Hardware Kit, CFP, 5mm Heatsink

TE Part #2300837-2
Hardware Kit, CFP, 5mm Heatsink



TE Part #2149151-1
EMI/Dust Cover, CFP



TE Part #1-1734839-6
FPC CONN. 0.5MM PITCH T/C, 16P

Documents

Product Drawings

RECEPT ASSY, RA, 168 POS, SLIVER 2.0

English

CAD Files

3D PDF

3D

Customer View Model

ENG_CVM_CVM_2336568-4_2.2d_dxf.zip

English

Customer View Model

ENG_CVM_CVM_2336568-4_2.3d_igs.zip

English

Customer View Model

ENG_CVM_CVM_2336568-4_2.3d_stp.zip

English

By downloading the CAD file I accept and agree to the [Terms and Conditions](#) of use.

Datasheets & Catalog Pages

Sliver Internal Cabled Interconnect Solutions Brochure (Chinese)

Product Specifications

Application Specification

English

Agency Approvals

UL Report

English