



FPC

TE Internal #: 2-84982-6

1 mm [.039 in] Centerline, Vertical, Surface Mount, Tin, 26 Position, FPC Connectors

[View on TE.com >](#)

Connectors > PCB Connectors > Wire-to-Board Connectors > FFC, FPC & Ribbon Connectors > FPC Connectors



Centerline (Pitch): 1 mm [.039 in]

Mating Retention Type: Non ZIF

PCB Mount Orientation: Vertical

Termination Method to PCB: Surface Mount

Contact Mating Area Plating Material: Tin

Features

Electrical Characteristics

Operating Voltage	125 VAC
-------------------	---------

Usage Conditions

Operating Temperature Range	-20 – 85 °C[-4 – 185 °F]
-----------------------------	--------------------------

Operation/Application

Circuit Application	Signal
---------------------	--------

Product Type Features

Connector & Contact Terminates To	Flexible Printed Circuit (FPC)
Connector Product Type	Connector Assembly
Connector System	Flex-to-Board
PCB Connector Assembly Type	PCB Mount Receptacle

Body Features

Primary Product Color	Natural
-----------------------	---------

Identification Marking

Circuit Identification Feature	Without
--------------------------------	---------



Packaging Features

Packaging Quantity	800
Packaging Method	Tape & Reel

Dimensions

Accepts Flex Cable Thickness	.3 mm[.012 in]
Connector Width	4.4 mm[.173 in]
Connector Height	5.6 mm[.22 in]
Connector Length	28 mm[1.102 in]

Contact Features

PCB Contact Termination Area Plating Material Finish	Matte
Contact Mating Area Plating Material Thickness	1 μm[39.37 μin]
Contact Current Rating (Max)	1 A
Contact Shape & Form	Single Beam
PCB Contact Termination Area Plating Material Thickness	1 μm[39.37 μin]
Contact Layout	Staggered Type A
Contact Base Material	Phosphor Bronze
PCB Contact Termination Area Plating Material	Tin
Contact Type	Socket
Contact Mating Area Plating Material Finish	Matte
Contact Mating Area Plating Material	Tin

Configuration Features

Compatible With Wire & Cable Type	FFC, FPC
Number of Rows	1
PCB Mount Orientation	Vertical
Number of Positions	26

Mechanical Attachment

Connector Mounting Type	Board Mount
PCB Mount Retention	Without
Mating Alignment	With
PCB Mount Alignment	Without
Mating Retention Type	Non ZIF

Housing Features

--	--



Housing Material	Nylon GF
Centerline (Pitch)	1 mm[.039 in]

Termination Features

Termination Method to PCB	Surface Mount
---------------------------	---------------

Other

EU RoHS Compliance	Compliant
EU ELV Compliance	Compliant

Product Compliance

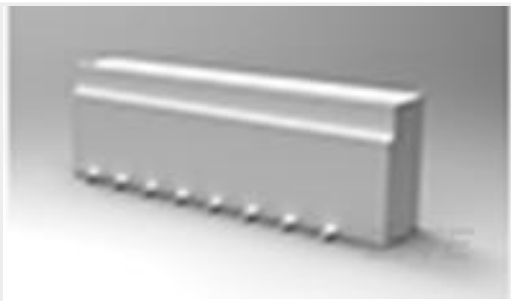
For compliance documentation, visit the product page on TE.com>

EU RoHS Directive 2011/65/EU	Compliant
EU ELV Directive 2000/53/EC	Compliant
China RoHS 2 Directive MIIT Order No 32, 2016	No Restricted Materials Above Threshold
EU REACH Regulation (EC) No. 1907/2006	Current ECHA Candidate List: JUNE 2024 (241) Candidate List Declared Against: JUNE 2024 (241) Does not contain REACH SVHC
Halogen Content	Not Low Halogen - contains Br or Cl > 900 ppm.
Solder Process Capability	Reflow solder capable to 245°C

Product Compliance Disclaimer

This information is provided based on reasonable inquiry of our suppliers and represents our current actual knowledge based on the information they provided. This information is subject to change. The part numbers that TE has identified as EU RoHS compliant have a maximum concentration of 0.1% by weight in homogenous materials for lead, hexavalent chromium, mercury, PBB, PBDE, DBP, BBP, DEHP, DIBP, and 0.01% for cadmium, or qualify for an exemption to these limits as defined in the Annexes of Directive 2011/65/EU (RoHS2). Finished electrical and electronic equipment products will be CE marked as required by Directive 2011/65/EU. Components may not be CE marked. Additionally, the part numbers that TE has identified as EU ELV compliant have a maximum concentration of 0.1% by weight in homogenous materials for lead, hexavalent chromium, and mercury, and 0.01% for cadmium, or qualify for an exemption to these limits as defined in the Annexes of Directive 2000/53/EC (ELV). Regarding the REACH Regulation, the information TE provides on SVHC in articles for this part number is based on the latest European Chemicals Agency (ECHA) 'Guidance on requirements for substances in articles' posted at this URL: <https://echa.europa.eu/guidance-documents/guidance-on-reach>

Compatible Parts



TE Part # 2-1735042-6
1MM FFC SMT V ASSY 26P EMBOSS



TE Part # 2-1734248-6
1.0 FPC, ZIF V/T, SMT, 26P

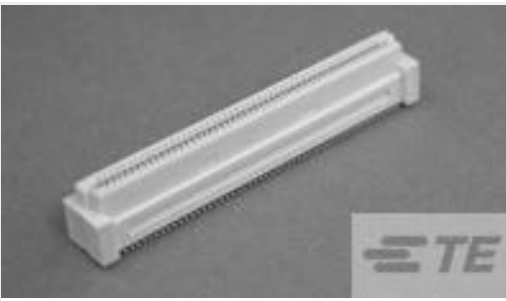


TE Part # 2-84953-6
1MM FPC HORZ.TOP CONT.ASSY 26P

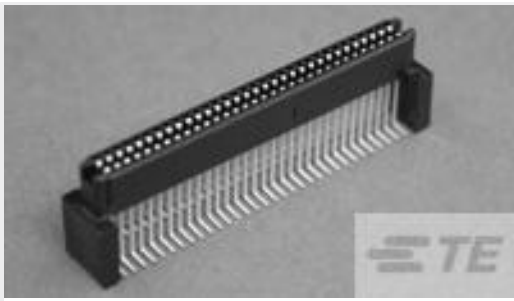
Customers Also Bought



TE Part #5749111-6
68 50SR CABLE PLUG ASSY



TE Part #5-5179009-1
0.8FH,R09H.5,040,08/Sn,TU



TE Part #5120531-1
1FHR,64,30A/S,N,C,S14,15



TE Part #5749070-7
68 50SR VERT RCPT ASSY



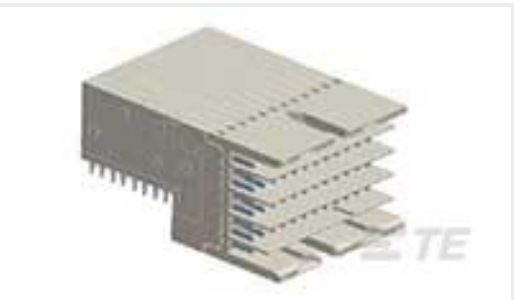
TE Part #2430142-1
Conn G SNG 1.6mm D-Sub 9 Pin



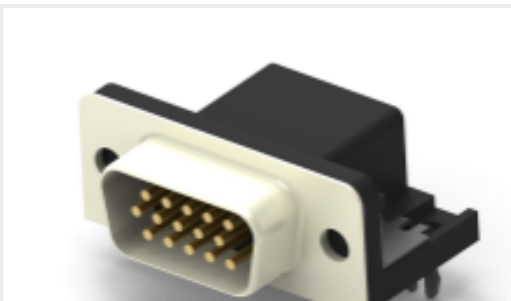
TE Part #5745171-5
AMPL CBL CLMP KIT SZ 1



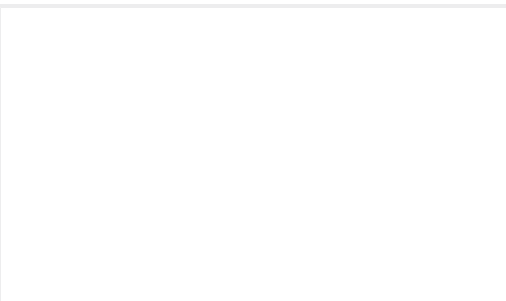
TE Part #100616-2
8/8 MOD.JACK ASSY TE SHIELDED



TE Part #2042139-2
RA Male Connector, IEC L3



TE Part #2311774-1
AMPL PLUG, HD22, R/A, 15P, THREADED



TE Part #BAG0051-00
MBDSM-U1SHR0-08-30-1-C-H

Documents

Product Drawings

1MM FFC SMT V ASSY 26P EMBOSS

English

CAD Files

Customer View Model

ENG_CVM_CVM_2-84982-6_J.2d_dxf.zip

English

3D PDF



3D

Customer View Model

[ENG_CVM_CVM_2-84982-6_J.3d_igs.zip](#)

English

Customer View Model

[ENG_CVM_CVM_2-84982-6_J.3d_stp.zip](#)

English

By downloading the CAD file I accept and agree to the [Terms and Conditions](#) of use.

Datasheets & Catalog Pages

[FPC Connector Family](#)

English

[1-1773959-7-FPC-Connectors-CN](#)

English

Product Specifications

[Product Specification](#)

English

Agency Approvals

[CSA Certificate](#)

English