



Connectors > Power Connectors > Circular Power > Circular Power Connectors



Number of Positions: 4

Connector Product Type: **Housing**

Operating Voltage: **600 VDC**

Connector System: **Wire-to-Wire**

Sealable: **Yes**

Features

Packaging Features

| | |
|--------------------|----------|
| Packaging Quantity | 1 |
| Packaging Method | Standard |

Mechanical Attachment

| | |
|-------------------------|----------------------------|
| Mating Retention Type | Threaded Coupling |
| Thread Size | 5/8-24 UNEF-2A |
| Polarization Code | A |
| Mating Alignment Type | Keyed |
| Mating Alignment | With |
| Connector Mounting Type | Cable Mount (Free-Hanging) |
| Mating Retention | With |
| Panel Mount Feature | Without |

Housing Features

| | |
|------------------|----------|
| Body Orientation | Straight |
| Housing Color | Black |



| | |
|-------------------------------|---------------|
| Housing Material | Thermoplastic |
| Circular Connector Shell Size | 11 |

Product Type Features

| | |
|-----------------------------------|--------------|
| Connector Seal & Plug Type | Peripheral |
| Connector Product Type | Housing |
| Connector System | Wire-to-Wire |
| Sealable | Yes |
| Connector & Contact Terminates To | Wire & Cable |
| Connector & Housing Type | Receptacle |
| Circular Connector Shell Type | All Plastic |

Configuration Features

| | |
|----------------------------|---------|
| Reverse Numbering | Without |
| Number of Positions | 4 |
| Number of Power Positions | 0 |
| Number of Signal Positions | 4 |

Electrical Characteristics

| | |
|-------------------|---------|
| Operating Voltage | 600 VAC |
|-------------------|---------|

Contact Features

| | |
|--------------------|--------|
| Reverse Gender | Yes |
| Contact Type | Socket |
| Contact Protection | With |

Usage Conditions

| | |
|-----------------------------|----------------------------|
| Operating Temperature Range | -55 – 105 °C[-67 – 221 °F] |
| Fluid Resistance | Immersion |

Operation/Application

| | |
|---------------------|----------------|
| Circuit Application | Power & Signal |
| Shielded | No |

Industry Standards

| | |
|------------------------|----------|
| UL Flammability Rating | UL 94V-0 |
|------------------------|----------|

Other

| | |
|--------------------|-----------|
| EU RoHS Compliance | Compliant |
| EU ELV Compliance | Compliant |



Product Compliance

For compliance documentation, visit the product page on TE.com>

| | |
|---|---|
| EU RoHS Directive 2011/65/EU | Compliant |
| EU ELV Directive 2000/53/EC | Compliant |
| China RoHS 2 Directive MIIT Order No 32, 2016 | No Restricted Materials Above Threshold |
| EU REACH Regulation (EC) No. 1907/2006 | Current ECHA Candidate List: JUNE 2024 (241) Candidate List Declared Against: JUNE 2024 (241) Does not contain REACH SVHC |
| Halogen Content | BFR/CFR/PVC Free, but Br/Cl >900 ppm in other sources. |
| Solder Process Capability | Not applicable for solder process capability |

Product Compliance Disclaimer

This information is provided based on reasonable inquiry of our suppliers and represents our current actual knowledge based on the information they provided. This information is subject to change. The part numbers that TE has identified as EU RoHS compliant have a maximum concentration of 0.1% by weight in homogenous materials for lead, hexavalent chromium, mercury, PBB, PBDE, DBP, BBP, DEHP, DIBP, and 0.01% for cadmium, or qualify for an exemption to these limits as defined in the Annexes of Directive 2011/65/EU (RoHS2). Finished electrical and electronic equipment products will be CE marked as required by Directive 2011/65/EU. Components may not be CE marked. Additionally, the part numbers that TE has identified as EU ELV compliant have a maximum concentration of 0.1% by weight in homogenous materials for lead, hexavalent chromium, and mercury, and 0.01% for cadmium, or qualify for an exemption to these limits as defined in the Annexes of Directive 2000/53/EC (ELV). Regarding the REACH Regulation, the information TE provides on SVHC in articles for this part number is based on the latest European Chemicals Agency (ECHA) 'Guidance on requirements for substances in articles' posted at this URL: <https://echa.europa.eu/guidance-documents/guidance-on-reach>

Compatible Parts



Also in the Series | AMP CPC



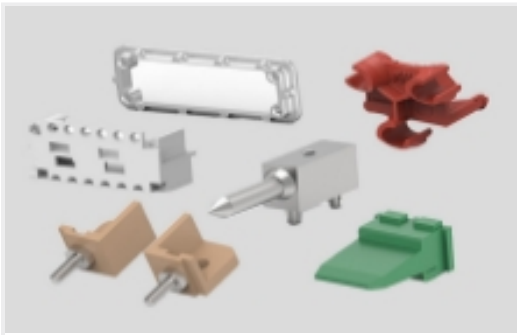
Circular Connector Backshells & Clamps(1)



Circular Power Connectors(423)



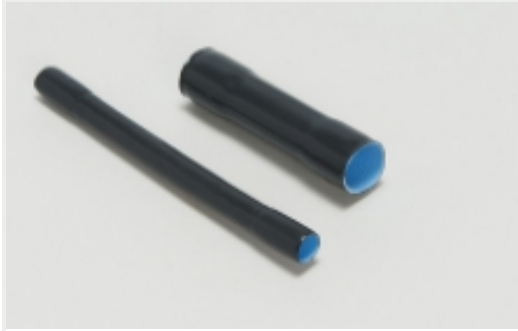
Connector Contacts(6)



Connector Hardware(12)

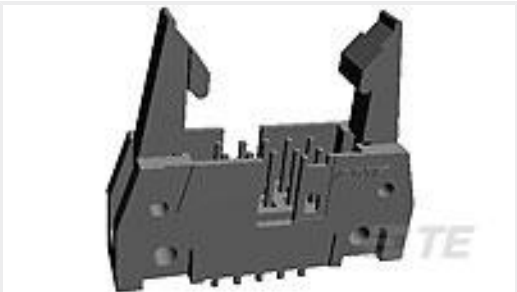


Power Contacts(6)



Sealing Sleeves(2)

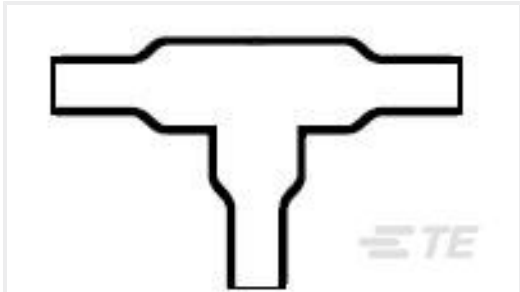
Customers Also Bought



TE Part #2-5499206-8
A/L UNIV HDR 34P VERT LG LAT B



TE Part #54011-1
CPC STRAIN RELIEF,SIZE 17



TE Part #823277-000
301A011-4/42-0



TE Part #6-2213766-7
AV19 DPL 3A POWER LED RED 24V



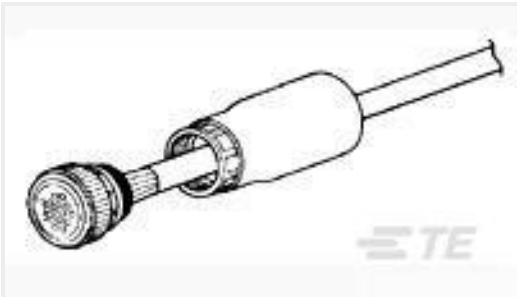
TE Part #1617151-3
JMGSP-5P = M39016/41-041P



TE Part #5052844025
RNF-100-3/64-0-SP



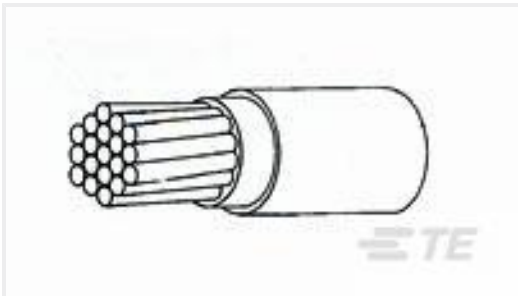
TE Part #NB14932001
DWP-125-3/8-0-STK



TE Part #54012-1
CPC STRAIN RELIEF,SIZE 23



TE Part #F766883001
RAY-90-4.0(100)



TE Part #CD60993001
44A0111-16-0CK0300

Documents



Product Drawings

CPC RECPT ASSEMBLY SIZE 11-4

English

CAD Files

3D PDF

3D

Customer View Model

ENG_CVM_CVM_206430-4_AC.2d_dxf.zip

English

Customer View Model

ENG_CVM_CVM_206430-4_AC.3d_igs.zip

English

Customer View Model

ENG_CVM_CVM_206430-4_AC.3d_stp.zip

English

By downloading the CAD file I accept and agree to the [Terms and Conditions](#) of use.

Datasheets & Catalog Pages

AMP Circular Connectors for Commercial Signal & Power Applications

English

Product Specifications

Application Specification

English

Agency Approvals

UL Report

English