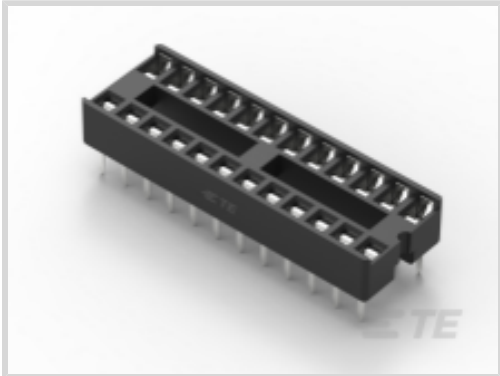




Connectors > Socket Connectors > IC Sockets > DIP Sockets



Contact Fabrication: **Stamped & Formed**

Number of Positions: **24**

Connector Profile: **Low**

Row-to-Row Spacing: **7.62 mm [.3 in]**

Leg Style: **Through Hole**

Features

Industry Standards

UL Flammability Rating	UL 94V-0
------------------------	----------

Termination Features

Termination Method to PCB	Through Hole - Solder
	3 in

Electrical Characteristics

Contact Resistance	20 mΩ
Insulation Resistance	1000 MΩ

Housing Features

Housing Color	Black
Housing Material	PBT GF30
Centerline (Pitch)	2.54 mm[.1 in]

Mechanical Attachment

Connector Mounting Type	Board Mount
Mating Alignment Type	Polarization
Mating Alignment	With

Packaging Features

Tubes per Box	2
---------------	---



Packaging Method	Tube, Box & Tube
Packaging Quantity	20

Operation/Application

Circuit Application	Signal
---------------------	--------

Other

Quantity per Tube	2000
EU RoHS Compliance	Compliant
EU ELV Compliance	Compliant

Product Type Features

Connector & Contact Terminates To	Printed Circuit Board
Leg Style	Through Hole

Dimensions

Product Length	30.48 mm[1.2 in]
Profile Height from PCB	5.1 mm[.2 in]
Row-to-Row Spacing	7.62 mm[.3 in]

Body Features

Sleeve Plating Material	Tin/Lead
Frame Style	Closed, Ladder
Sleeve Material	Brass/Copper
Connector Profile	Low

Configuration Features

PCB Mount Orientation	Vertical
Number of Rows	2
Number of Positions	24

Contact Features

Mating Contact Type	Dual Leaf
Contact Base Material	Phosphor Bronze
IC Socket Type	DIP
PCB Contact Termination Area Plating Material	Tin
Contact Type	Pin
Contact Fabrication	Stamped & Formed
Contact Mating Area Plating Material	Tin



	60 µin
Contact Current Rating (Max)	1 A

Usage Conditions

Operating Temperature Range	-40 – 105 °C[-40 – 221 °F]
-----------------------------	----------------------------

Product Compliance

For compliance documentation, visit the product page on TE.com>

EU RoHS Directive 2011/65/EU	Compliant
EU ELV Directive 2000/53/EC	Compliant
China RoHS 2 Directive MIIT Order No 32, 2016	No Restricted Materials Above Threshold
EU REACH Regulation (EC) No. 1907/2006	Current ECHA Candidate List: JUNE 2024 (241) Candidate List Declared Against: JUNE 2024 (241) Does not contain REACH SVHC
Halogen Content	Not Low Halogen - contains Br or Cl > 900 ppm.
Solder Process Capability	Wave solder capable to 240°C

Product Compliance Disclaimer

This information is provided based on reasonable inquiry of our suppliers and represents our current actual knowledge based on the information they provided. This information is subject to change. The part numbers that TE has identified as EU RoHS compliant have a maximum concentration of 0.1% by weight in homogenous materials for lead, hexavalent chromium, mercury, PBB, PBDE, DBP, BBP, DEHP, DIBP, and 0.01% for cadmium, or qualify for an exemption to these limits as defined in the Annexes of Directive 2011/65/EU (RoHS2). Finished electrical and electronic equipment products will be CE marked as required by Directive 2011/65/EU. Components may not be CE marked. Additionally, the part numbers that TE has identified as EU ELV compliant have a maximum concentration of 0.1% by weight in homogenous materials for lead, hexavalent chromium, and mercury, and 0.01% for cadmium, or qualify for an exemption to these limits as defined in the Annexes of Directive 2000/53/EC (ELV). Regarding the REACH Regulation, the information TE provides on SVHC in articles for this part number is based on the latest European Chemicals Agency (ECHA) ‘Guidance on requirements for substances in articles’ posted at this URL: <https://echa.europa.eu/guidance-documents/guidance-on-reach>

Customers Also Bought



TE Part #CAT-D625-L52
DIP Socket: Low Profile, Stamped & Formed, Open, Tin



TE Part #1-1879216-8
CPF 0402 76K8 0.1% 25PPM 1K RL



TE Part #2176398-2
3502 15K 1%



TE Part #1623769-1
23E 2K2A 6X50PL B9 M10



TE Part #5-1676913-2
YR1 0.1% 255K

TE Part #1734261-8
1.25 WTB, HDR, SMT, RA, 8P

TE Part #86530-000
FLS803-51 LIQUID LEVEL SENSOR

TE Part #800497-SF
FN9260-2-06

TE Part #7-1437514-1
8134-HC-8P3=TIN/LEAD PER 3.3.2

Documents

Product Drawings
24P,DIP SKT,300 CL,LDR,PB FREE
English

CAD Files
3D PDF
3D
Customer View Model
ENG_CVM_CVM_1-2199298-8_A.2d_dxf.zip
English
Customer View Model
ENG_CVM_CVM_1-2199298-8_A.3d_igs.zip
English
Customer View Model
ENG_CVM_CVM_1-2199298-8_A.3d_stp.zip
English

By downloading the CAD file I accept and agree to the [Terms and Conditions](#) of use.

Datasheets & Catalog Pages
DIP Sockets Quick Reference Guide (EN)
English